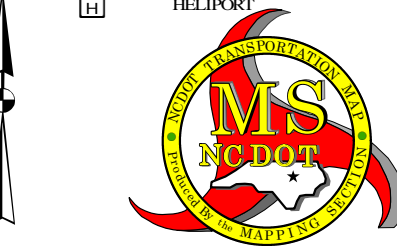
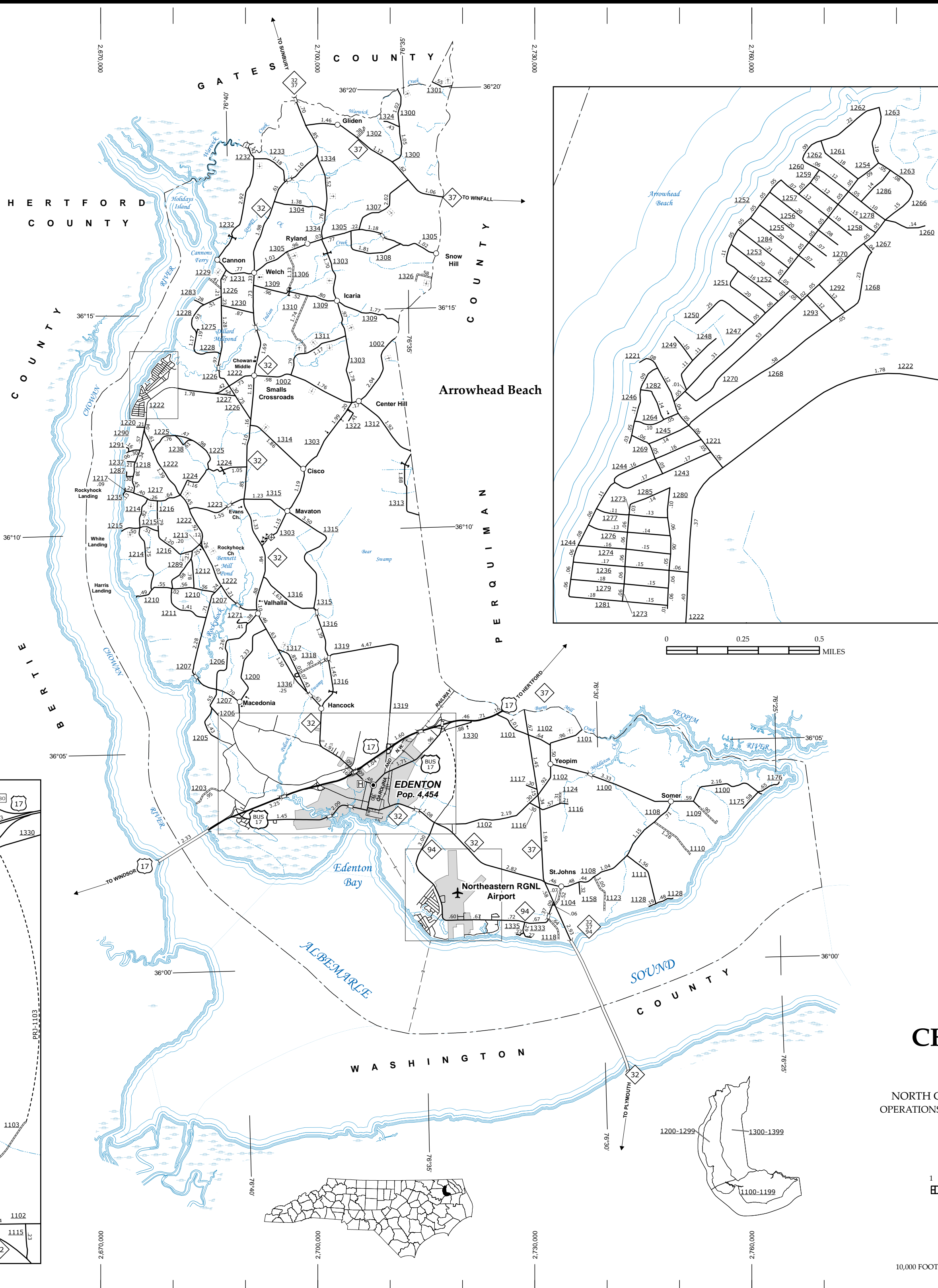
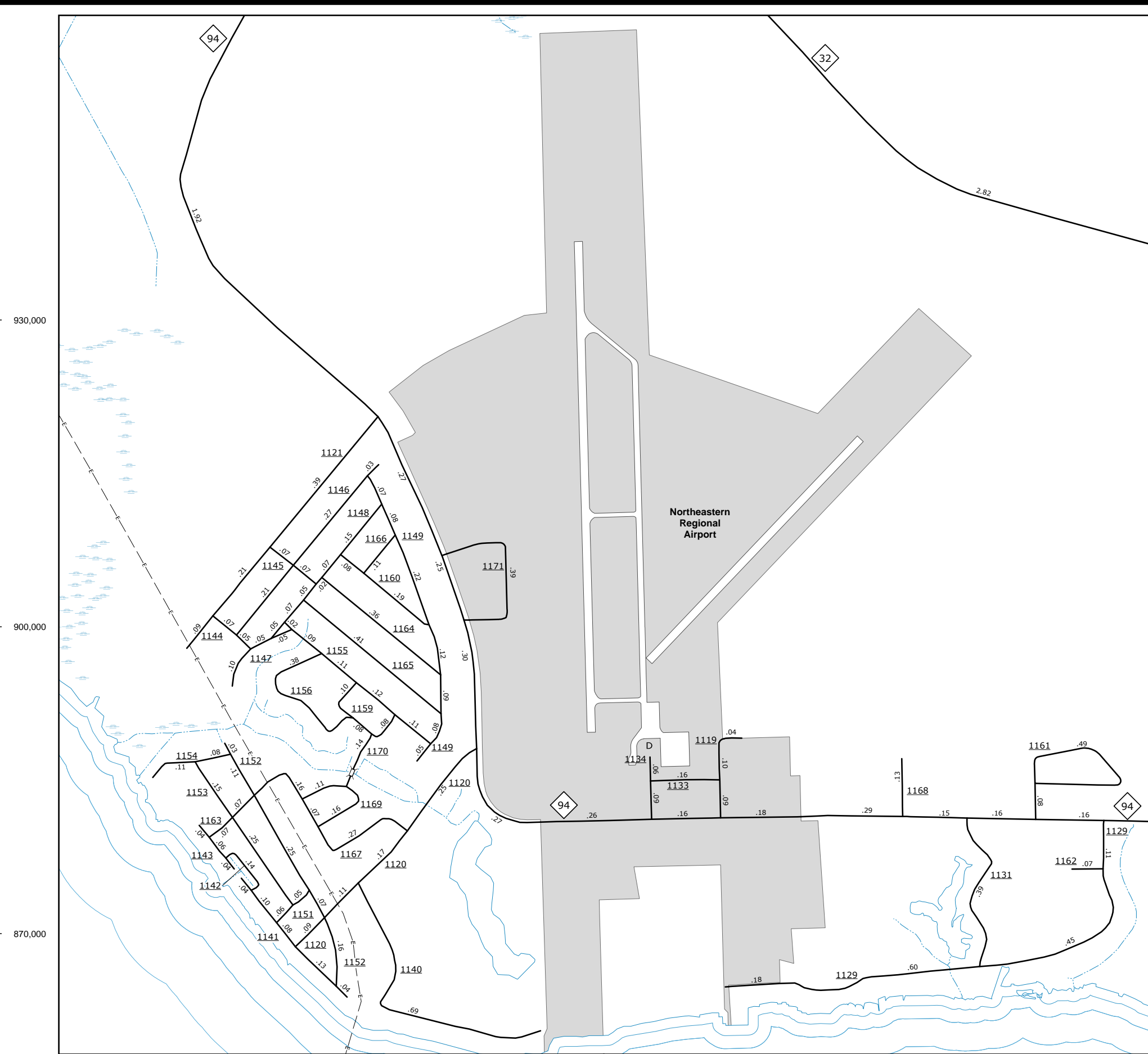
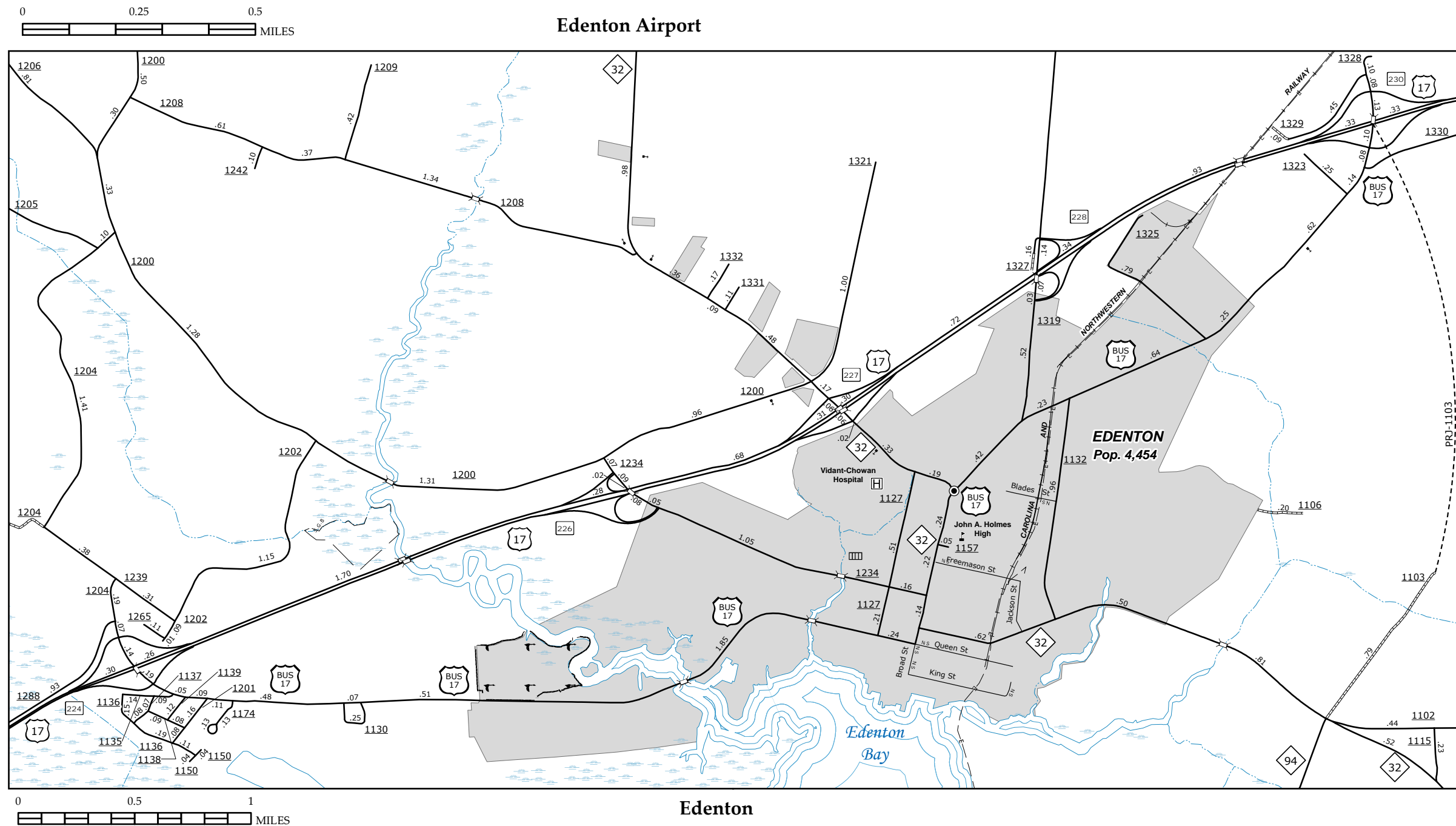


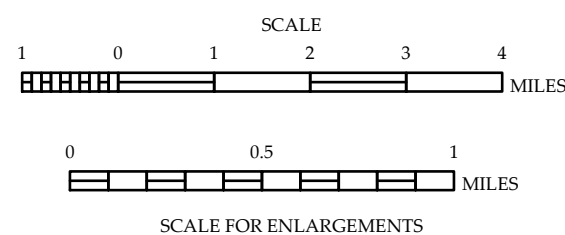
The Mapping Section's goal is to provide the most accurate and current information possible. Map data is compiled from numerous sources with varying dates of publication and map accuracy standards. As a result, the accuracy of the information shown on this map may vary. The information shown on this map was last updated in March 2022. For additional information, visit <http://www.ncdot.gov/travel/infrastructure/mapping> and click on Data Providers or contact us by phone at (919) 855-9480.

COPIES OF THIS MAP ARE AVAILABLE
FOR PURCHASE AT A NOMINAL COST.
N.C. DEPARTMENT OF TRANSPORTATION
MS&U MAPPING SECTION
4809 BERT RD
RALEIGH, NC 27609



CHOWAN COUNTY NORTH CAROLINA

PREPARED BY THE
NORTH CAROLINA DEPARTMENT OF TRANSPORTATION
OPERATIONS PROGRAM MANAGEMENT UNIT - MAPPING SECTION
IN COOPERATION WITH THE
U.S. DEPARTMENT OF TRANSPORTATION
FEDERAL HIGHWAY ADMINISTRATION



10,000 FOOT GRID BASED ON NORTH CAROLINA PLANE COORDINATE SYSTEM
LAMBERT CONFORMAL CONIC PROJECTION