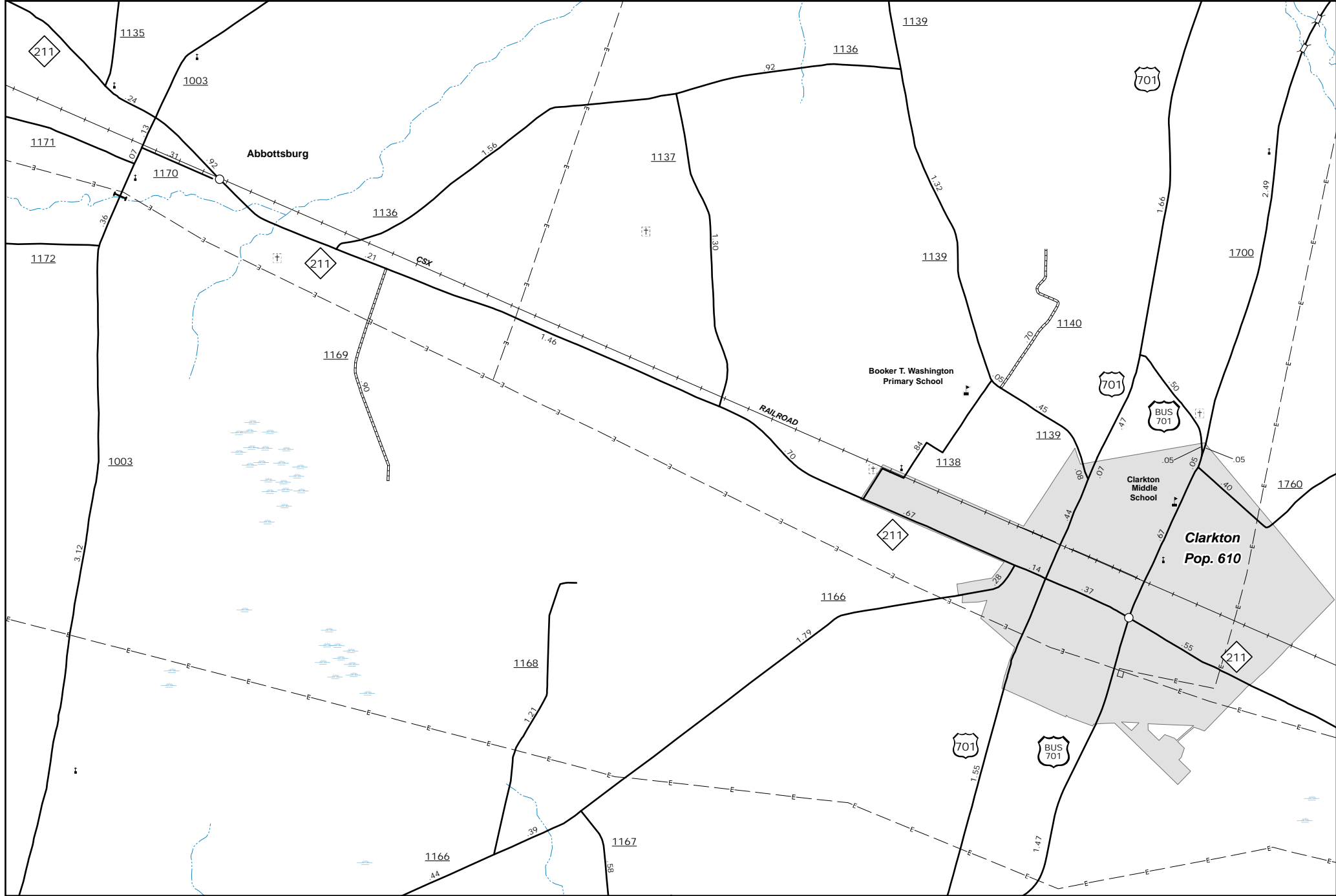
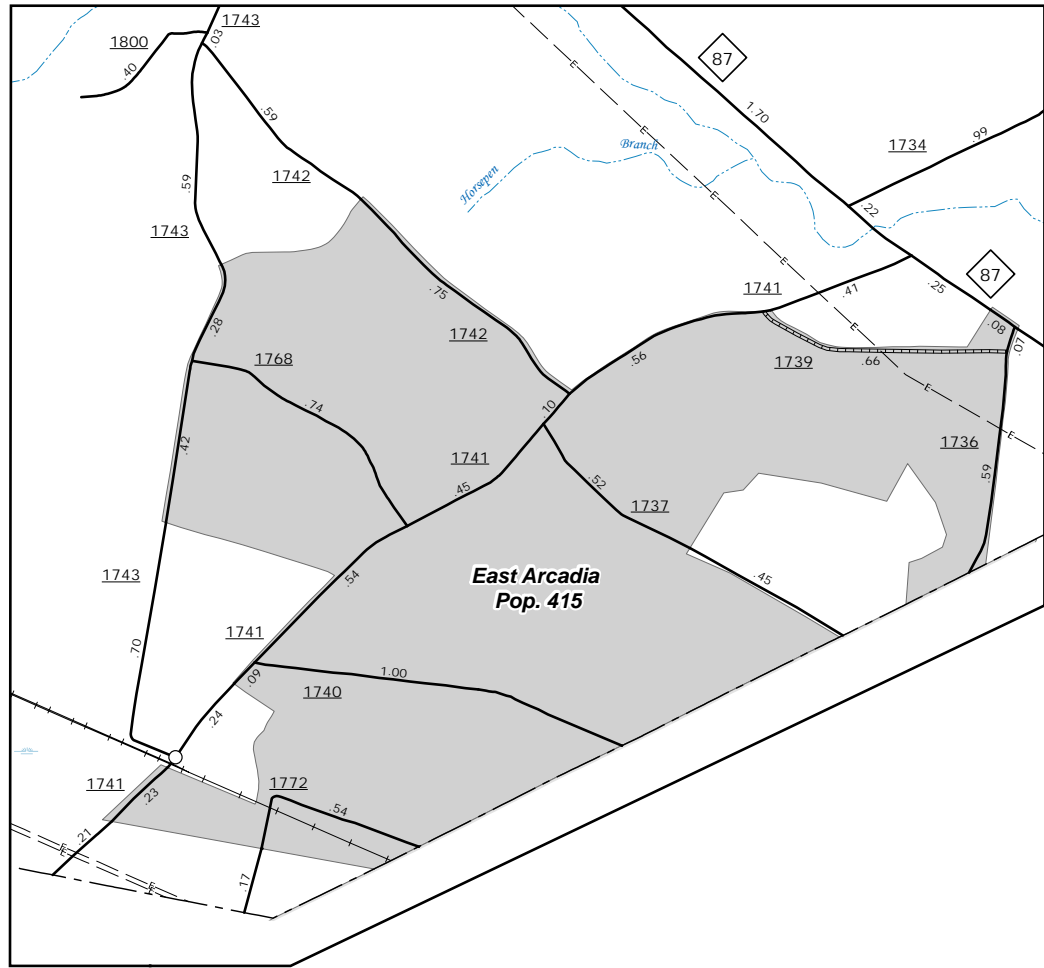


The Mapping Section's goal is to provide the most accurate and current information possible. Map data is compiled from numerous sources with varying dates of publication. It may not reflect the most current information. As such, the accuracy of the information is not guaranteed. For more information, visit the Mapping Section's website at <http://www.ncdot.gov/transportation/mapping>. For additional information, visit <http://www.ncdot.gov/transportation/mapping>, and click on Data Providers or contact us by phone at (819) 835-8480.

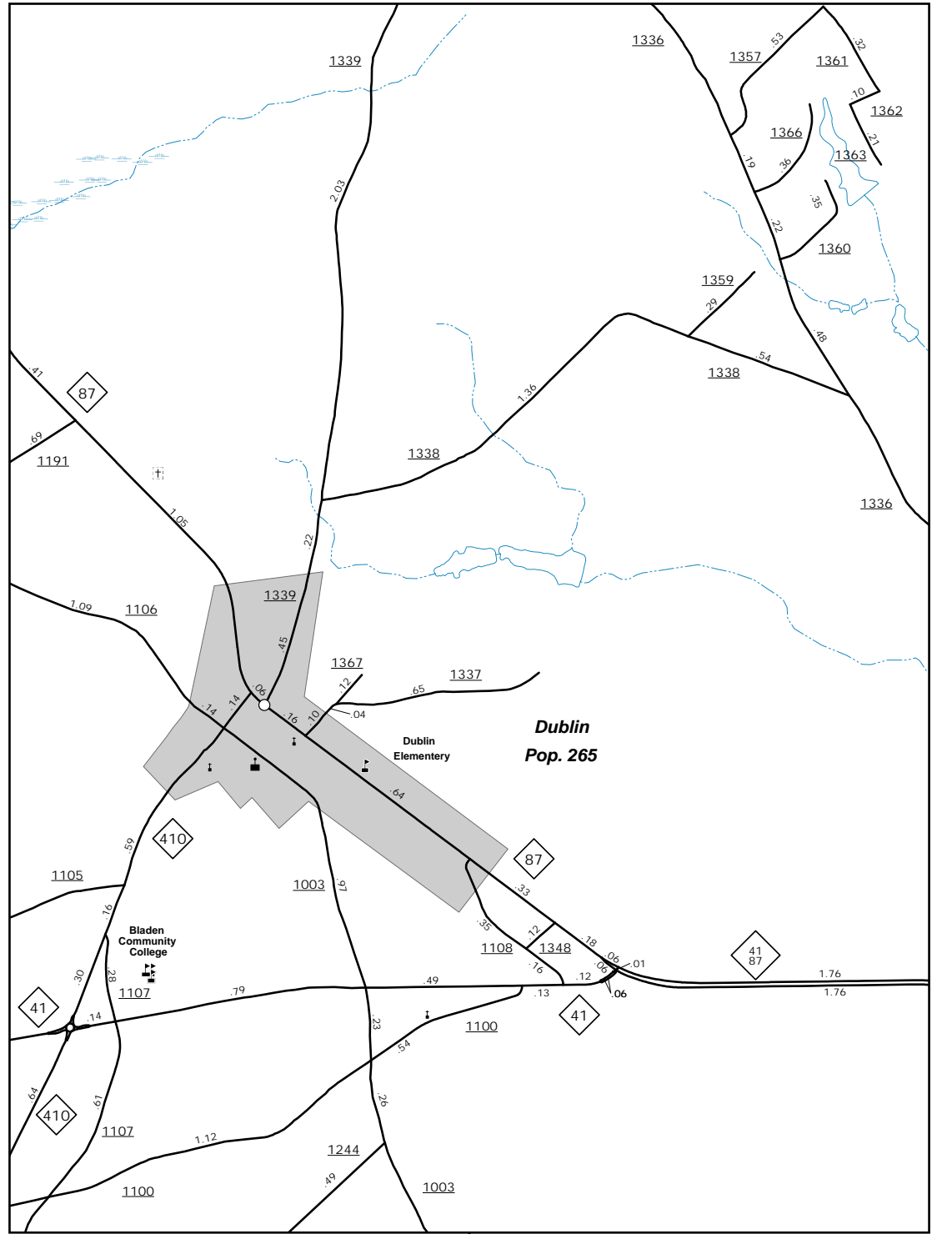
COPIES OF THIS MAP ARE AVAILABLE
FOR PURCHASE AT A
REPUBLICAN NOMINAL COST.
ADDRESS: N.C. DEPARTMENT OF TRANSPORTATION
MSAU - MAPPING SECTION
4809 BERNARD
COLUMBIANA, NC 27838



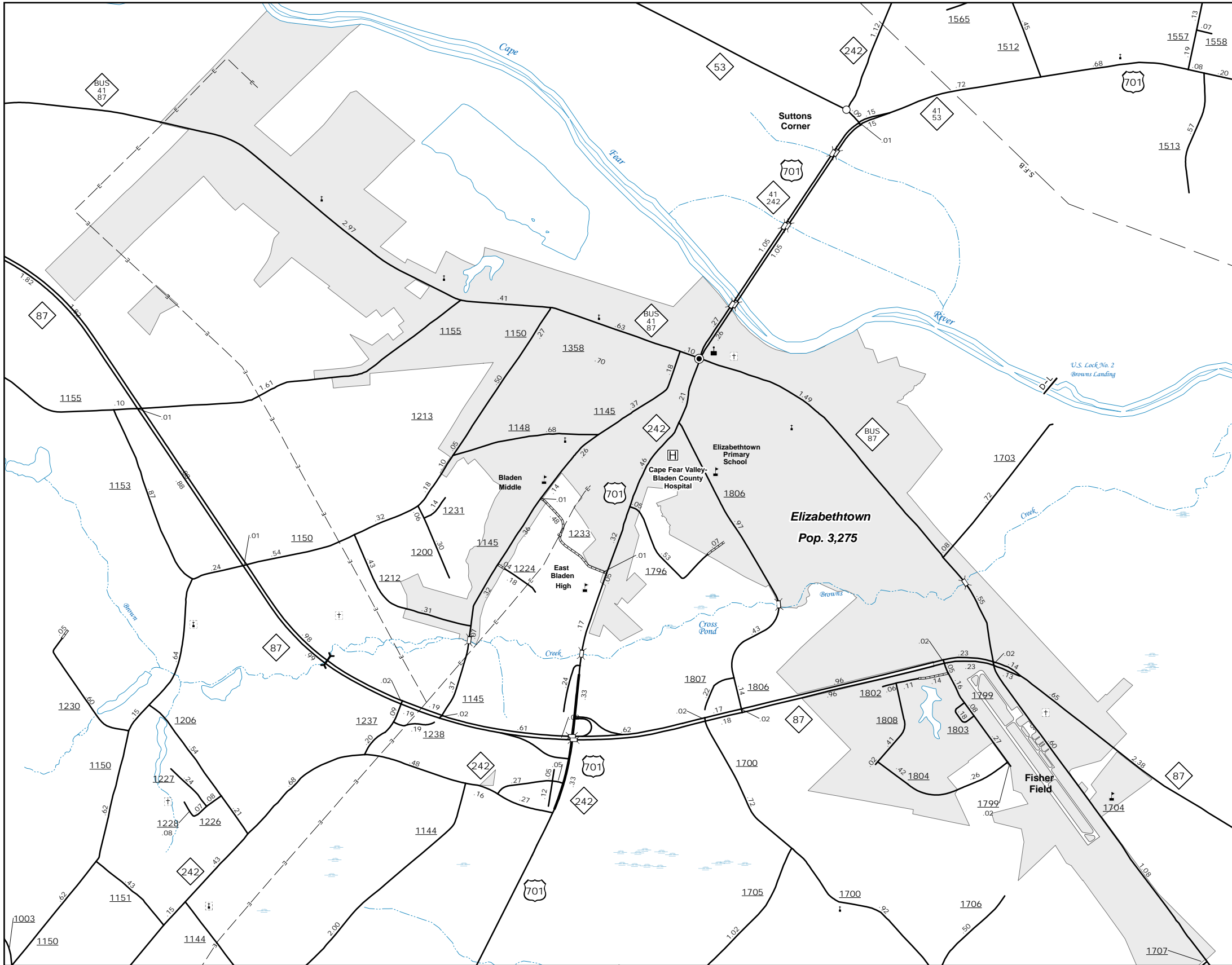
Clarkton



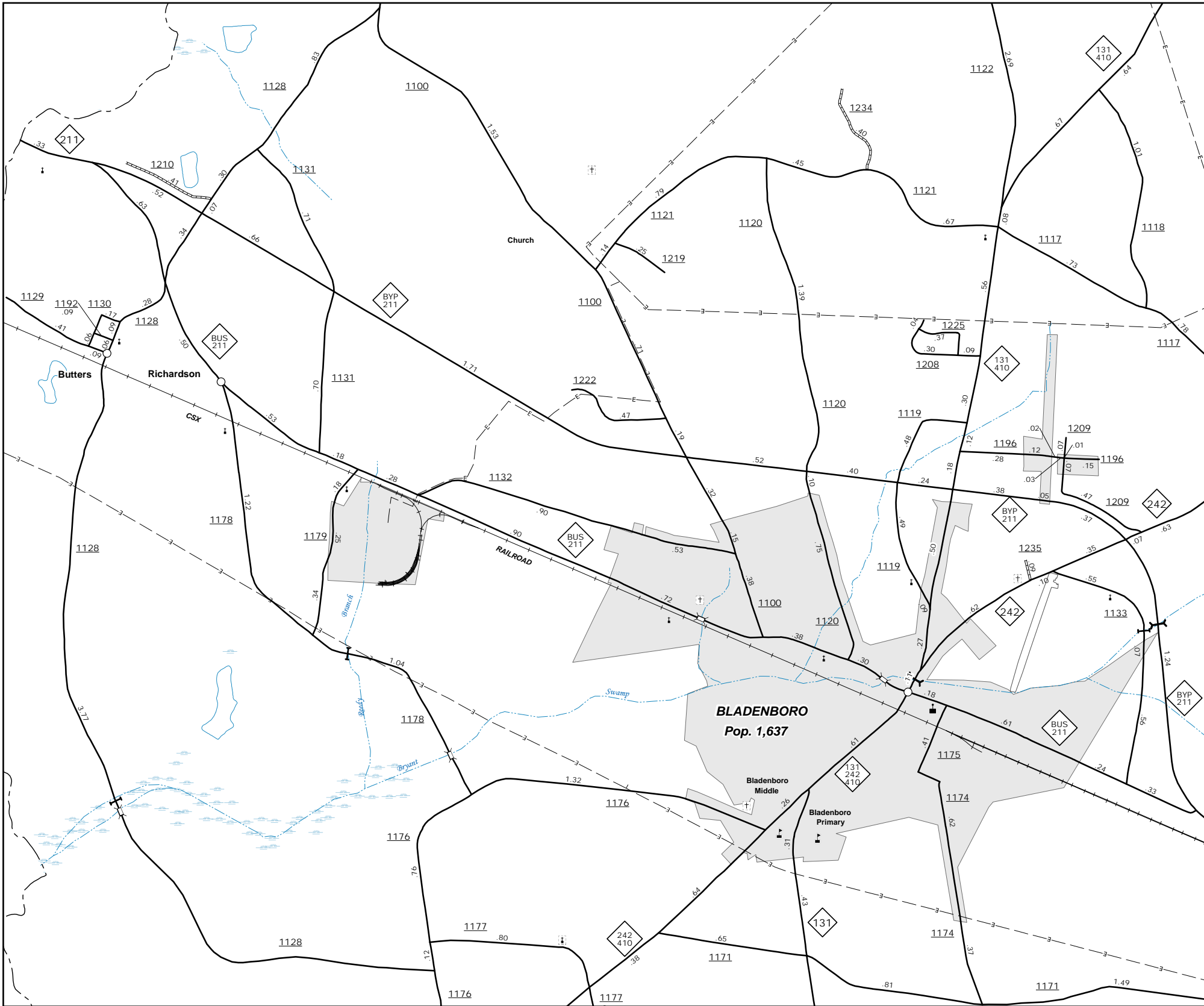
East Arcadia



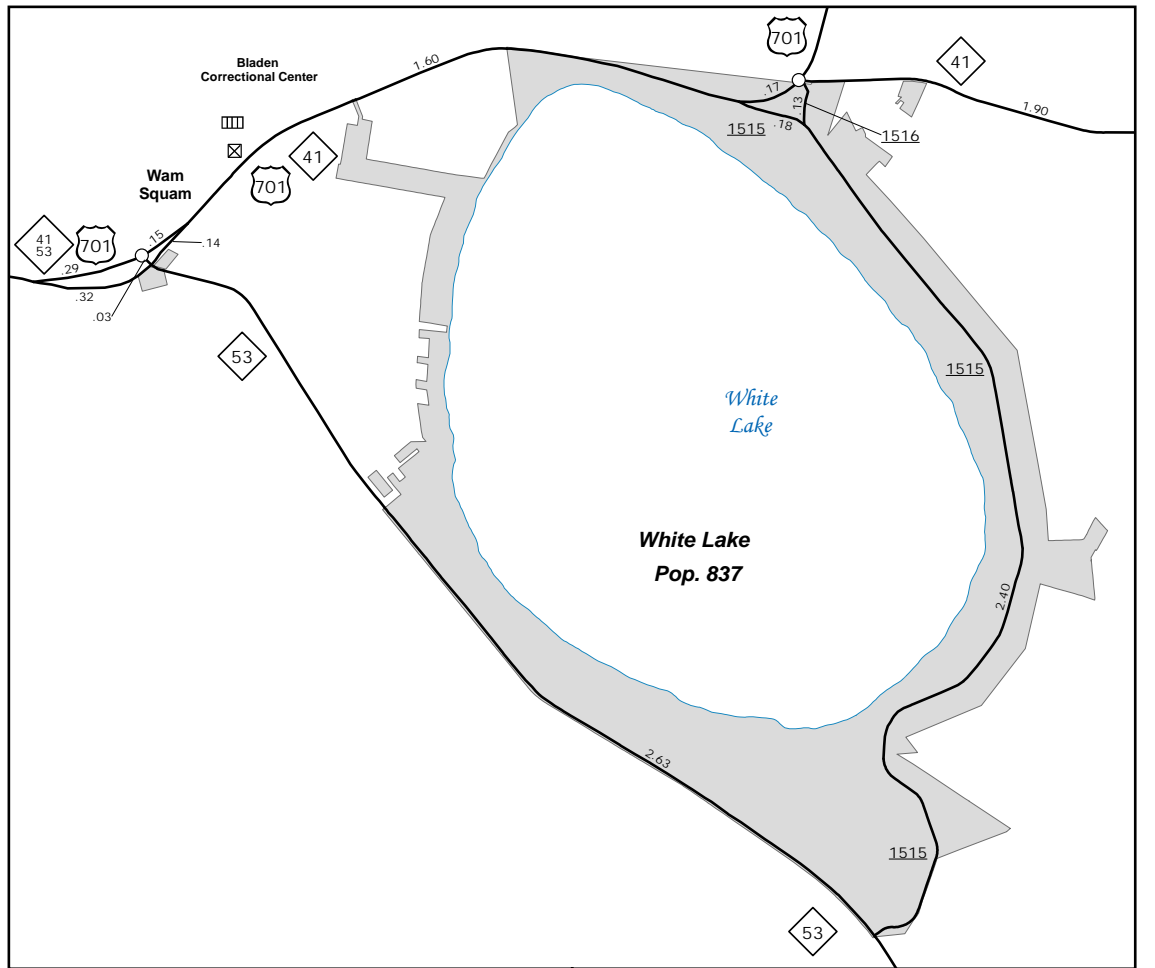
Dublin



Elizabethtown



Bladenboro

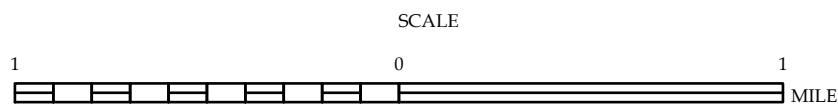


White Lake

ENLARGED MUNICIPAL AND SUBURBAN AREAS

BLADEN COUNTY NORTH CAROLINA

PREPARED BY THE
NORTH CAROLINA DEPARTMENT OF TRANSPORTATION
OPERATIONS PROGRAM MANAGEMENT UNIT - MAPPING SECTION
IN COOPERATION WITH THE
U.S. DEPARTMENT OF TRANSPORTATION
FEDERAL HIGHWAY ADMINISTRATION



10,000 FOOT GRID BASED ON NORTH CAROLINA PLANE COORDINATE SYSTEM
LAMBERT CONFORMAL CONIC PROJECTION