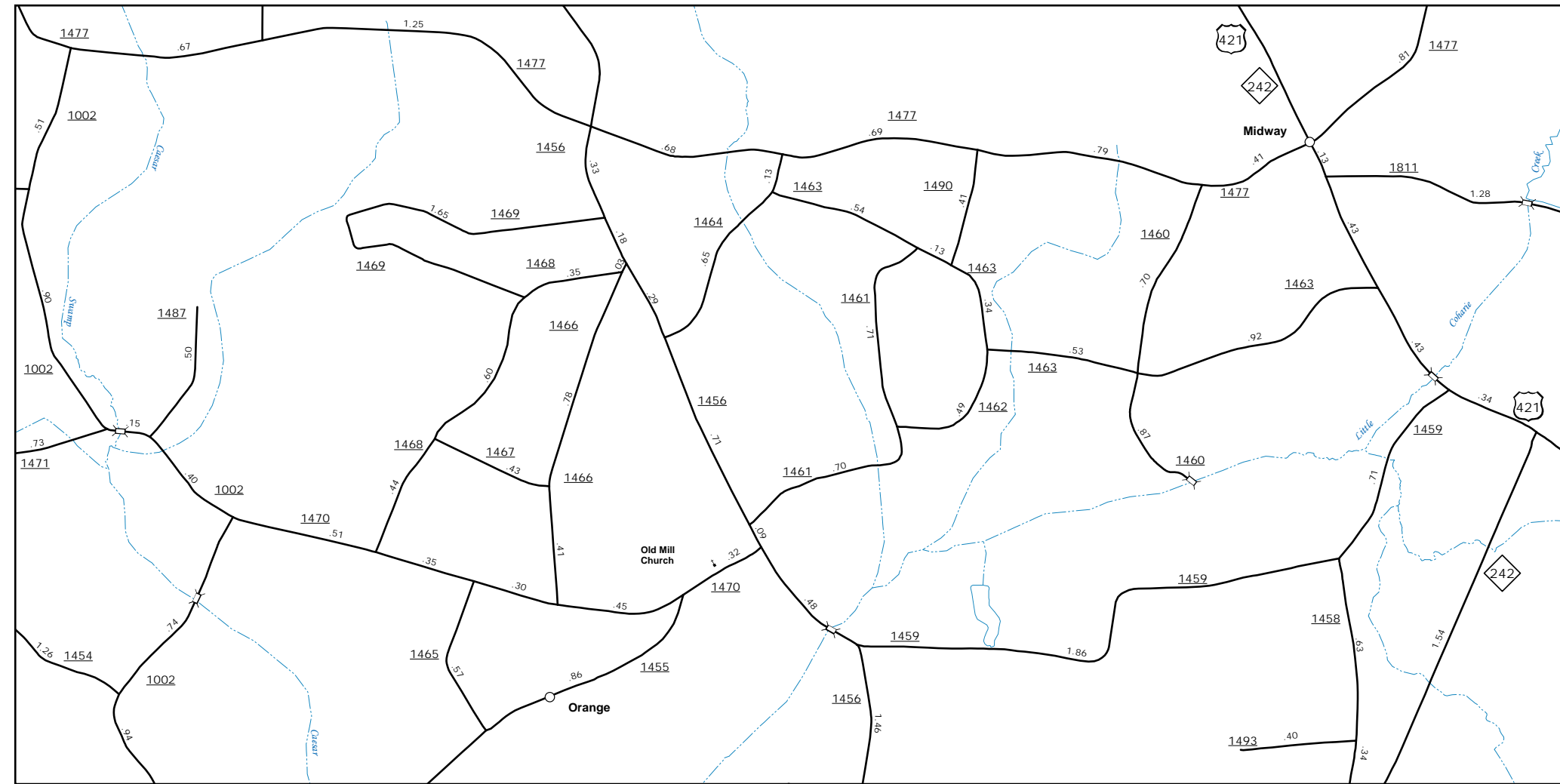
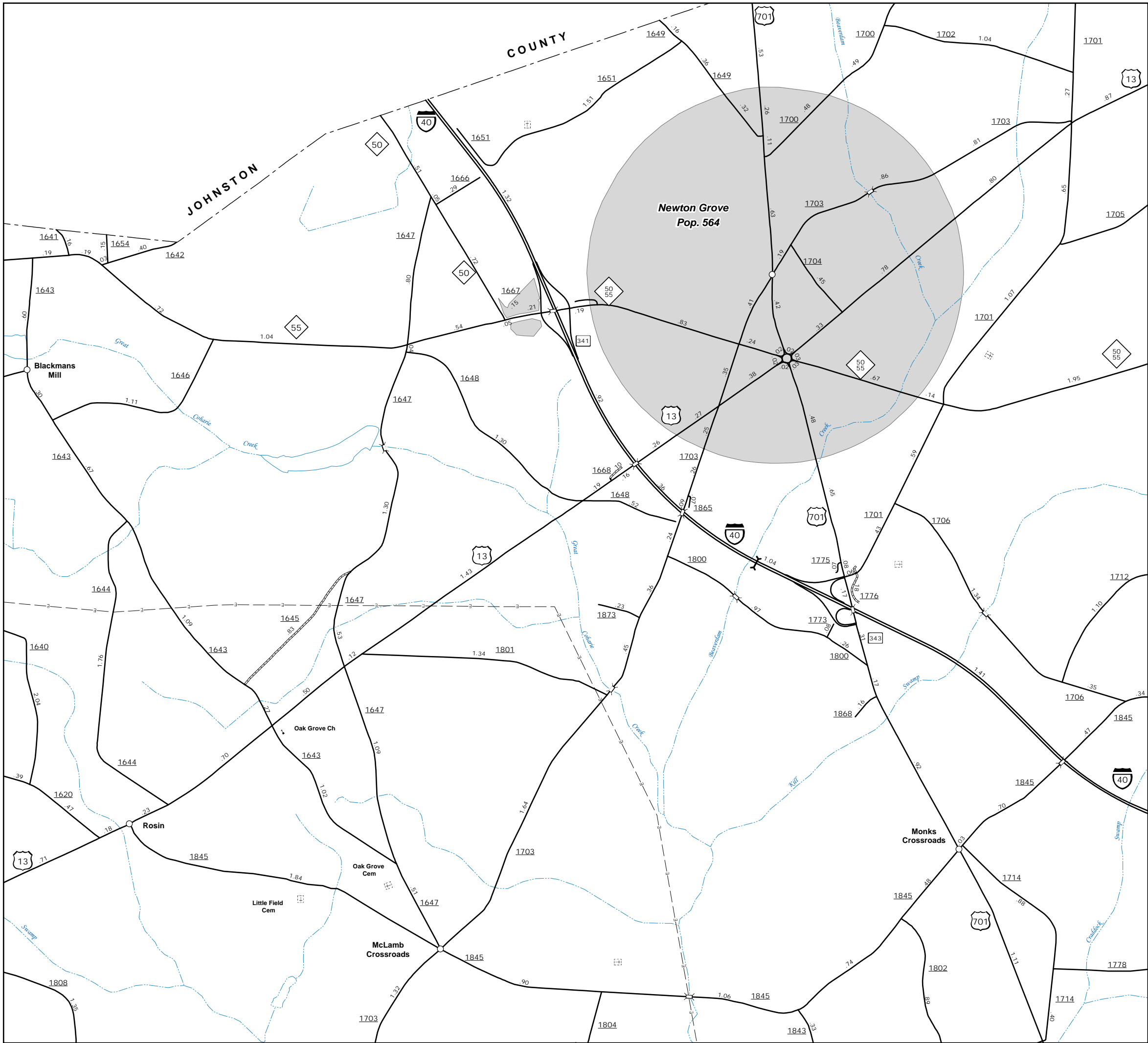


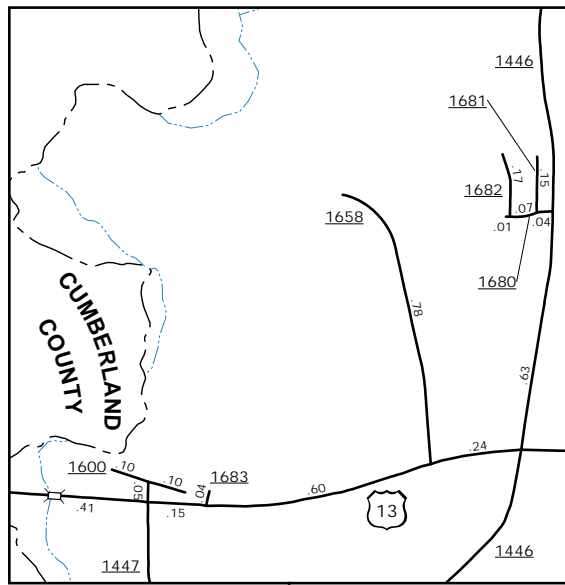
The Mapping Section's goal is to provide the most accurate and current information possible. Map data is compiled from numerous sources including aerial photography, ground surveys, and other data. While every effort is made to ensure accuracy, the Department of Transportation does not warrant the accuracy of the information. For more information, visit <http://www.ncdot.gov/transportation/mapping> and click on Data Providers or contact us by phone at (919) 835-8480.

COPIES OF THIS MAP ARE AVAILABLE
FOR PURCHASE AT A
REPUBLICAN NOMINAL COST.
ADDRESS:
N.C. DEPARTMENT OF TRANSPORTATION
MSAU-MAPPING SECTION
4809 BERNI RD.
RALEIGH, NC 27609

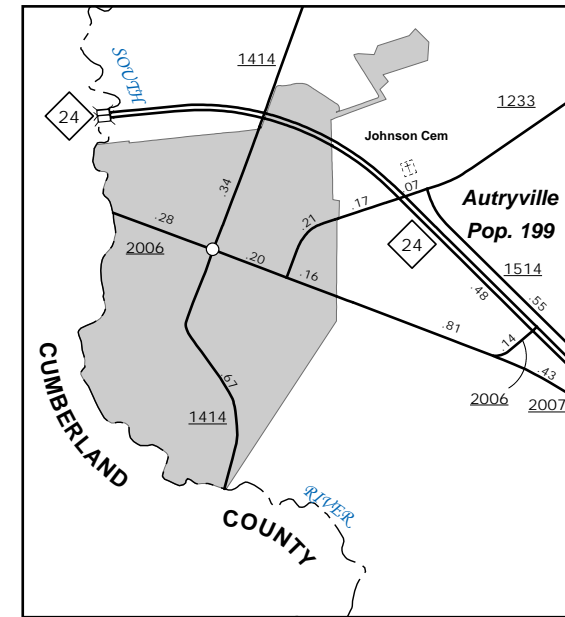


Newton Grove

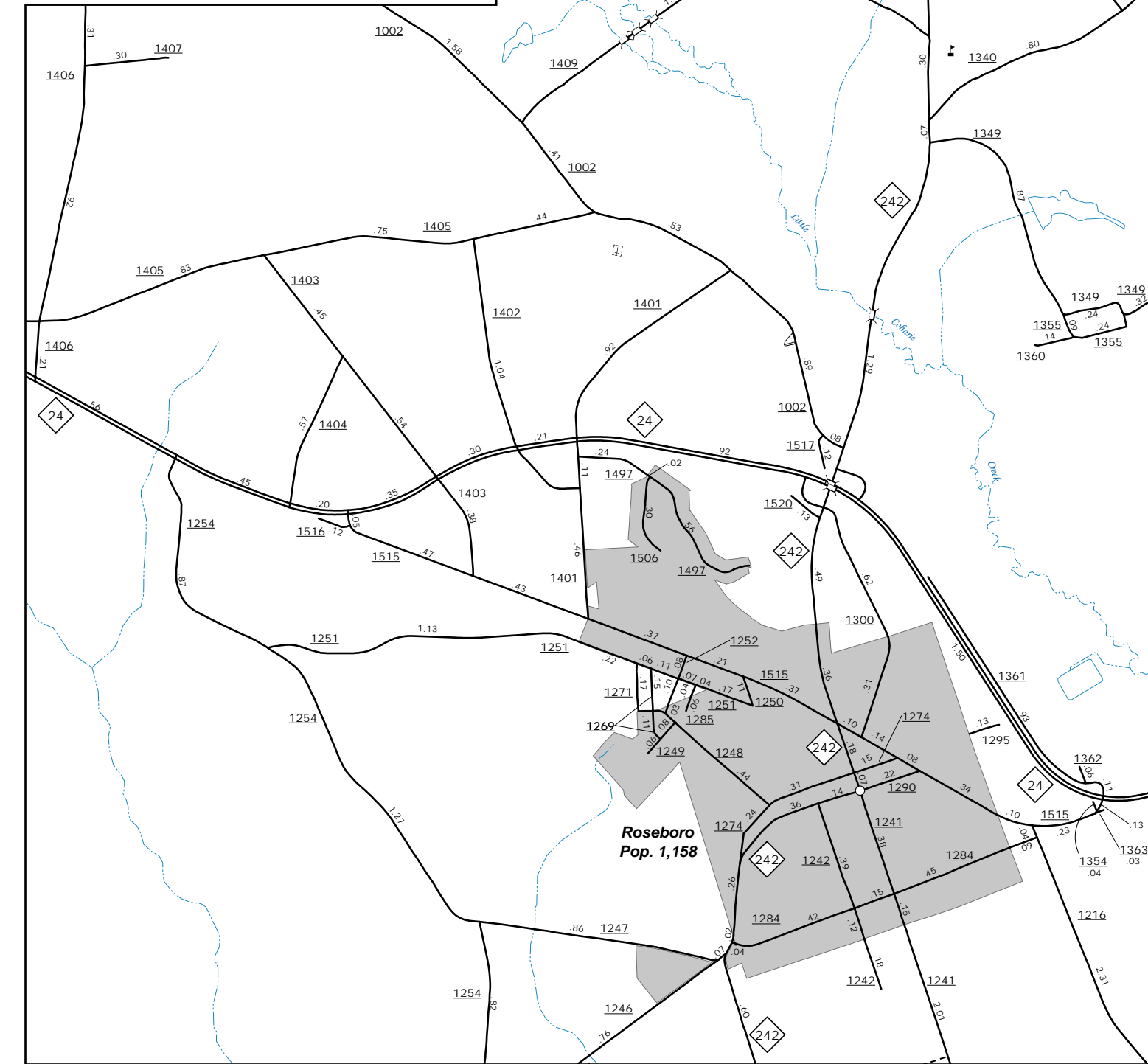
Midway



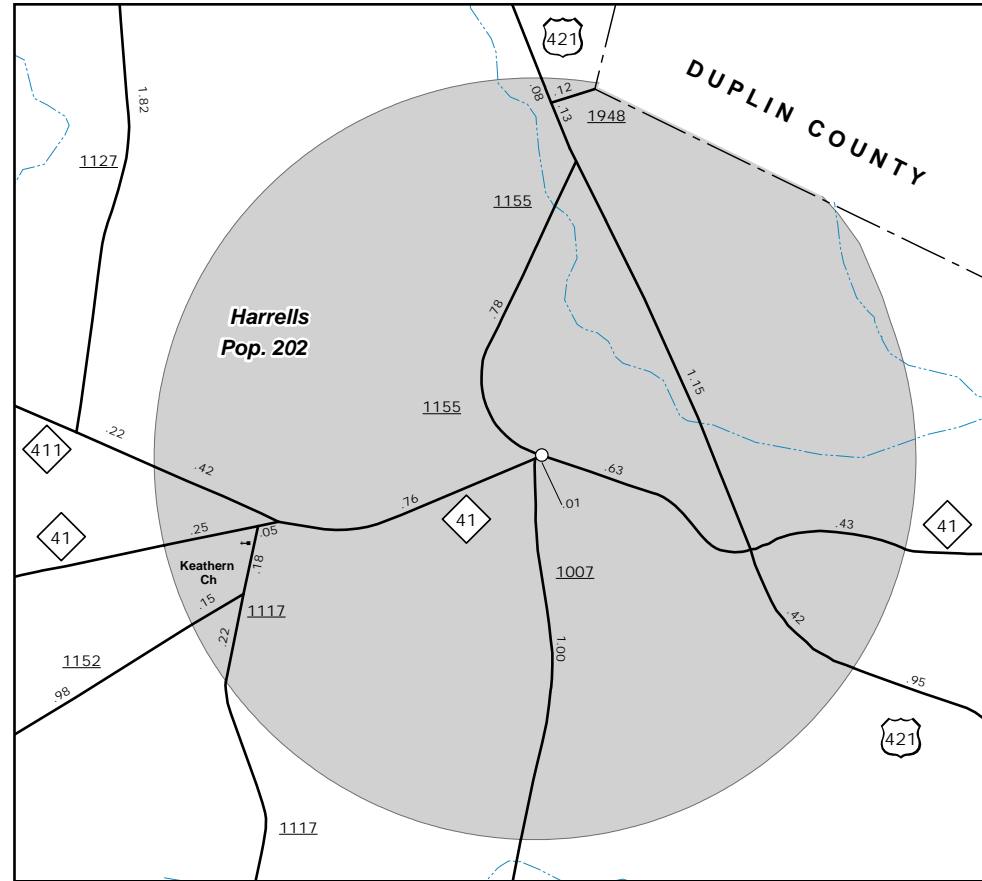
US13 West



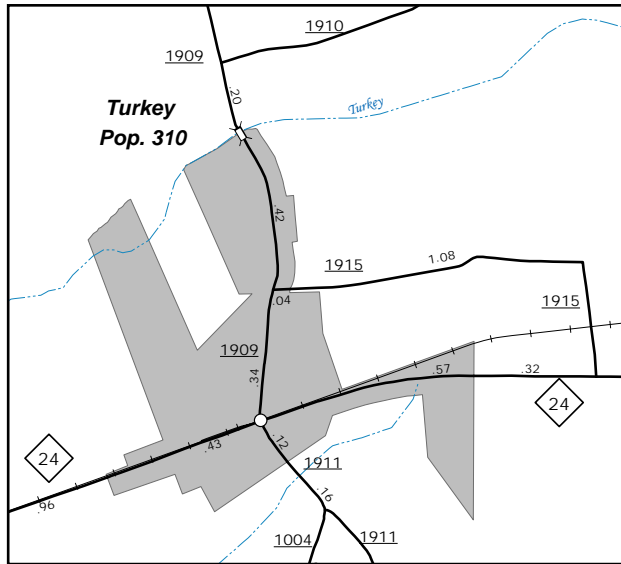
Autryville



Salemburg & Roseboro



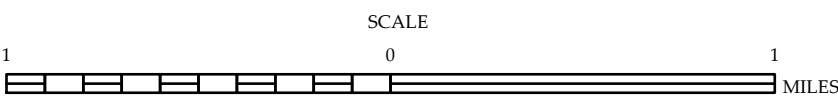
Harrells



Turkey



ENLARGED MUNICIPAL AND SUBURBAN AREAS
SAMPSON COUNTY
NORTH CAROLINA
PREPARED BY THE
NORTH CAROLINA DEPARTMENT OF TRANSPORTATION
OPERATIONS PROGRAM MANAGEMENT UNIT - MAPPING SECTION
IN COOPERATION WITH THE
U.S. DEPARTMENT OF TRANSPORTATION
FEDERAL HIGHWAY ADMINISTRATION



10,000 FOOT GRID BASED ON NORTH CAROLINA PLANE COORDINATE SYSTEM
LAMBERT CONFORMAL CONIC PROJECTION