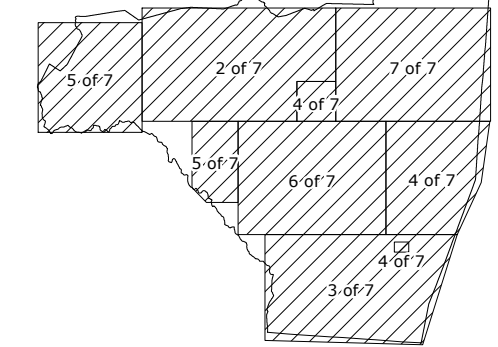
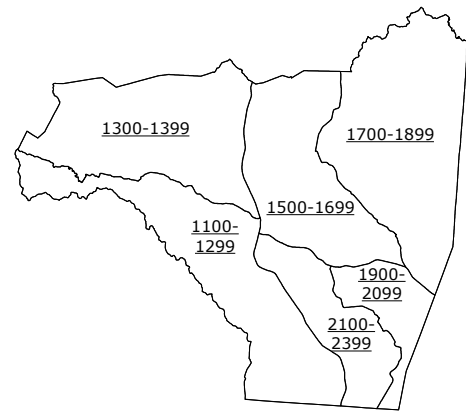
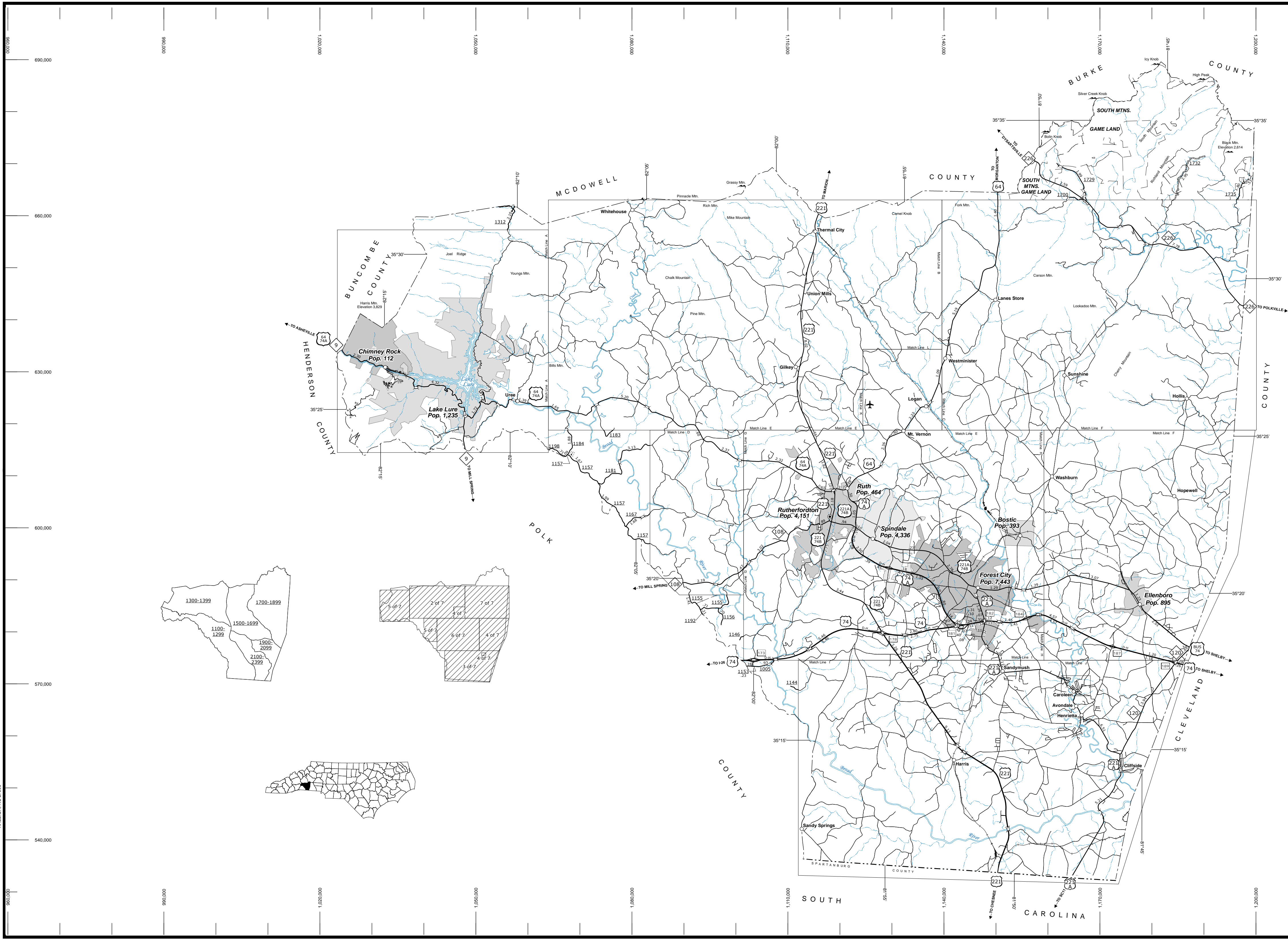


The Mapping Section's goal is to provide the most accurate and current information possible. Map data is compiled from numerous sources including aerial photography, ground surveys, and other reliable sources. While every effort is made to ensure accuracy, the user assumes all responsibility for the use of the map. For additional information, visit <http://www.ncdot.gov/transportation/mapping>, and click on Data Providers or contact us by phone at (919) 835-8480.

COPIES OF THIS MAP ARE AVAILABLE
FOR PURCHASE AT A PUBLIC NOMINAL COST.
ADDRESS:
N.C. DEPARTMENT OF TRANSPORTATION
MSAU - MAPPING SECTION
4809 BERT RD.
RALEIGH, NC 27608



LEGEND

- UNPAVED SURFACED ROAD
- HARD SURFACED ROAD
- NON-SYSTEM ROADS
- DIVIDED HIGHWAY W/ FRONTAGE ROADS
- PROJECTED LOCATION
- INTERSECTION DISTANCE
- TRAFFIC CIRCLE
- DETAILED HIGHWAY INTERCHANGE
- HIGHWAY BRIDGE
- RAILROAD BRIDGE
- DRAW SPAN ON BRIDGE
- PEDESTRIAN WALKWAY
- PEDESTRIAN UNDERPASS
- VEHICULAR UNDERPASS
- FORD
- TUNNEL
- CULVERT
- PIPE
- INTERSTATE HIGHWAY
- U.S. NUMBERED HIGHWAY
- N.C. NUMBERED HIGHWAY
- U.S. NUMBERED BICYCLE ROUTE
- N.C. NUMBERED BICYCLE ROUTE
- INTERSTATE INTERCHANGE NUMBER
- SECONDARY ROAD NUMBER
- UTILITY LINES
- RAILROAD
- RAILROAD STATION
- GRADE CROSSING
- INSET AREA
- NATIONAL FOREST BOUNDARY
- RESERVATION OR PARK BOUNDARY
- STATE FOREST BOUNDARY
- STATE GAMEDLAND BOUNDARY
- FEDERAL GAMEDLAND BOUNDARY
- MILITARY RESERVATION BOUNDARY
- STATE LINE
- COUNTY LINE
- CITY LIMIT
- FERRY ROUTE
- NARROW CREEK OR STREAM
- WIDE RIVER OR CREEK
- RESERVOIR, POND OR LAKE W/ ISLAND
- DAM OR DAM WITH LOCK
- WATERFALL
- SWAMP
- COMMUNITY, TOWN OR CITY CENTER
- COUNTY SEAT
- STATE CAPITAL
- SCHOOL
- COLLEGE OR UNIVERSITY
- HOSPITAL
- COAST GUARD STATION
- CHURCH
- CHURCH WITH CEMETERY
- CEMETERY
- PATROL STATION
- CORRECTION OR PENAL INSTITUTION
- QUARRY
- MINE OR PIT
- HIGHWAY GARAGE OR MAINT. YARD
- HIGHWAY DIV. OR DIST. OFFICE
- MILITARY POST
- WILDLIFE REFUGE
- WEIGH STATION
- FAIRGROUNDS
- HISTORICAL SITE
- POINTS OF INTEREST
- STATE FOREST
- LIGHTHOUSE
- MOUNTAIN SUMMIT
- OVERLOOK
- GEODETIC MARKER
- REST AREA
- VISITOR CTR/REST AREA
- WELCOME CTR/REST AREA
- MAJOR AIRPORT
- AIRPORT
- MILITARY AIRPORT
- HELIPORT

MS
NCDOT
NORTH CAROLINA DEPARTMENT OF TRANSPORTATION

RUTHERFORD COUNTY
NORTH CAROLINA

PREPARED BY THE
NORTH CAROLINA DEPARTMENT OF TRANSPORTATION
OPERATIONS PROGRAM MANAGEMENT UNIT - MAPPING SECTION
IN COOPERATION WITH THE
U.S. DEPARTMENT OF TRANSPORTATION
FEDERAL HIGHWAY ADMINISTRATION

SCALE
1 0 1 2 3 4
MILES

10,000 FOOT GRID BASED ON NORTH CAROLINA PLANE COORDINATE SYSTEM
LAMBERT CONFORMAL CONIC PROJECTION