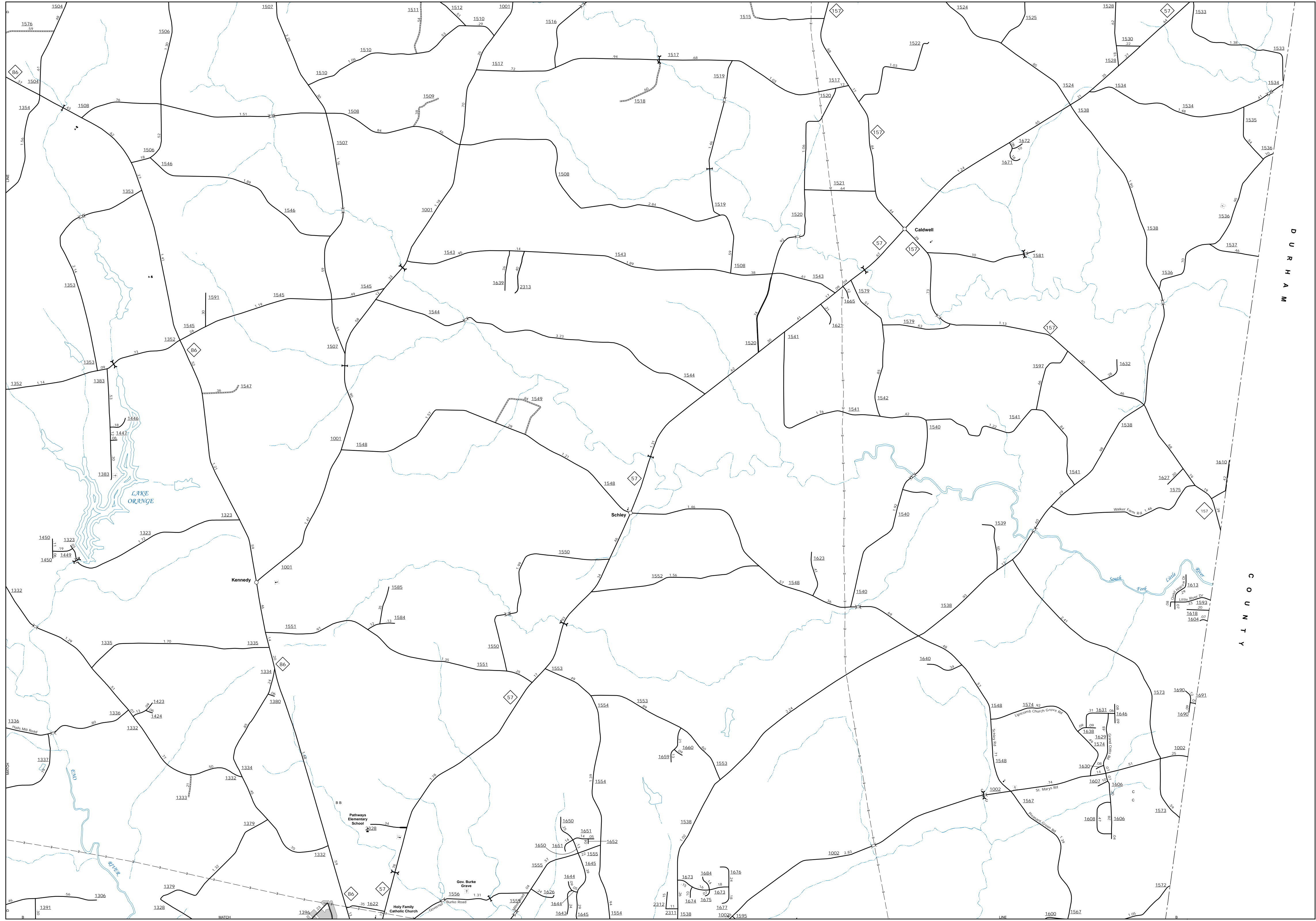


The Mapping Section's goal is to provide the most accurate and current information possible. Map data is compiled from numerous sources and is subject to change without notice. The accuracy of the information is not guaranteed. For more information, visit the website at <http://www.ncdot.gov/transportation/mapping>. For additional information, visit <http://www.ncdot.gov/transportation/mapping> and click on Data Providers or contact us by phone at (919) 855-8490.

COPIES OF THIS MAP ARE AVAILABLE  
FOR PURCHASE AT A PUBLIC AT NOMINAL COST.  
ADDRESS: N.C. DEPARTMENT OF TRANSPORTATION  
MSAU - MAPPING SECTION  
4809 BERNI RD.  
RALEIGH, NC 27608



Caldwell, Kennedy, Schley and Vicinity

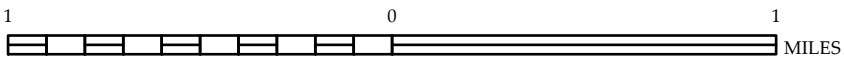


ENLARGED MUNICIPAL AND SUBURBAN AREAS

## ORANGE COUNTY NORTH CAROLINA

PREPARED BY THE  
NORTH CAROLINA DEPARTMENT OF TRANSPORTATION  
OPERATIONS PROGRAM MANAGEMENT UNIT - MAPPING SECTION  
IN COOPERATION WITH THE  
U.S. DEPARTMENT OF TRANSPORTATION  
FEDERAL HIGHWAY ADMINISTRATION

SCALE



10,000 FOOT GRID BASED ON NORTH CAROLINA PLANE COORDINATE SYSTEM  
LAMBERT CONFORMAL CONIC PROJECTION

SHEET 4 OF 5