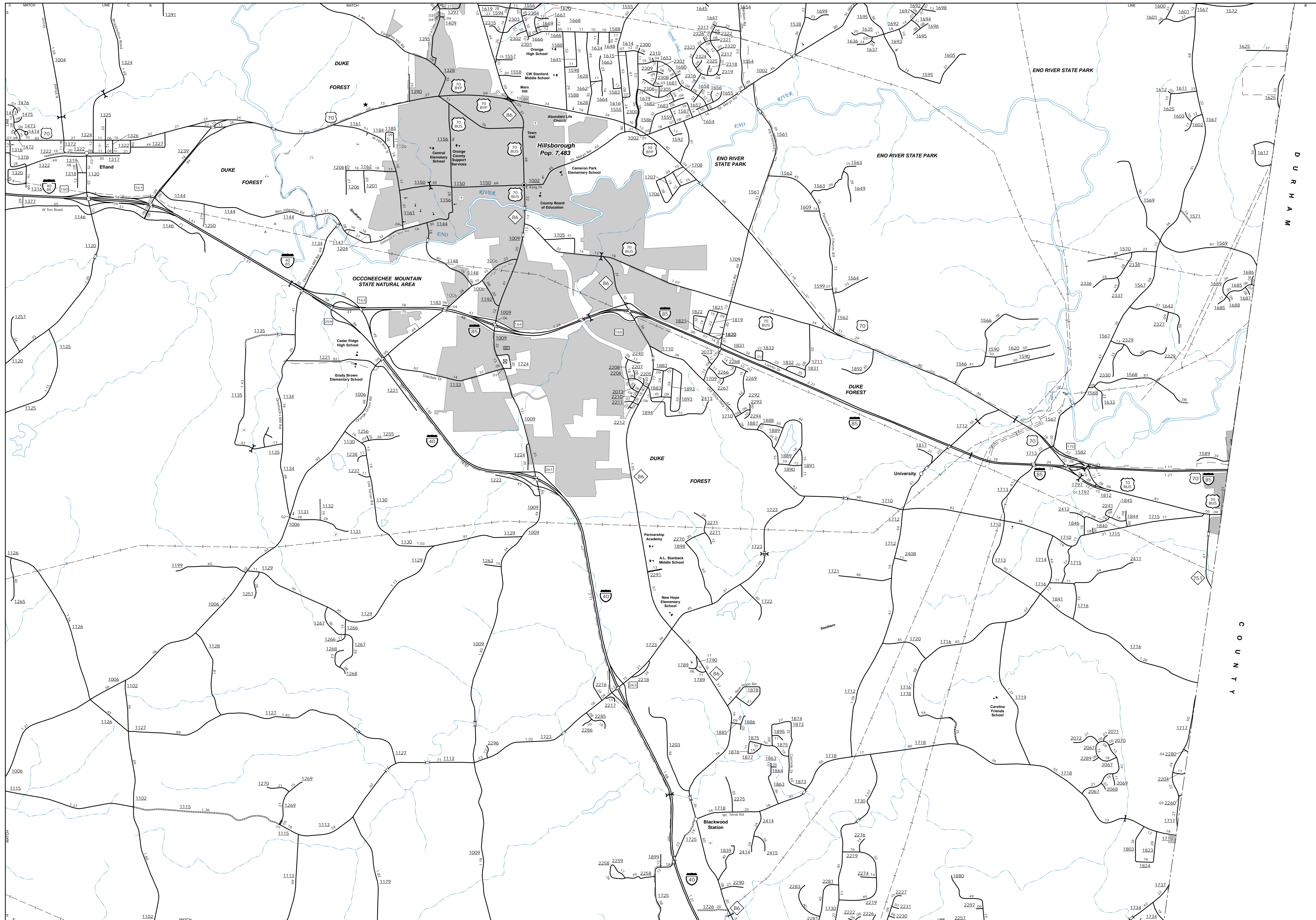


The Mapping Section's goal is to provide the most accurate and current information possible. Map data is compiled from numerous sources, including aerial photography, ground surveys, and other reliable sources. The accuracy of the information is not guaranteed. The information is provided for informational purposes only. For additional information, visit <http://www.ncdot.gov/travelinformation>, and click on Data Providers or contact us by phone at (919) 855-8490.

COPIES OF THIS MAP ARE AVAILABLE
FROM THE PUBLIC AT NOMINAL COST.
ADDRESS: N.C. DEPARTMENT OF TRANSPORTATION
MSAU - MAPPING SECTION
4809 BERNI RD.
RALEIGH, NC 27609



Hillsborough and Vicinity

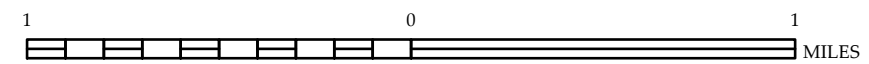


ENLARGED MUNICIPAL AND SUBURBAN AREAS

ORANGE COUNTY NORTH CAROLINA

PREPARED BY THE
NORTH CAROLINA DEPARTMENT OF TRANSPORTATION
OPERATIONS PROGRAM MANAGEMENT UNIT - MAPPING SECTION
IN COOPERATION WITH THE
U.S. DEPARTMENT OF TRANSPORTATION
FEDERAL HIGHWAY ADMINISTRATION

SCALE



10,000 FOOT GRID BASED ON NORTH CAROLINA PLANE COORDINATE SYSTEM
LAMBERT CONFORMAL CONIC PROJECTION

SHEET 3 OF 5