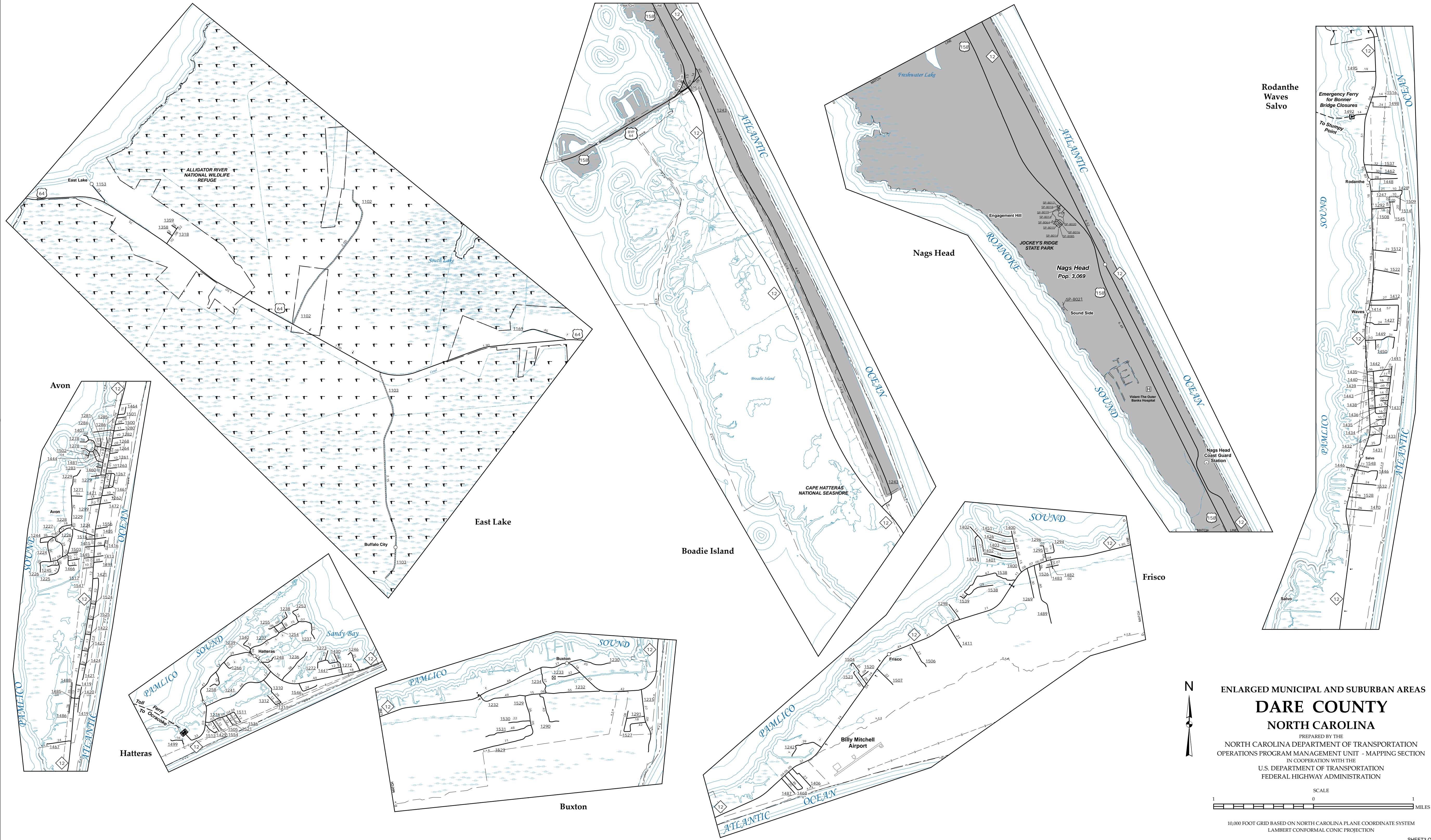


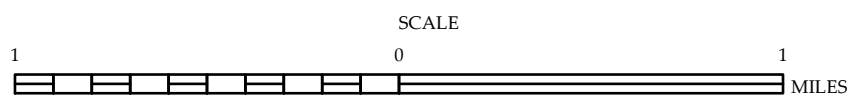
The Mapping Section's goal is to provide the most accurate and current information possible. Map data is compiled from various sources including aerial photography, ground surveys, and other data. While every effort is made to ensure the accuracy and completeness of the information shown on this map, the user should be aware that the map is not a substitute for a ground survey. The information shown on this map was last updated in July 2021. For additional information, visit <http://www.dco.nc.gov/travel/baltimore> and click on Data Providers or contact us by phone at (919) 855-9440.

COPIES OF THIS MAP ARE AVAILABLE
AT A PUBLIC LIBRARY OR
ADDRESS:
N.C. DEPARTMENT OF TRANSPORTATION
S&AU - MAPPING SECTION
4809 BERNI RD.
RALEIGH, NC 27609



Rodanthe
Waves
Salvo

ENLARGED MUNICIPAL AND SUBURBAN AREAS
DARE COUNTY
NORTH CAROLINA
PREPARED BY THE
NORTH CAROLINA DEPARTMENT OF TRANSPORTATION
OPERATIONS PROGRAM MANAGEMENT UNIT - MAPPING SECTION
IN COOPERATION WITH THE
U.S. DEPARTMENT OF TRANSPORTATION
FEDERAL HIGHWAY ADMINISTRATION



10,000 FOOT GRID BASED ON NORTH CAROLINA PLANE COORDINATE SYSTEM
LAMBERT CONFORMAL CONIC PROJECTION