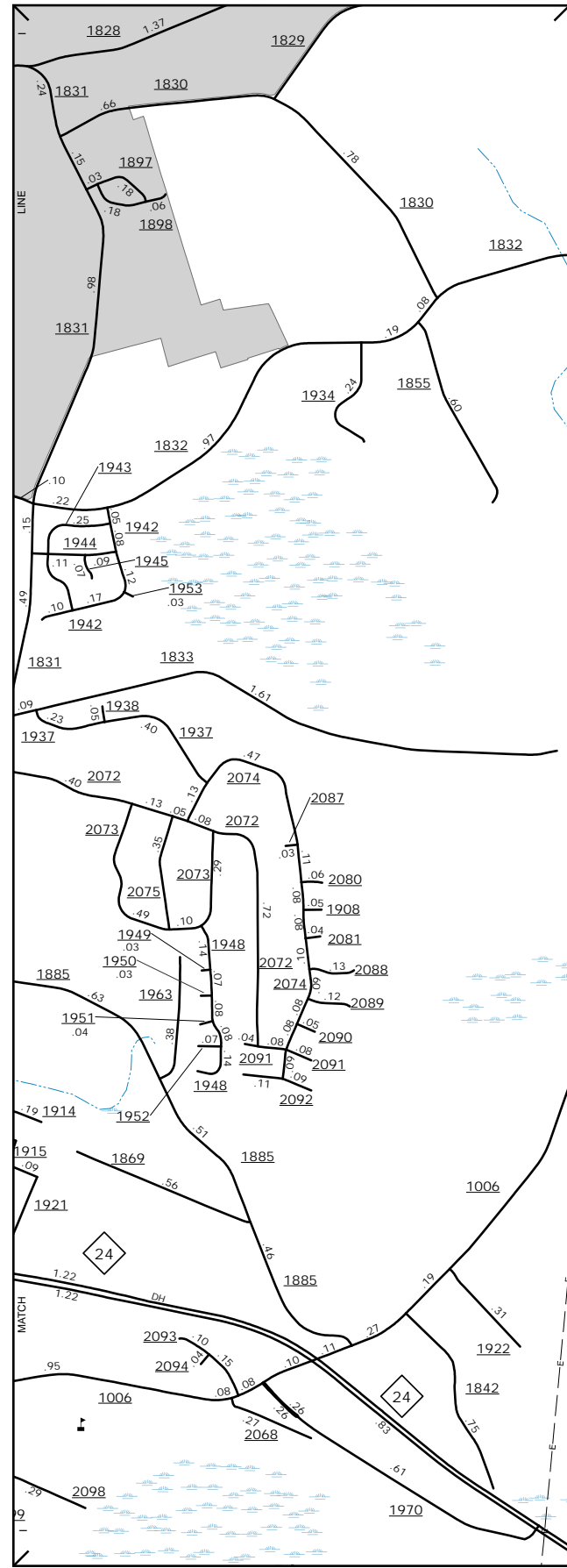
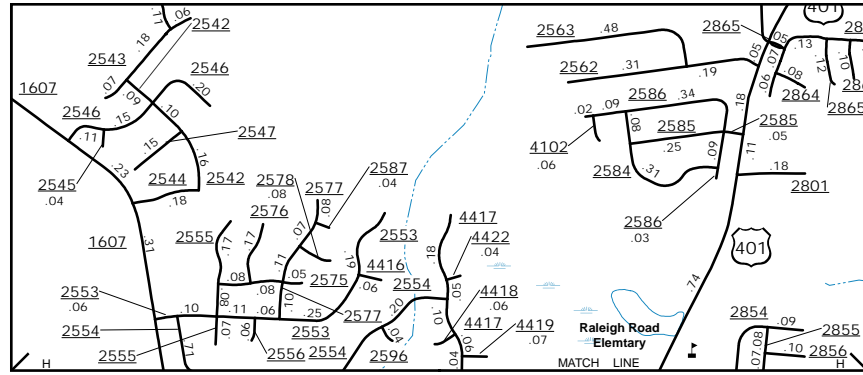


The Mapping Section's goal is to provide the most accurate and current information possible. Map data is compiled from numerous sources with varying dates of publication and map accuracy standards. As a result, the accuracy of the information shown on this map may vary. This map was last updated in June 2024. For additional information, visit <https://www.ncdot.gov/levelofdetail.aspx> and click on Data Providers or contact us by phone at (919) 855-8480.

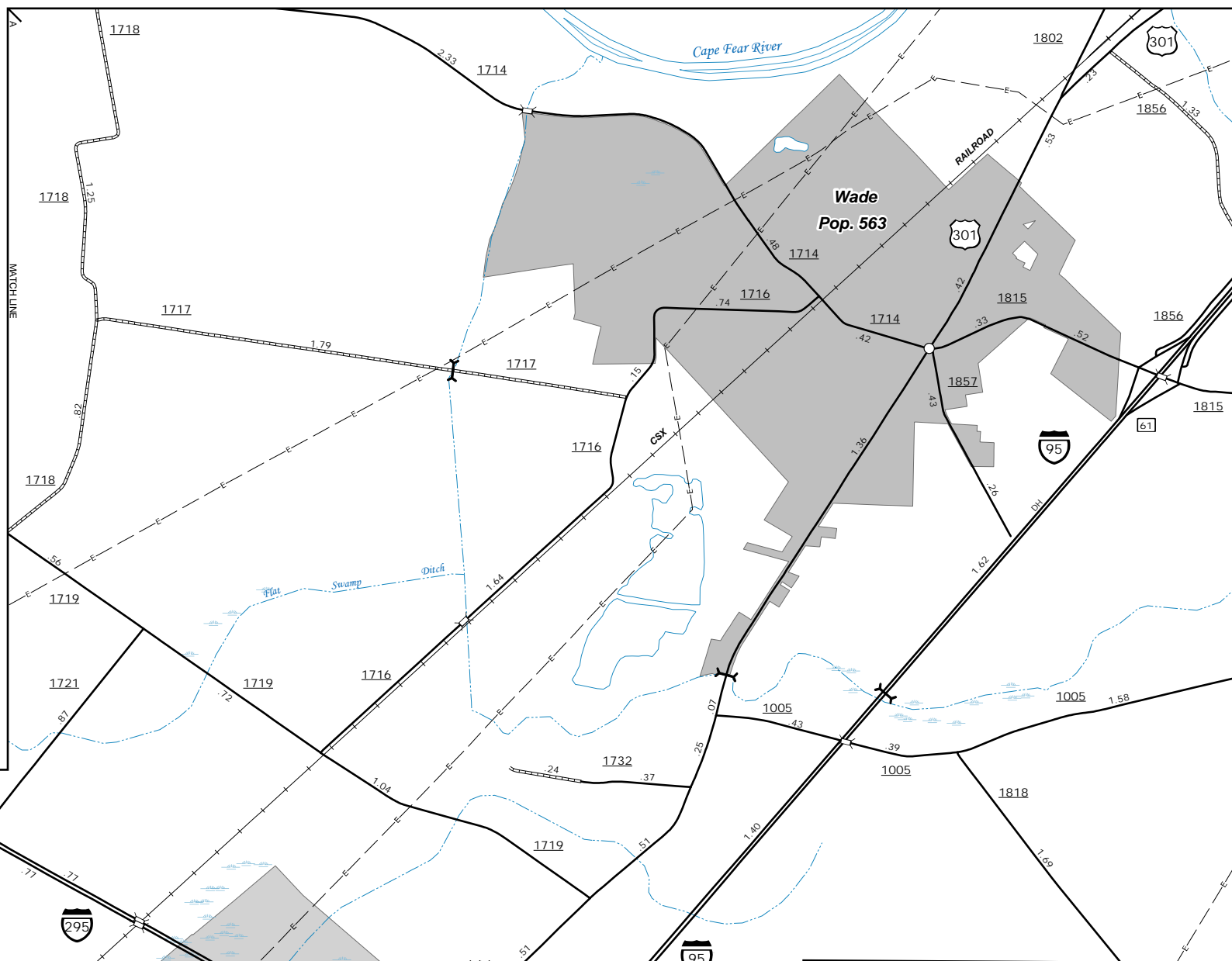
COPIES OF THIS MAP ARE AVAILABLE  
FOR PURCHASE AT A PUBLIC NOMINAL COST.  
ADDRESS: NORTH CAROLINA  
N.C. DEPARTMENT OF TRANSPORTATION  
MSAU - MAPPING SECTION  
4809 BERNI, CO.  
COLUMBIA, NC 28038



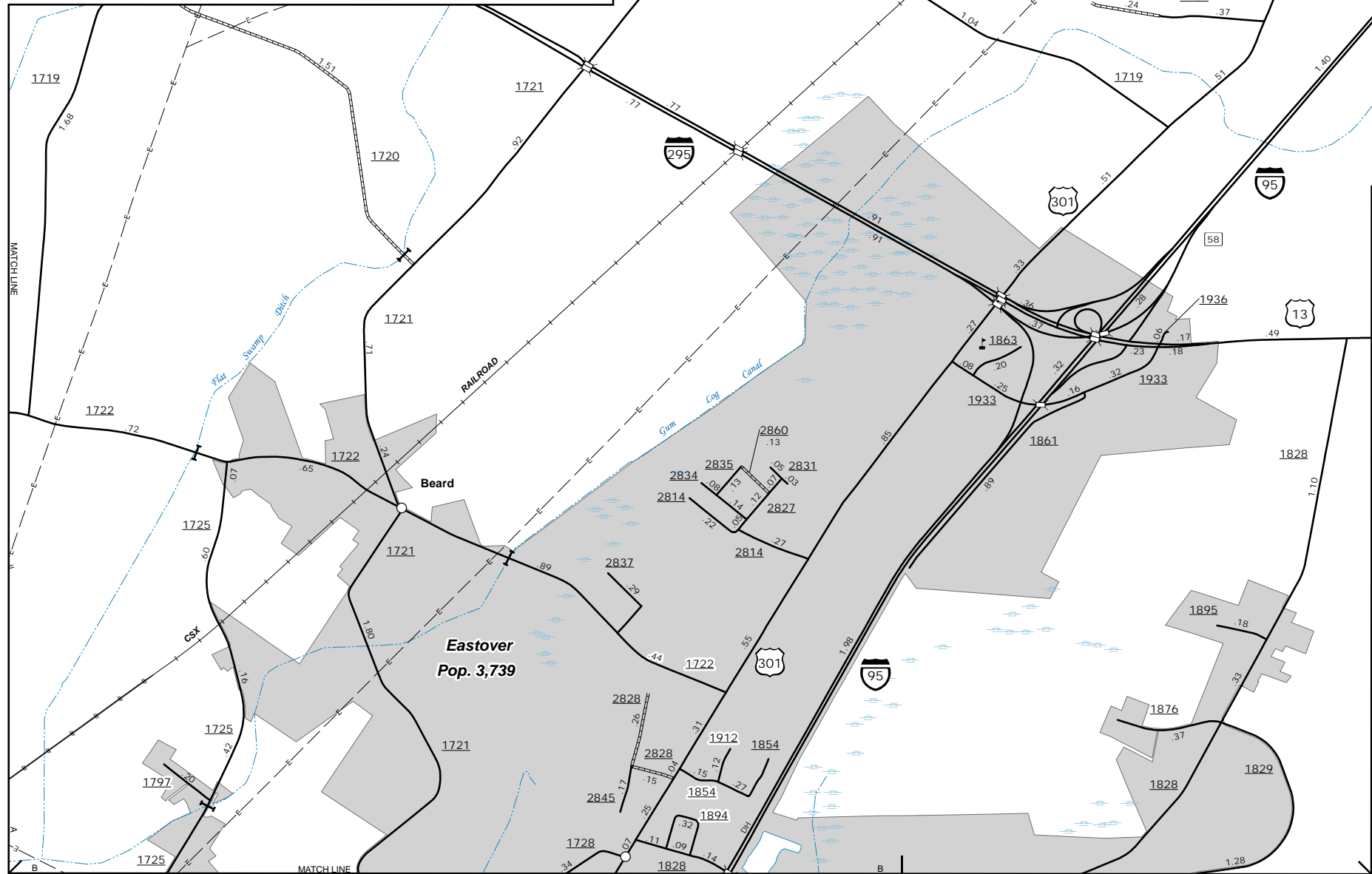
East Fayetteville



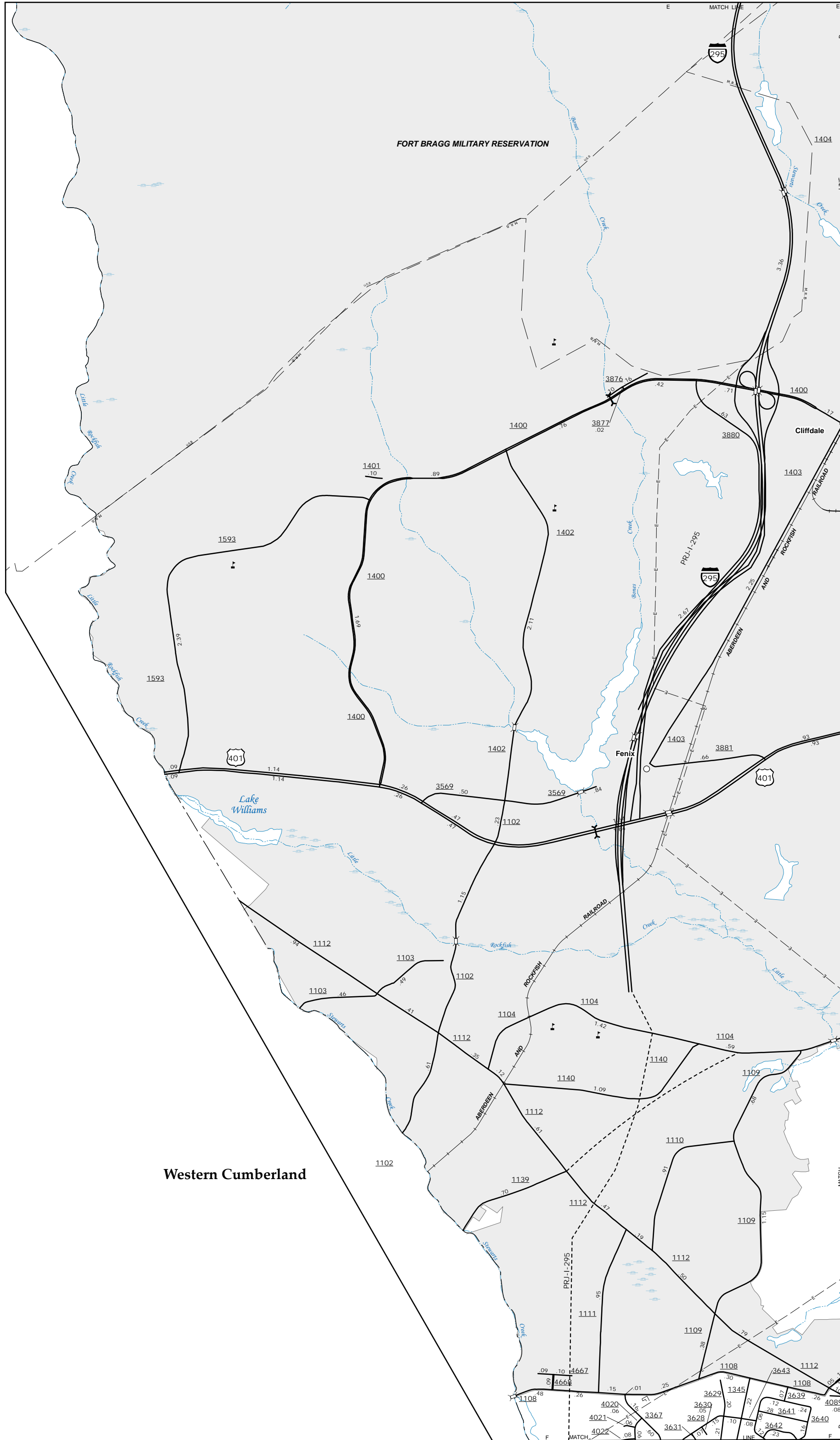
Inset 2



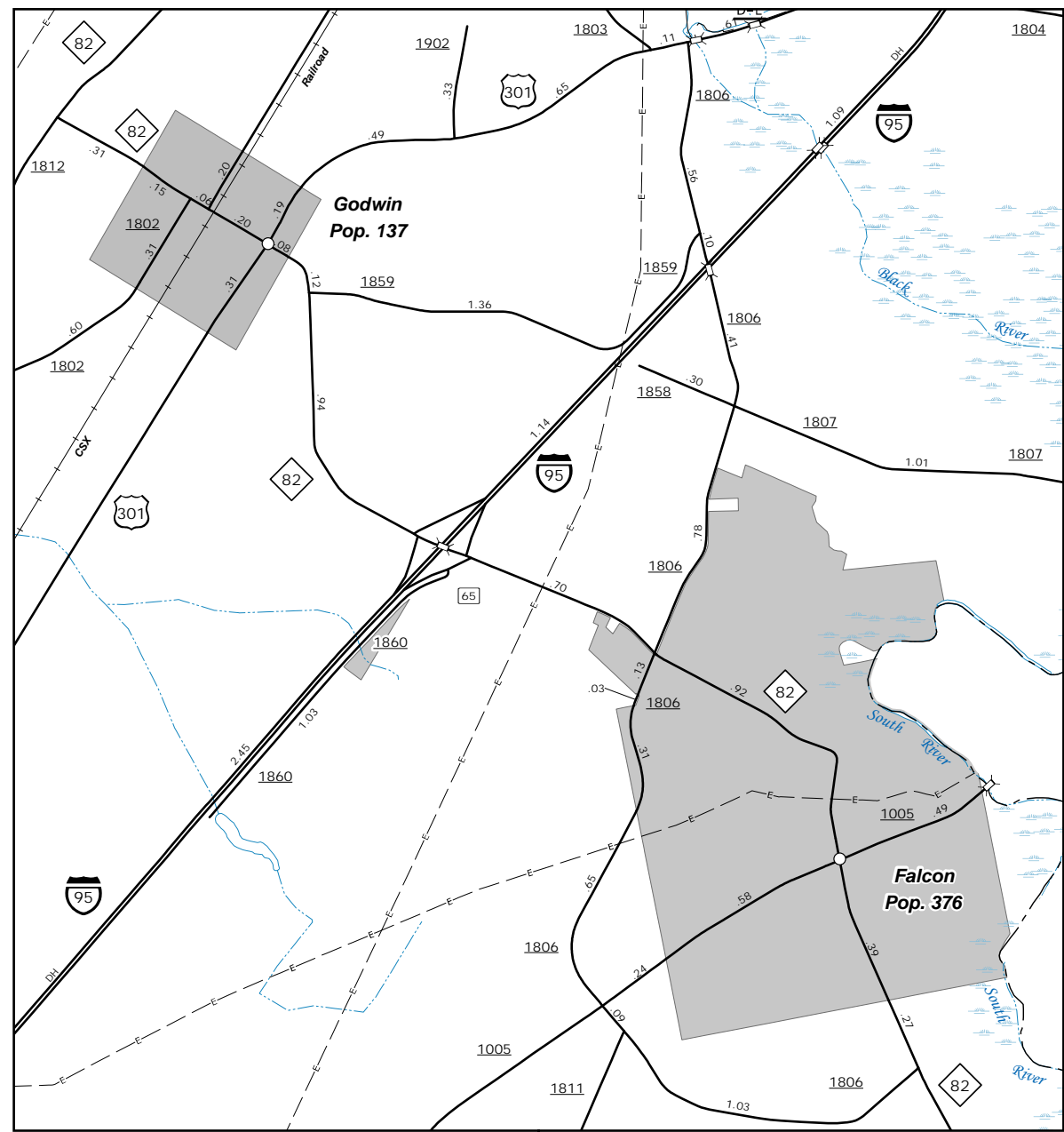
Wade



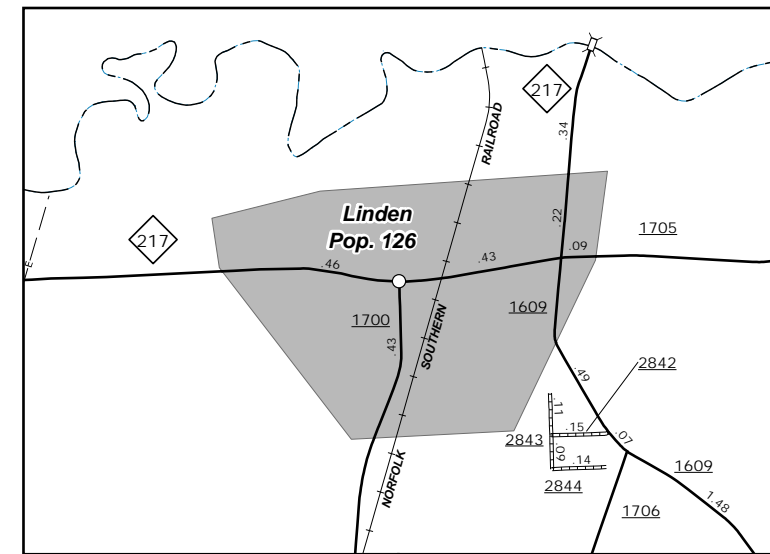
Eastover  
Pop. 3,739



Western Cumberland



Falcon

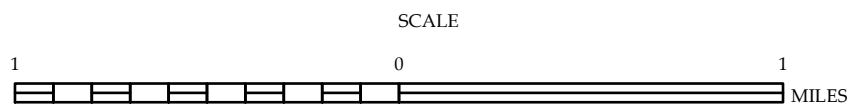


Linden



## ENLARGED MUNICIPAL AND SUBURBAN AREAS CUMBERLAND COUNTY NORTH CAROLINA

PREPARED BY THE  
NORTH CAROLINA DEPARTMENT OF TRANSPORTATION  
OPERATIONS PROGRAM MANAGEMENT UNIT - MAPPING SECTION  
IN COOPERATION WITH THE  
U.S. DEPARTMENT OF TRANSPORTATION  
FEDERAL HIGHWAY ADMINISTRATION



10,000 FOOT GRID BASED ON NORTH CAROLINA PLANE COORDINATE SYSTEM  
LAMBERT CONFORMAL CONIC PROJECTION