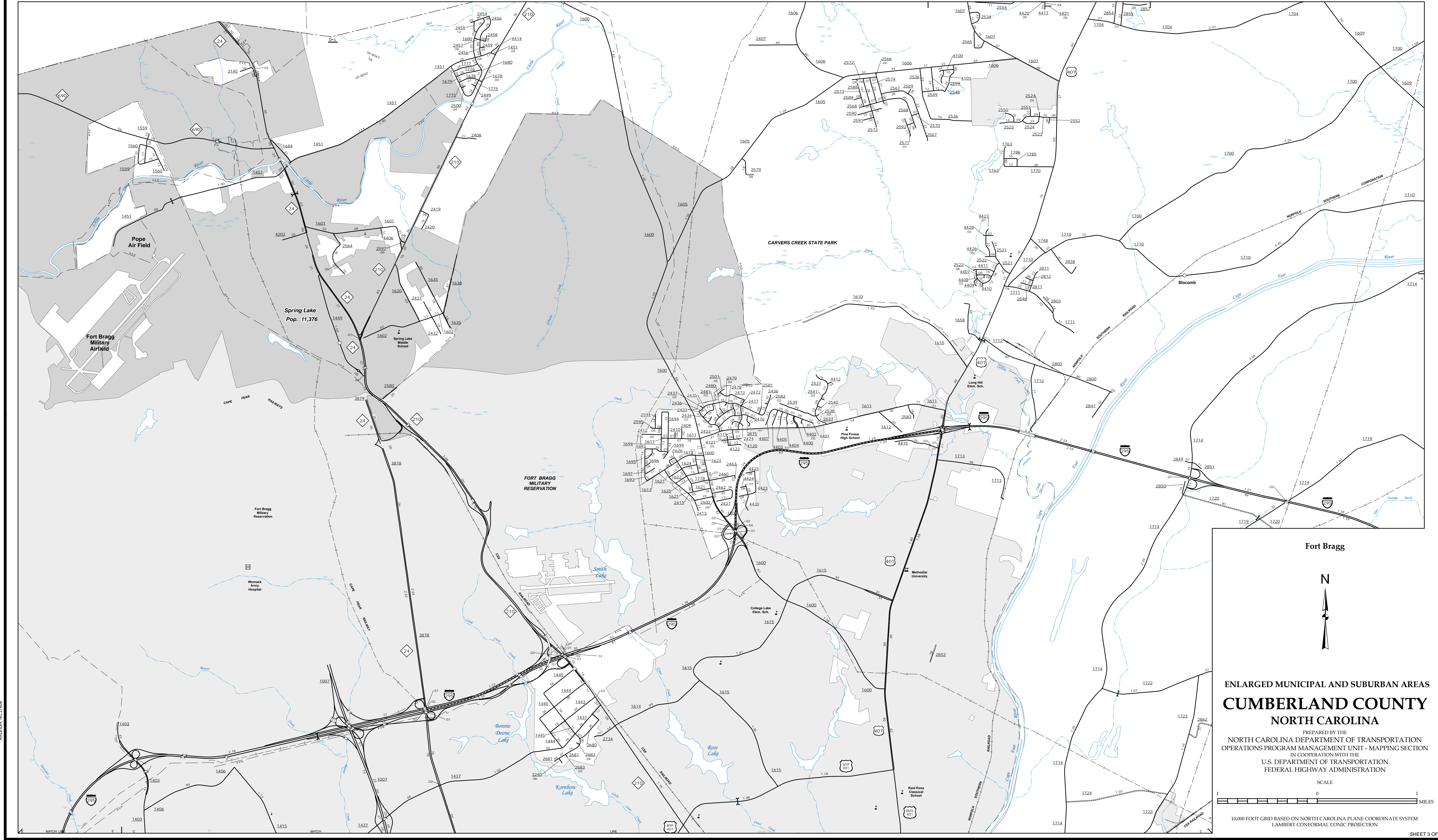


The Mapping Section's goal is to provide the most accurate and current information possible. Map data is compiled from numerous sources with varying dates of publication and map accuracy standards. As a result, the accuracy of the information shown on this map may vary. For more information, visit the Mapping Section's website at <http://www.ncdot.gov/travel/mapping> and click on Data Providers or contact us by phone at (919) 855-8490.

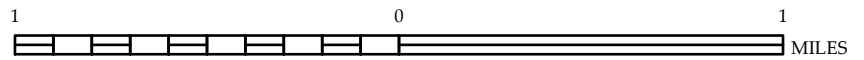
COPIES OF THIS MAP ARE AVAILABLE
FROM THE NORTH CAROLINA
N.C. DEPARTMENT OF TRANSPORTATION
ADDRESS: MAPS SECTION
4609 BERNI RD.
RALEIGH, NC 27606



ENLARGED MUNICIPAL AND SUBURBAN AREAS
CUMBERLAND COUNTY
NORTH CAROLINA

PREPARED BY THE
NORTH CAROLINA DEPARTMENT OF TRANSPORTATION
OPERATIONS PROGRAM MANAGEMENT UNIT - MAPPING SECTION
IN COOPERATION WITH THE
U.S. DEPARTMENT OF TRANSPORTATION
FEDERAL HIGHWAY ADMINISTRATION

SCALE



10,000 FOOT GRID BASED ON NORTH CAROLINA PLANE COORDINATE SYSTEM
LAMBERT CONFORMAL CONIC PROJECTION