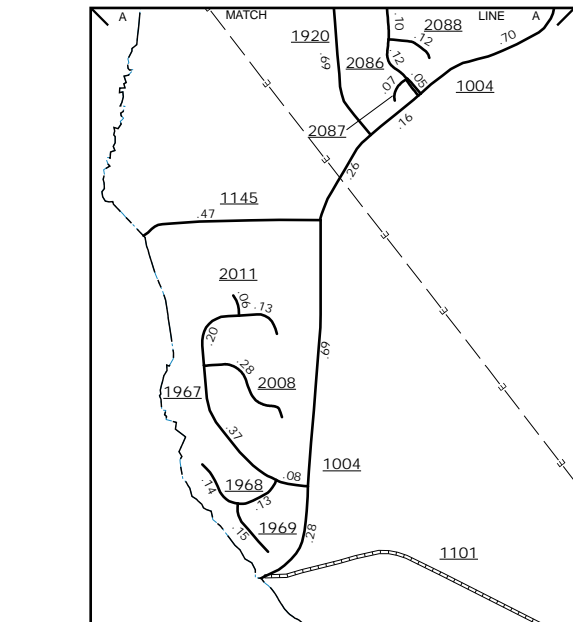
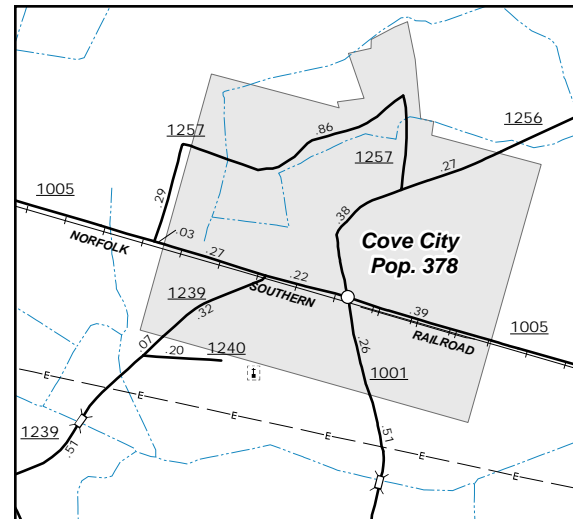
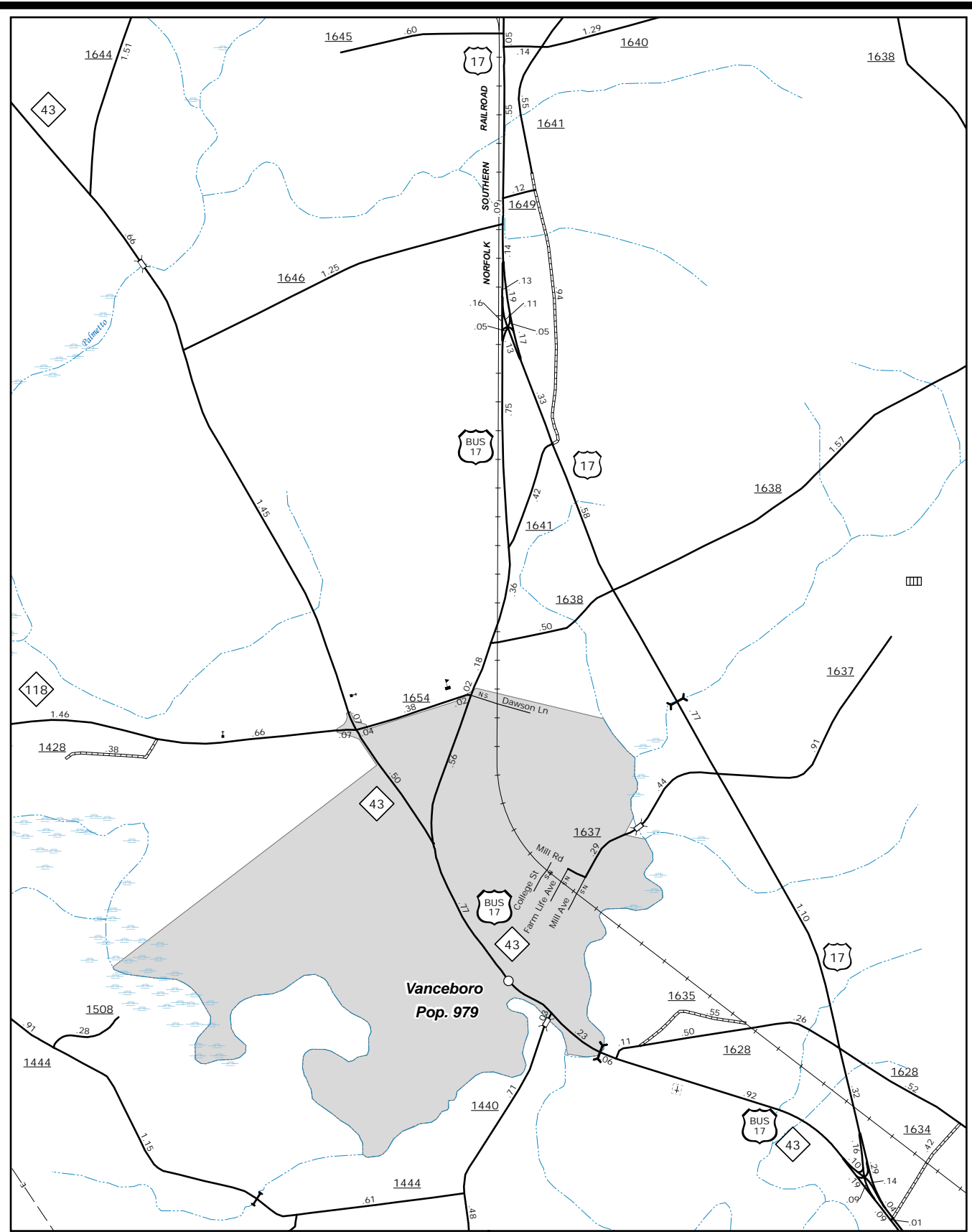
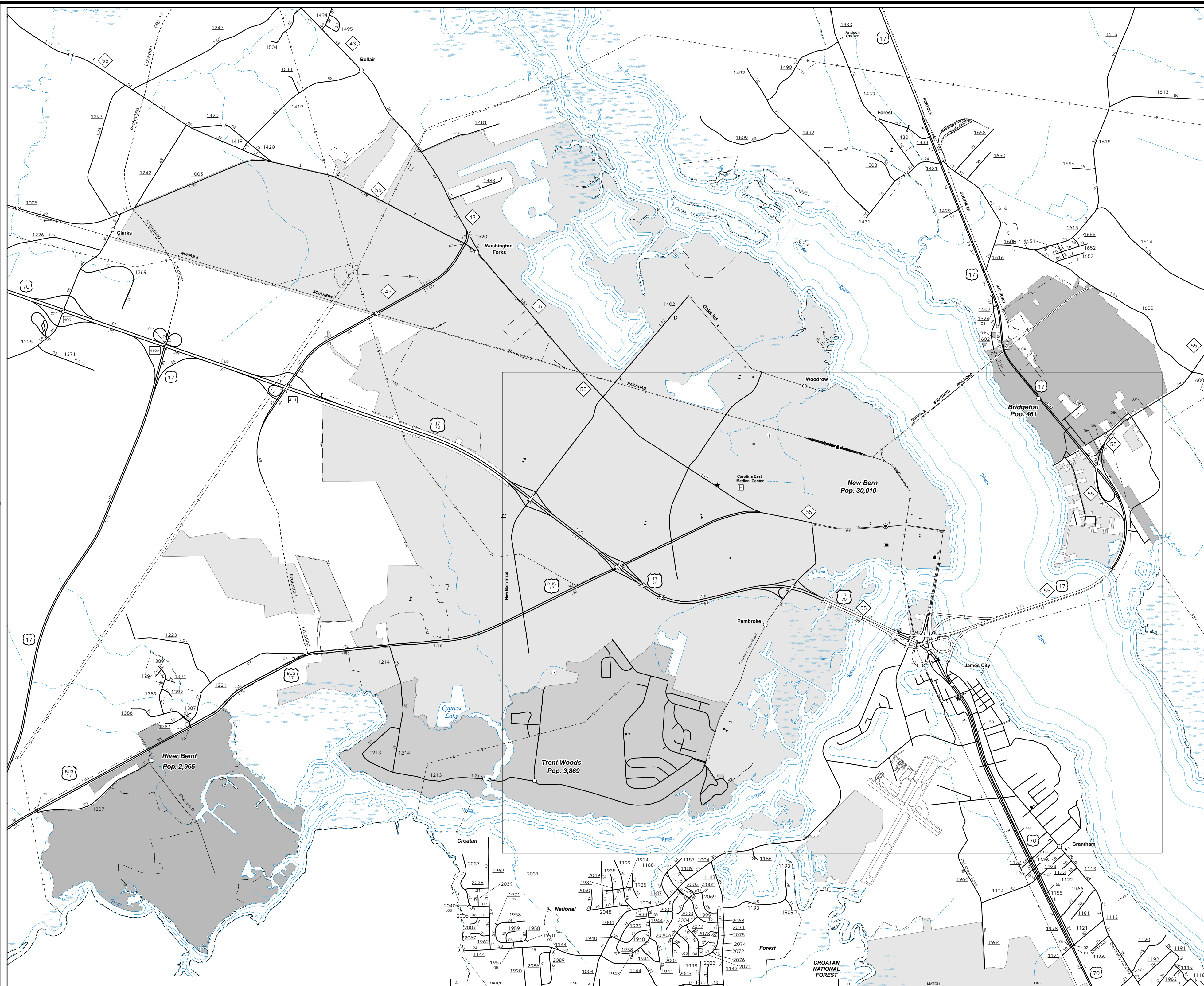


The Mapping Section's goal is to provide the most accurate and current information possible. Map data is compiled from numerous sources with varying degrees of accuracy. It is not intended to be used for navigation or as a substitute for official survey data. The accuracy of the information is not guaranteed. For additional information, visit <http://www.ncdot.gov/travel/infomapping/> and click on Data Providers or contact us by phone at (919) 835-8480.

COPIES OF THIS MAP ARE AVAILABLE
FOR PURCHASE AT A
REPUBLICAN NOMINAL COST.
ADDRESS: N.C. DEPARTMENT OF TRANSPORTATION
MSAU - MAPPING SECTION
4809 BERT RD.
RAVENNA, NC 27853



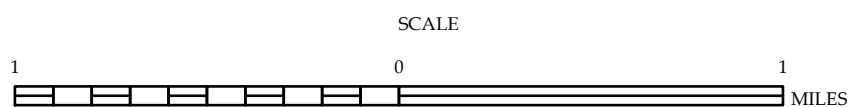
Vanceboro
Cove City



ENLARGED MUNICIPAL AND SUBURBAN AREAS

CRAVEN COUNTY NORTH CAROLINA

PREPARED BY THE
NORTH CAROLINA DEPARTMENT OF TRANSPORTATION
OPERATIONS PROGRAM MANAGEMENT UNIT - MAPPING SECTION
IN COOPERATION WITH THE
U.S. DEPARTMENT OF TRANSPORTATION
FEDERAL HIGHWAY ADMINISTRATION



10,000 FOOT GRID BASED ON NORTH CAROLINA PLANE COORDINATE SYSTEM
LAMBERT CONFORMAL CONIC PROJECTION

SHEET 2 OF 4