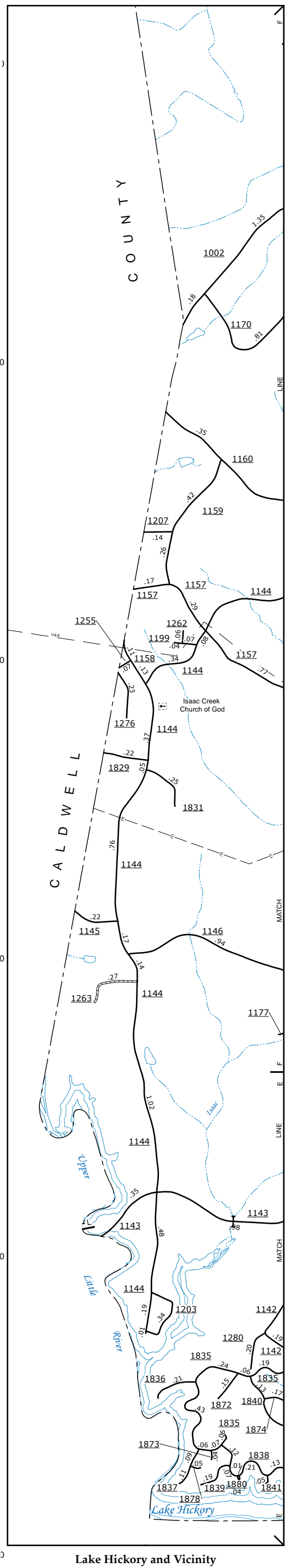
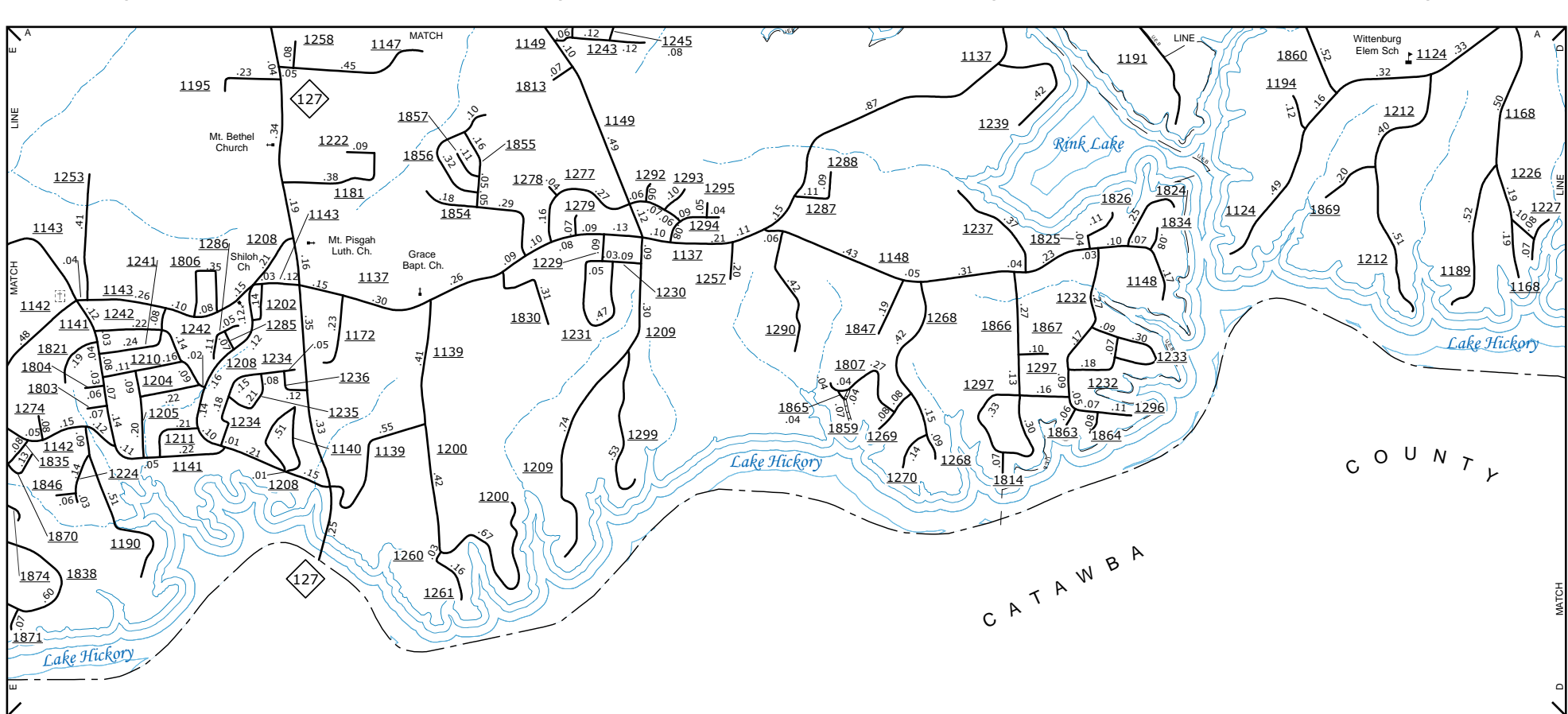


The Mapping Section's goal is to provide the most accurate and current information possible. Map data is compiled from numerous sources and is subject to change. The map is not intended to be used as a legal document. The information shown on this map was last updated in July 2021. For additional information, visit <http://www.ncdot.gov/data/dataportal> and click on Data Providers or contact us by phone at (919) 855-4460.

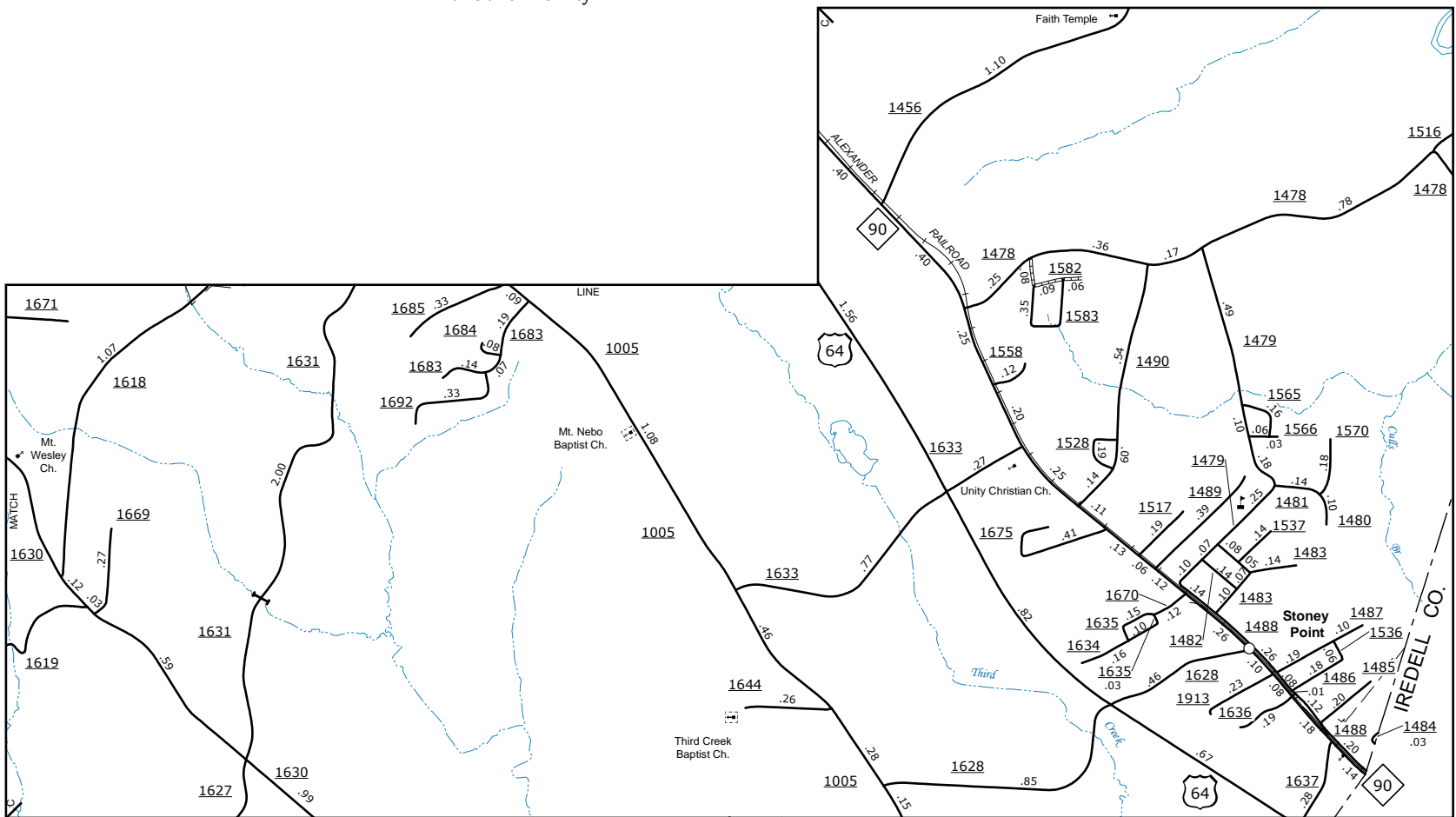
COPIES OF THIS MAP ARE AVAILABLE
FOR PURCHASE AT A REPRODUCIBLE COST.
N.C. DEPARTMENT OF TRANSPORTATION
ADDRESS: 4809 BERT RD.
RALEIGH, NC 27606



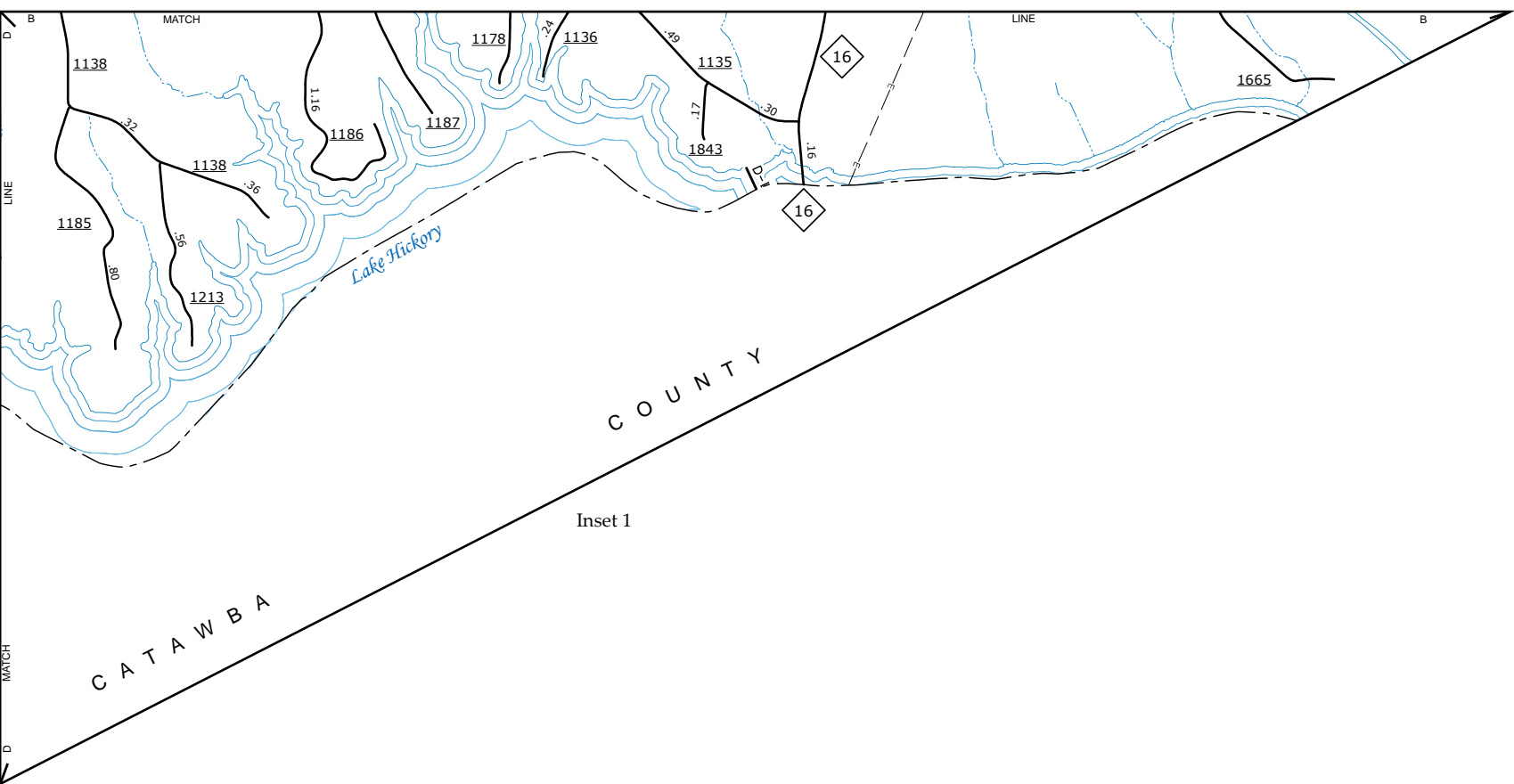
Lake Hickory and Vicinity



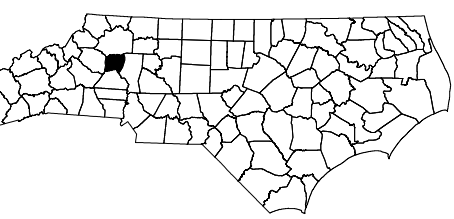
Rink Lake and Vicinity



Stony Point



Inset 1



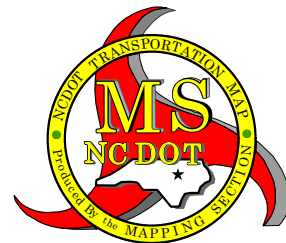
1:250,000

1:300,000

1:300,000

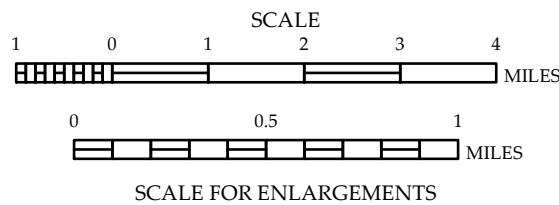
1:300,000

1:400,000



ALEXANDER COUNTY NORTH CAROLINA

PREPARED BY THE
NORTH CAROLINA DEPARTMENT OF TRANSPORTATION
OPERATIONS PROGRAM MANAGEMENT UNIT - MAPPING SECTION
IN COOPERATION WITH THE
U.S. DEPARTMENT OF TRANSPORTATION
FEDERAL HIGHWAY ADMINISTRATION



10,000 FOOT GRID BASED ON NORTH CAROLINA PLANE COORDINATE SYSTEM
LAMBERT CONFORMAL CONIC PROJECTION