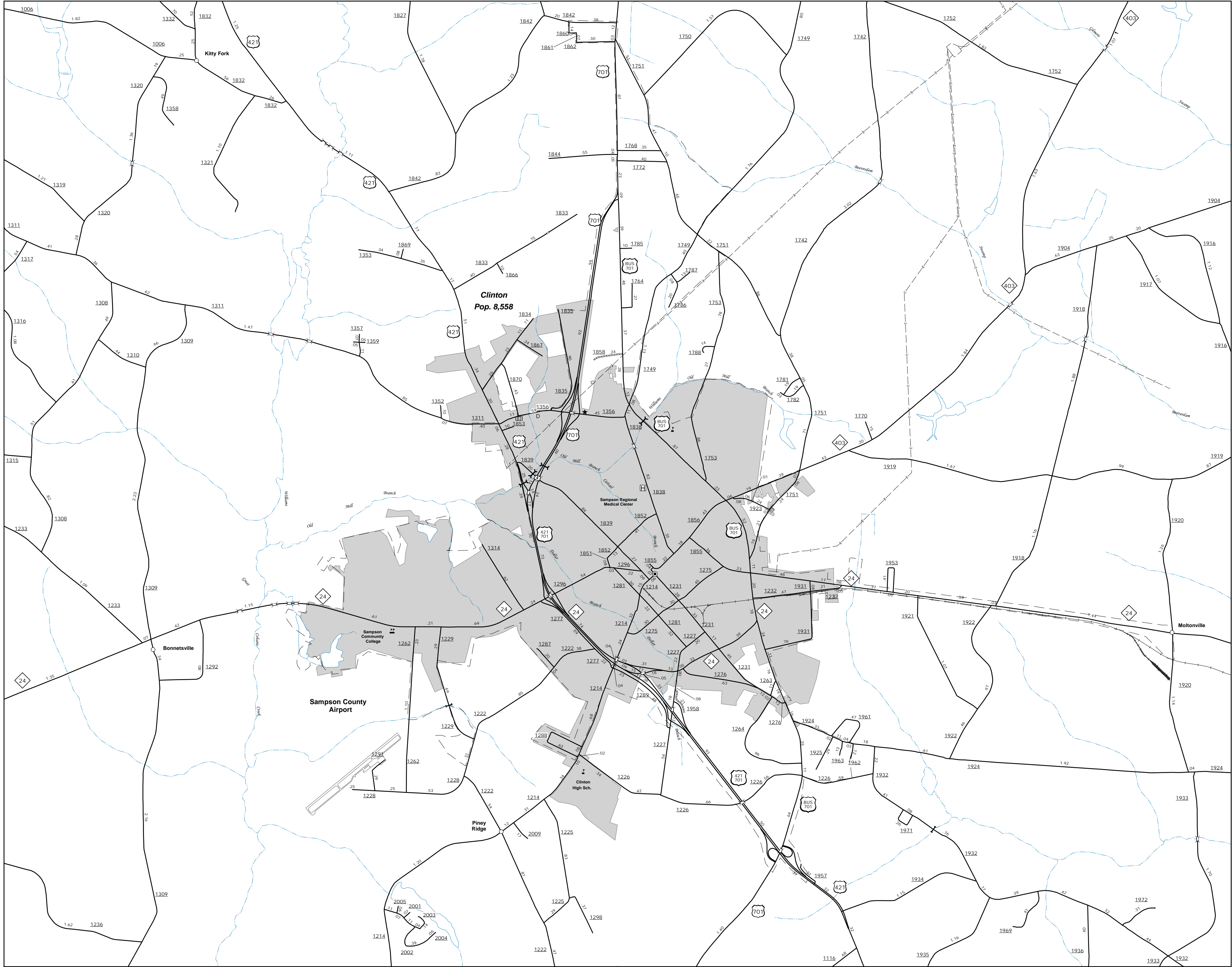
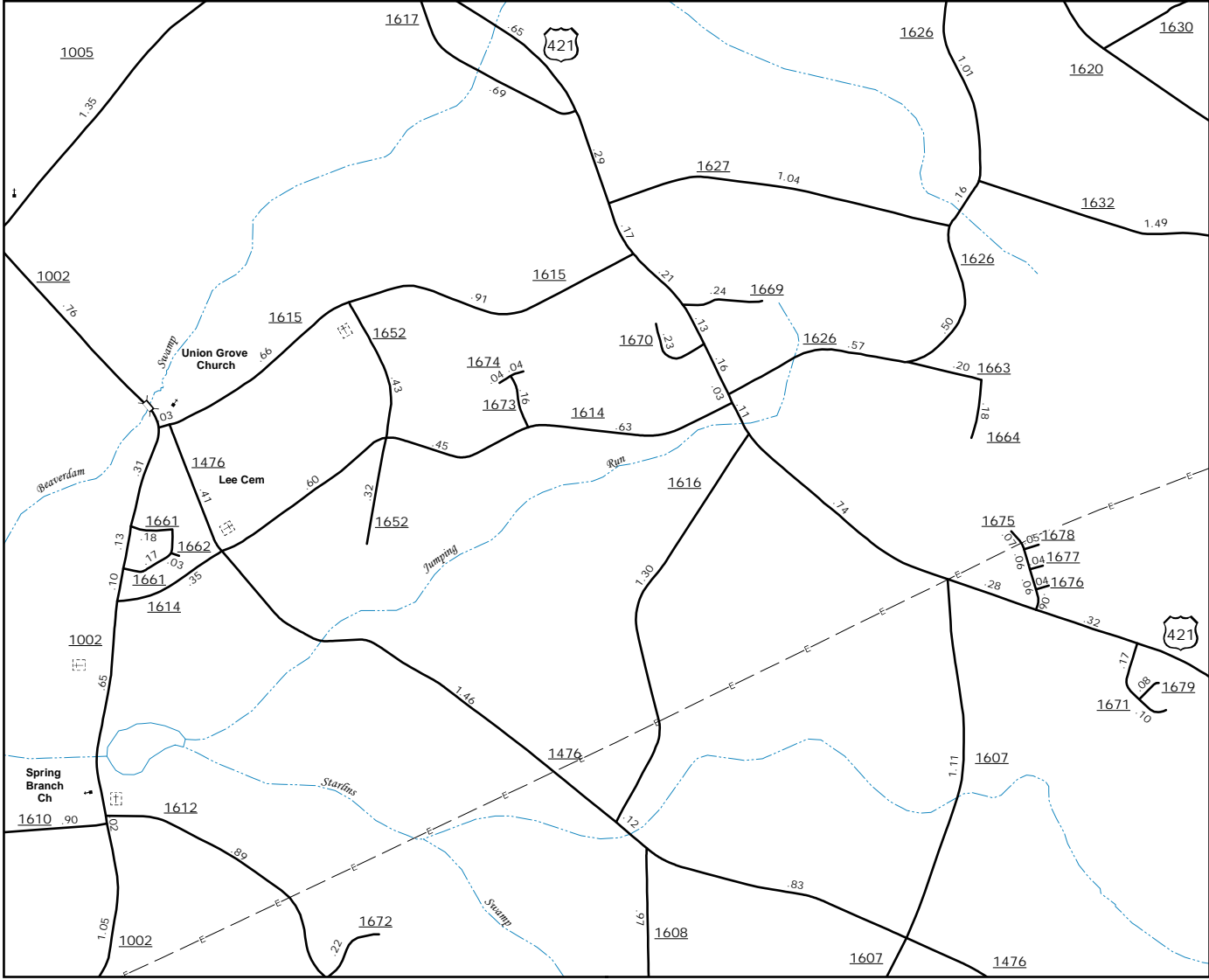


The Mapping Section's goal is to provide the most accurate and current information possible. Map data is compiled from numerous sources and is subject to change. The Mapping Section makes every effort to ensure the accuracy of the information presented. However, the Mapping Section does not warrant the accuracy of the information presented. The Mapping Section is not responsible for any errors or omissions. For additional information, visit <http://www.ncdot.gov/transportation/mapping> and click on Data Providers or contact us by phone at (919) 835-8480.

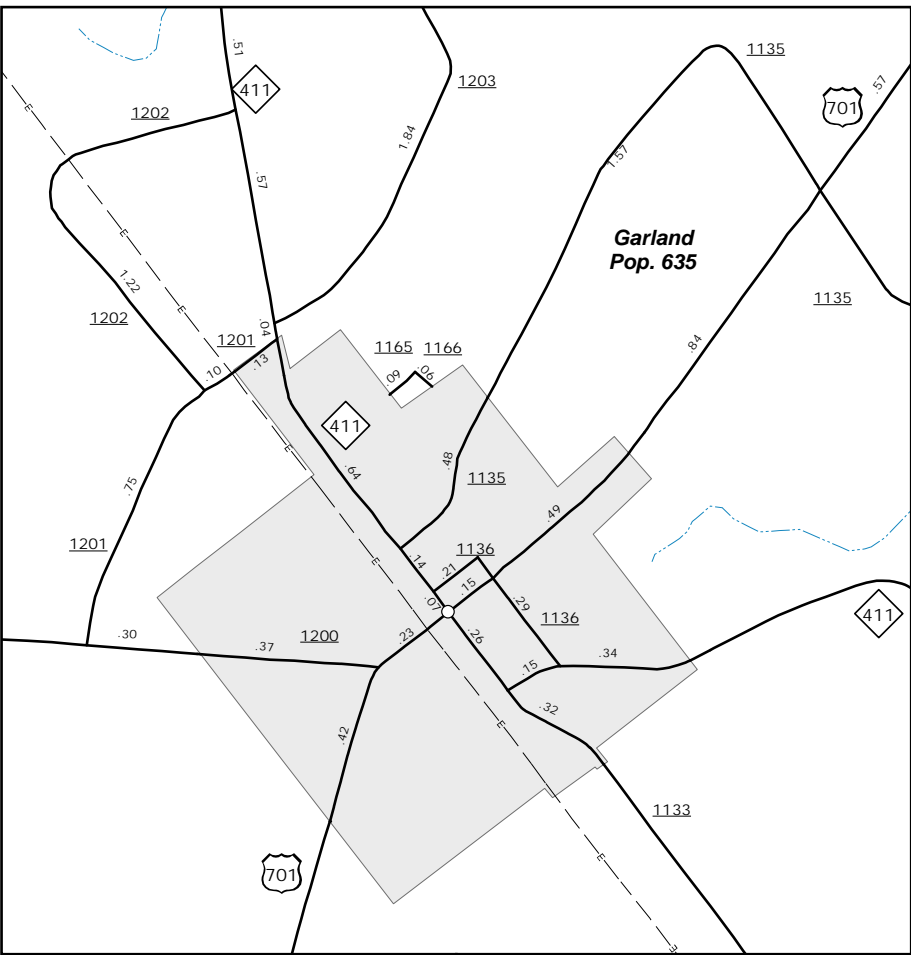
COPIES OF THIS MAP ARE AVAILABLE
FOR PURCHASE AT A NOMINAL COST.
ADDRESS: NORTH CAROLINA DEPARTMENT OF TRANSPORTATION
MAPPING SECTION
4809 BERTHOUD ROAD
RALEIGH, NC 27606



Clinton



Lee's Chapel Area



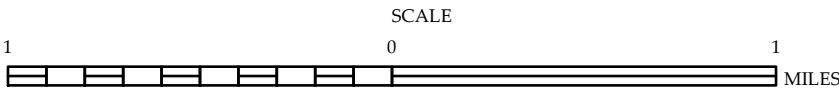
Garland



ENLARGED MUNICIPAL AND SUBURBAN AREAS

SAMPSON COUNTY NORTH CAROLINA

PREPARED BY THE
NORTH CAROLINA DEPARTMENT OF TRANSPORTATION
MANAGEMENT SYSTEMS AND ASSESSMENT UNIT - MAPPING SECTION
IN COOPERATION WITH THE
U.S. DEPARTMENT OF TRANSPORTATION
FEDERAL HIGHWAY ADMINISTRATION



10,000 FOOT GRID BASED ON NORTH CAROLINA PLANE COORDINATE SYSTEM
LAMBERT CONFORMAL CONIC PROJECTION

SHEET 2 OF 3