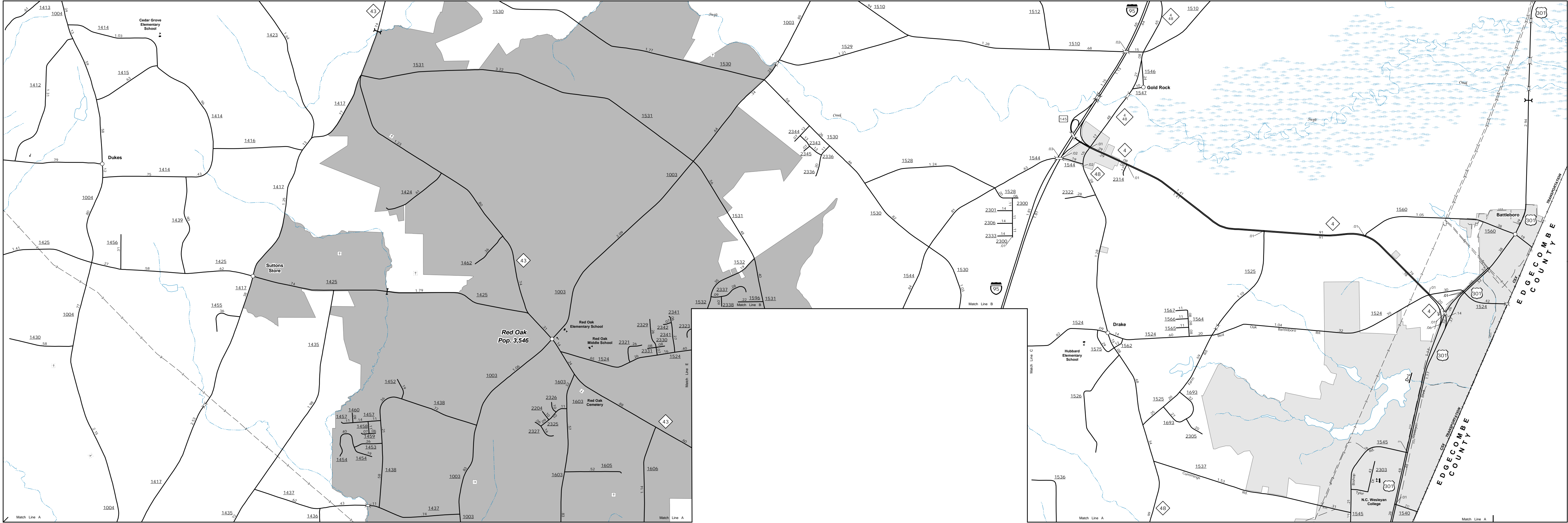


The Mapping Section's goal is to provide the most accurate and current information possible. Map data is compiled from numerous sources and is subject to change. The accuracy of the map is not guaranteed. The accuracy of the map is not guaranteed. The accuracy of the map is not guaranteed. For additional information, visit <http://www.ncdot.gov/TravelInformation> and click on Data Providers or contact us by phone at (919) 855-8490.

COPIES OF THIS MAP ARE AVAILABLE
FOR PURCHASE AT A PUBLIC NOMINAL COST.
ADDRESS:
N.C. DEPARTMENT OF TRANSPORTATION
MSAU - MAPPING SECTION
4809 BERNI RD.
RALEIGH, NC 27606



Red Oak

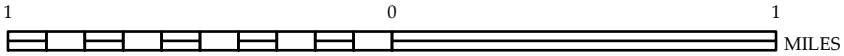


ENLARGED MUNICIPAL AND SUBURBAN AREAS

NASH COUNTY NORTH CAROLINA

PREPARED BY THE
NORTH CAROLINA DEPARTMENT OF TRANSPORTATION
OPERATIONS PROGRAM MANAGEMENT UNIT - MAPPING SECTION
IN COOPERATION WITH THE
U.S. DEPARTMENT OF TRANSPORTATION
FEDERAL HIGHWAY ADMINISTRATION

SCALE



10,000 FOOT GRID BASED ON NORTH CAROLINA PLANE COORDINATE SYSTEM
LAMBERT CONFORMAL CONIC PROJECTION

SHEET 2 OF 4