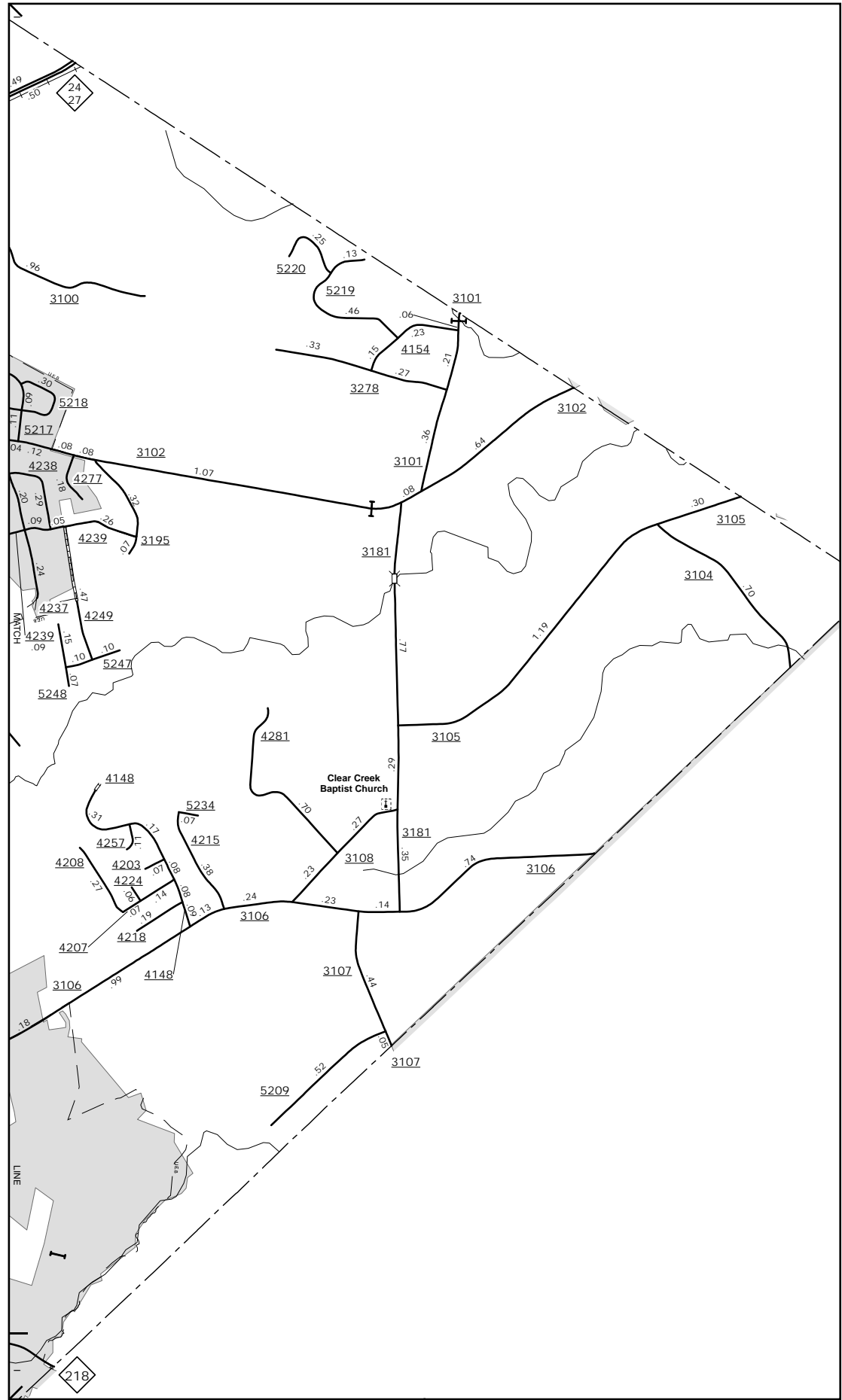
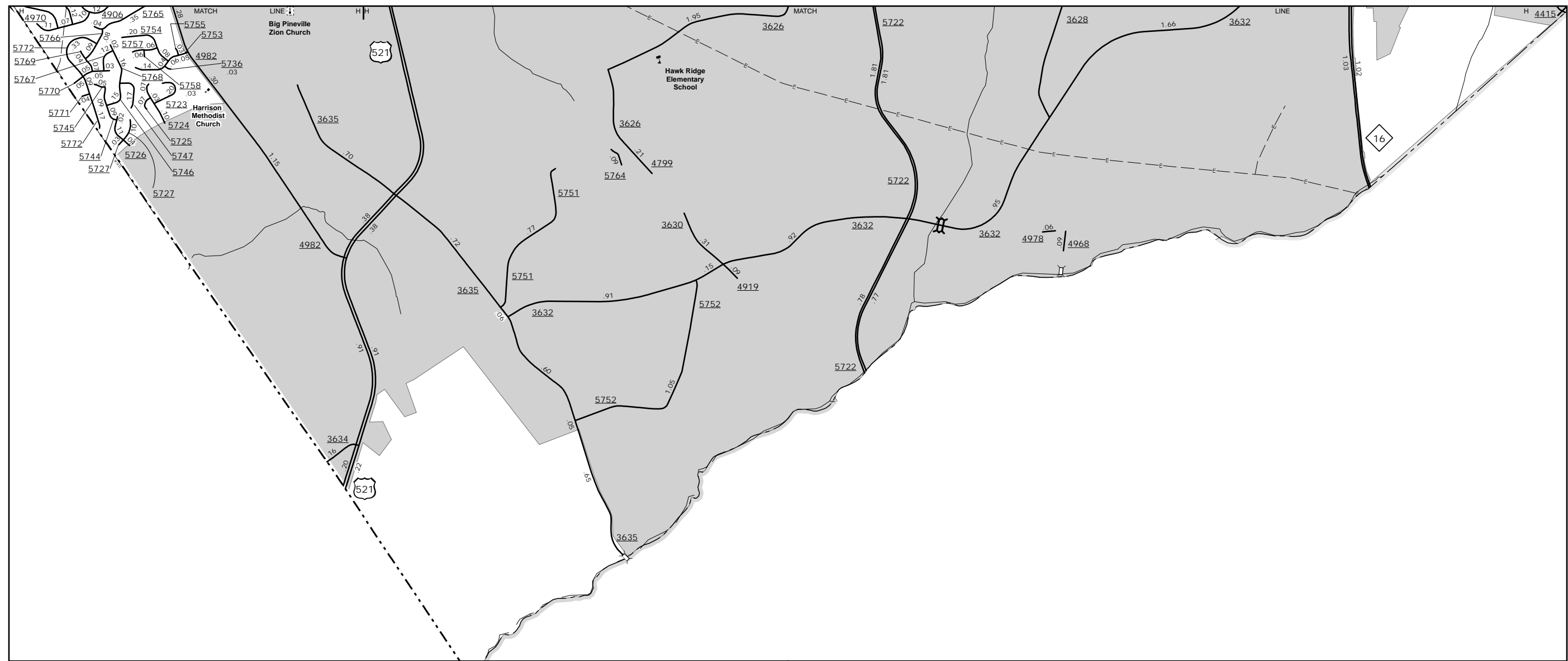
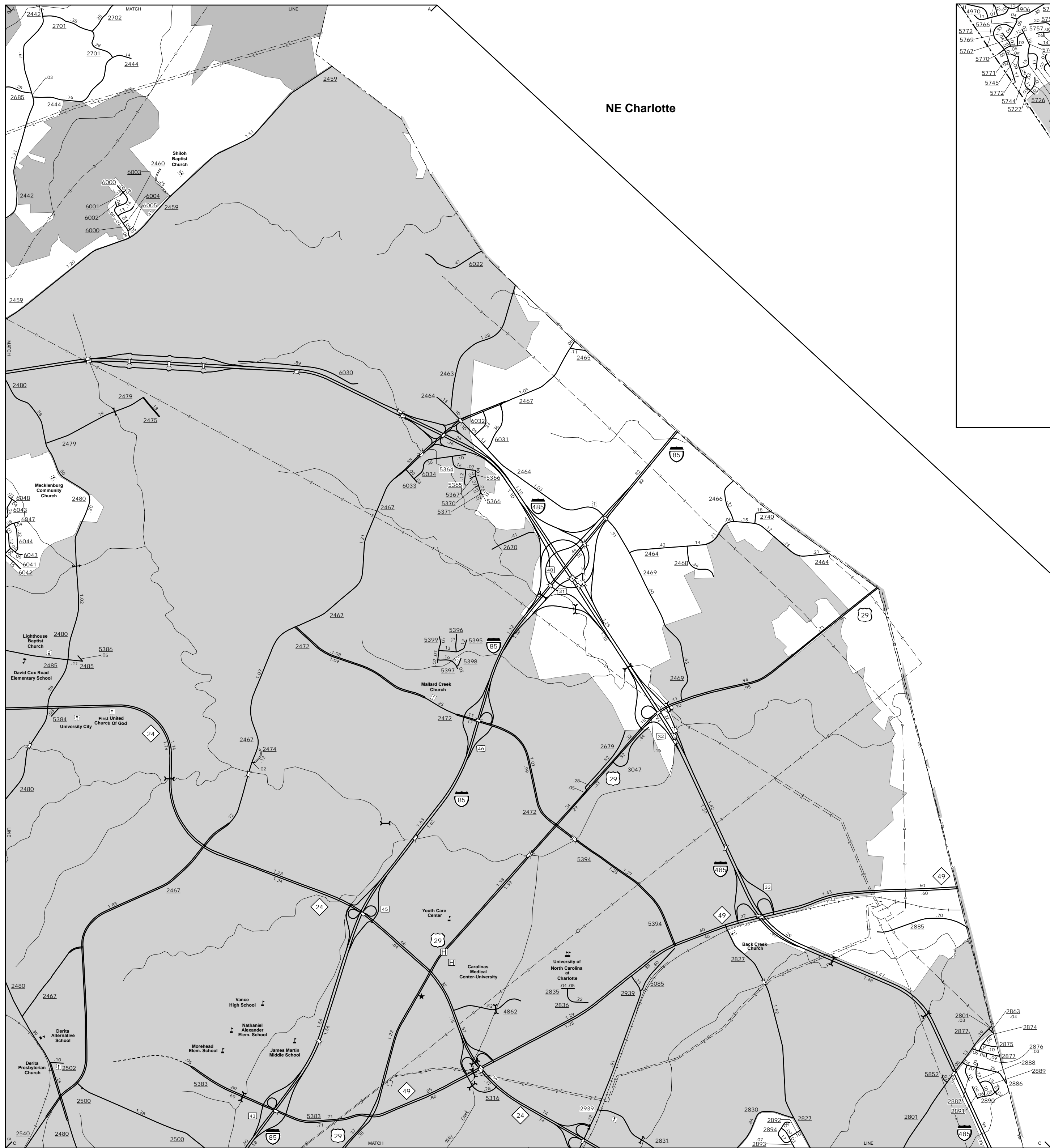


The Mapping Section's goal is to provide the most accurate and current information possible. Map data is compiled from numerous sources and is subject to change. The mapping section is not responsible for any inaccuracies or omissions. The mapping section is not responsible for any damages or liabilities arising from the use of this map. For additional information, visit <http://www.ncdot.gov/transportation/mapping> and click on Data Providers or contact us by phone at (719) 835-8480.

COPIES OF THIS MAP ARE AVAILABLE
FOR PURCHASE AT A NOMINAL COST.
N.C. DEPARTMENT OF TRANSPORTATION
ADDRESS: 4809 BERNI, RD.
MSAU - MAPPING SECTION
CHARLOTTE, NC 28209

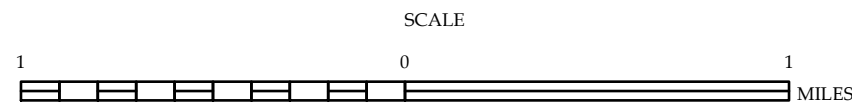


East Mecklenburg



ENLARGED MUNICIPAL AND SUBURBAN AREAS MECKLENBURG COUNTY NORTH CAROLINA

PREPARED BY THE
NORTH CAROLINA DEPARTMENT OF TRANSPORTATION
MANAGEMENT SYSTEMS AND ASSESSMENTS UNIT - MAPPING SECTION
IN COOPERATION WITH THE
U.S. DEPARTMENT OF TRANSPORTATION
FEDERAL HIGHWAY ADMINISTRATION



10,000 FOOT GRID BASED ON NORTH CAROLINA PLANE COORDINATE SYSTEM
LAMBERT CONFORMAL CONIC PROJECTION