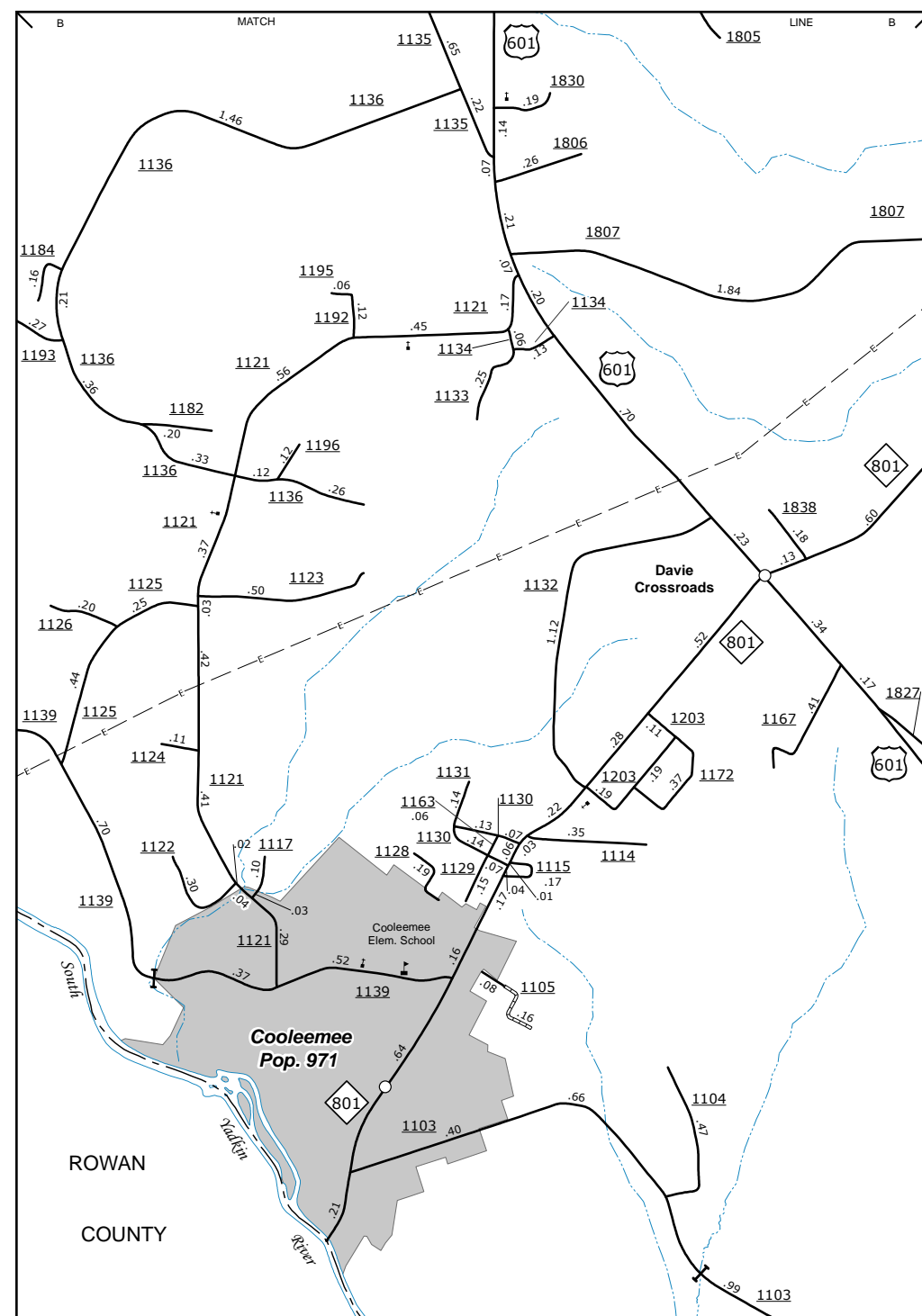
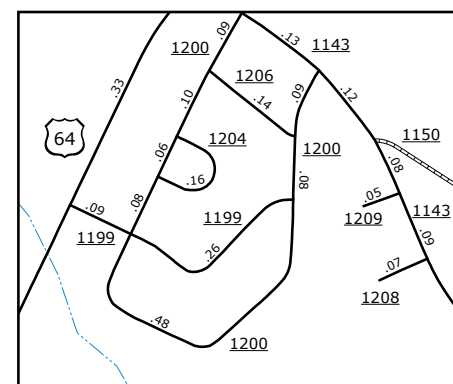


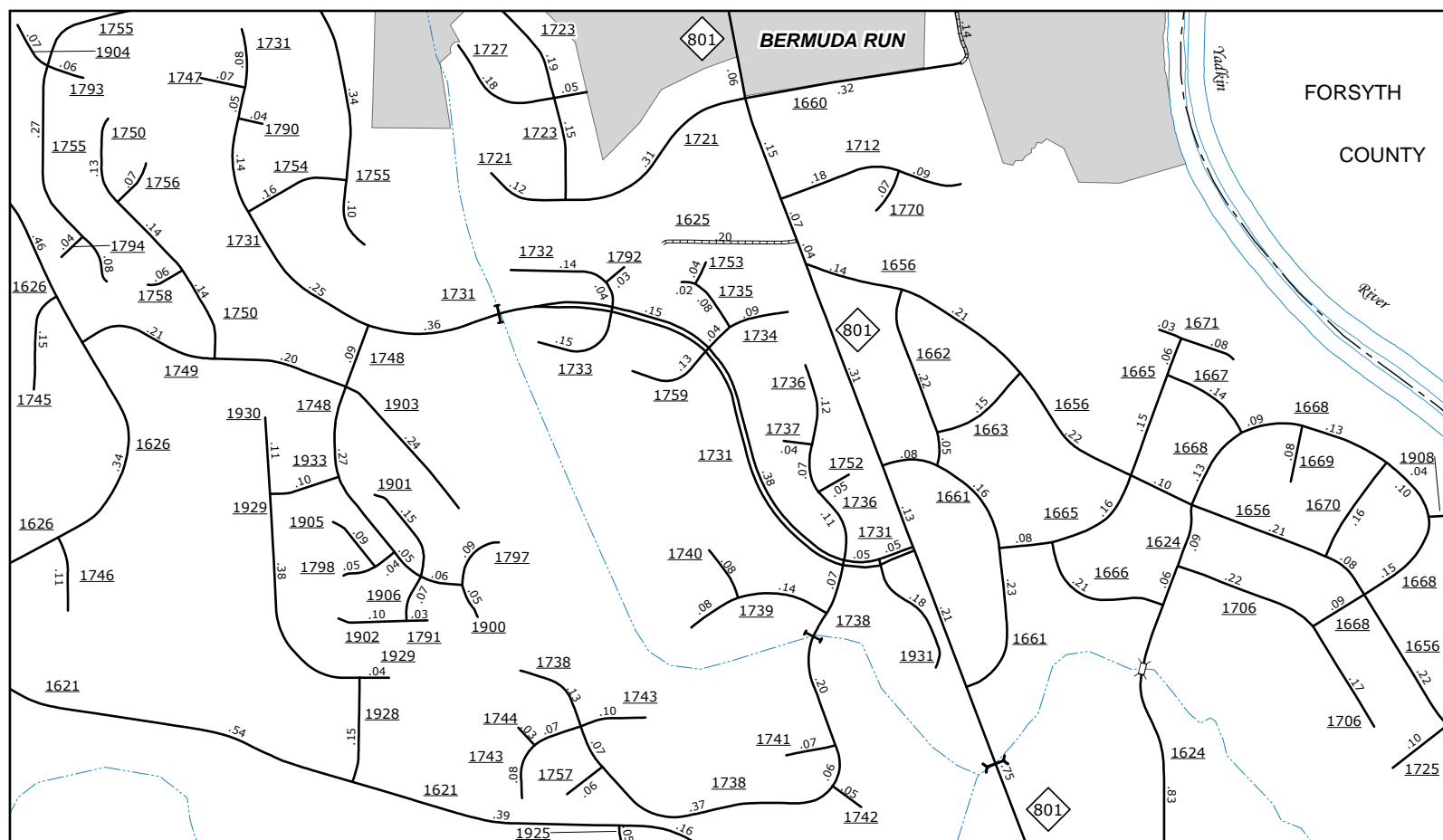
Fork Church



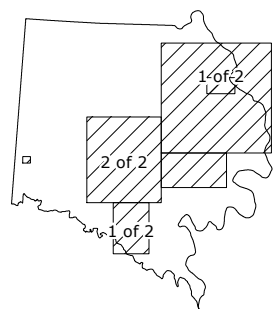
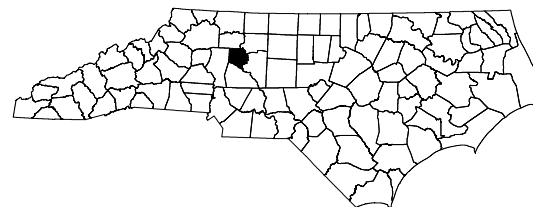
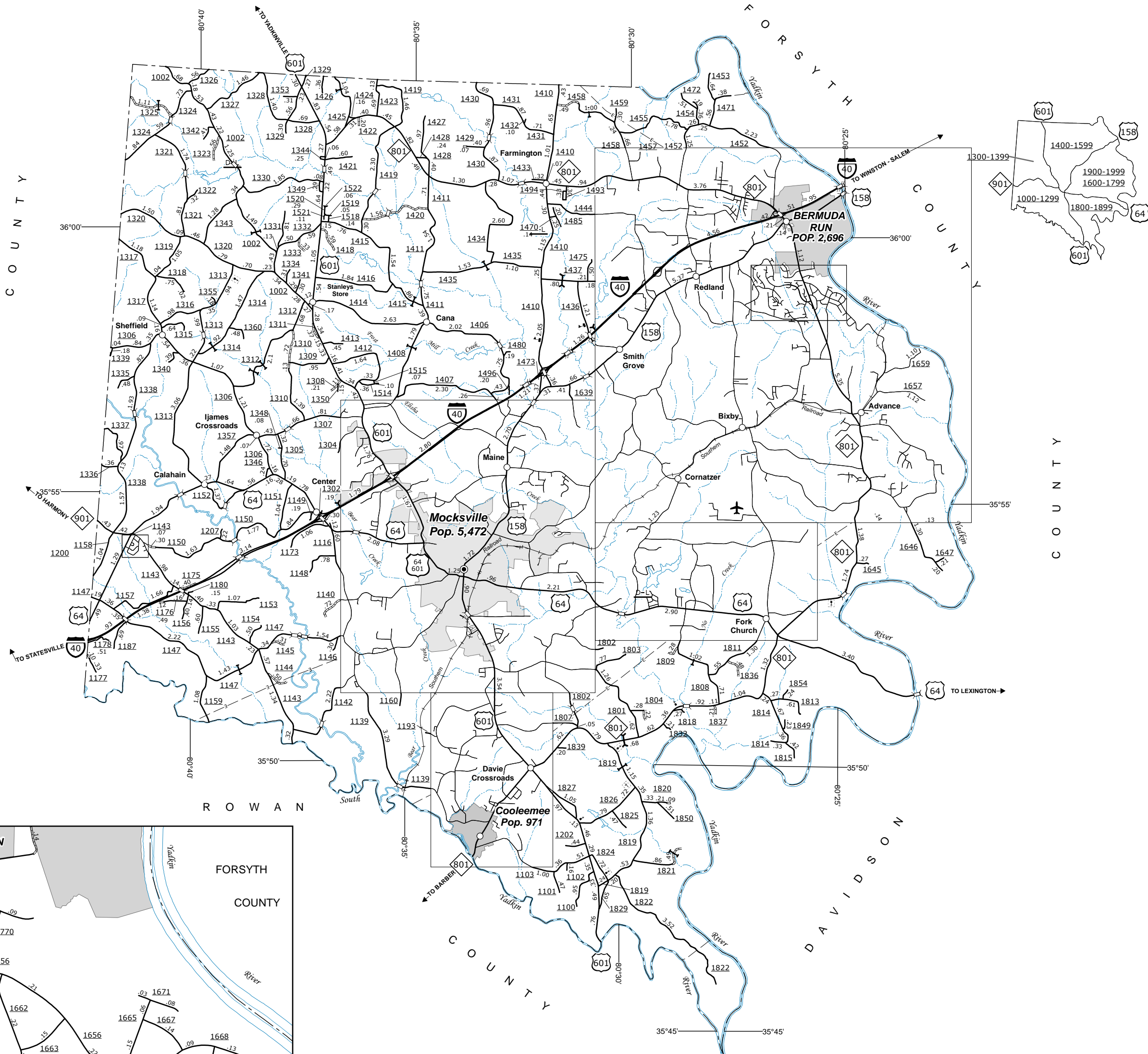
Cooleemee



Oakland Heights

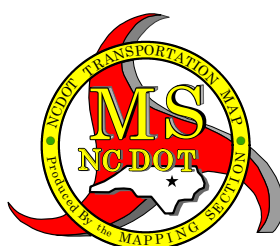


Inset 1



- LEGEND**

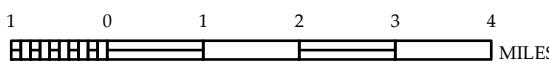
	UNPAVED SURFACED ROAD
	HARD SURFACED ROAD
	NON-SYSTEM ROADS
	DIVIDED HIGHWAY W/ FRONTAGE ROAD
	PROJECTED LOCATION
	INTERSECTION DISTANCE
	TRAFFIC CIRCLE
	DETAILED HIGHWAY INTERCHANGE
	HIGHWAY BRIDGE
	RAILROAD BRIDGE
	DRAW SPAN ON BRIDGE
	PEDESTRIAN BRIDGE
	PEDESTRIAN WALKWAY
	PEDESTRIAN UNDERPASS
	VEHICULAR UNDERPASS
	FORD
	TUNNEL
	CULVERT
	PIPE
	INTERSTATE HIGHWAY
	U.S. NUMBERED HIGHWAY
	N.C. NUMBERED HIGHWAY
	U.S. NUMBERED BYCYCLE ROUTE
	N.C. NUMBERED BICYCLE ROUTE
	INTERSTATE INTERCHANGE NUMBER
	SECONDARY ROAD NUMBER
	UTILITY LINES
	RAILROAD
	RAILROAD STATION
	GRADE CROSSING
	INSET AREA
	NATIONAL FOREST BOUNDARY
	RESERVATION OR PARK BOUNDARY
	STATE FOREST BOUNDARY
	STATE GAMELAND BOUNDARY
	FEDERAL GAMELAND BOUNDARY
	MILITARY RESERVATION BOUNDARY
	STATE LINE
	COUNTY LINE
	CITY LIMIT
	FERRY ROUTE
	NARROW CREEK OR STREAM
	WIDE RIVER OR CREEK
	RESERVOIR, POND OR LAKE W/ ISLAND
	DAM OR DAM WITH LOCK
	WATERFALL
	SWAMP
	COMMUNITY, TOWN OR CITY CENTER
	COUNTY SEAT
	STATE CAPITAL
	SCHOOL
	COLLEGE OR UNIVERSITY
	HOSPITAL
	COAST OR BEACH STATION
	CHURCH
	CHURCH WITH CEMETERY
	CEMETERY
	PATROL STATION
	CORRECTION OR PENAL INSTITUTION
	MINE OR PIT
	HIGHWAY GARAGE OR MAINT. YARD
	HIGHWAY DIV. OR DIST. OFFICE
	MILITARY POST
	WILDLIFE REFUGE
	WEIGH STATION
	FAIRGROUNDS
	HISTORICAL SITE
	POINTS OF INTEREST
	STATE FOREST
	LIGHTHOUSE
	MOUNTAIN SUMMIT
	OVERLOOK
	GEODETIC MARKER
	REST AREA
	VISITOR CTR./REST AREA
	WELCOME CTR./REST AREA
	MAJOR AIRPORT
	AIRPORT
	MILITARY AIRPORT
	HELIPPOINT



DAVIE COUNTY
NORTH CAROLINA

PREPARED BY THE
NORTH CAROLINA DEPARTMENT OF TRANSPORTATION
MANAGEMENT SYSTEMS AND ASSESSMENTS UNIT - MAPPING SECTION
IN COOPERATION WITH THE
U.S. DEPARTMENT OF TRANSPORTATION
FEDERAL HIGHWAY ADMINISTRATION

SCALE



10,000 FOOT GRID BASED ON NORTH CAROLINA PLANE COORDINATE SYSTEM
LAMBERT CONFORMAL CONIC PROJECTION