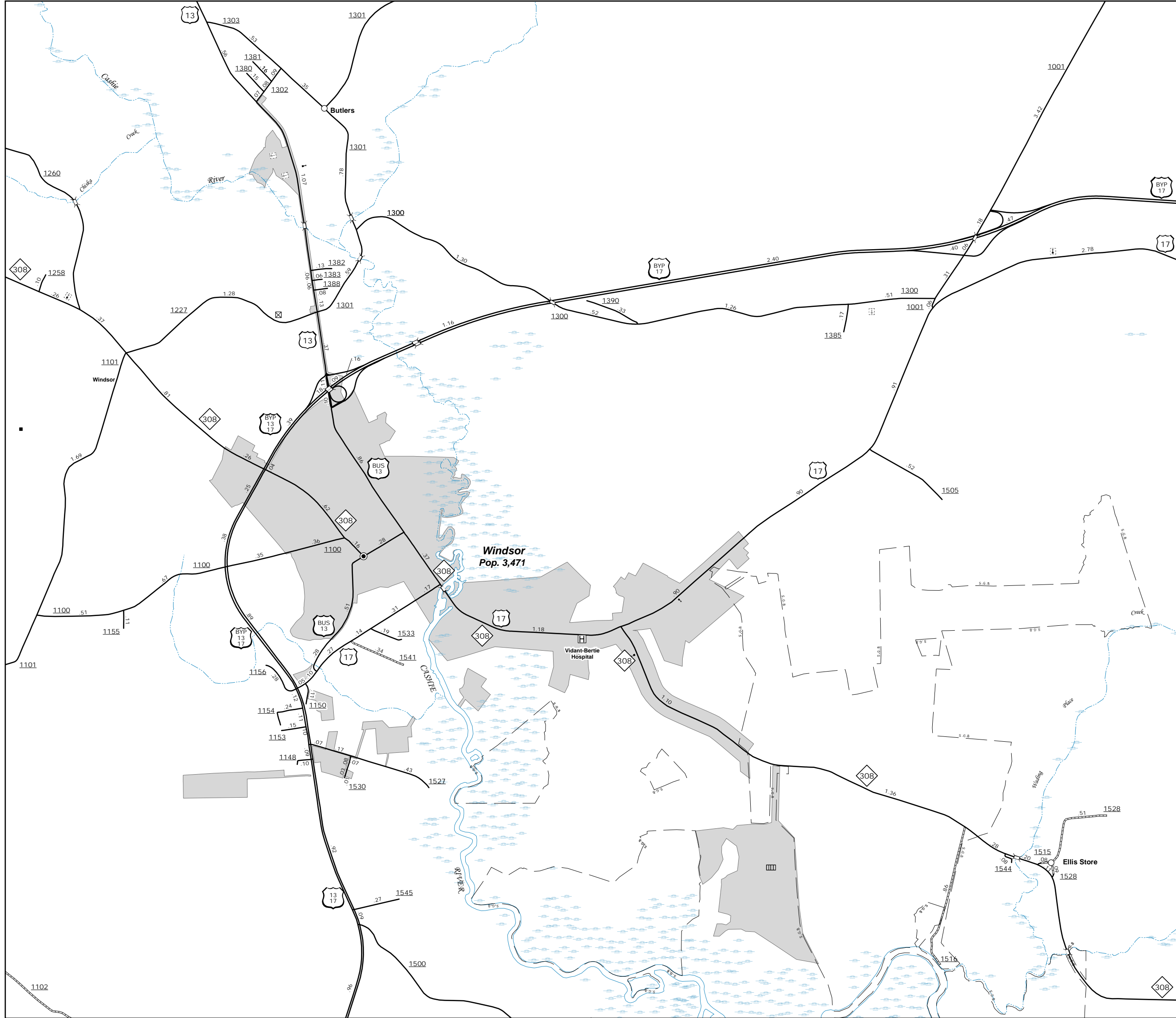
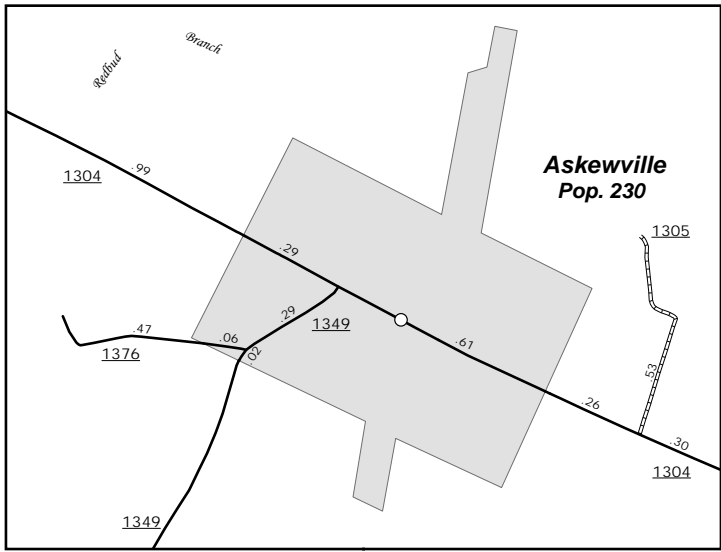


The Mapping Section's goal is to provide the most accurate and current information possible. Map data is compiled from numerous sources including aerial photography, ground surveys, and other data. While every effort is made to ensure the accuracy of the information shown on this map, the Department of Transportation does not warrant the accuracy of the information shown on this map. For additional information, visit <http://www.ncdot.gov/transportation> and click on Data Providers or contact us by phone at (919) 835-4480.

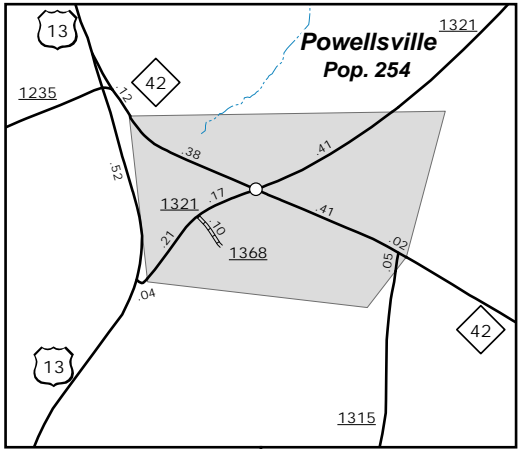
COPIES OF THIS MAP ARE AVAILABLE
FOR PURCHASE AT A
REPUBLICAN NOMINAL COST.
ADDRESS: NORTH CAROLINA
N.C. DEPARTMENT OF TRANSPORTATION
SMAU - MAPPING SECTION
4809 BERTIE RD.
RAVENNA, NC 27958



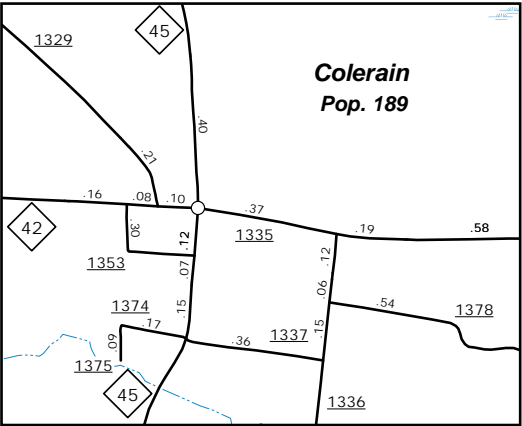
WINDSOR



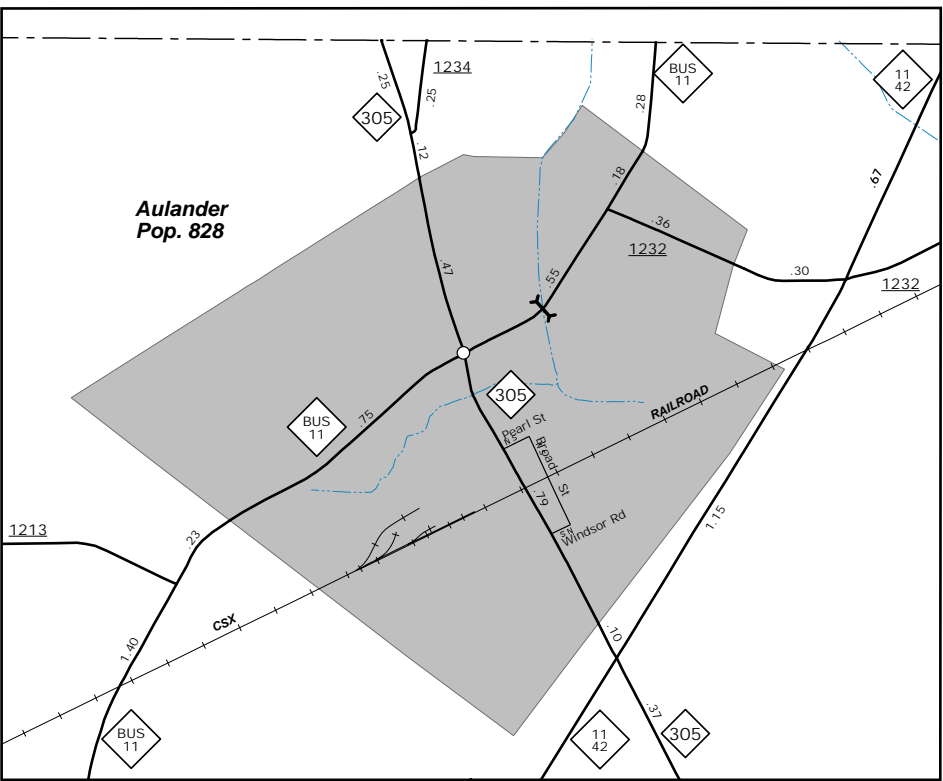
Askewville



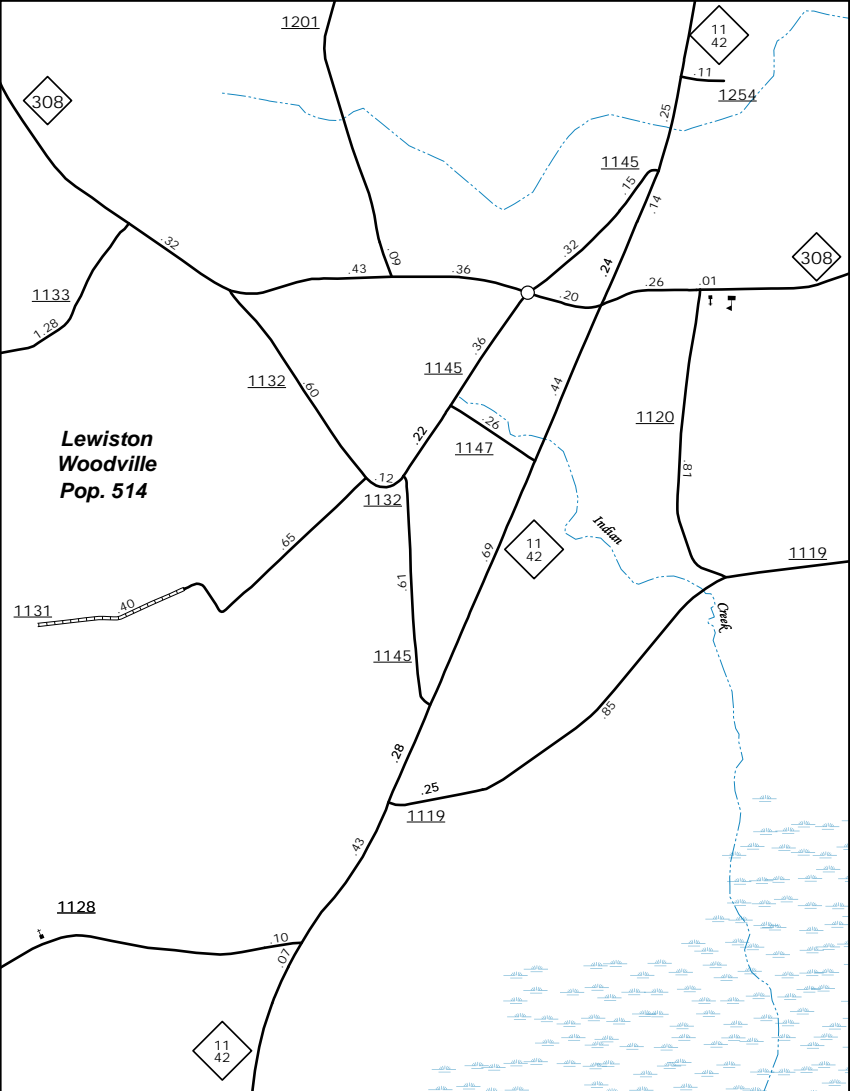
Powellville



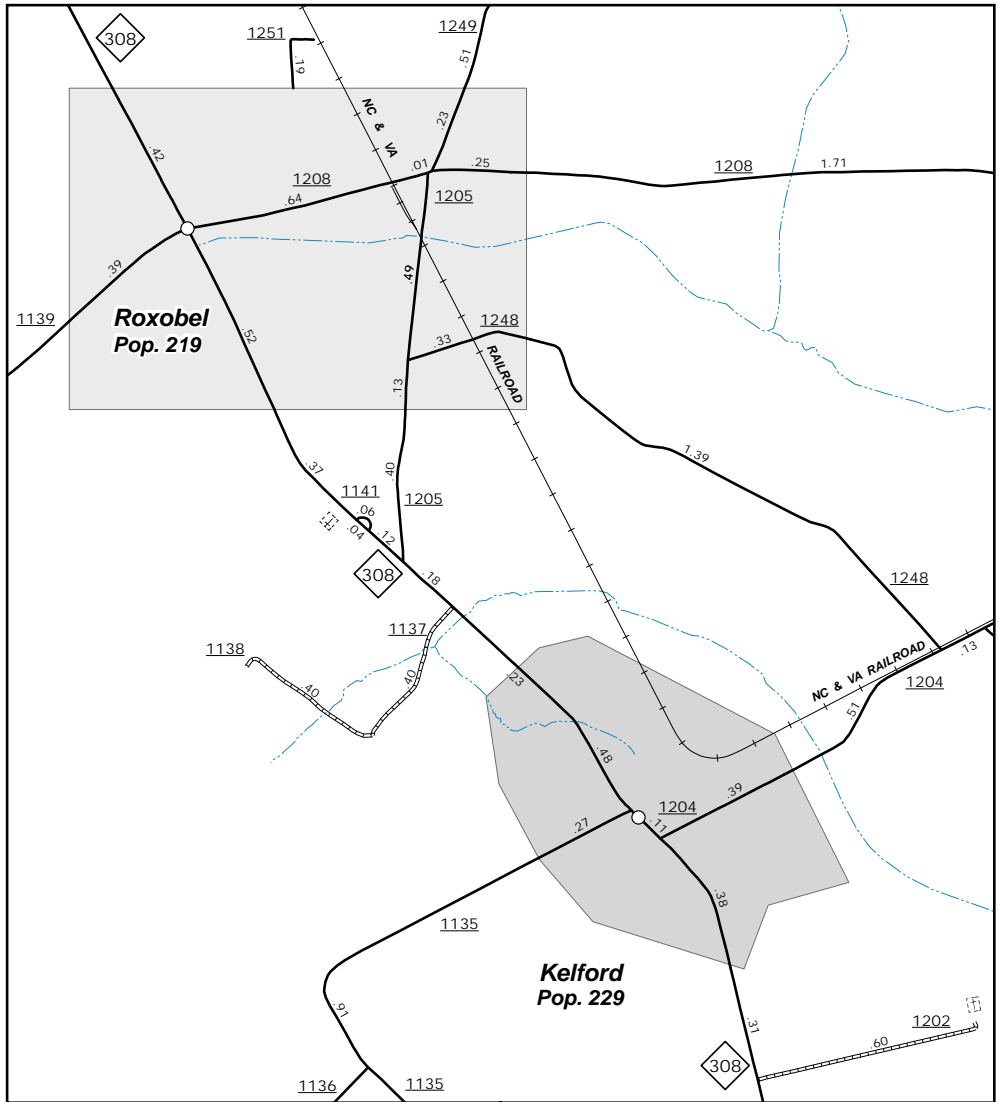
Colerain



Aulander



Lewiston Woodville



Roxobel and Kelford

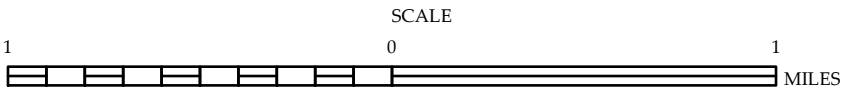


Text

ENLARGED MUNICIPAL AND SUBURBAN AREAS

BERTIE COUNTY NORTH CAROLINA

PREPARED BY THE
NORTH CAROLINA DEPARTMENT OF TRANSPORTATION
OPERATIONS PROGRAM MANAGEMENT UNIT - MAPPING SECTION
IN COOPERATION WITH THE
U.S. DEPARTMENT OF TRANSPORTATION
FEDERAL HIGHWAY ADMINISTRATION



10,000 FOOT GRID BASED ON NORTH CAROLINA PLANE COORDINATE SYSTEM
LAMBERT CONFORMAL CONIC PROJECTION