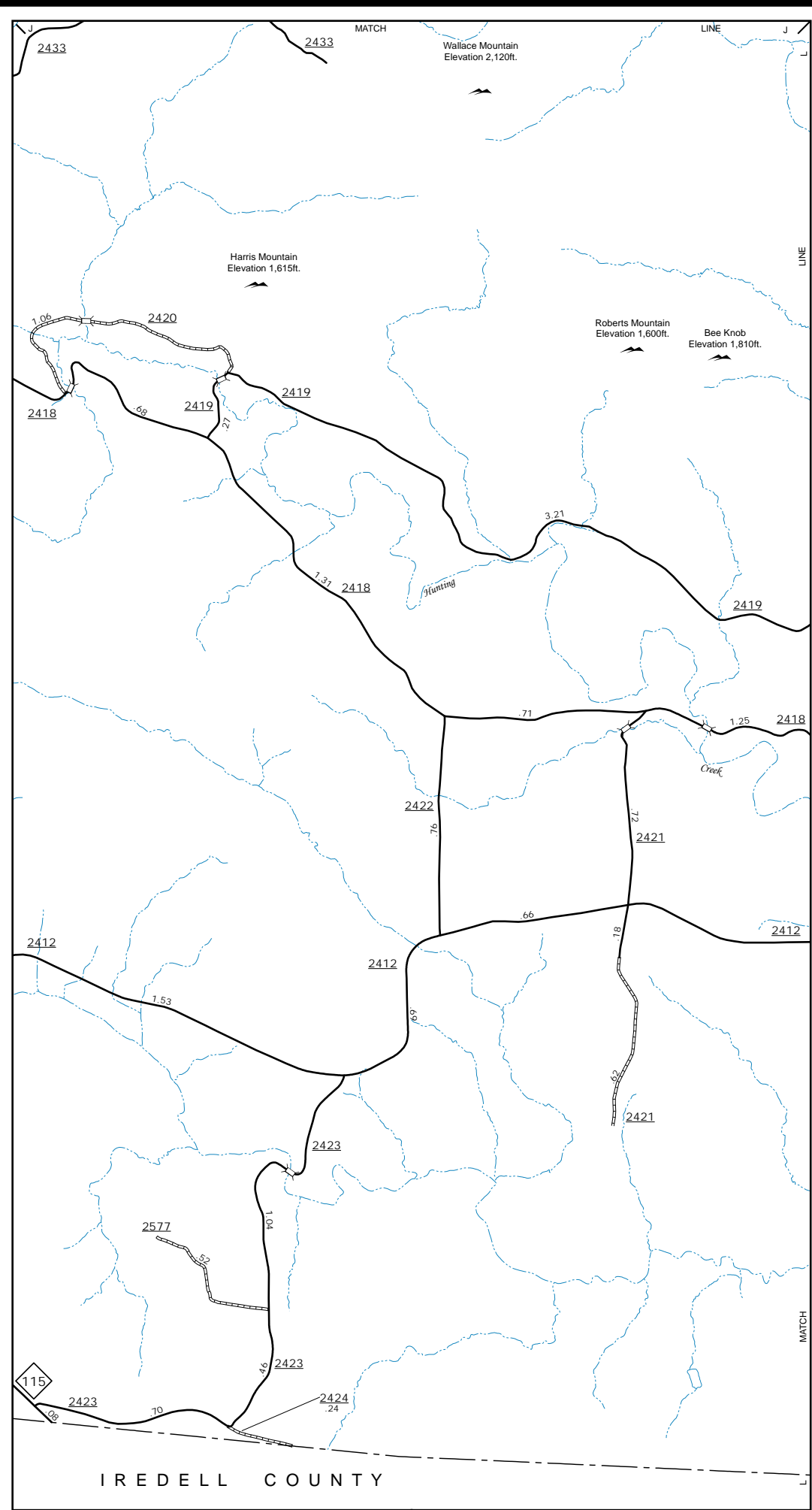


The Mapping Section's goal is to provide the most accurate and current information possible. Map data is compiled from numerous sources with varying bases of information. The map is not a legal document and the accuracy of the information is not guaranteed. The map is for informational purposes only. For additional information, visit <http://www.ncdot.gov/transportation/mau-mapping-section> and click on Data Providers or contact us by phone at (919) 835-8480.

COPIES OF THIS MAP ARE AVAILABLE
FOR A PUBLIC INFORMATION COST
ADDRESS: N.C. DEPARTMENT OF TRANSPORTATION
MAU - MAPPING SECTION
4899 BERNY LN
RALEIGH, NC 27609



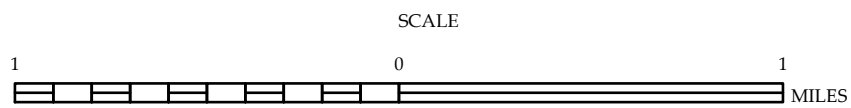
Inset 1

Rhonda and Vicinity

ENLARGED MUNICIPAL AND SUBURBAN AREAS

WILKES COUNTY NORTH CAROLINA

PREPARED BY THE
NORTH CAROLINA DEPARTMENT OF TRANSPORTATION
MANAGEMENT SYSTEMS AND ASSESSMENTS UNIT - MAPPING SECTION
IN COOPERATION WITH THE
U.S. DEPARTMENT OF TRANSPORTATION
FEDERAL HIGHWAY ADMINISTRATION



10,000 FOOT GRID BASED ON NORTH CAROLINA PLANE COORDINATE SYSTEM
LAMBERT CONFORMAL CONIC PROJECTION