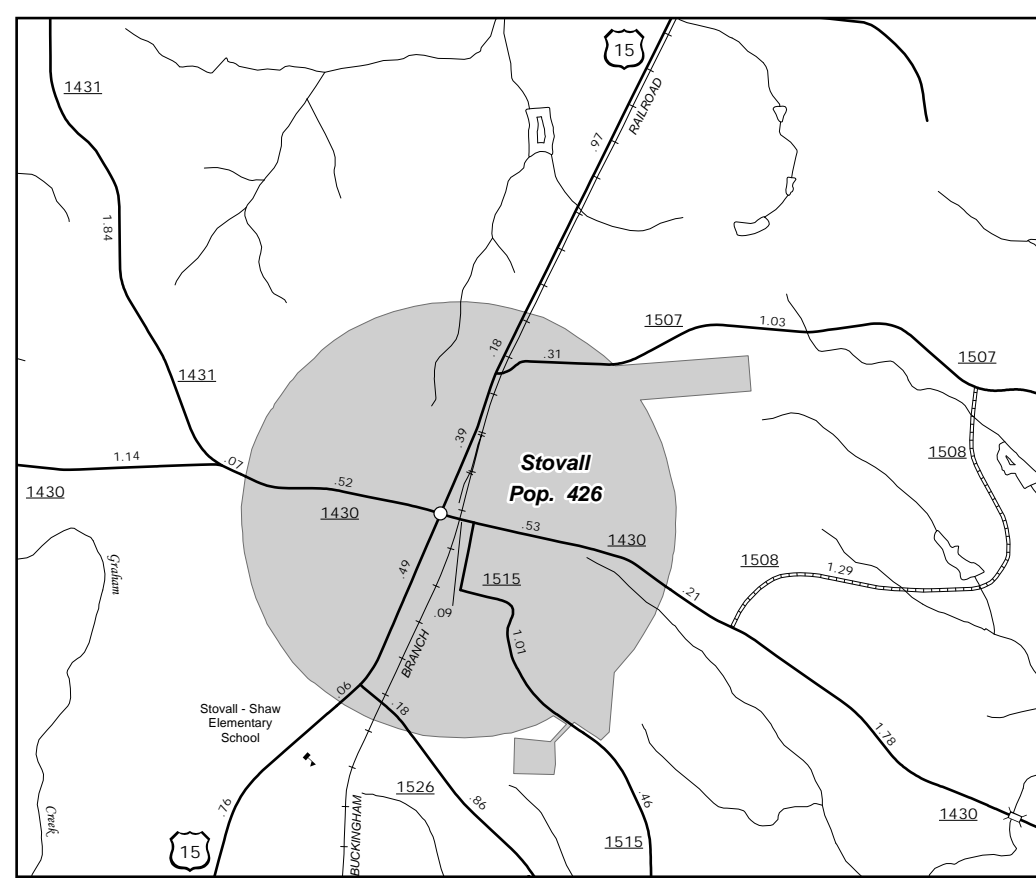
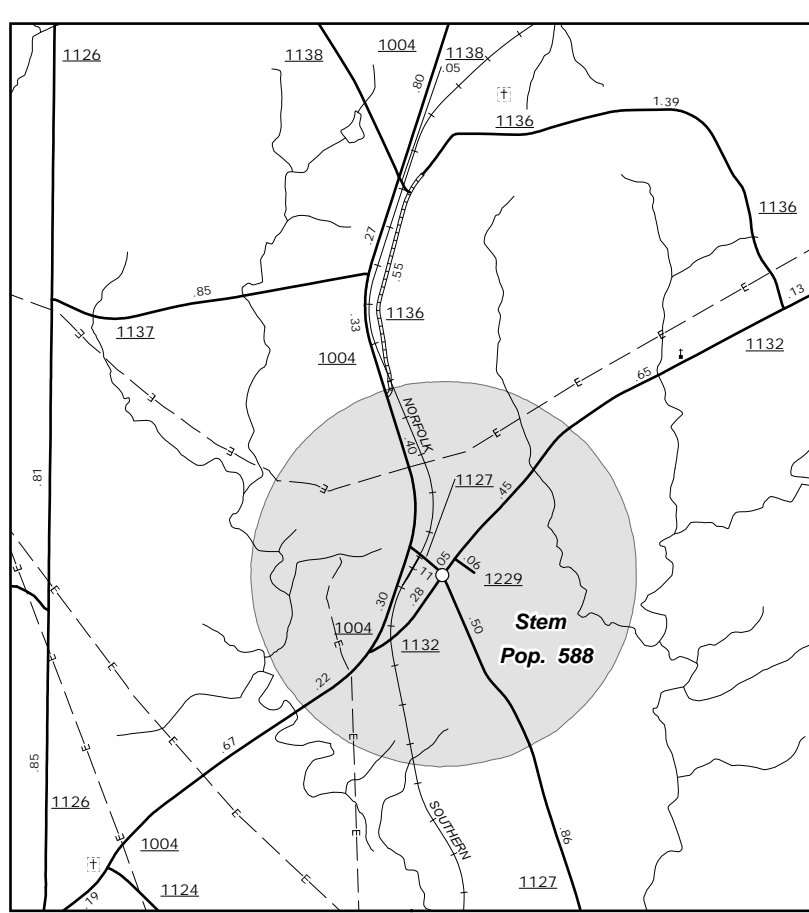


The Mapping Section's goal is to provide the most accurate and current information possible. Map data is compiled from numerous sources with varying bases of information. The map data is not intended to be a substitute for the accuracy of the ground. The map data is not intended to be a substitute for the accuracy of the ground. The map data is not intended to be a substitute for the accuracy of the ground.

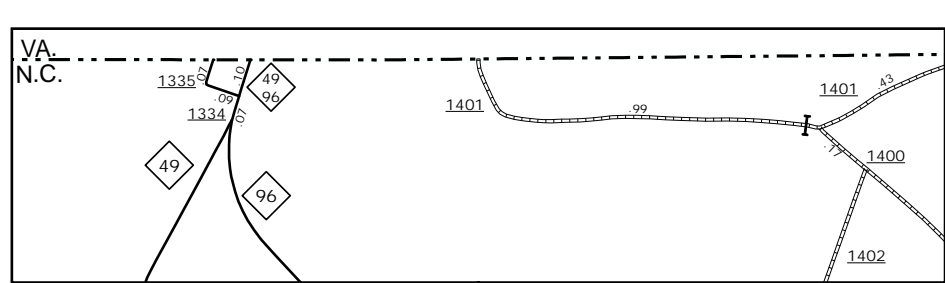
COPIES OF THIS MAP ARE AVAILABLE
FOR PUBLIC AT NOMINAL COST
ADDRESS:
N.C. DEPARTMENT OF TRANSPORTATION
MSAU - MAPPING SECTION
4899 BERT RD.
Raleigh, NC 27609



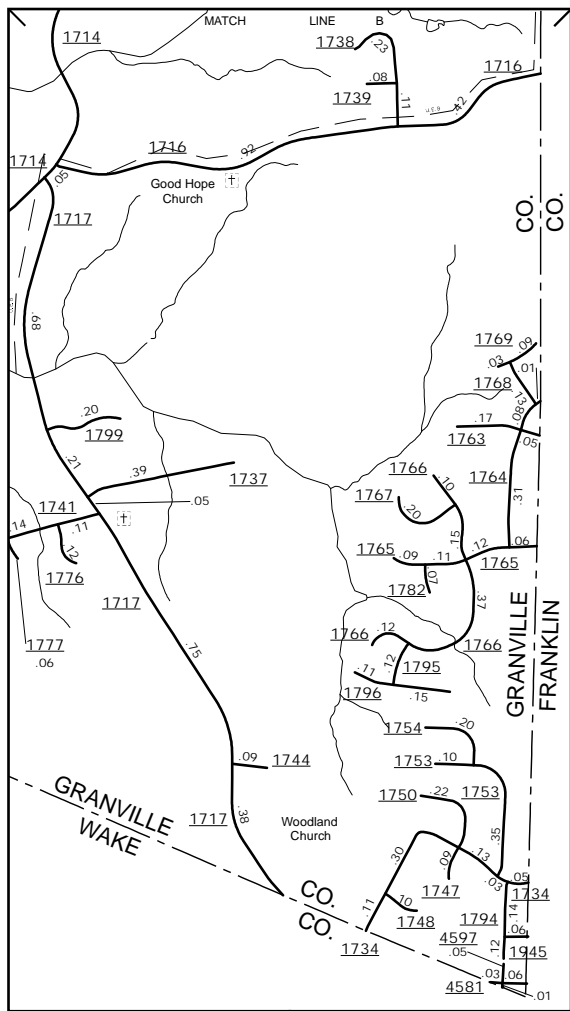
Stovall



Stem



Virginia

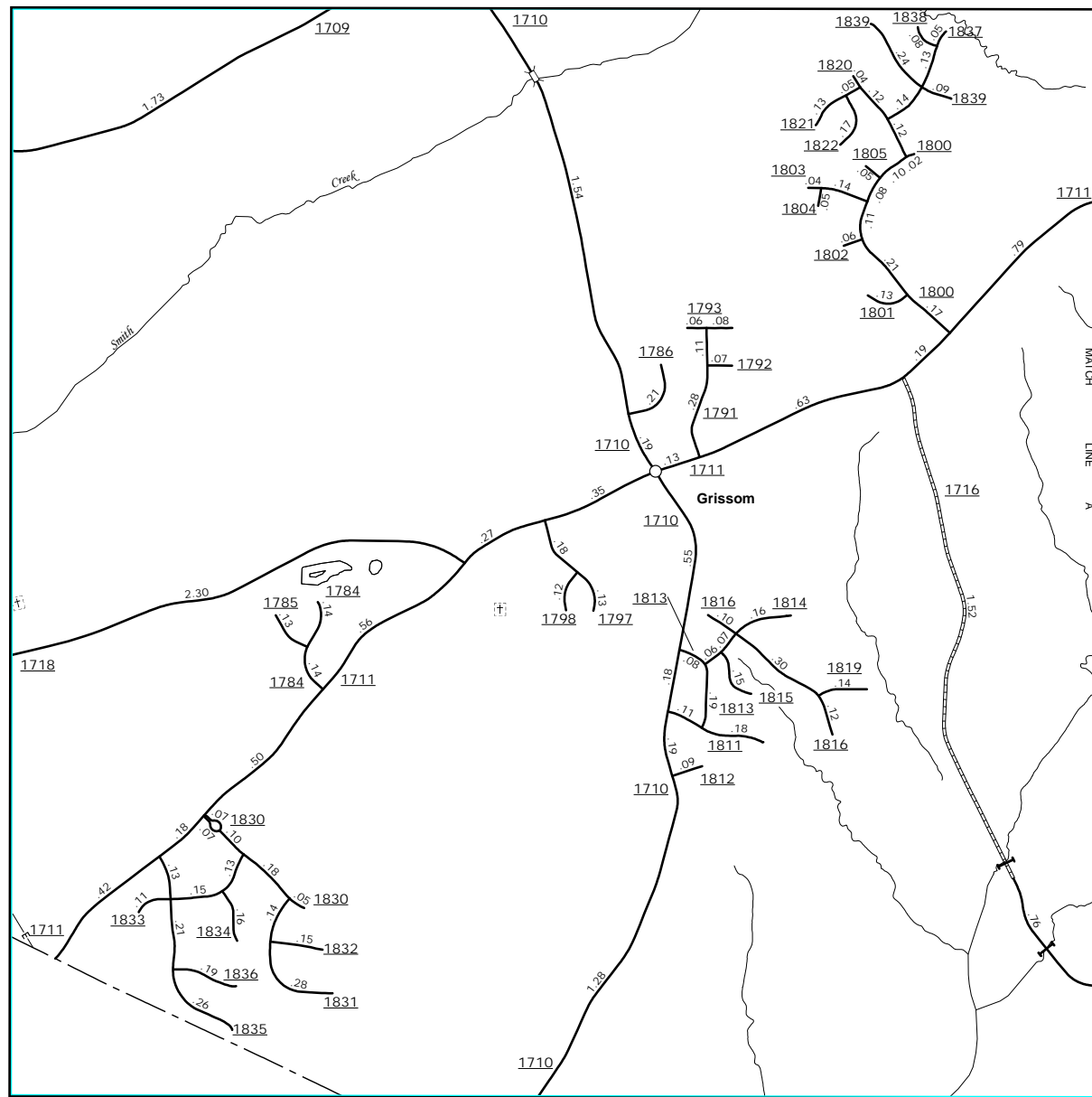


SE Corner

Butner & Creedmoor



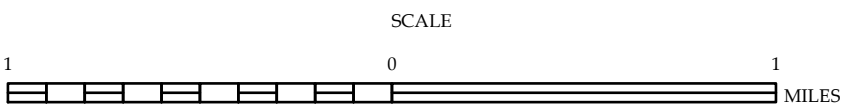
Oxford



Grissom

ENLARGED MUNICIPAL AND SUBURBAN AREAS GRANVILLE COUNTY NORTH CAROLINA

PREPARED BY THE
NORTH CAROLINA DEPARTMENT OF TRANSPORTATION
MANAGEMENT SYSTEMS AND ASSESSMENTS UNIT - MAPPING SECTION
IN COOPERATION WITH THE
U.S. DEPARTMENT OF TRANSPORTATION
FEDERAL HIGHWAY ADMINISTRATION



10,000 FOOT GRID BASED ON NORTH CAROLINA PLANE COORDINATE SYSTEM
LAMBERT CONFORMAL CONIC PROJECTION