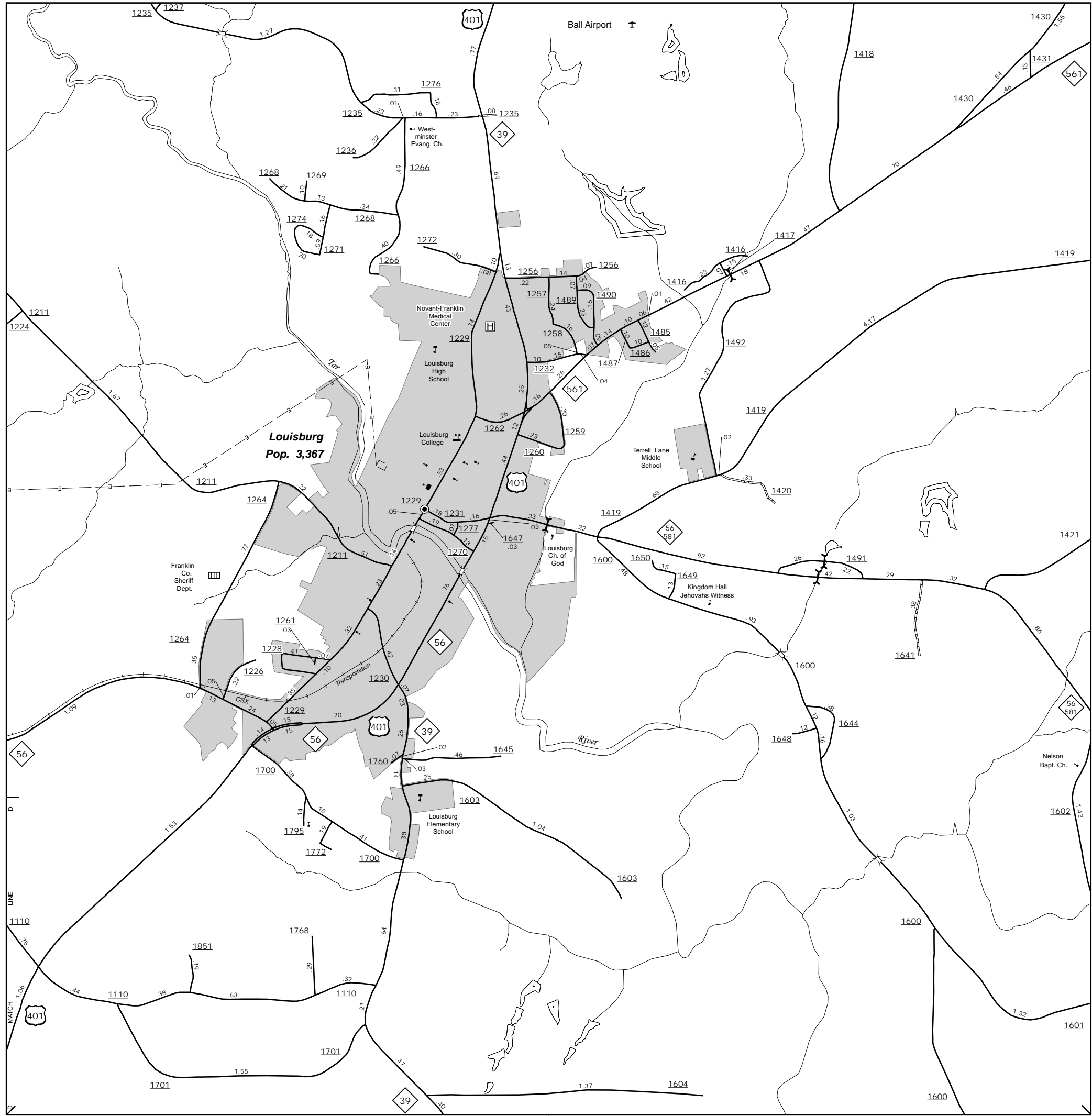
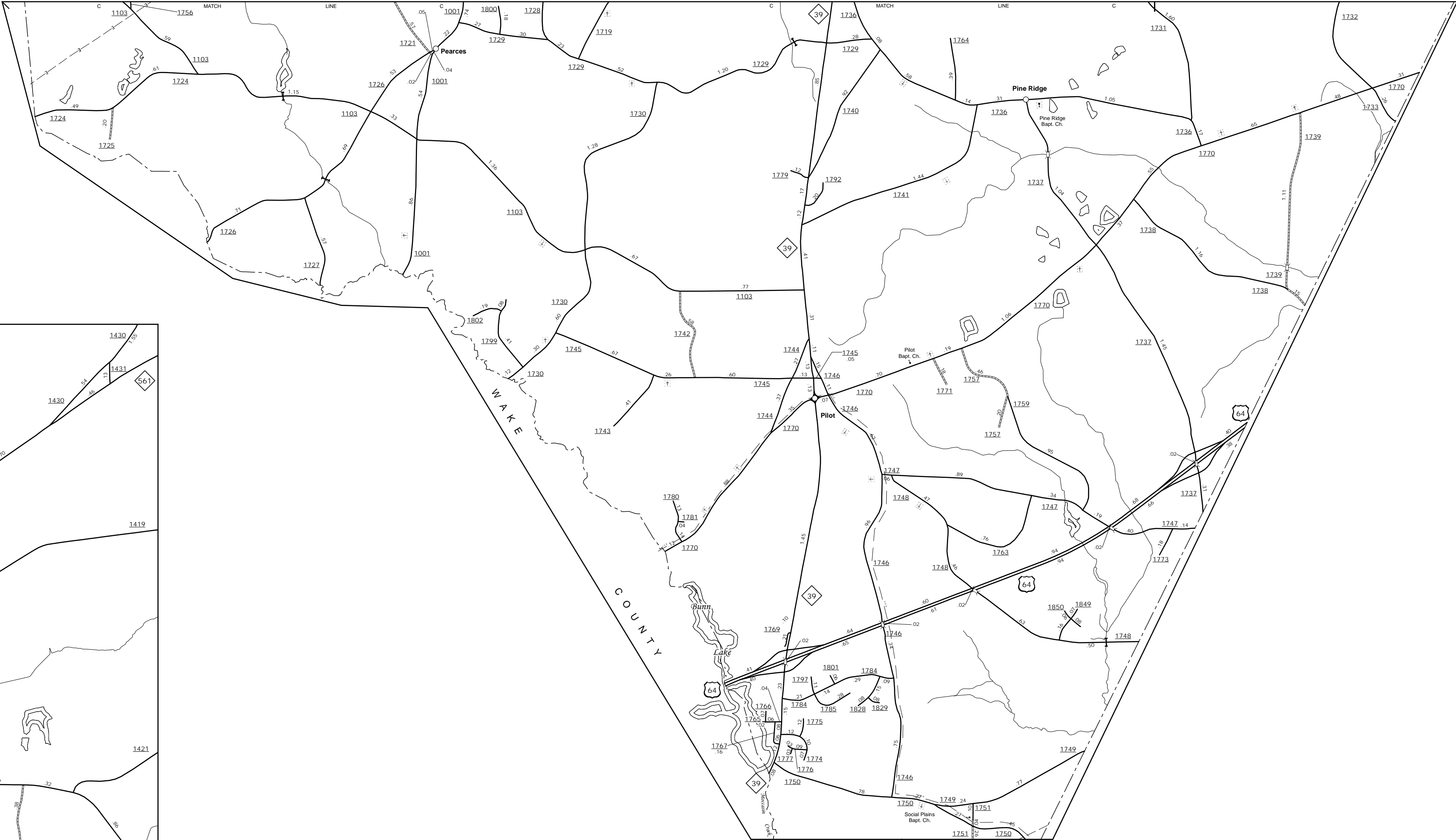


The Mapping Section's goal is to provide the most accurate and current information possible. Map data is compiled from numerous sources with varying degrees of accuracy. The Mapping Section does not warrant the accuracy of the information shown on this map. For additional information, visit <http://www.ncdot.gov/Travel/Information/MapData> and click on Data Providers or contact us by phone at (919) 835-8480.

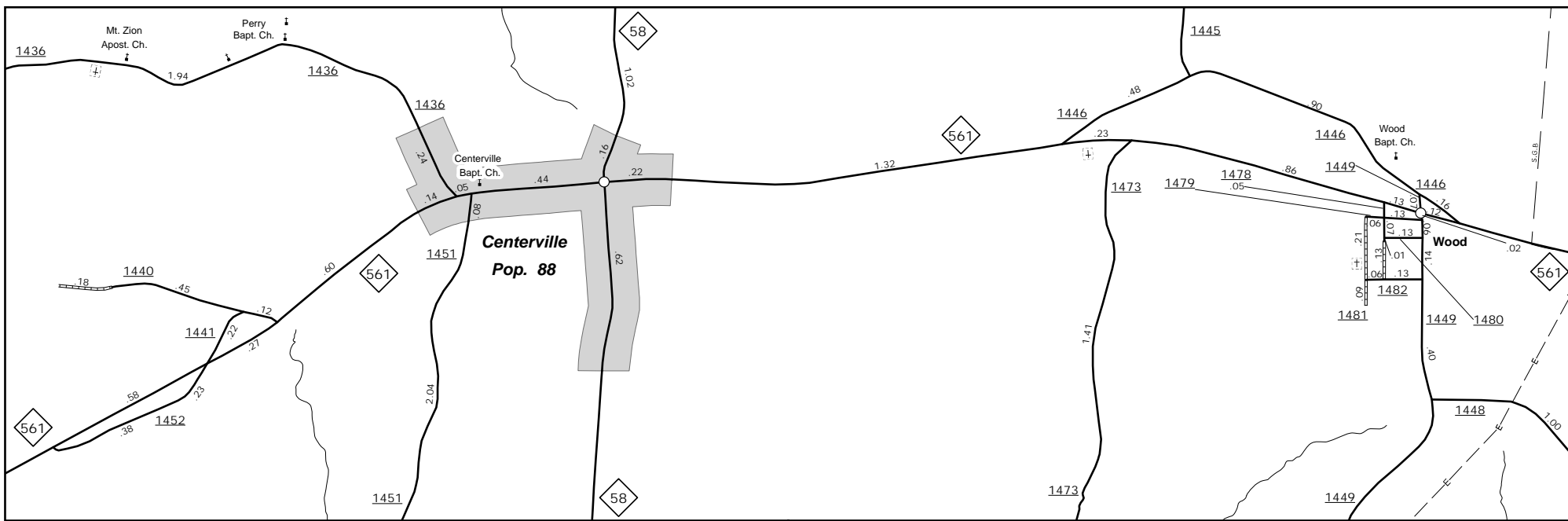
COPIES OF THIS MAP ARE AVAILABLE
FOR PURCHASE AT A PUBLIC UTILITY NOMINAL COST.
ADDRESS: N.C. DEPARTMENT OF TRANSPORTATION
MSAU - MAPPING SECTION
4809 BERT LEO
Raleigh, NC 27609



Louisville



Pilot

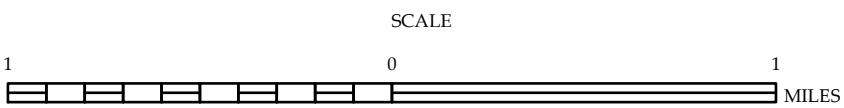


Centerville

ENLARGED MUNICIPAL AND SUBURBAN AREAS

FRANKLIN COUNTY NORTH CAROLINA

PREPARED BY THE
NORTH CAROLINA DEPARTMENT OF TRANSPORTATION
MANAGEMENT SYSTEMS AND ASSESSMENTS UNIT - MAPPING SECTION
IN COOPERATION WITH THE
U.S. DEPARTMENT OF TRANSPORTATION
FEDERAL HIGHWAY ADMINISTRATION



10,000 FOOT GRID BASED ON NORTH CAROLINA PLANE COORDINATE SYSTEM
LAMBERT CONFORMAL CONIC PROJECTION