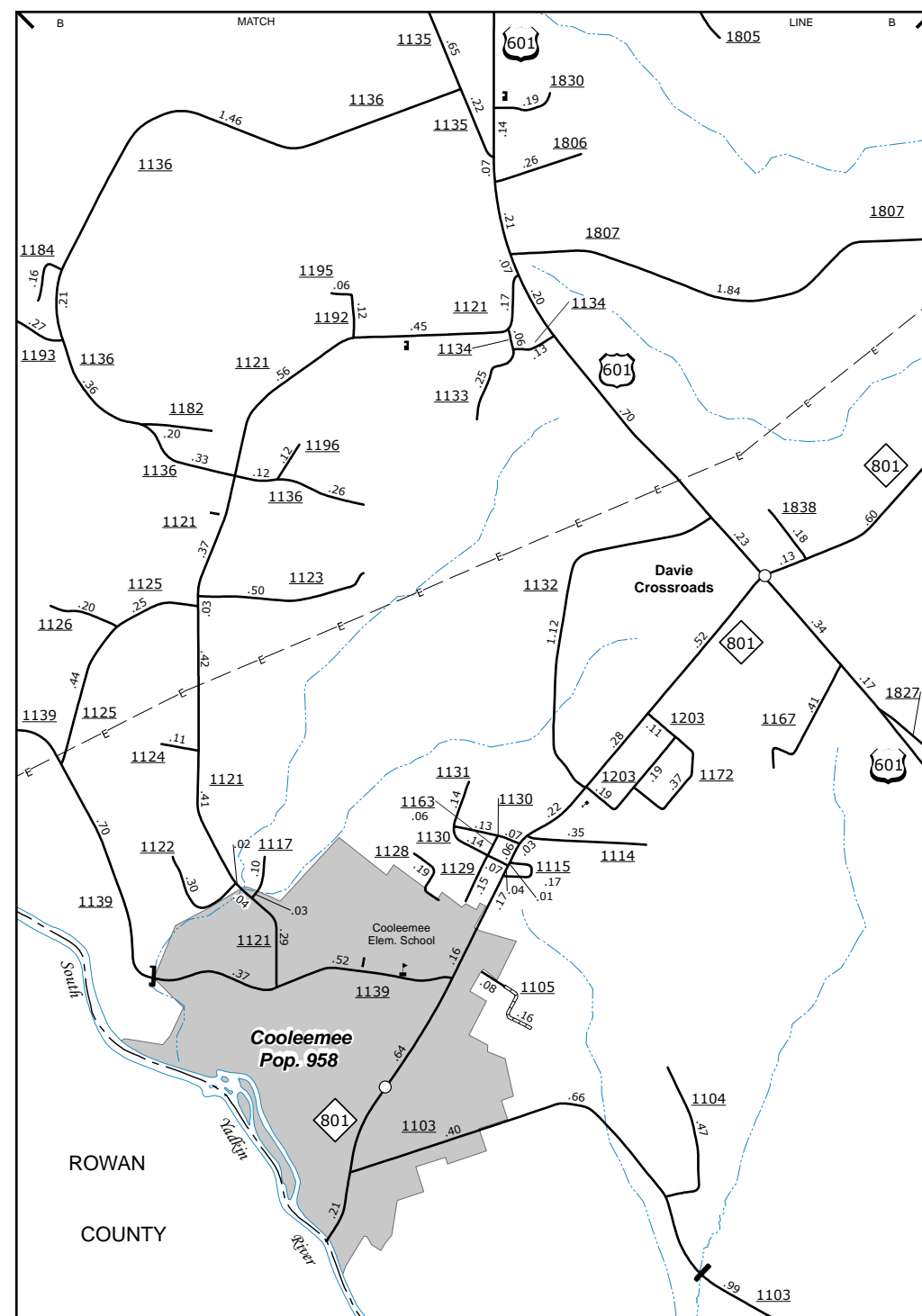
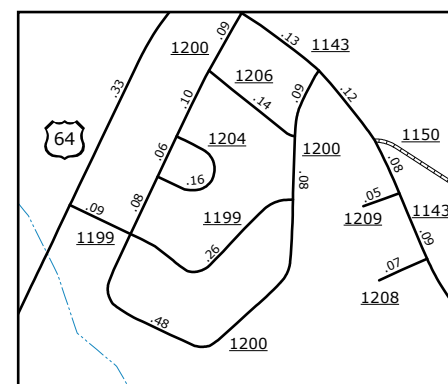


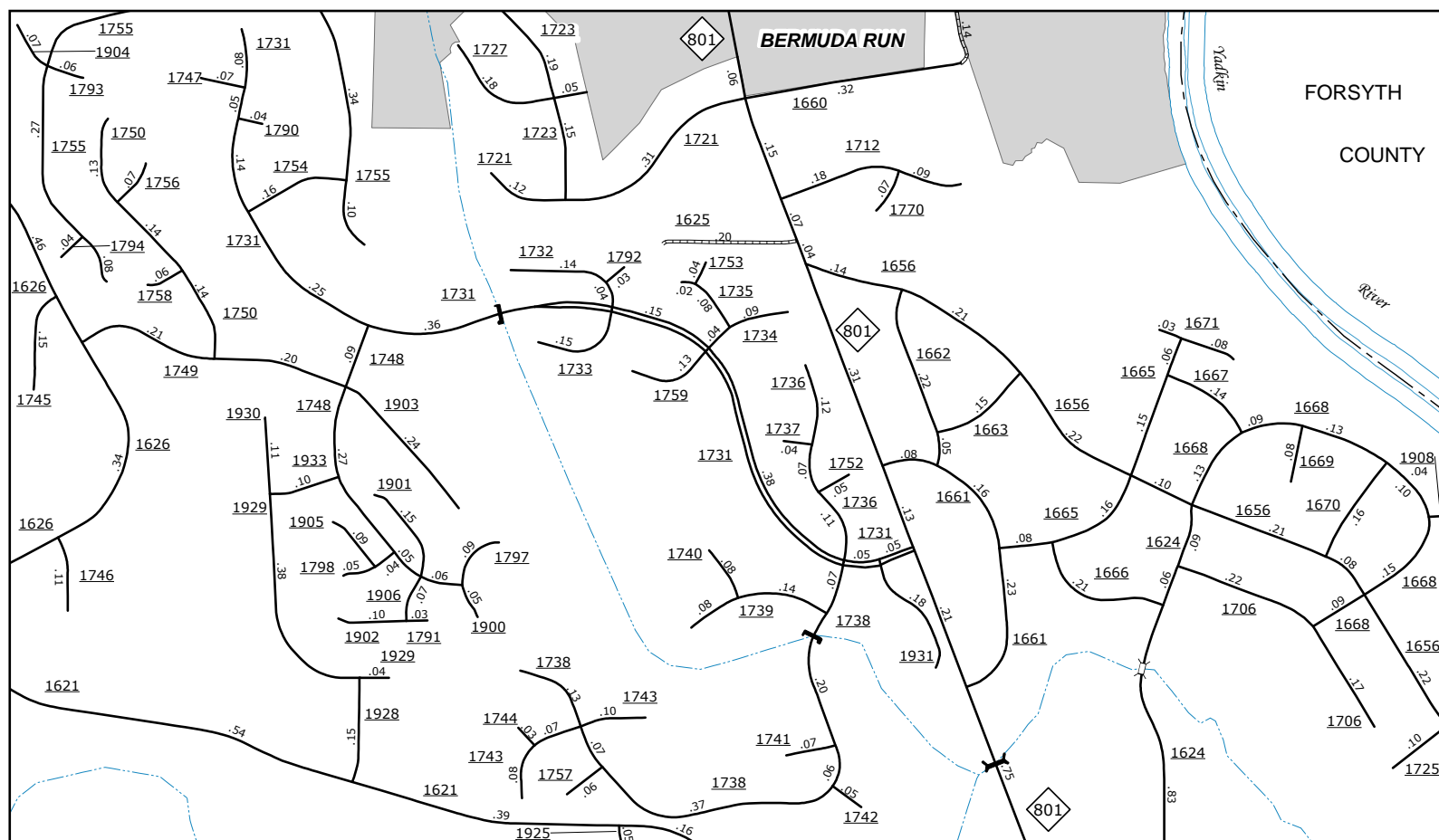
Fork Church



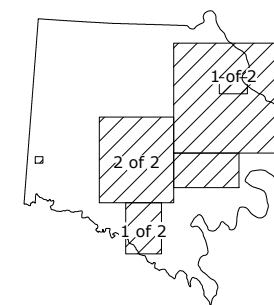
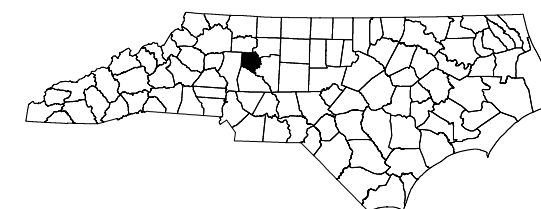
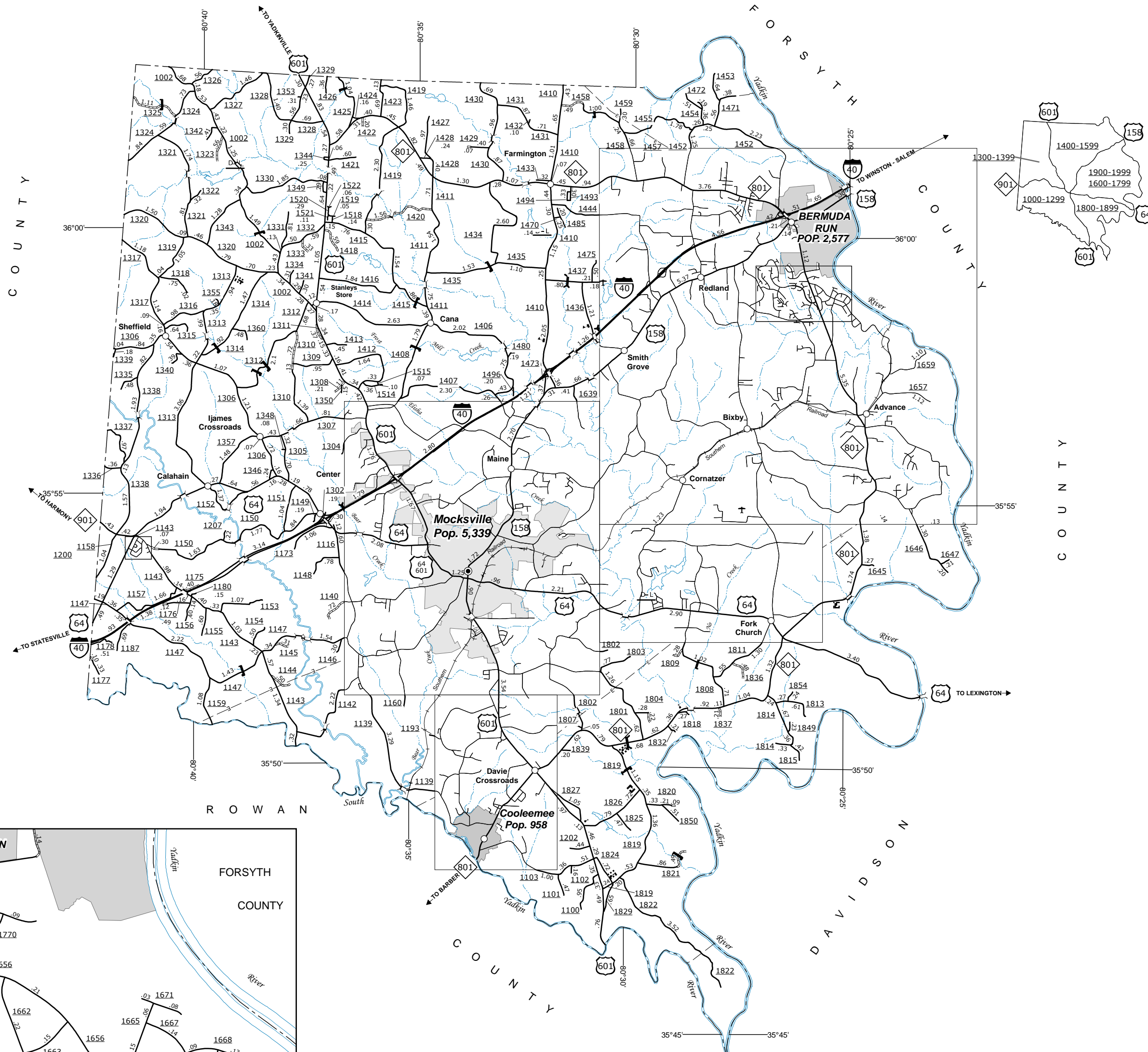
Cooleemee



Oakland Heights



Inset 1



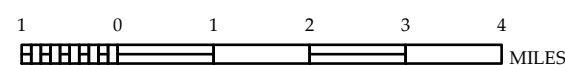
- | LEGEND | |
|--------|-----------------------------------|
| | UNPAVED SURFACED ROAD |
| | HARD SURFACED ROAD |
| | NO-SYSTEM ROADS |
| | DIVIDED HIGHWAY W/ FRONTAGE ROAD |
| | PROJECTED LOCATION |
| | INTERSECTION DISTANCE |
| | TRAFFIC CIRCLE |
| | DETAILED HIGHWAY INTERCHANGE |
| | HIGHWAY BRIDGE |
| | RAILROAD BRIDGE |
| | DRAW SPAN ON BRIDGE |
| | PEDESTRIAN BRIDGE |
| | PEDESTRIAN WALKWAY |
| | PEDESTRIAN UNDERPASS |
| | VEHICULAR UNDERPASS |
| | FORD |
| | TUNNEL |
| | CULVERT |
| | PIPE |
| | INTERSTATE HIGHWAY |
| | U.S. NUMBERED HIGHWAY |
| | N.C. NUMBERED HIGHWAY |
| | U.S. NUMBERED BICYCLE ROUTE |
| | N.C. NUMBERED BICYCLE ROUTE |
| | INTERSTATE INTERCHANGE NUMBER |
| | SECONDARY ROAD NUMBER |
| | UTILITY LINES |
| | RAILROAD STATION |
| | GRADE CROSSING |
| | INSET AREA |
| | NATIONAL FOREST BOUNDARY |
| | RESERVATION OR PARK BOUNDARY |
| | STATE FOREST BOUNDARY |
| | STATE CAMELAND BOUNDARY |
| | FEDERAL CAMELAND BOUNDARY |
| | MILITARY RESERVATION BOUNDARY |
| | STATE LINE |
| | COUNTY LINE |
| | CITY LIMIT |
| | FERRY ROUTE |
| | NARROW CREEK OR STREAM |
| | WIDE RIVER OR CREEK |
| | RESERVOIR, POND OR LAKE W/ ISLAND |
| | DAM OR DAM WITH LOCK |
| | WATERFALL |
| | SWAMP |
| | COMMUNITY, TOWN OR CITY CENTER |
| | COUNTY SEAT |
| | SCHOOL |
| | COLLEGE OR UNIVERSITY |
| | HOSPITAL |
| | STATE GUARD STATION |
| | CHURCH |
| | CHURCH WITH CEMETERY |
| | CEMETERY |
| | PATROL STATION |
| | CORRECTION OR PENAL INSTITUTION |
| | QUARRY |
| | MINE OR PIT |
| | HIGHWAY GARAGE OR MAINT. YARD |
| | HIGHWAY DIV. OR DIST. OFFICE |
| | MILITARY POST |
| | WILDLIFE REFUGE |
| | WEIGH STATION |
| | FAIRGROUNDS |
| | HISTORICAL SITE |
| | POINTS OF INTEREST |
| | STATE FOREST |
| | LIGHTHOUSE |
| | MOUNTAIN SUMMIT |
| | OVERLOOK |
| | GEODETIC MARKER |
| | REST AREA |
| | VISITOR CTR./REST AREA |
| | WELCOME CTR./REST AREA |
| | MAJOR AIRPORT |
| | AIRPORT |
| | MILITARY AIRPORT |
| | HELIPPOINT |



DAVIE COUNTY
NORTH CAROLINA

PREPARED BY THE
NORTH CAROLINA DEPARTMENT OF TRANSPORTATION
MANAGEMENT SYSTEMS AND ASSESSMENTS UNIT - MAPPING SECTION
IN COOPERATION WITH THE
U.S. DEPARTMENT OF TRANSPORTATION
FEDERAL HIGHWAY ADMINISTRATION

SCALE



SCALE FOR ENLARGEMENTS

10,000 FOOT GRID BASED ON NORTH CAROLINA PLANE COORDINATE SYSTEM
LAMBERT CONFORMAL CONIC PROJECTION