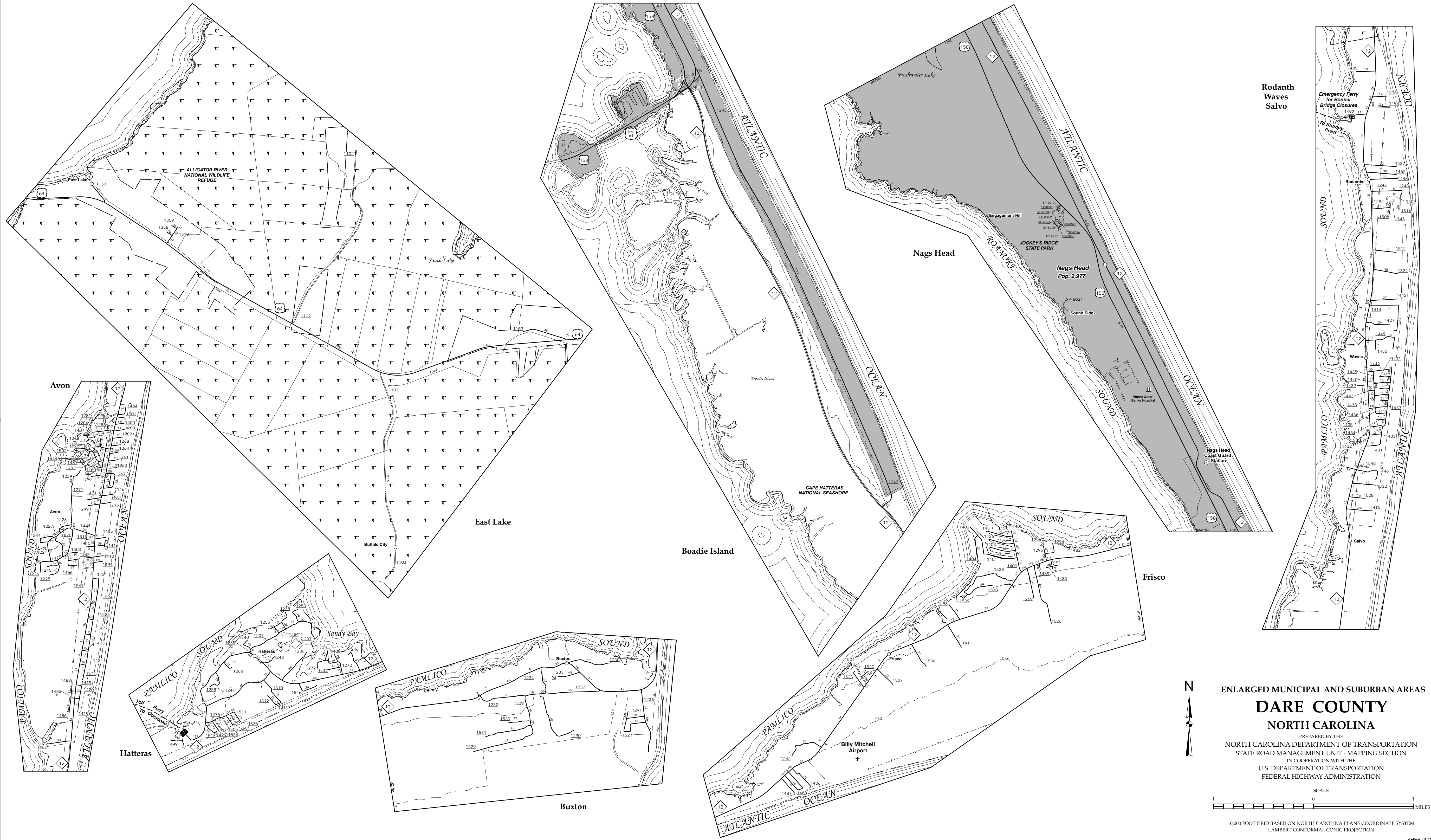


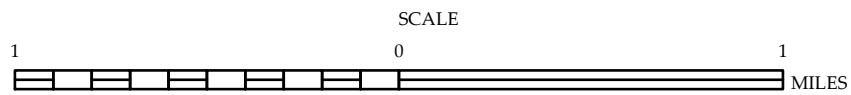
The Mapping Section's goal is to provide the most accurate and current information possible. Map data is compiled from numerous sources with varying degrees of accuracy. Map accuracy standards. As a result, the accuracy of the data provided may vary. This map includes information that is not guaranteed to be accurate. The information shown on this map was last updated in June, 2018. For additional information, visit <http://www.dcdm.gov/transportation> and click on Data Providers or contact us by phone at (919) 835-8480.

COPIES OF THIS MAP ARE AVAILABLE
FOR PURCHASE AT A PUBLIC AT NOMINAL COST.
ADDRESS: N.C. DEPARTMENT OF TRANSPORTATION
SRAU - MAPPING SECTION
4809 BERT RD.
RALEIGH, NC 27609



Rodanthe
Waves
Salvo

ENLARGED MUNICIPAL AND SUBURBAN AREAS
DARE COUNTY
NORTH CAROLINA
PREPARED BY THE
NORTH CAROLINA DEPARTMENT OF TRANSPORTATION
STATE ROAD MANAGEMENT UNIT - MAPPING SECTION
IN COOPERATION WITH THE
U.S. DEPARTMENT OF TRANSPORTATION
FEDERAL HIGHWAY ADMINISTRATION



10,000 FOOT GRID BASED ON NORTH CAROLINA PLANE COORDINATE SYSTEM
LAMBERT CONFORMAL CONIC PROJECTION

SHEET 3 OF 3