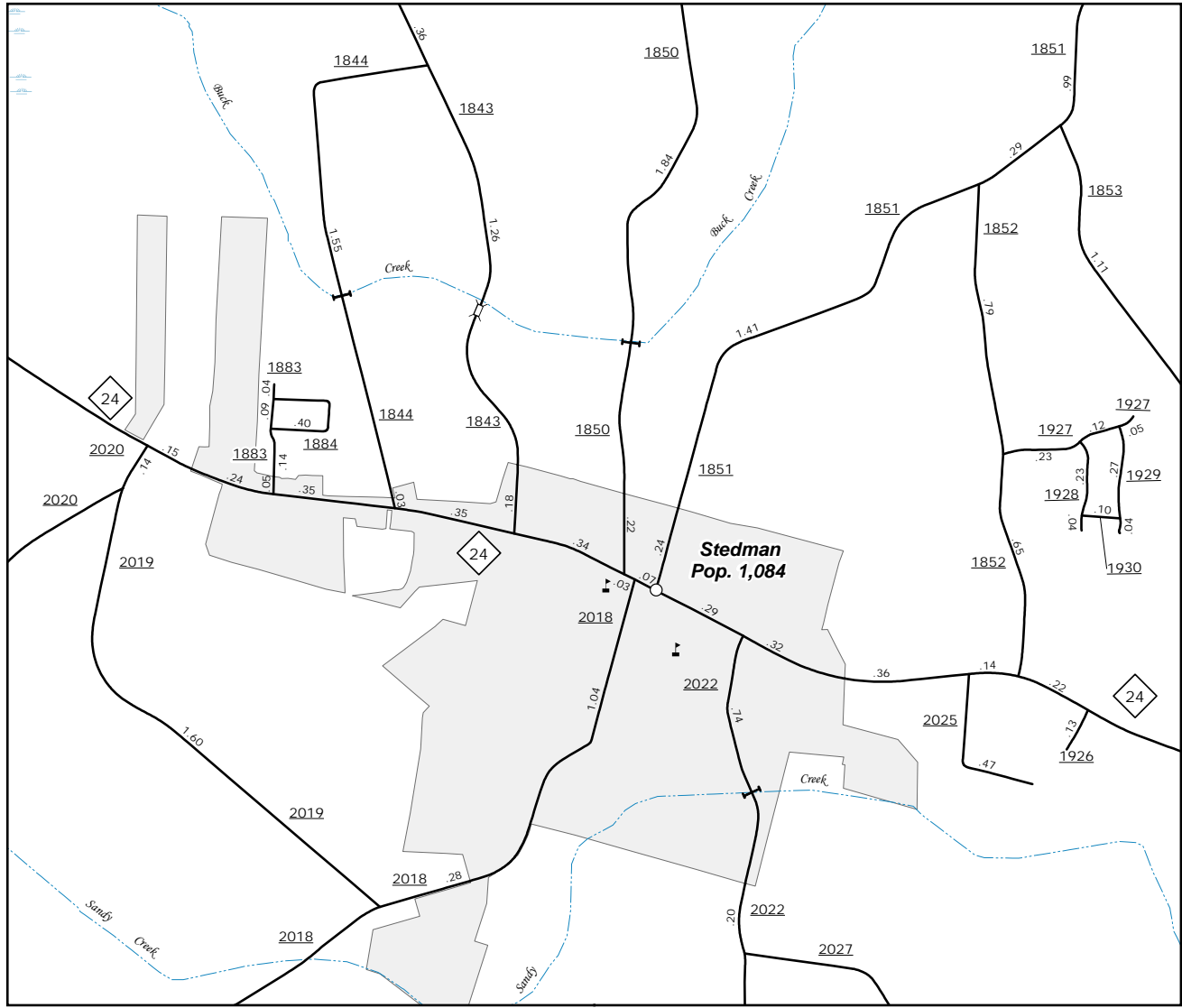
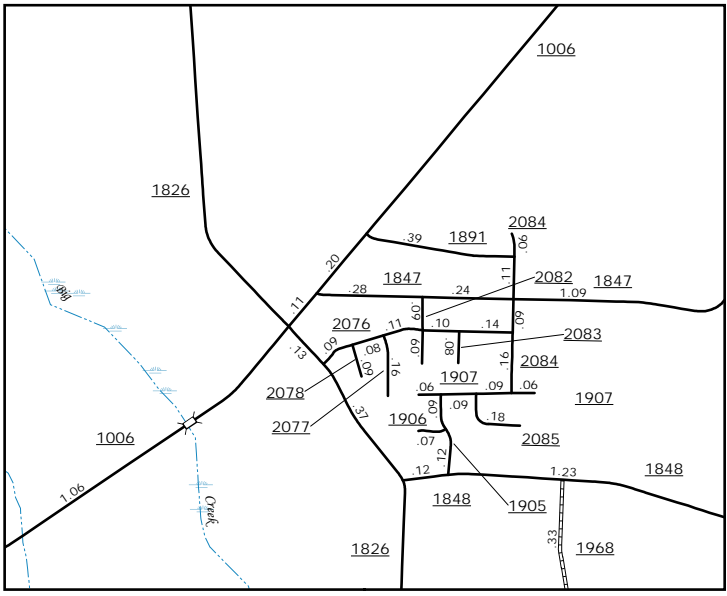


The Mapping Section's goal is to provide the most accurate and current information possible. Map data is compiled from numerous sources with varying degrees of precision. While every effort is made to ensure the accuracy of the information presented, the user should be aware that the information is not a substitute for a professional survey. For additional information, visit <http://www.ncdot.gov/transportation/mapping>, and click on Data Providers or contact us by phone at (819) 835-8480.

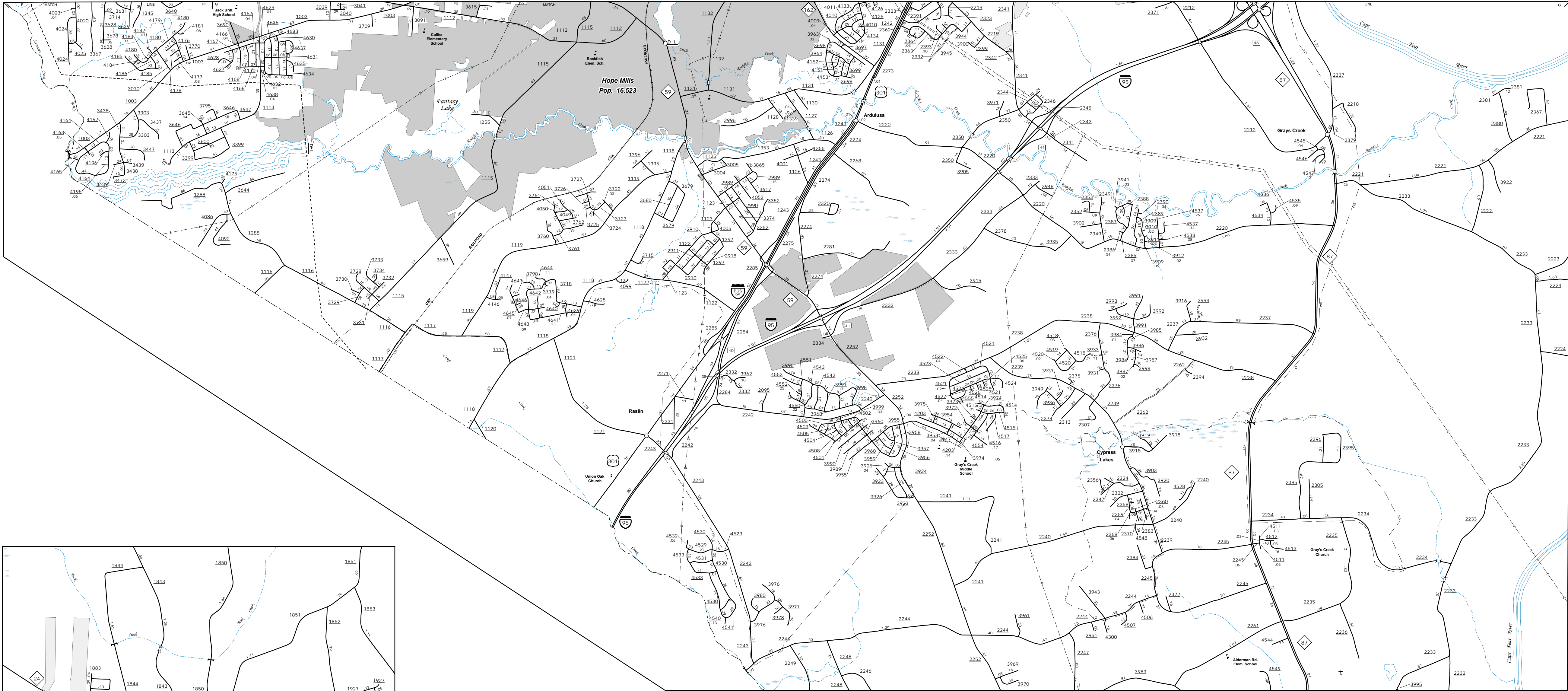
COPIES OF THIS MAP ARE AVAILABLE
AT A PUBLIC AT NOMINAL COST.
ADDRESS:
N.C. DEPARTMENT OF TRANSPORTATION
MSAU - MAPPING SECTION
4809 BERN LEO
COLUMBIA, NC 28038



Stedman



Inset 1



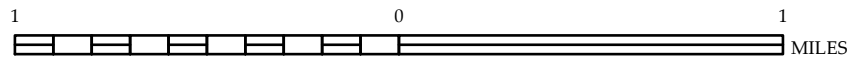
Hope Mills



ENLARGED MUNICIPAL AND SUBURBAN AREAS
CUMBERLAND COUNTY
NORTH CAROLINA

PREPARED BY THE
NORTH CAROLINA DEPARTMENT OF TRANSPORTATION
MANAGEMENT SYSTEMS AND ASSESSMENTS UNIT - MAPPING SECTION
IN COOPERATION WITH THE
U.S. DEPARTMENT OF TRANSPORTATION
FEDERAL HIGHWAY ADMINISTRATION

SCALE



10,000 FOOT GRID BASED ON NORTH CAROLINA PLANE COORDINATE SYSTEM
LAMBERT CONFORMAL CONIC PROJECTION