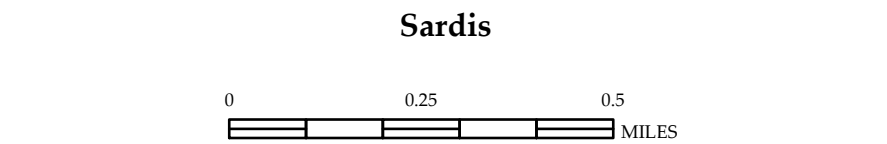
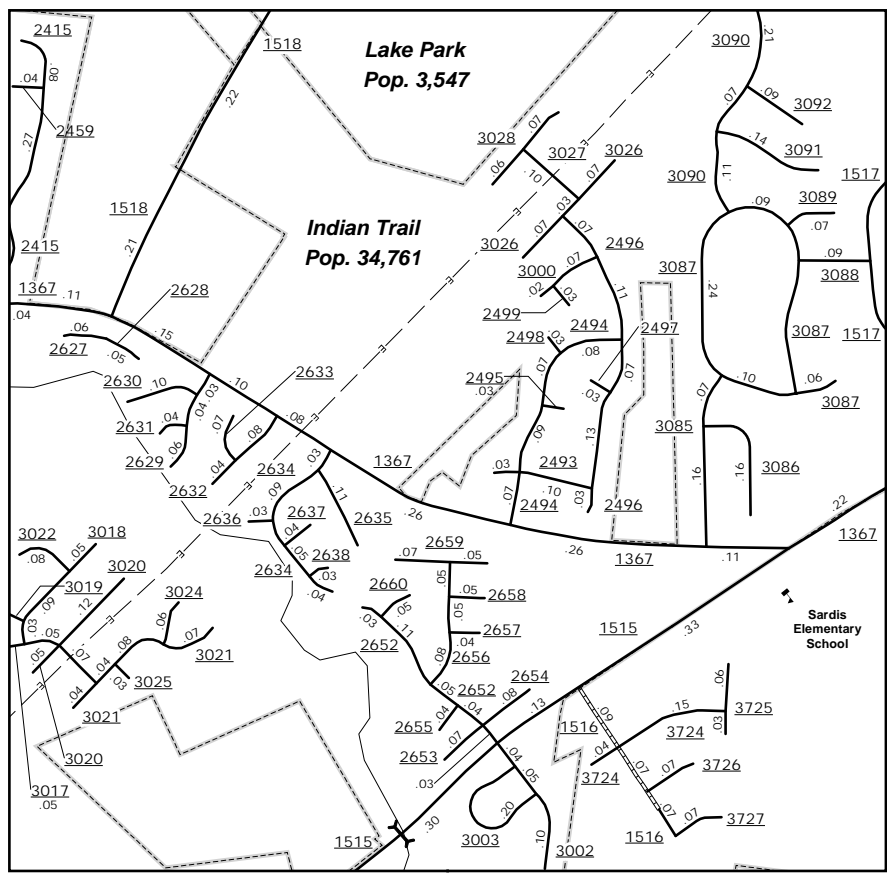
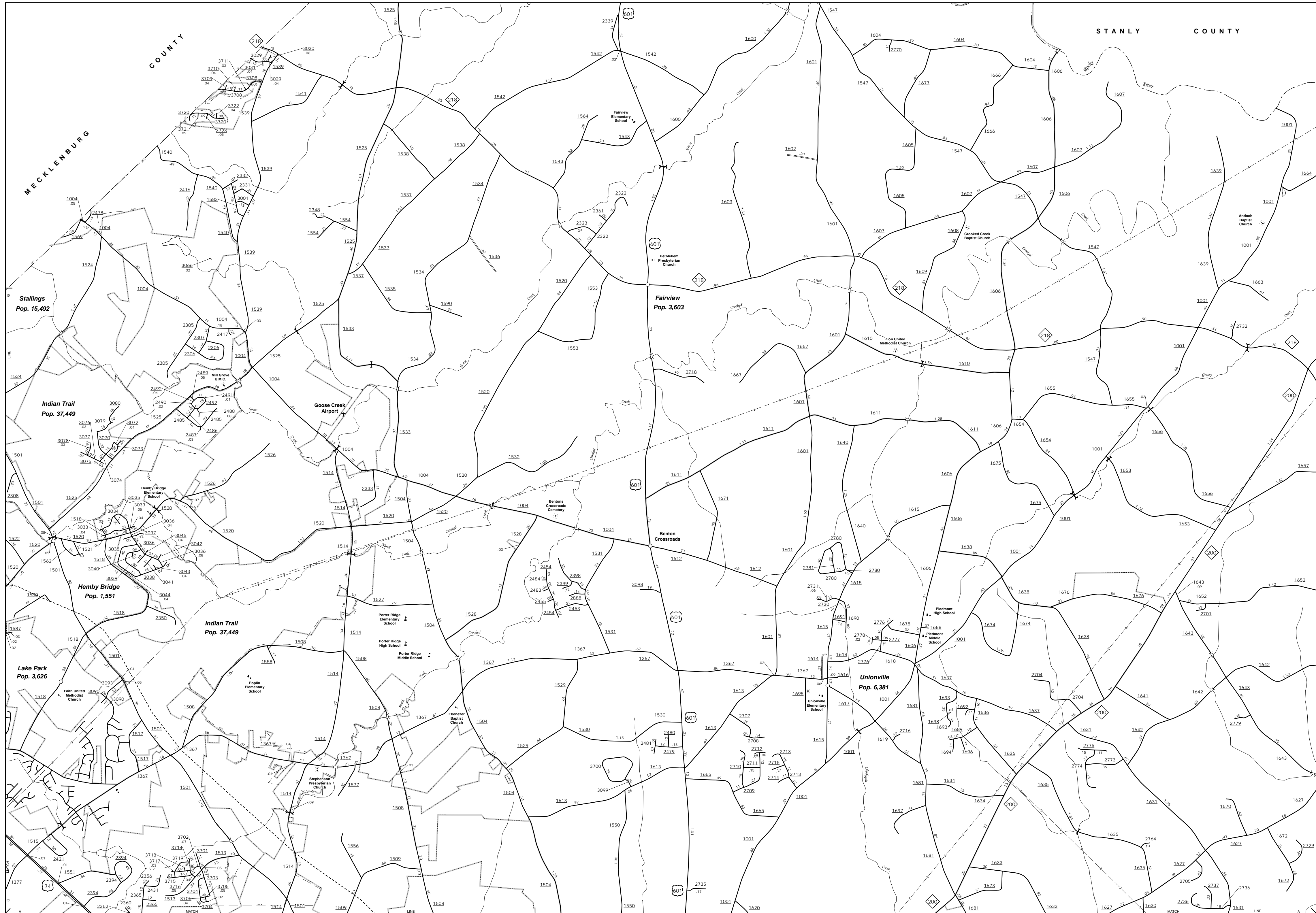
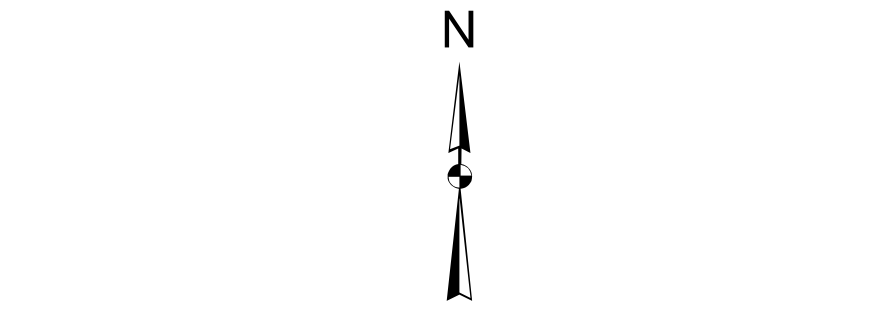


The Mapping Section's goal is to provide the most accurate and current information possible. Map data is compiled from numerous sources with the understanding that map accuracy standards. As a result, the accuracy of the information is not guaranteed. The information is provided for informational purposes only. For additional information, visit <http://www.ncdot.gov/transportation/mapping>, and click on Data Providers or contact us by phone at (919) 835-8480.

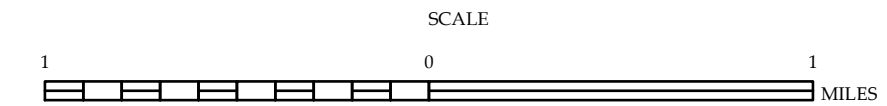
COPIES OF THIS MAP ARE AVAILABLE
FROM THE N.C. DEPARTMENT OF TRANSPORTATION
ADDRESS: N.C. DEPARTMENT OF TRANSPORTATION
MSAU - MAPPING SECTION
4809 BERT LEO
COLUMBUS, NC 28505



Fairview, Hemby Bridge, Lake Park and Unionville



ENLARGED MUNICIPAL AND SUBURBAN AREAS
UNION COUNTY
NORTH CAROLINA
PREPARED BY THE
NORTH CAROLINA DEPARTMENT OF TRANSPORTATION
MANAGEMENT SYSTEMS AND ASSESSMENTS UNIT - MAPPING SECTION
IN COOPERATION WITH THE
U.S. DEPARTMENT OF TRANSPORTATION
FEDERAL HIGHWAY ADMINISTRATION



10,000 FOOT GRID BASED ON NORTH CAROLINA PLANE COORDINATE SYSTEM
LAMBERT CONFORMAL CONIC PROJECTION

SHEET 7 OF 7