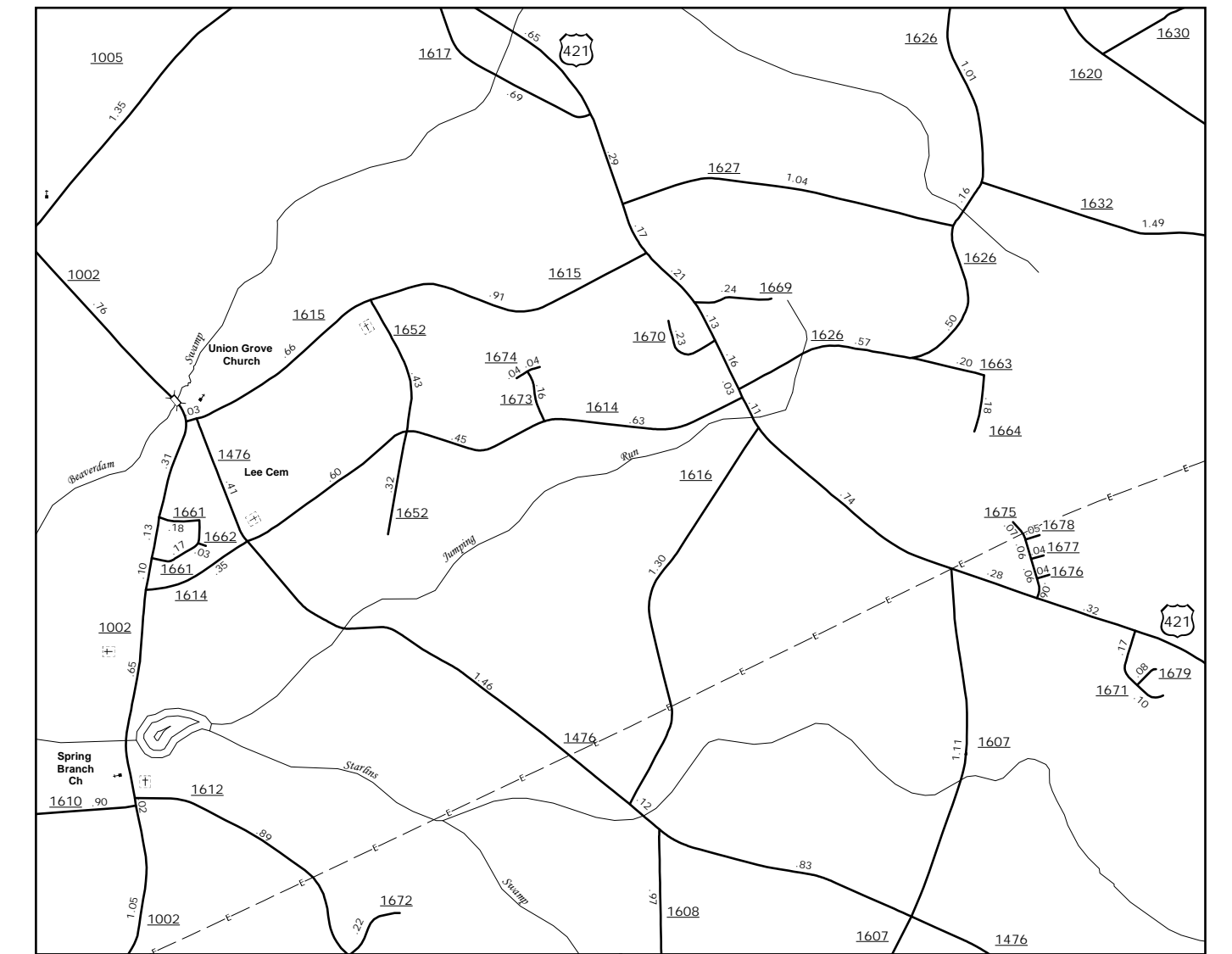




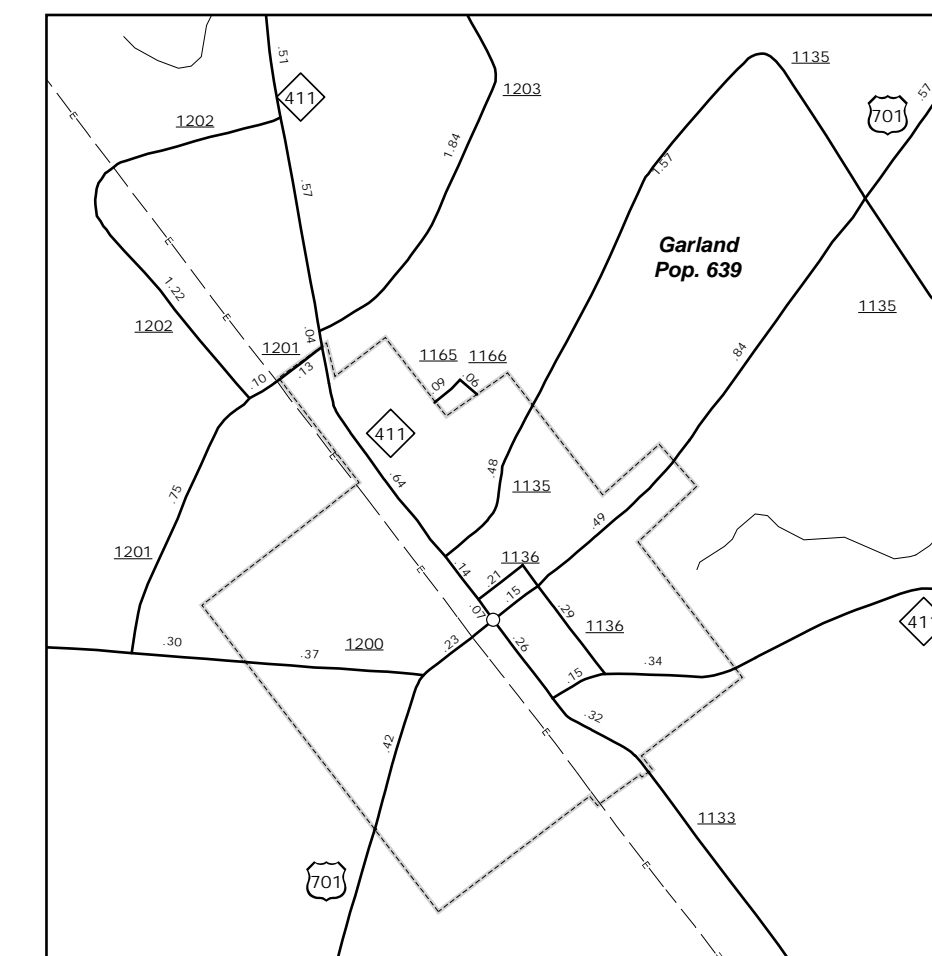
The Mapping Section's goal is to provide the most accurate and current information possible. Map data is compiled from numerous sources with varying dates of publication and map accuracy standards. As a result, the accuracy and currency and completeness of the data provided will vary. This map includes state-maintained roads and important non-system roads.

The information shown on this map was last updated in October, 2017. For additional information, visit <http://www.mnodo.gov/travel/state/maintaining> and click on Data Providers or contact us by phone at (919) 835-6480.

COPIES OF THIS MAP ARE AVAILABLE  
TO THE PUBLIC AT NOMINAL COST.  
ADDRESS:  
N.C. DEPARTMENT OF TRANSPORTATION  
MSAU - MAPPING SECTION  
4809 BERYL RD  
RALEIGH, NC 27606



### Lee's Chapel Area

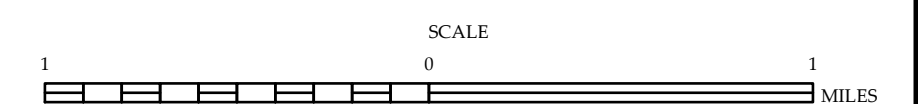


Garland



ENLARGED MUNICIPAL AND SUBURBAN AREAS  
**SAMPSON COUNTY**  
NORTH CAROLINA

PREPARED BY THE  
NORTH CAROLINA DEPARTMENT OF TRANSPORTATION  
MANAGEMENT SYSTEMS AND ASSESSMENT UNIT - MAPPING SECTION  
IN COOPERATION WITH THE  
U.S. DEPARTMENT OF TRANSPORTATION  
FEDERAL HIGHWAY ADMINISTRATION



10,000 FOOT GRID BASED ON NORTH CAROLINA PLANE COORDINATE SYSTEM  
LAMBERT CONFORMAL CONIC PROJECTION