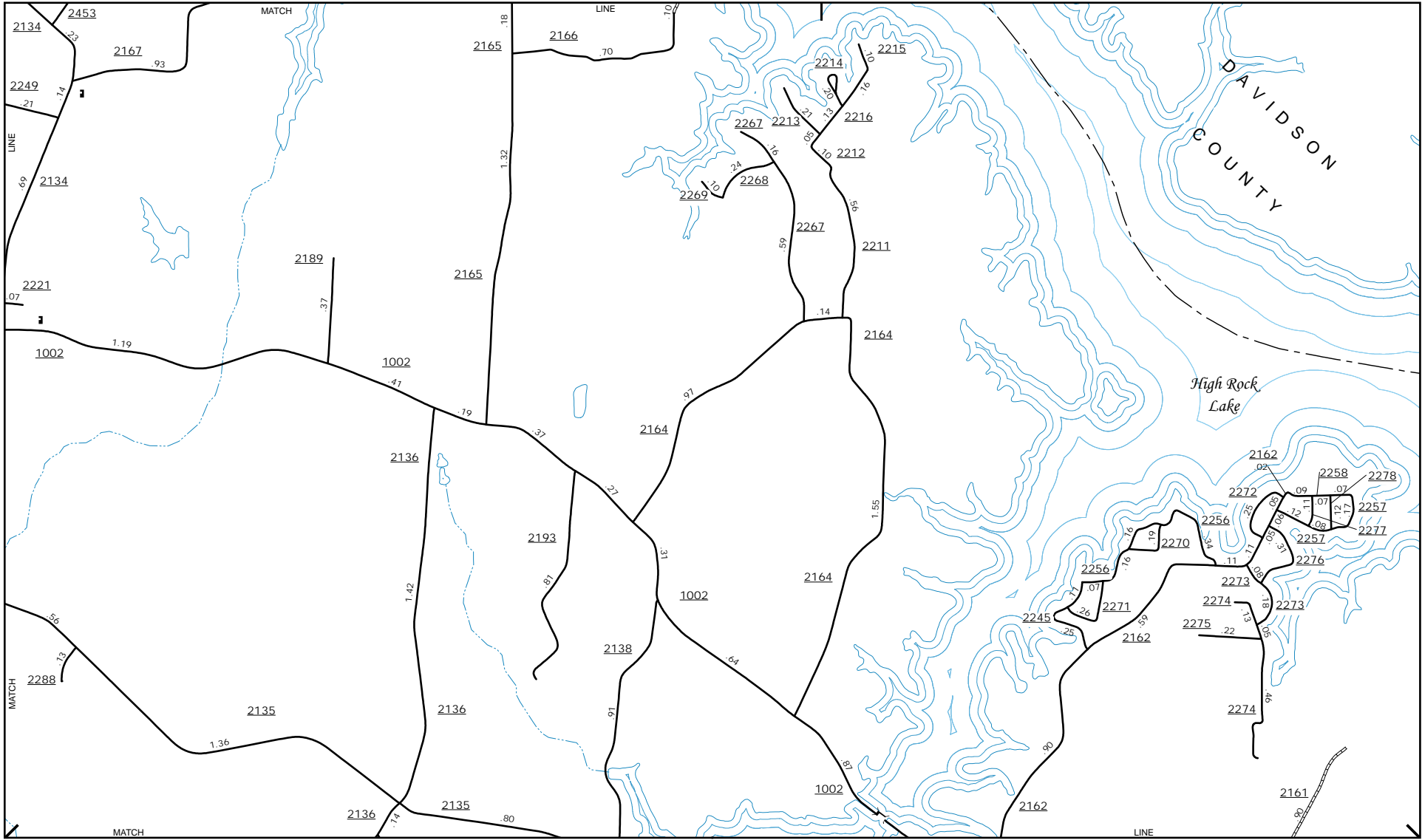
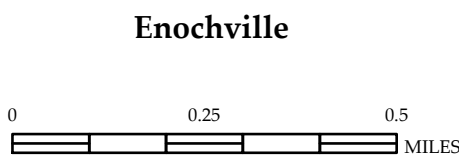
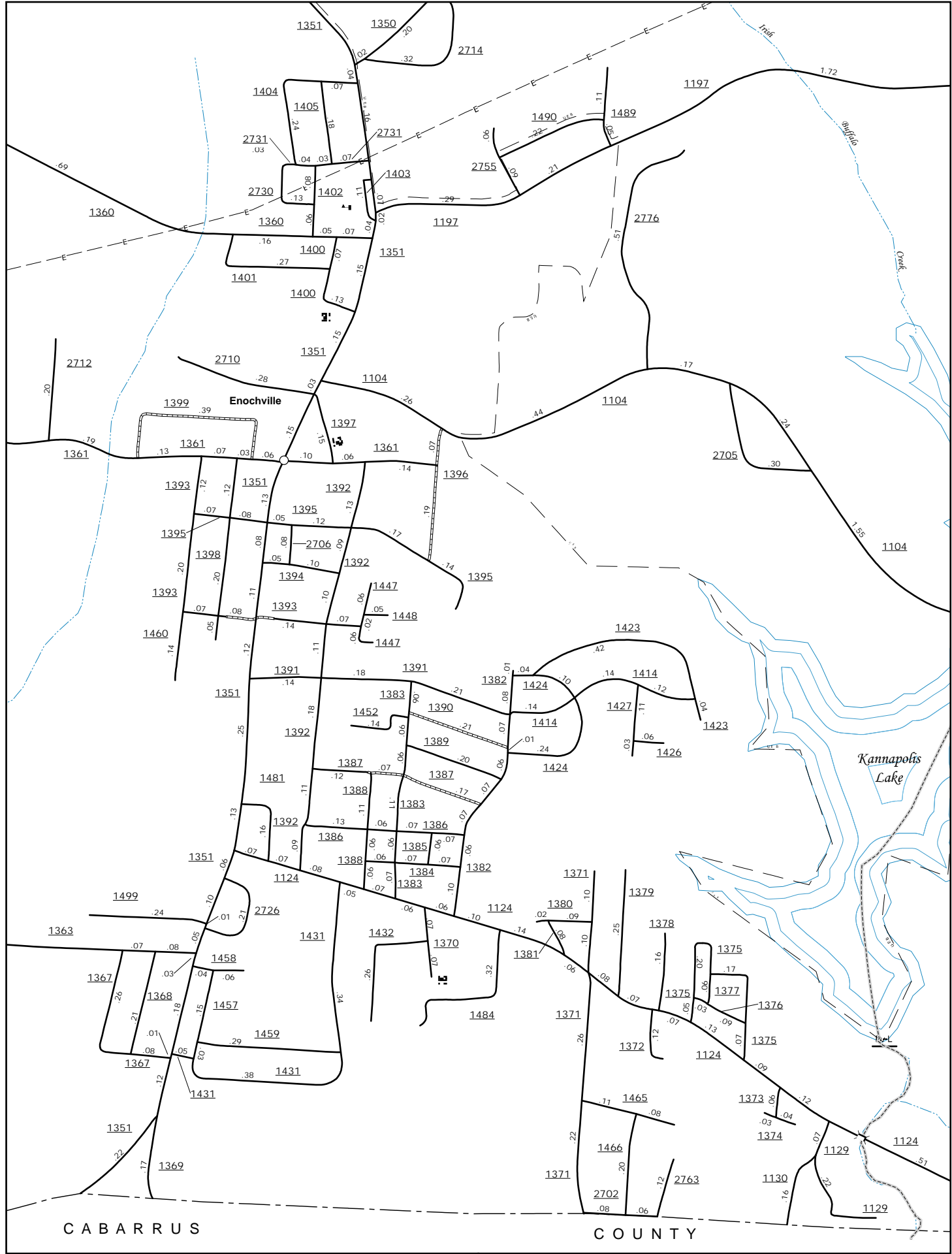
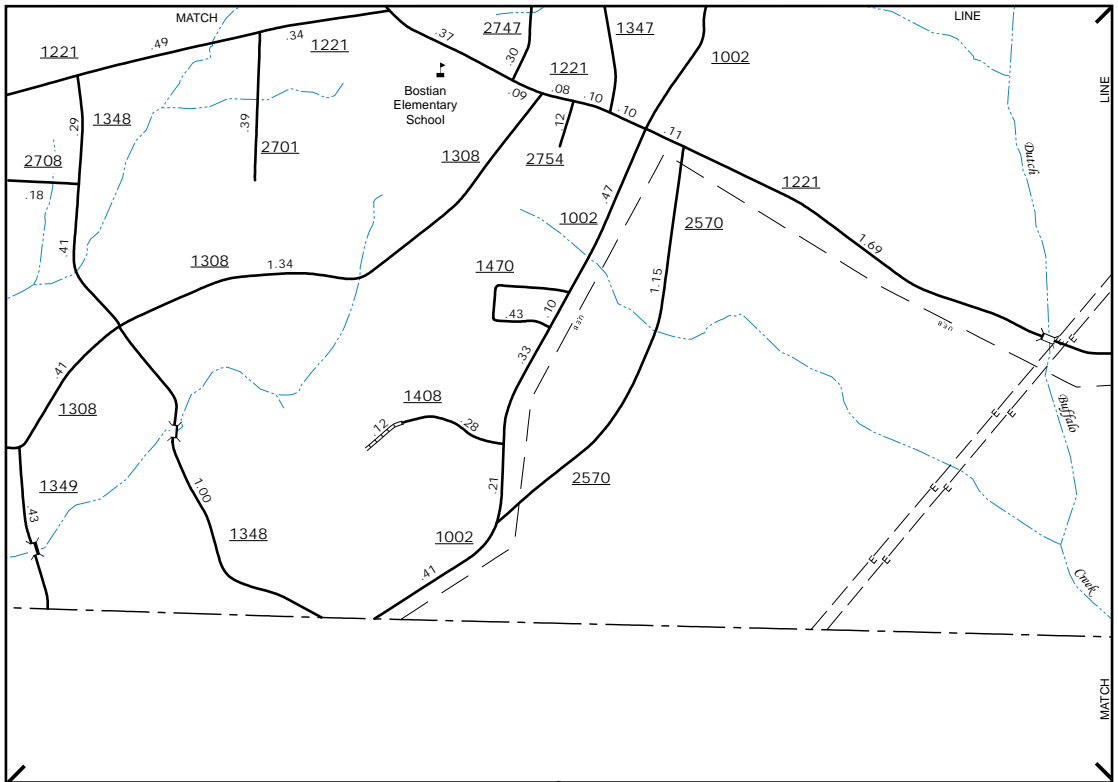


The Mapping Section's goal is to provide the most accurate and current information possible. Map data is compiled from various sources including aerial photography, ground surveys, and other reliable sources. The accuracy of the map is not guaranteed. The map is for informational purposes only. For additional information, visit <http://www.ncdot.gov/transportation/mapping>, and click on Data Providers or contact us by phone at (919) 835-4480.

COPIES OF THIS MAP ARE AVAILABLE
FOR PURCHASE AT A PUBLIC NOMINAL COST
ADDRESS: N.C. DEPARTMENT OF TRANSPORTATION
MSAU - MAPPING SECTION
4809 BERNI, LD
COLUMBIANA, NC 27838



High Rock Lake



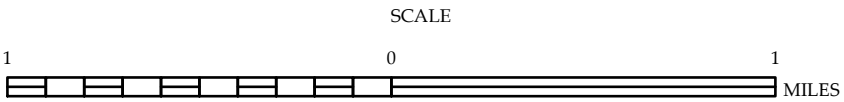
Ebenezer Church Area



ENLARGED MUNICIPAL AND SUBURBAN AREAS

ROWAN COUNTY NORTH CAROLINA

PREPARED BY THE
NORTH CAROLINA DEPARTMENT OF TRANSPORTATION
MANAGEMENT SYSTEMS AND ASSESSMENTS UNIT - MAPPING SECTION
IN COOPERATION WITH THE
U.S. DEPARTMENT OF TRANSPORTATION
FEDERAL HIGHWAY ADMINISTRATION



10,000 FOOT GRID BASED ON NORTH CAROLINA PLANE COORDINATE SYSTEM
LAMBERT CONFORMAL CONIC PROJECTION