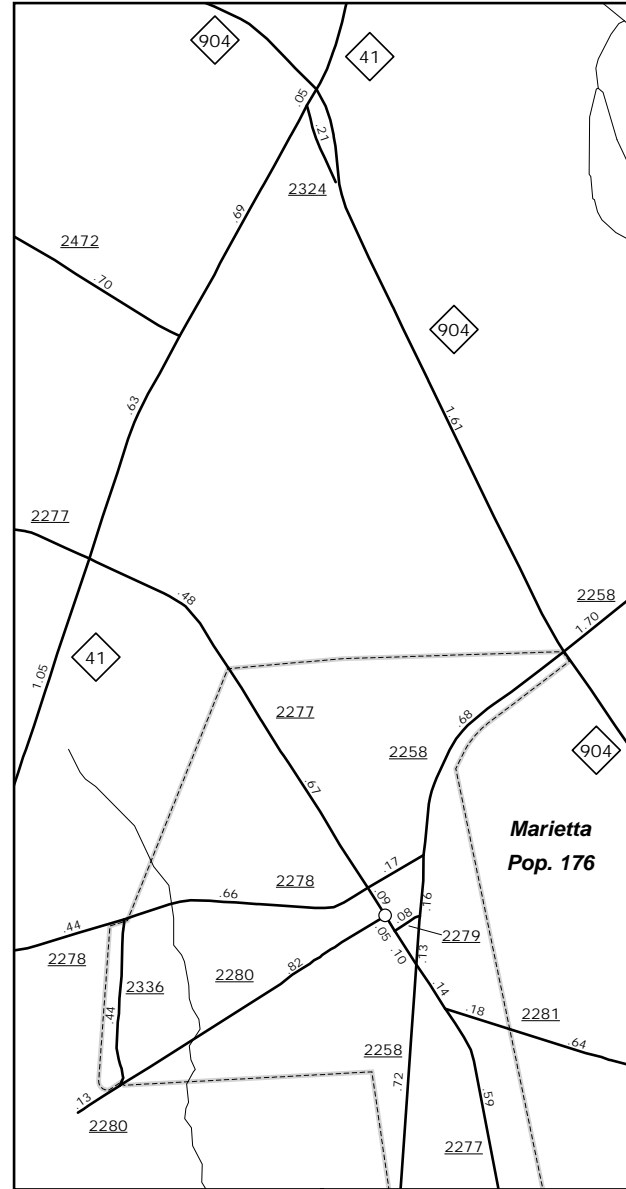
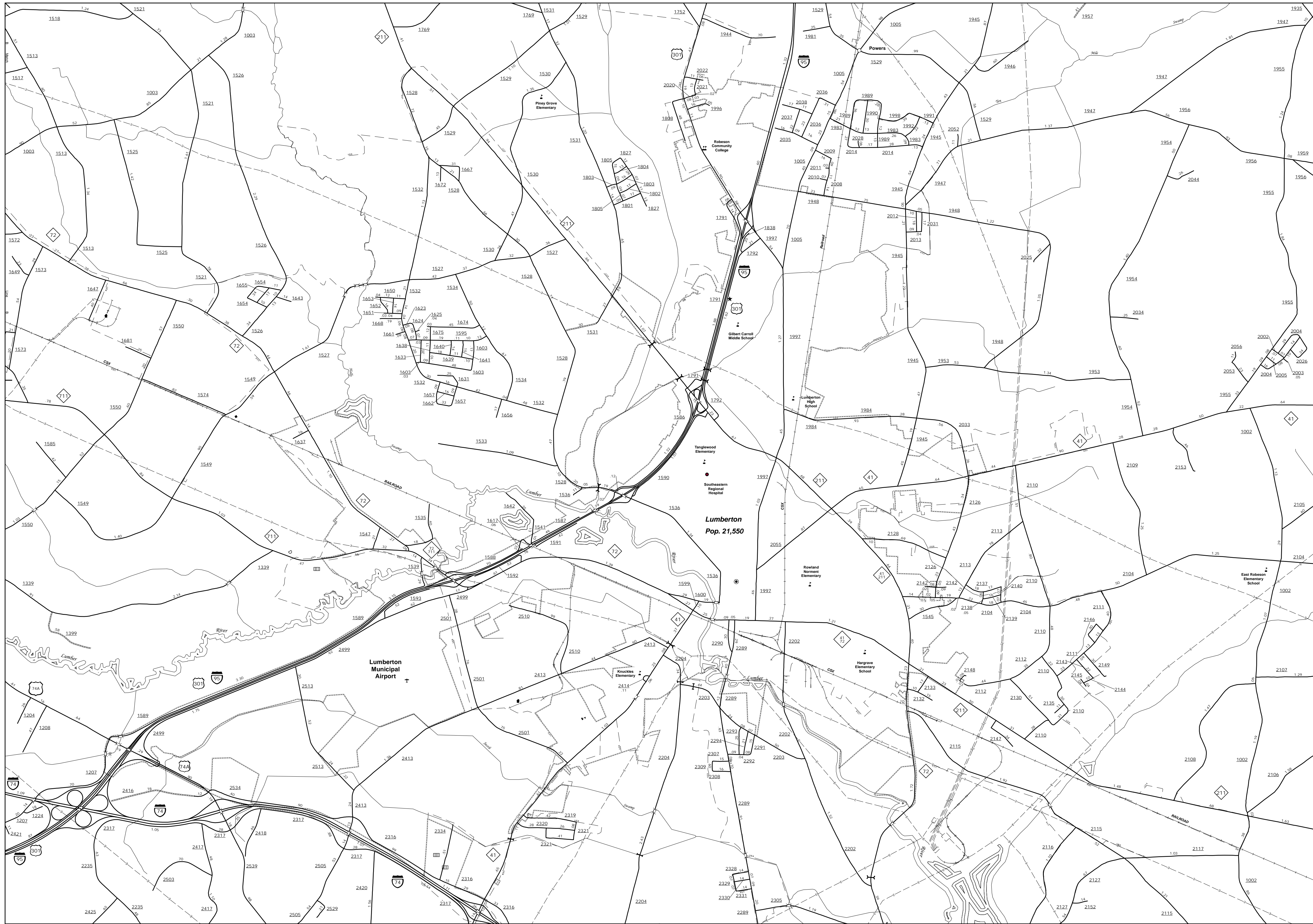
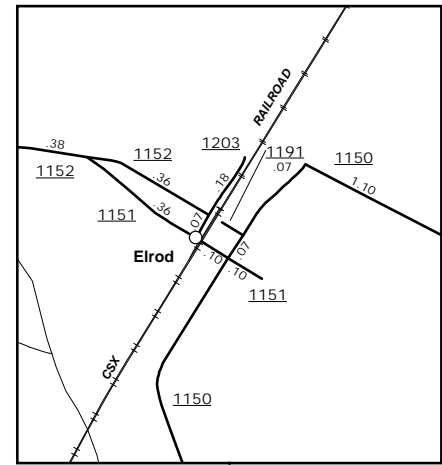


The Mapping Section's goal is to provide the most accurate and current information possible. Map data is compiled from numerous sources and is subject to change. The mapping section is not responsible for any errors or omissions. Accuracy is not guaranteed. The mapping section is not responsible for any errors or omissions. Accuracy is not guaranteed. The mapping section is not responsible for any errors or omissions. Accuracy is not guaranteed.

COPIES OF THIS MAP ARE AVAILABLE
FROM THE NORTH CAROLINA DEPARTMENT OF TRANSPORTATION
ADDRESS: N.C. DEPARTMENT OF TRANSPORTATION
4800 BERNARD RD.
Raleigh, NC 27609



Marietta



Elrod

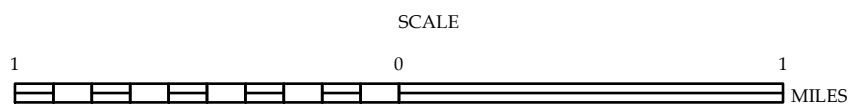


Lumberton

ENLARGED MUNICIPAL AND SUBURBAN AREAS

ROBESON COUNTY NORTH CAROLINA

PREPARED BY THE
NORTH CAROLINA DEPARTMENT OF TRANSPORTATION
MANAGEMENT SYSTEMS AND ASSESSMENTS UNIT - MAPPING SECTION
IN COOPERATION WITH THE
U.S. DEPARTMENT OF TRANSPORTATION
FEDERAL HIGHWAY ADMINISTRATION



10,000 FOOT GRID BASED ON NORTH CAROLINA PLANE COORDINATE SYSTEM
LAMBERT CONFORMAL CONIC PROJECTION