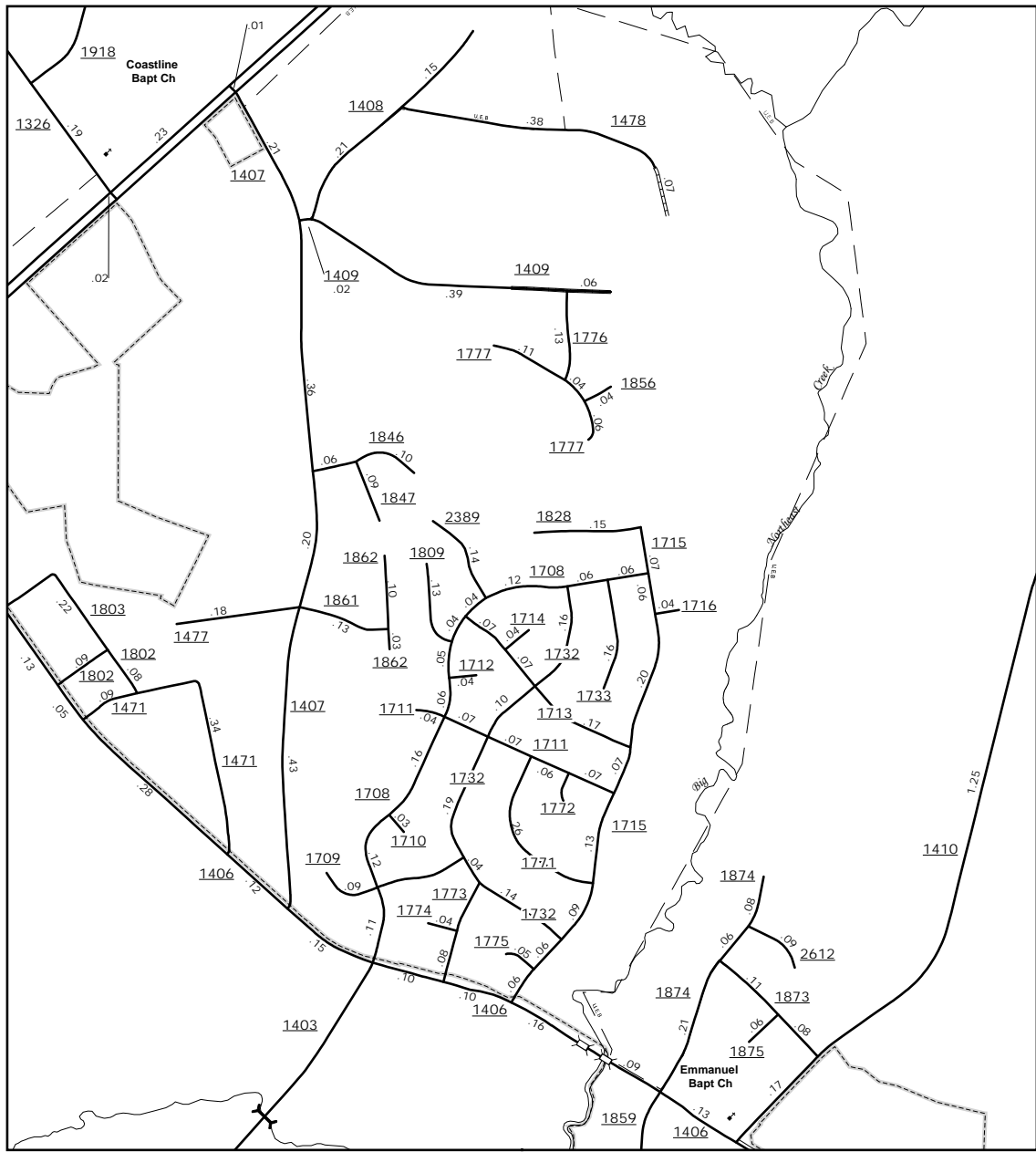


The Mapping Section's goal is to provide the most accurate and current information possible. Map data is compiled from numerous sources with varying degrees of accuracy. Maps are subject to change without notice. Accuracy is not guaranteed. The Department of Transportation Management Systems and Assessment Unit - Mapping Section is responsible for the accuracy of the data. The Department of Transportation Management Systems and Assessment Unit - Mapping Section is responsible for the accuracy of the data. The Department of Transportation Management Systems and Assessment Unit - Mapping Section is responsible for the accuracy of the data.

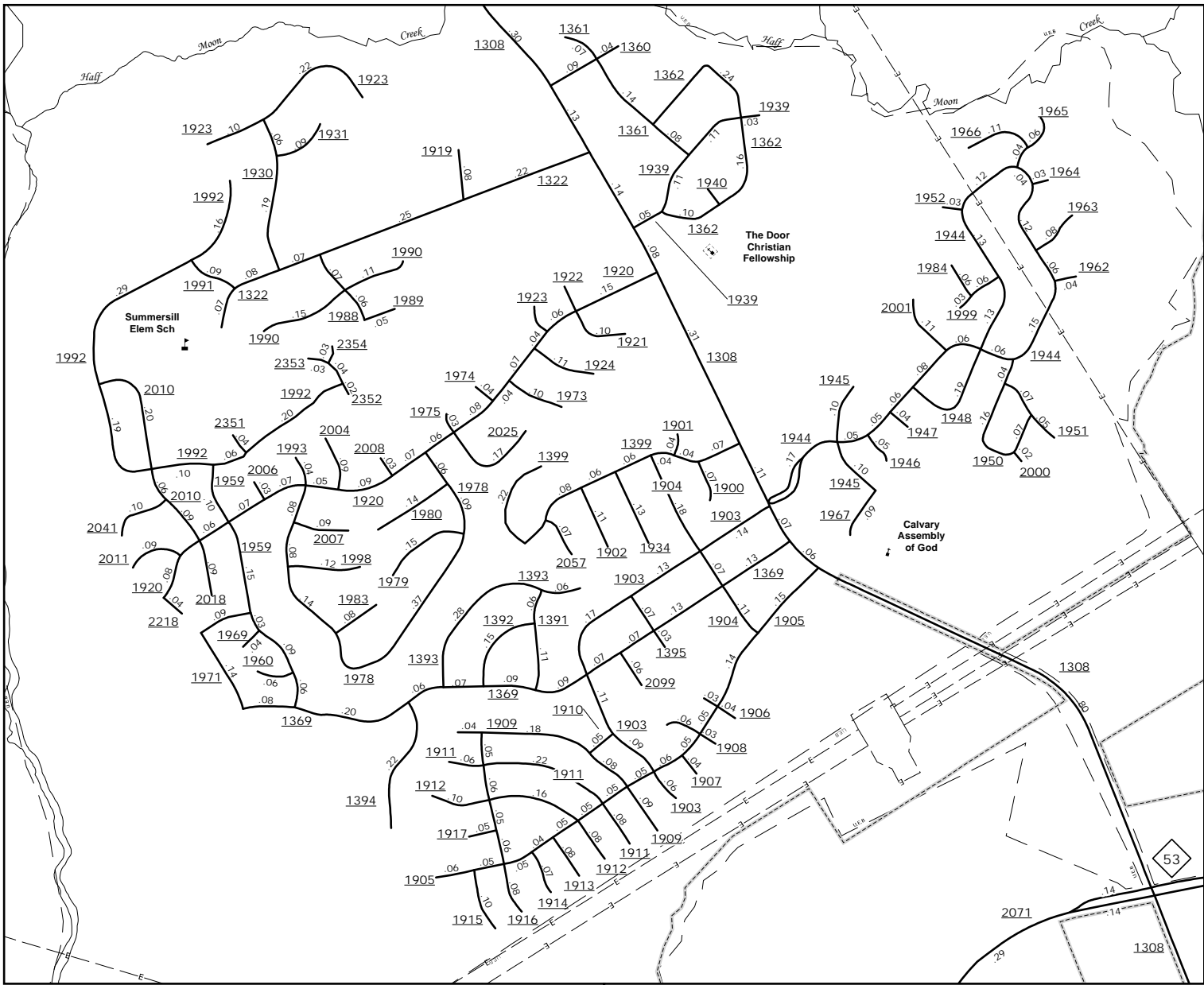
COPIES OF THIS MAP ARE AVAILABLE  
FROM THE  
N.C. DEPARTMENT OF TRANSPORTATION  
MANAGEMENT SYSTEMS AND ASSESSMENT UNIT - MAPPING SECTION  
4809 BERN LANE  
Raleigh, NC 27606



Central Jacksonville



Jacksonville Country Club

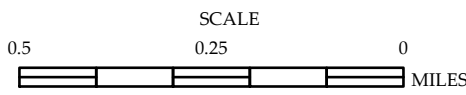


Northeast Jacksonville



ENLARGED MUNICIPAL AND SUBURBAN AREAS  
**ONSLOW COUNTY**  
**NORTH CAROLINA**

PREPARED BY THE  
NORTH CAROLINA DEPARTMENT OF TRANSPORTATION  
MANAGEMENT SYSTEMS AND ASSESSMENT UNIT - MAPPING SECTION  
IN COOPERATION WITH THE  
U.S. DEPARTMENT OF TRANSPORTATION  
FEDERAL HIGHWAY ADMINISTRATION



10,000 FOOT GRID BASED ON NORTH CAROLINA PLANE COORDINATE SYSTEM  
LAMBERT CONFORMAL CONIC PROJECTION