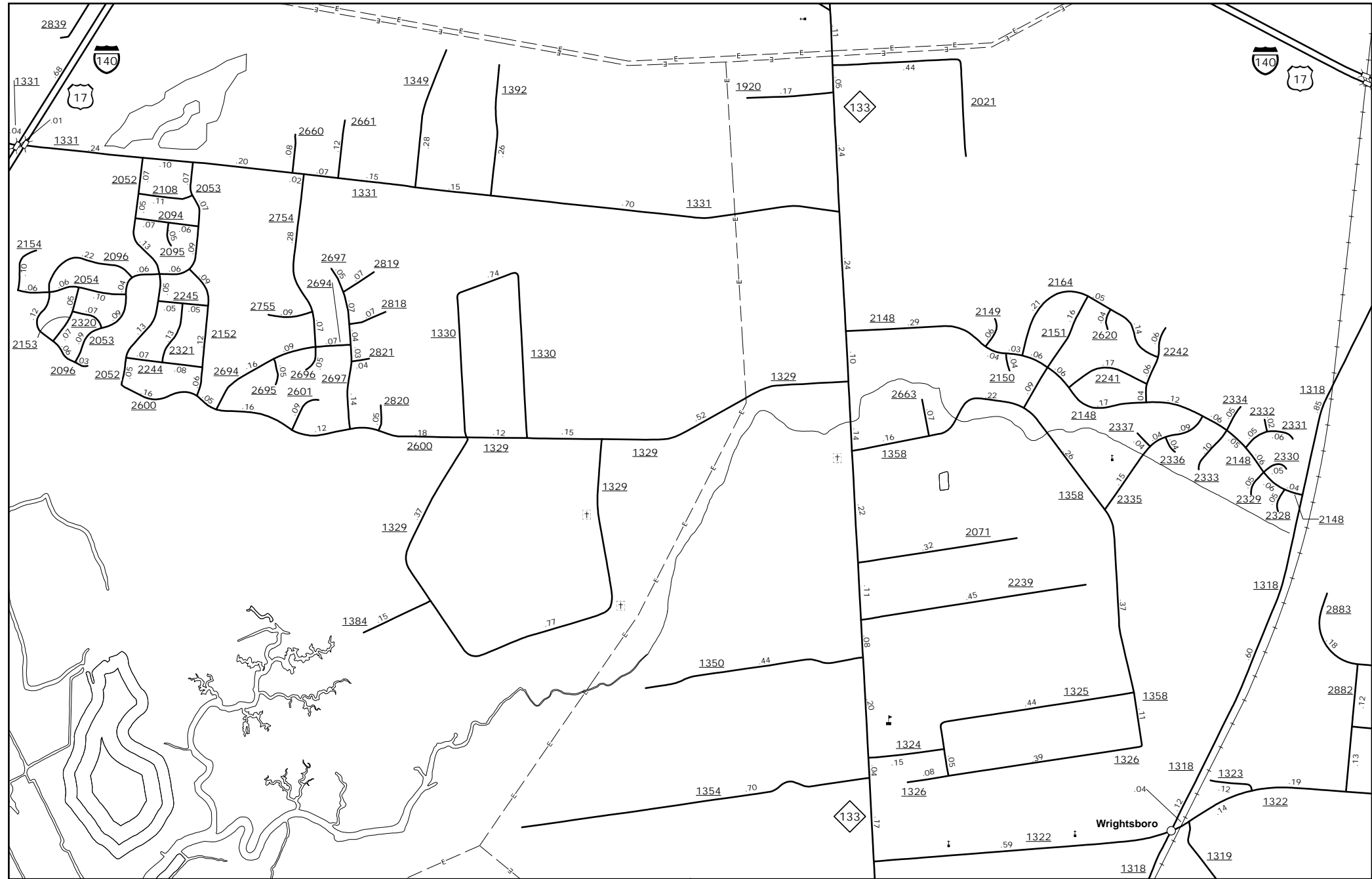
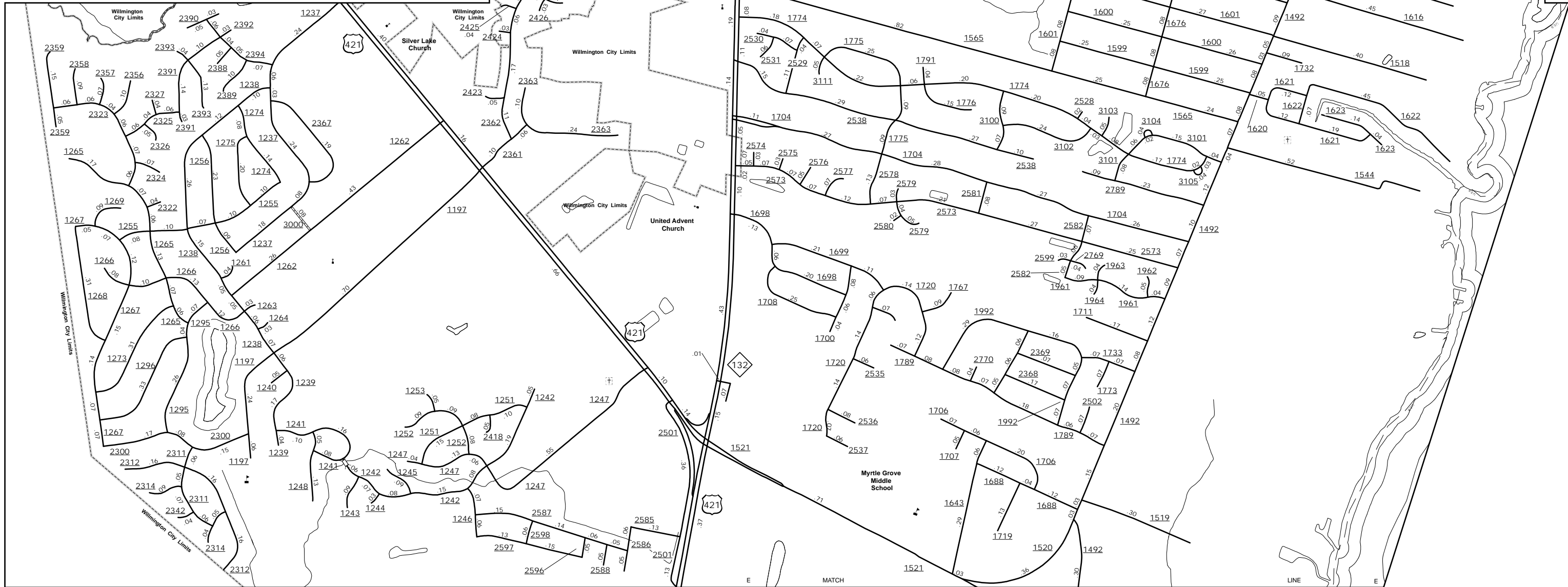


The Mapping Section's goal is to provide the most accurate and current information possible. Map data is compiled from numerous sources with varying degrees of accuracy. While the data is current, it is not guaranteed to be 100% accurate. The data is subject to change without notice. For additional information, visit <http://www.ncdot.gov/transportation/mapping>, and click on Data Providers or contact us by phone at (919) 835-8480.

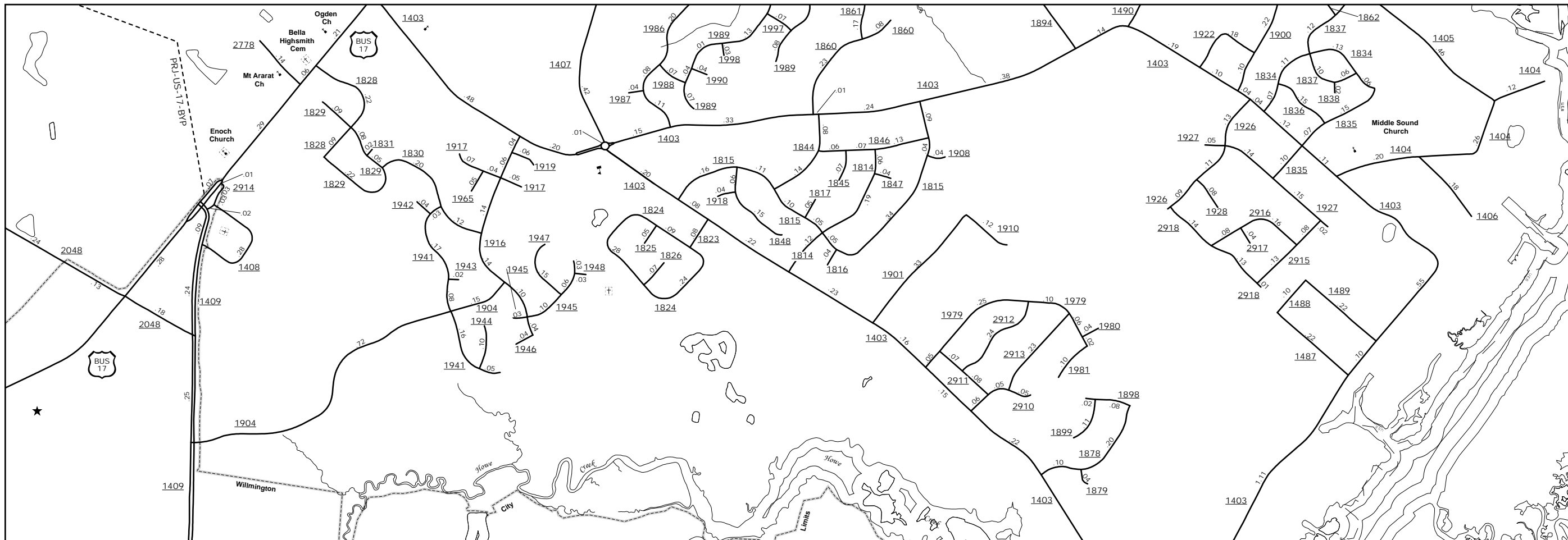
COPIES OF THIS MAP ARE AVAILABLE
FROM THE
N.C. DEPARTMENT OF TRANSPORTATION
ADDRESS:
MSAU - MAPPING SECTION
4809 BERNI RD.
CARRIEDSON, NC 27513



Wrightsboro



Myrtle Grove vicinity

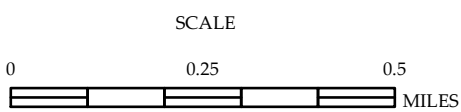


Ogden Elementary area



ENLARGED MUNICIPAL AND SUBURBAN AREAS
NEW HANOVER COUNTY
NORTH CAROLINA

PREPARED BY THE
NORTH CAROLINA DEPARTMENT OF TRANSPORTATION
MANAGEMENT SYSTEMS AND ASSESSMENT UNIT - MAPPING SECTION
IN COOPERATION WITH THE
U.S. DEPARTMENT OF TRANSPORTATION
FEDERAL HIGHWAY ADMINISTRATION



10,000 FOOT GRID BASED ON NORTH CAROLINA PLANE COORDINATE SYSTEM
LAMBERT CONFORMAL CONIC PROJECTION