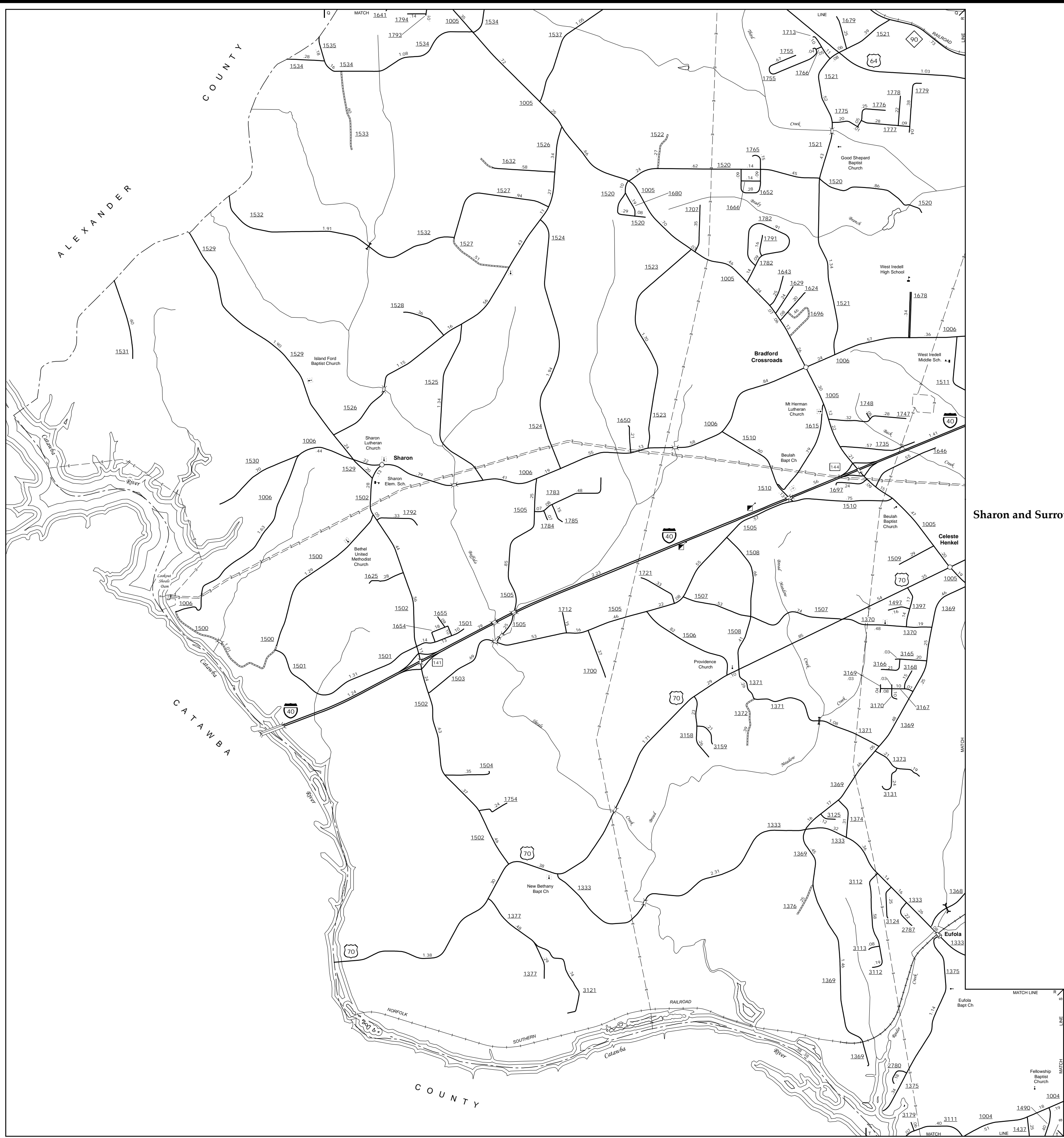


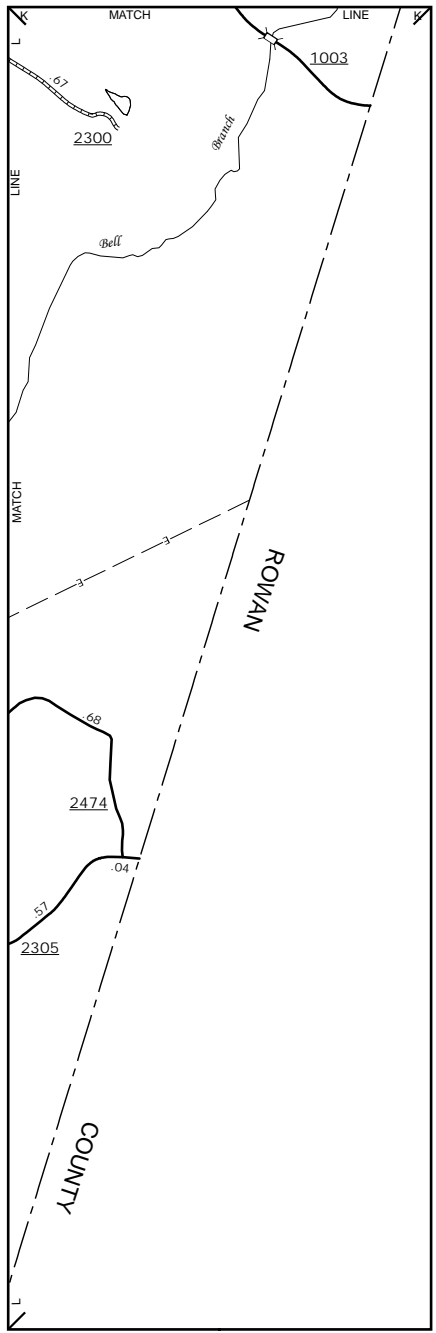
The Mapping Section's goal is to provide the most accurate and current information possible. Map data is compiled from numerous sources with varying degrees of accuracy. Map accuracy standards. As a result, the accuracy of the data provided may vary. This map is not intended to be used as a legal document. It is an important non-system road.

The information shown on this map was last updated in September, 2017. For additional information, visit <http://www.ncdot.gov/travel/infomapping> and click on Data Providers or contact us by phone at (819) 838-8480.

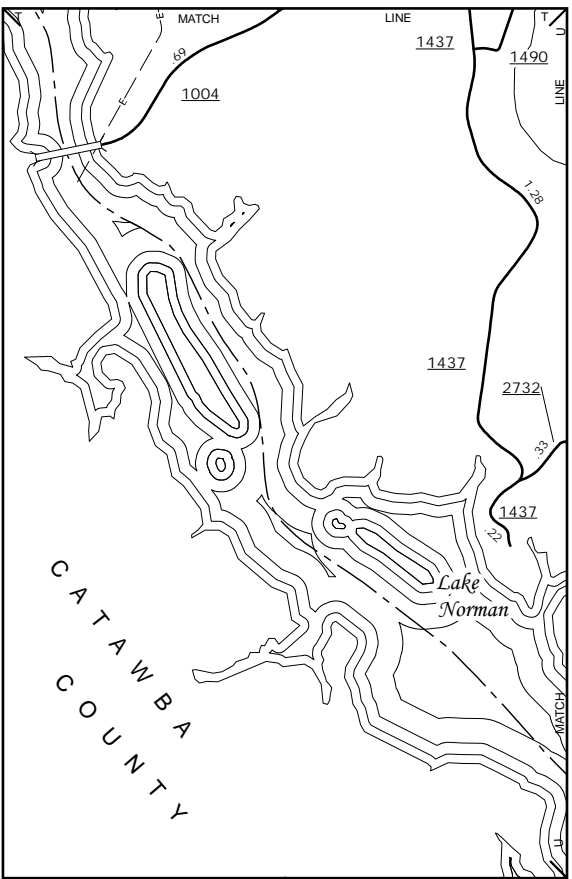
COPIES OF THIS MAP ARE AVAILABLE
FROM THE PUBLIC AT NOMINAL COST
ADDRESS:
N.C. DEPARTMENT OF TRANSPORTATION
MSAU - MAPPING SECTION
4809 BERT RD.
RALEIGH, NC 27608



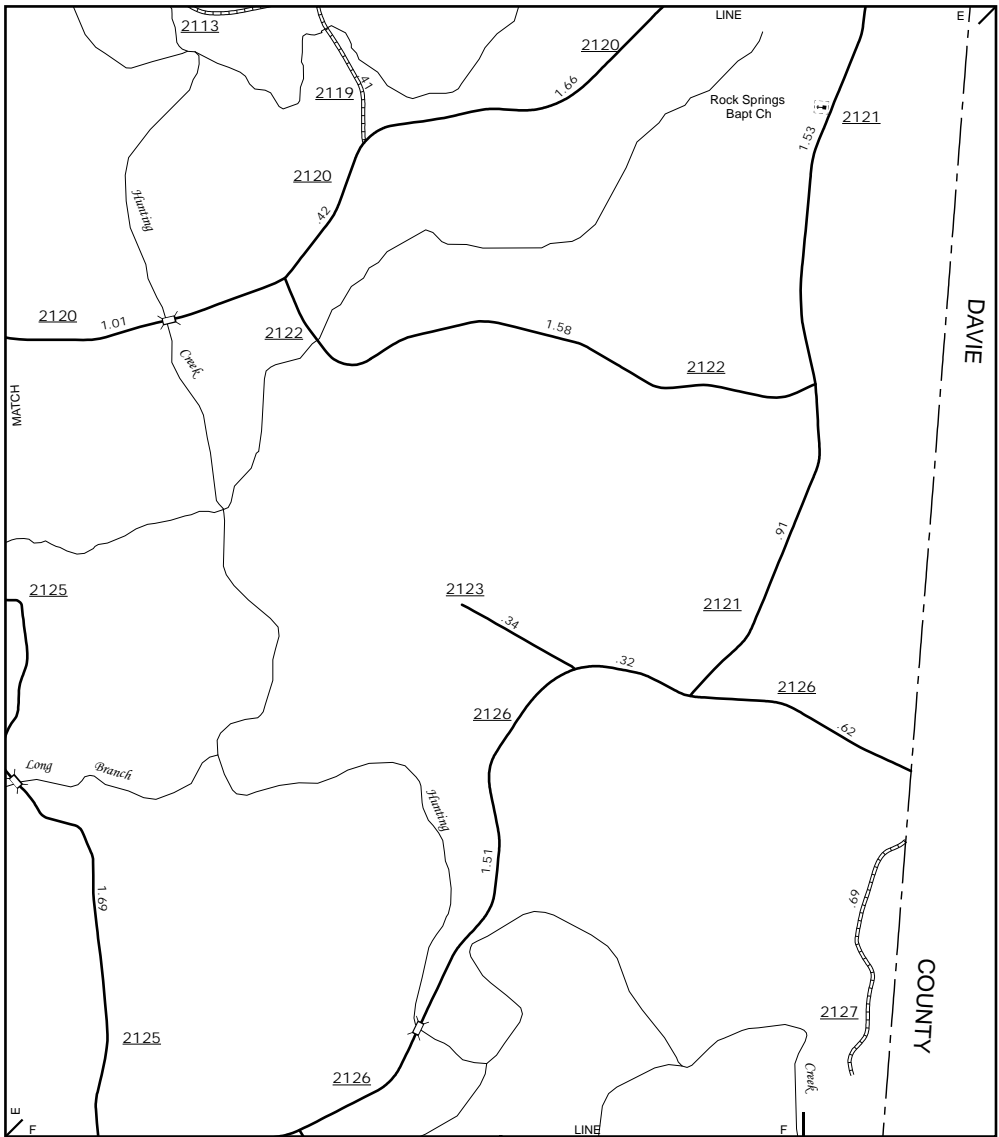
Sharon and Surrounding Area



Inset 2



Inset 3

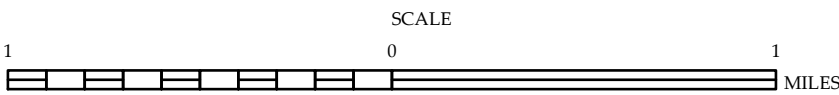


Rock Springs Bapt. Ch. Area

ENLARGED MUNICIPAL AND SUBURBAN AREAS

IREDELL COUNTY NORTH CAROLINA

PREPARED BY THE
NORTH CAROLINA DEPARTMENT OF TRANSPORTATION
MANAGEMENT SYSTEMS AND ASSESSMENT UNIT - MAPPING SECTION
IN COOPERATION WITH THE
U.S. DEPARTMENT OF TRANSPORTATION
FEDERAL HIGHWAY ADMINISTRATION



10,000 FOOT GRID BASED ON NORTH CAROLINA PLANE COORDINATE SYSTEM
LAMBERT CONFORMAL CONIC PROJECTION