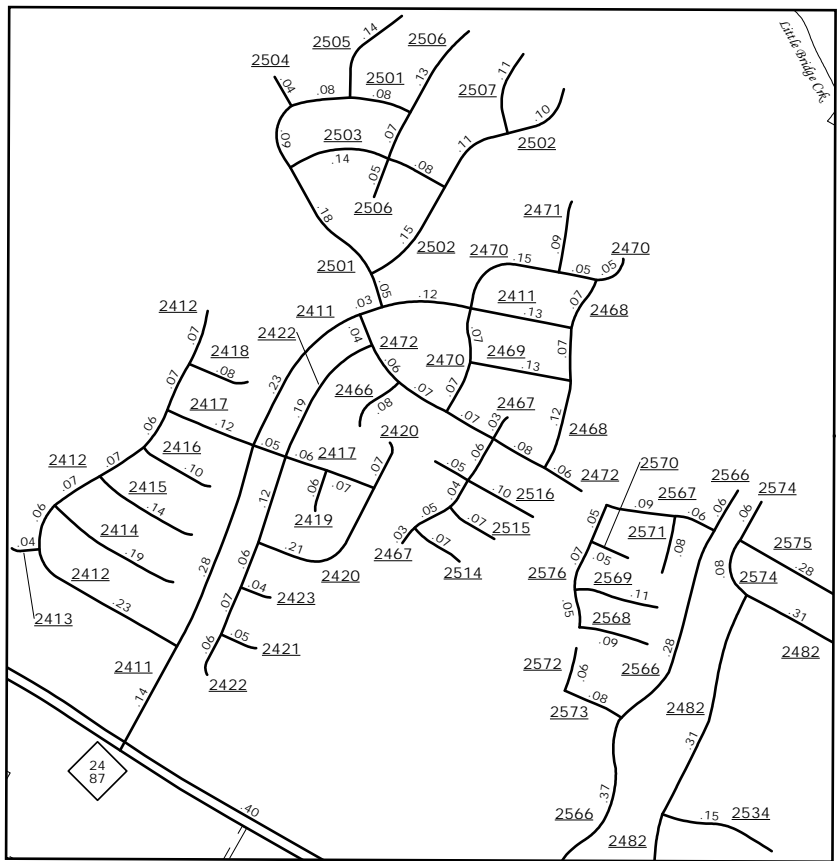
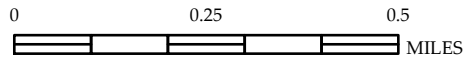


The Mapping Section's goal is to provide the most accurate and current information possible. Map data is compiled from numerous sources including aerial photography, ground surveys, and other reliable information. While every effort is made to ensure the accuracy of the information, the user assumes all responsibility for the use of the information. For more information, visit <http://www.ncdot.gov/transportation/mapping> and click on Data Providers or contact us by phone at (919) 835-8480.

COPIES OF THIS MAP ARE AVAILABLE
AT A PUBLIC INFORMATION COST
ADDRESS:
N.C. DEPARTMENT OF TRANSPORTATION
MSAU-MAPPING SECTION
4809 BERNI RD.
COLUMBIANA NC 27838



Northridge

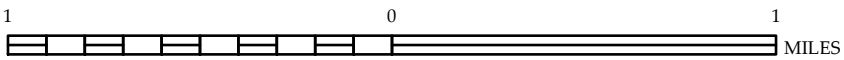


ENLARGED MUNICIPAL AND SUBURBAN AREAS

HARNETT COUNTY NORTH CAROLINA

PREPARED BY THE
NORTH CAROLINA DEPARTMENT OF TRANSPORTATION
MANAGEMENT SYSTEMS AND ASSESSMENTS UNIT - MAPPING SECTION
IN COOPERATION WITH THE
U.S. DEPARTMENT OF TRANSPORTATION
FEDERAL HIGHWAY ADMINISTRATION

SCALE



10,000 FOOT GRID BASED ON NORTH CAROLINA PLANE COORDINATE SYSTEM
LAMBERT CONFORMAL CONIC PROJECTION

SHEET 6 OF 6