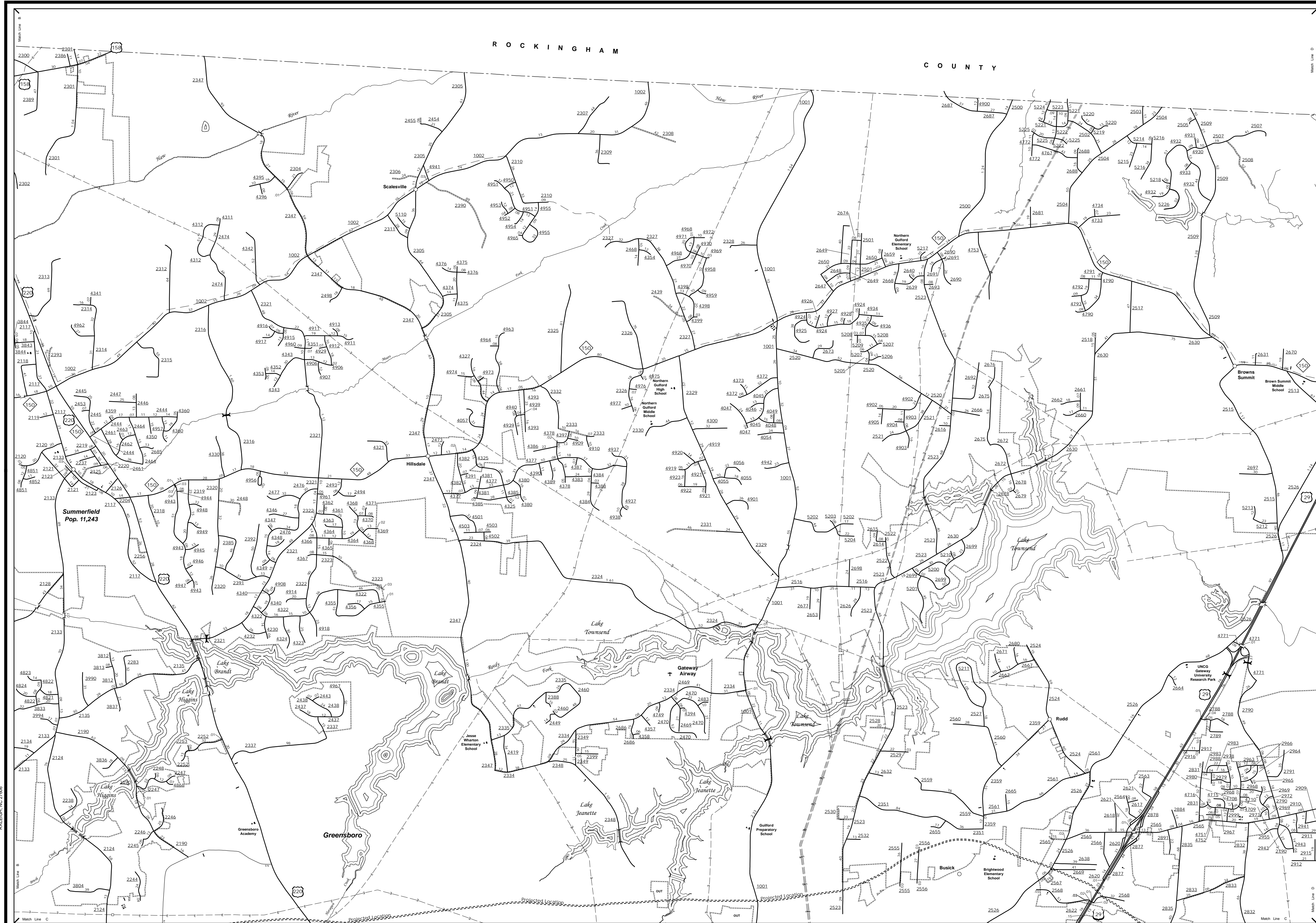


The Mapping Section's goal is to provide the most accurate and current information possible. Map data is compiled from various sources including aerial photography, ground surveys, and other reliable sources. The accuracy of the information is not guaranteed. The map is for informational purposes only. For additional information, visit <http://www.ncdot.gov/transportation/mapping>, and click on Data Providers or contact us by phone at (919) 835-4480.

COPIES OF THIS MAP ARE AVAILABLE  
FOR PUBLIC USE AT NO CHARGE.  
N.C. DEPARTMENT OF TRANSPORTATION  
MAPPING SECTION  
4800 BERNI, RD.  
COLUMBIANA, NC 27838



Summerfield

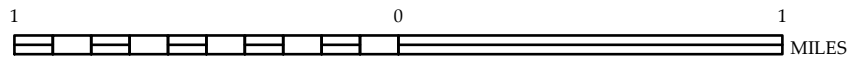


ENLARGED MUNICIPAL AND SUBURBAN AREAS

## GUILFORD COUNTY NORTH CAROLINA

PREPARED BY THE  
NORTH CAROLINA DEPARTMENT OF TRANSPORTATION  
MANAGEMENT SYSTEMS AND ASSESSMENTS UNIT - MAPPING SECTION  
IN COOPERATION WITH THE  
U.S. DEPARTMENT OF TRANSPORTATION  
FEDERAL HIGHWAY ADMINISTRATION

SCALE



10,000 FOOT GRID BASED ON NORTH CAROLINA PLANE COORDINATE SYSTEM  
LAMBERT CONFORMAL CONIC PROJECTION

SHEET 3 OF 10