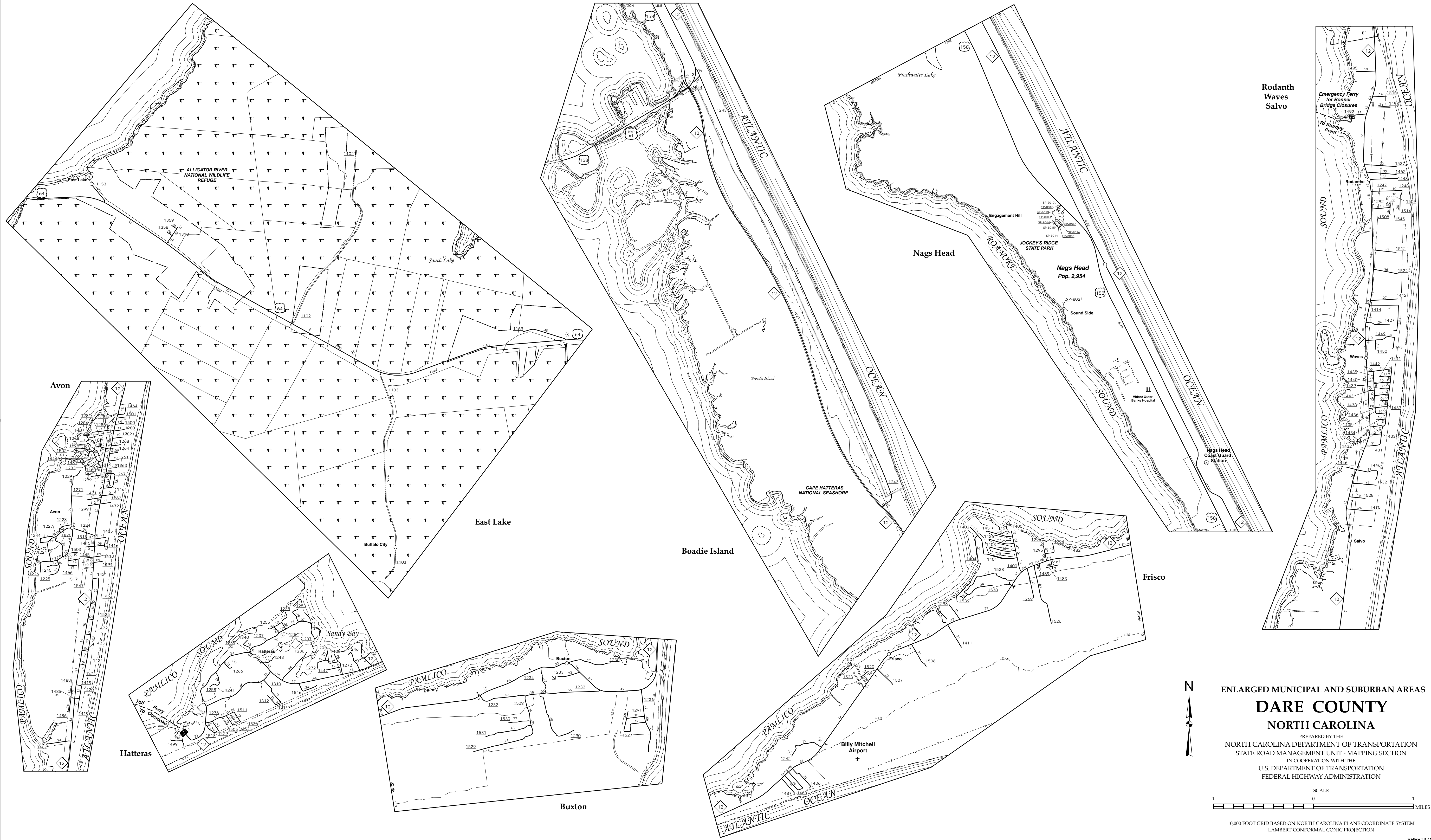


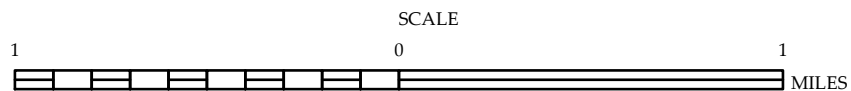
The Mapping Section's goal is to provide the most accurate and current information possible. Map data is compiled from numerous sources with varying degrees of accuracy. Map accuracy standards. As a result, the accuracy of the data provided may vary. This map includes information that is not intended to be used as an important non-system road.

The information shown on this map was last updated in September, 2017. For additional information, visit <http://www.dco.nc.gov/travel/battleground> and click on Data Providers or contact us by phone at (919) 830-4440.

COPIES OF THIS MAP ARE AVAILABLE
FOR PURCHASE AT A PUBLIC AT NOMINAL COST.
ADDRESS: N.C. DEPARTMENT OF TRANSPORTATION
SKAU - MAPPING SECTION
4809 BERT RD.
RALEIGH, NC 27609



ENLARGED MUNICIPAL AND SUBURBAN AREAS
DARE COUNTY
NORTH CAROLINA
PREPARED BY THE
NORTH CAROLINA DEPARTMENT OF TRANSPORTATION
STATE ROAD MANAGEMENT UNIT - MAPPING SECTION
IN COOPERATION WITH THE
U.S. DEPARTMENT OF TRANSPORTATION
FEDERAL HIGHWAY ADMINISTRATION



10,000 FOOT GRID BASED ON NORTH CAROLINA PLANE COORDINATE SYSTEM
LAMBERT CONFORMAL CONIC PROJECTION