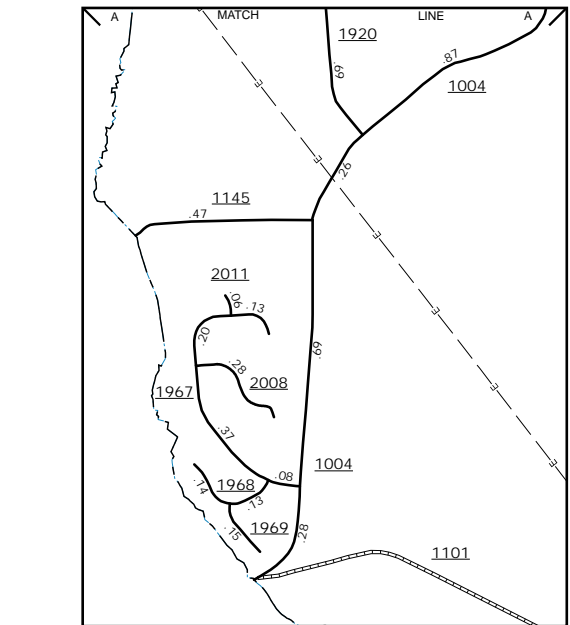
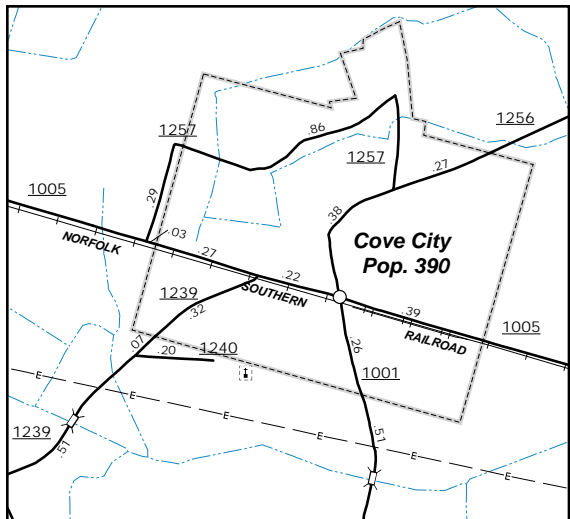
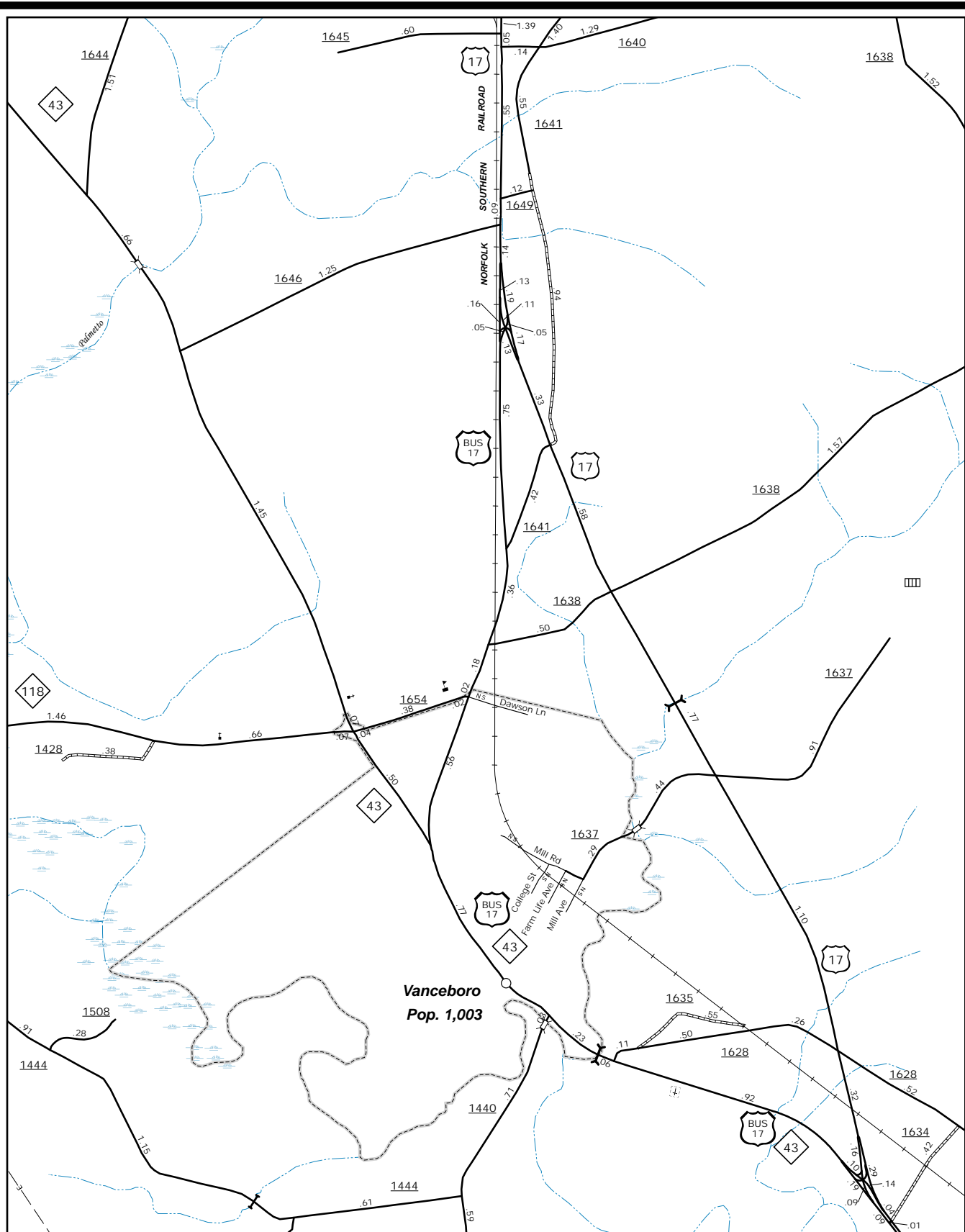
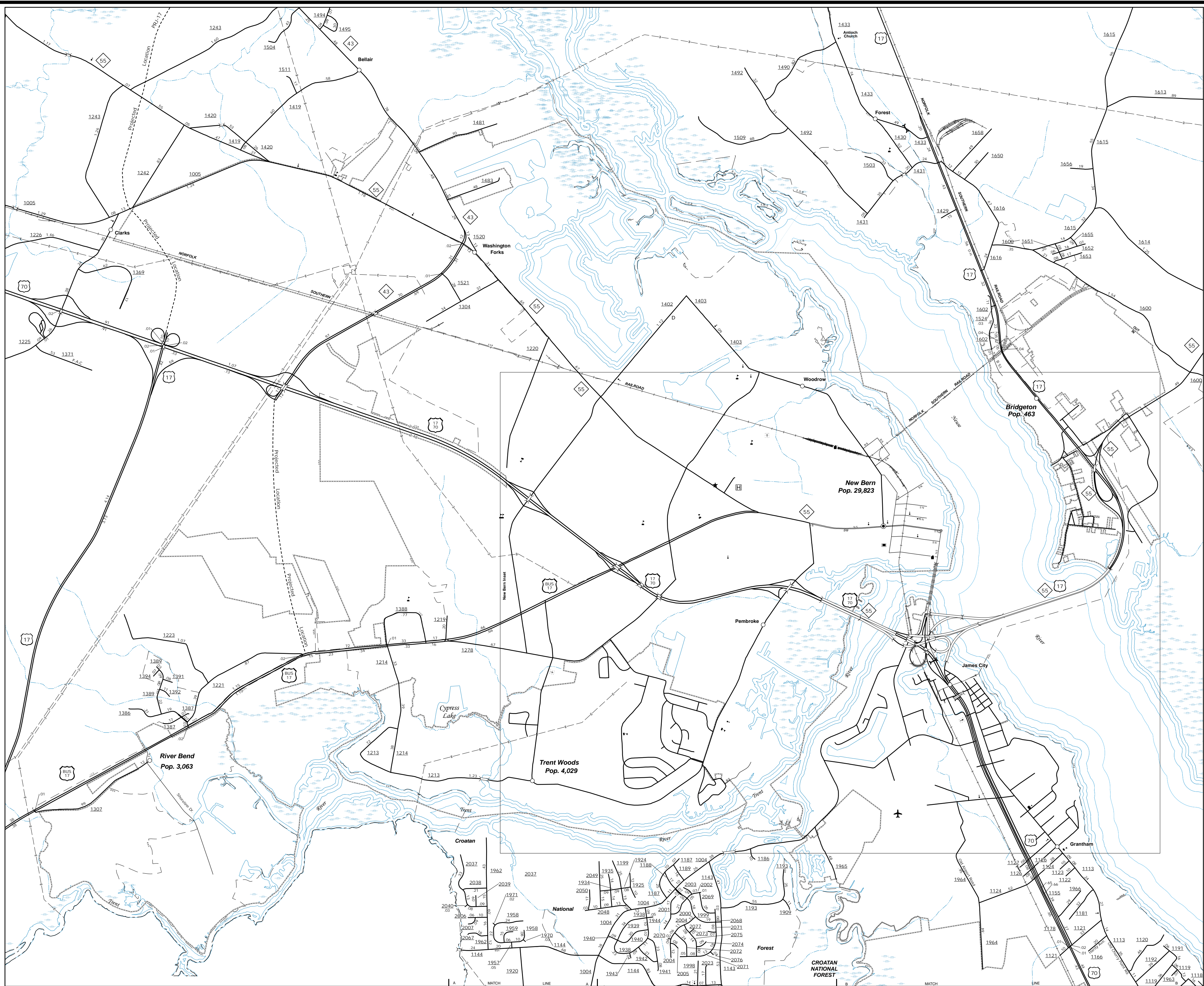


The Mapping Section's goal is to provide the most accurate and current information possible. Map data is compiled from numerous sources with varying degrees of accuracy. It may not reflect the most current information and the accuracy of the information is not guaranteed. For more information on the mapping process, please visit the website at <http://www.ncdot.gov/travel/infomaps/> and click on Data Providers or contact us by phone at (919) 835-8480.

COPIES OF THIS MAP ARE AVAILABLE
FOR PURCHASE AT A PUBLIC UTILITY NOMINAL COST
ADDRESS: N.C. DEPARTMENT OF TRANSPORTATION
MS&U - MAPPING SECTION
4809 BERT LEO
COLUMBUS, NC 28035



Vanceboro

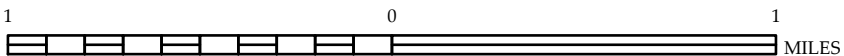
Cove City

ENLARGED MUNICIPAL AND SUBURBAN AREAS

Craven County North Carolina

PREPARED BY THE
NORTH CAROLINA DEPARTMENT OF TRANSPORTATION
MANAGEMENT SYSTEMS AND ASSESSMENTS UNIT - MAPPING SECTION
IN COOPERATION WITH THE
U.S. DEPARTMENT OF TRANSPORTATION
FEDERAL HIGHWAY ADMINISTRATION

SCALE



10,000 FOOT GRID BASED ON NORTH CAROLINA PLANE COORDINATE SYSTEM
LAMBERT CONFORMAL CONIC PROJECTION

SHEET 2 OF 4