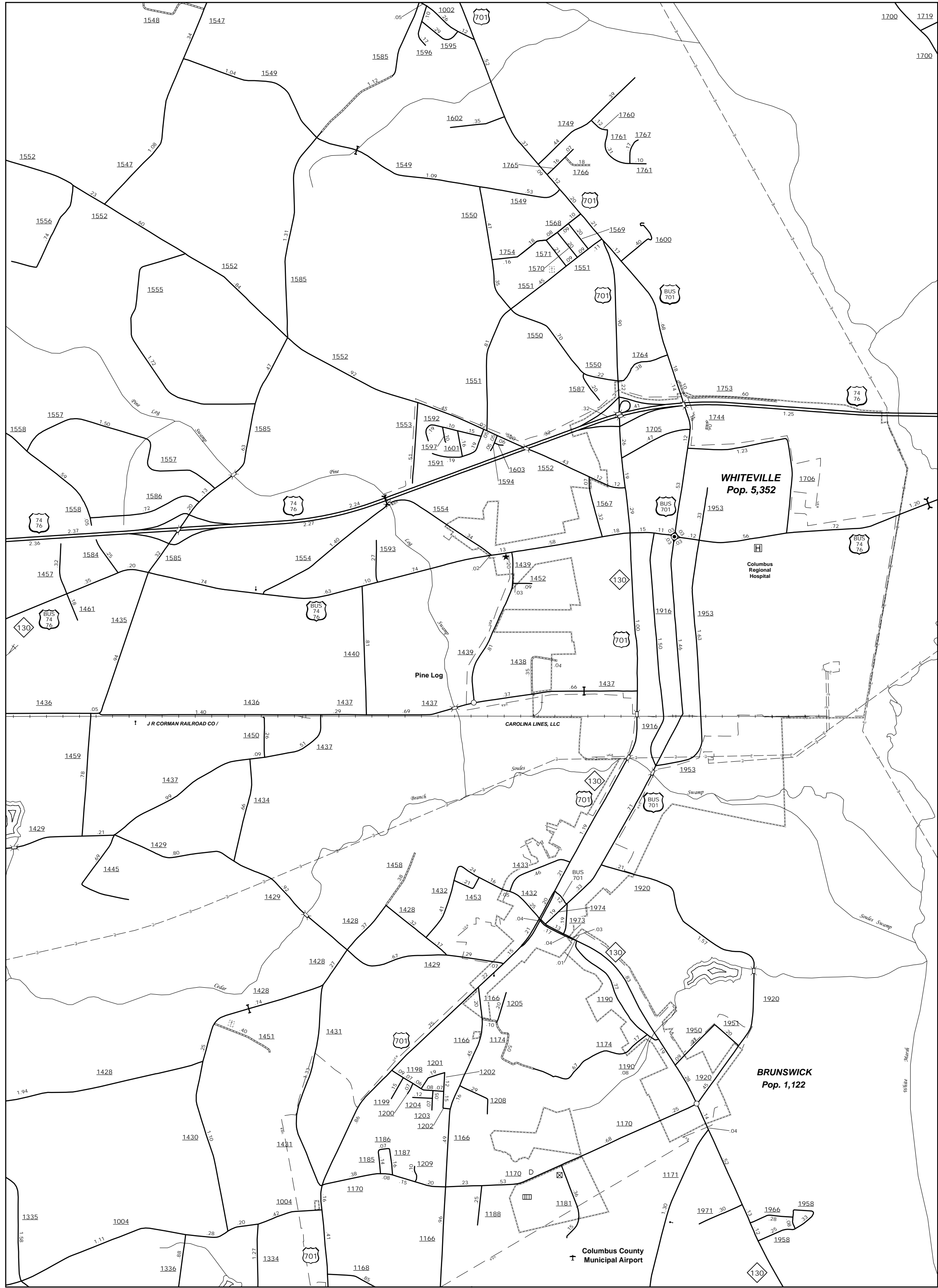
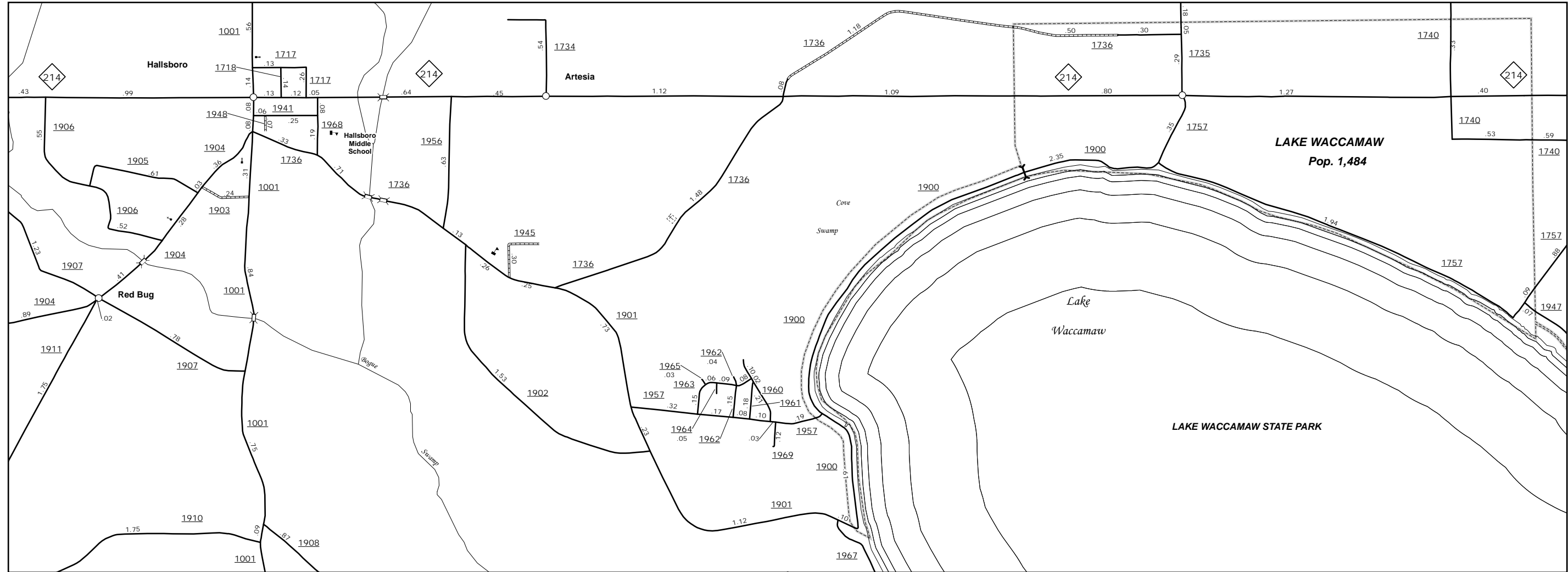


The Mapping Section's goal is to provide the most accurate and current information possible. Map data is compiled from numerous sources including aerial photography, ground surveys, and other reliable sources. As a result, there may be minor discrepancies between this map and other maps or data sources. The Mapping Section is not responsible for any errors or omissions. For more information, visit <http://www.ncdot.gov/transportation/mapping> and click on Data Providers or contact us by phone at (919) 835-8480.

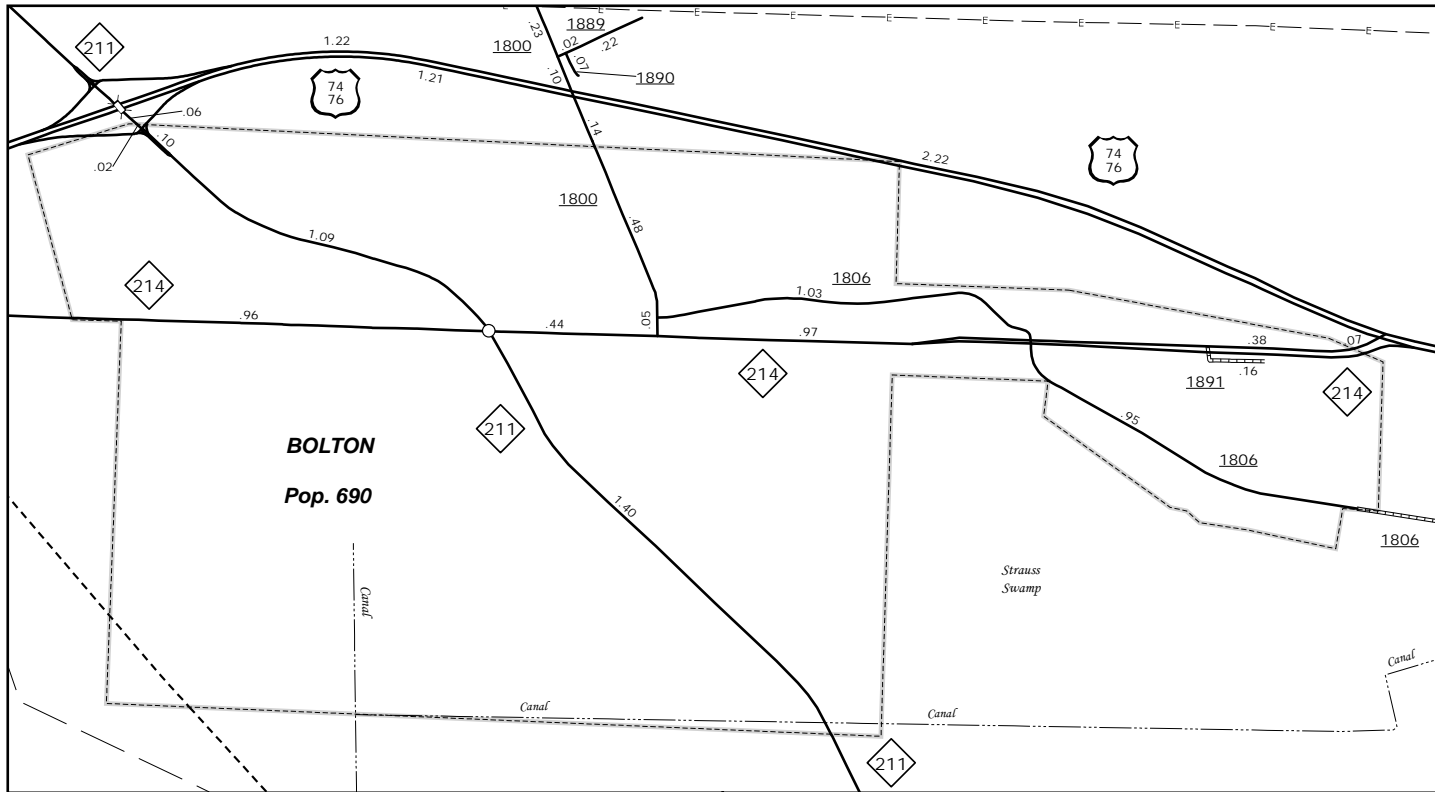
COPIES OF THIS MAP ARE AVAILABLE
FOR PURCHASE AT A NOMINAL COST
ADDRESS:
N.C. DEPARTMENT OF TRANSPORTATION
MSAU - MAPPING SECTION
4809 BERNI, RD.
COLUMBUS, NC 28906



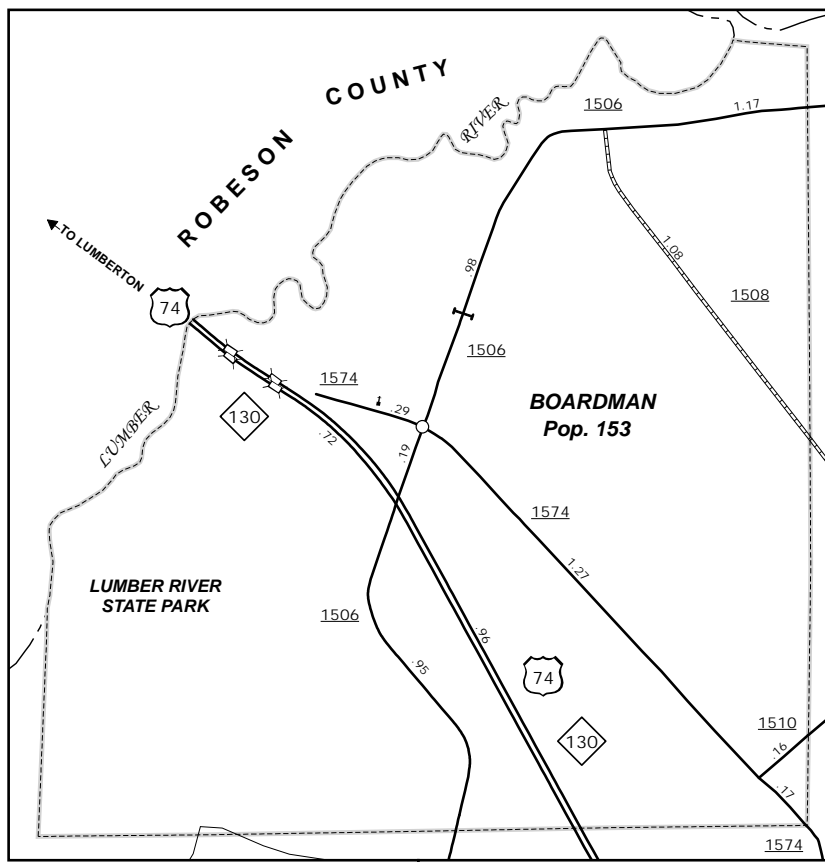
Whiteville



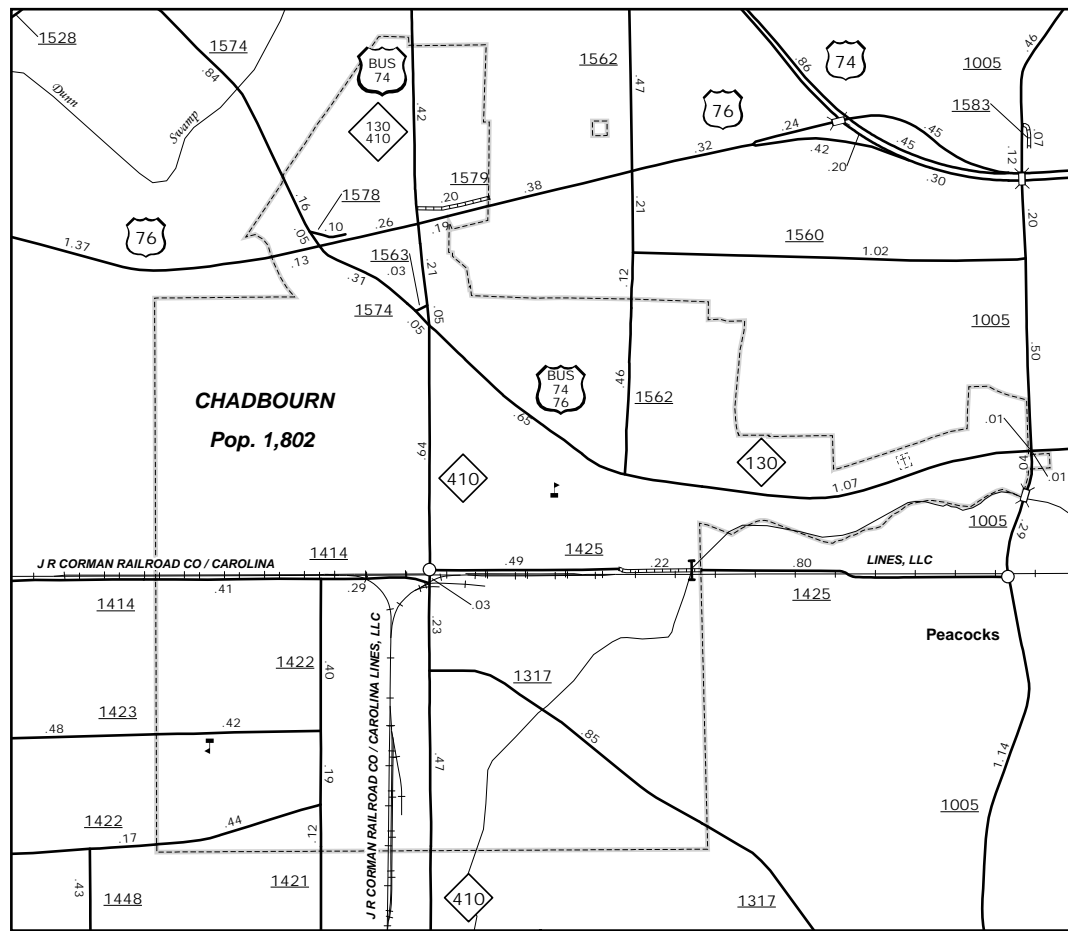
Lake Waccamaw



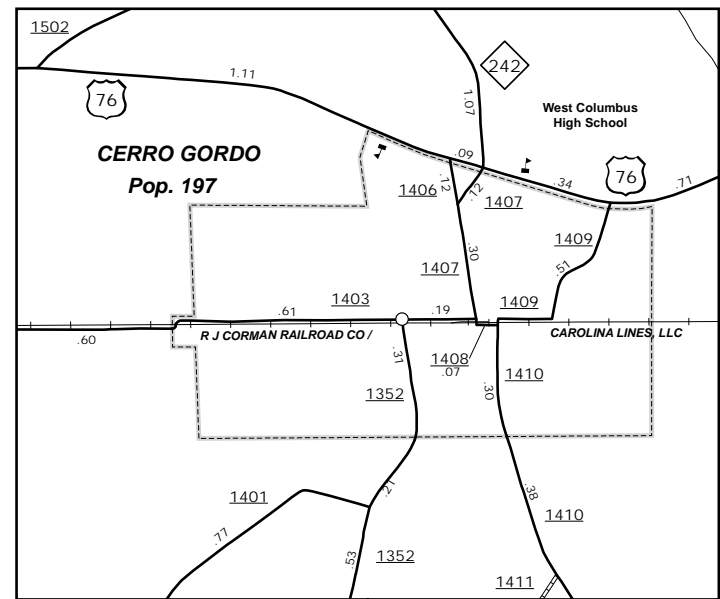
Bolton



Boardman



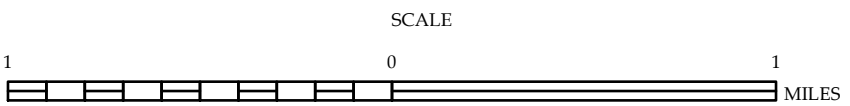
Chadbourne



Cerro Gordo

ENLARGED MUNICIPAL AND SUBURBAN AREAS COLUMBUS COUNTY NORTH CAROLINA

PREPARED BY THE
NORTH CAROLINA DEPARTMENT OF TRANSPORTATION
MANAGEMENT SYSTEMS AND ASSESSMENTS UNIT - MAPPING SECTION
IN COOPERATION WITH THE
U.S. DEPARTMENT OF TRANSPORTATION
FEDERAL HIGHWAY ADMINISTRATION



10,000 FOOT GRID BASED ON NORTH CAROLINA PLANE COORDINATE SYSTEM
LAMBERT CONFORMAL CONIC PROJECTION