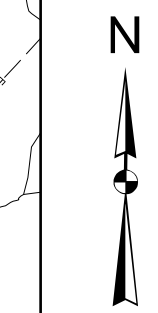
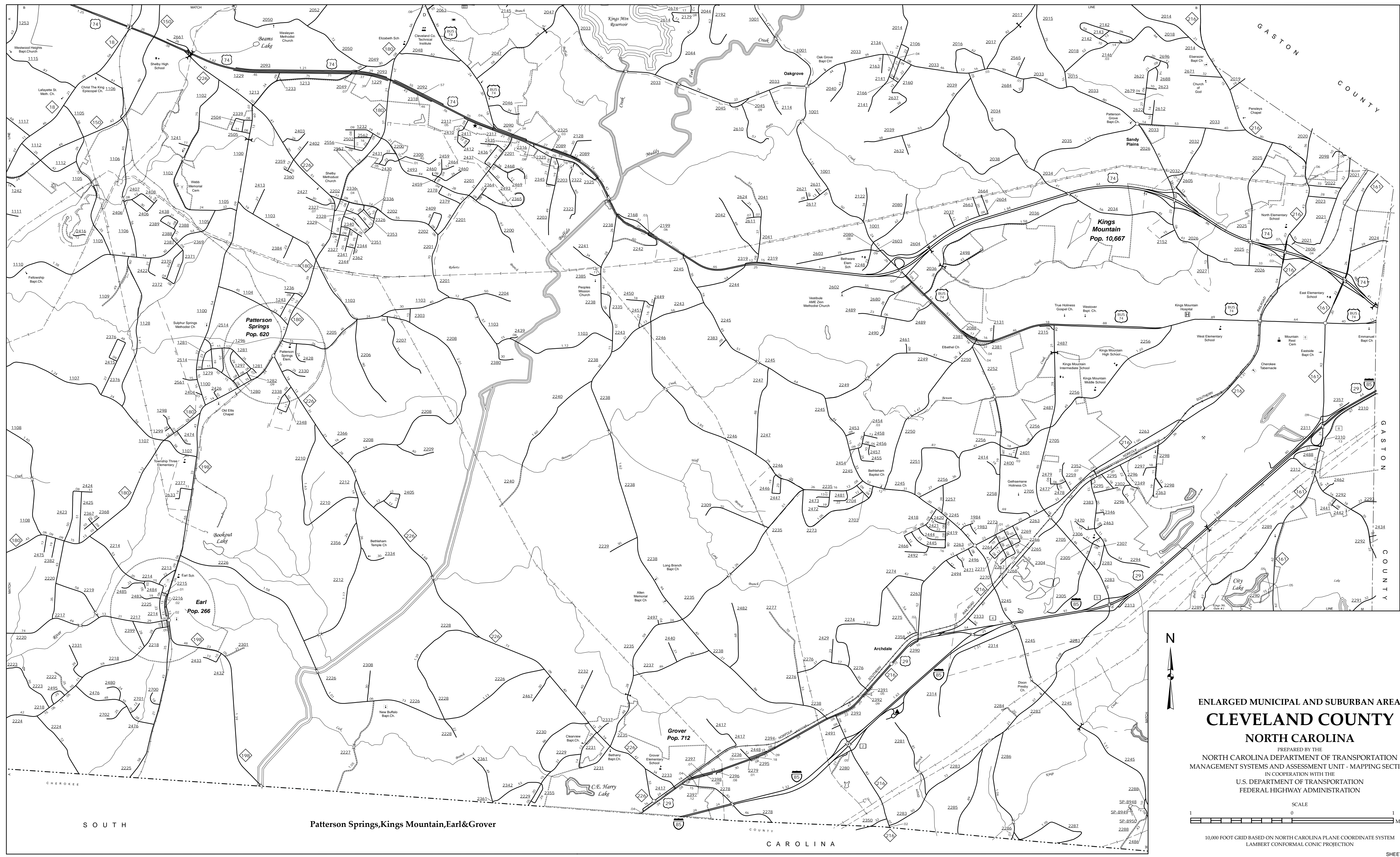


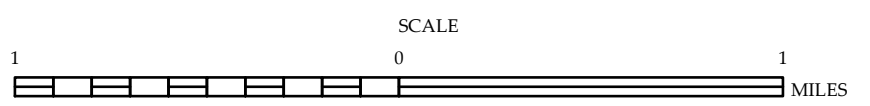
COPIES OF THIS MAP ARE AVAILABLE  
FOR PURCHASE AT A PUBLIC NOMINAL COST.  
ADDRESS: N.C. DEPARTMENT OF TRANSPORTATION  
MSAU - MAPPING SECTION  
4809 BERTHOLD  
COLUMBIANA, NC 27928

The Mapping Section's goal is to provide the most accurate and current information possible. Map data is compiled from various sources and is not guaranteed to be 100% accurate. As a result, the accuracy of the data presented on this map is not guaranteed. This map includes data from various sources and is not a substitute for a site visit. The information shown on this map was last updated in September, 2017. For additional information, visit <http://www.ncdot.gov/transportation/mapping> and click on Data Providers or contact us by phone at (919) 835-8480.



ENLARGED MUNICIPAL AND SUBURBAN AREAS  
**CLEVELAND COUNTY**  
NORTH CAROLINA

PREPARED BY THE  
NORTH CAROLINA DEPARTMENT OF TRANSPORTATION  
MANAGEMENT SYSTEMS AND ASSESSMENT UNIT - MAPPING SECTION  
IN COOPERATION WITH THE  
U.S. DEPARTMENT OF TRANSPORTATION  
FEDERAL HIGHWAY ADMINISTRATION



10,000 FOOT GRID BASED ON NORTH CAROLINA PLANE COORDINATE SYSTEM  
LAMBERT CONFORMAL CONIC PROJECTION

SOUTH

Patterson Springs, Kings Mountain, Earl & Grover

CAROLINA