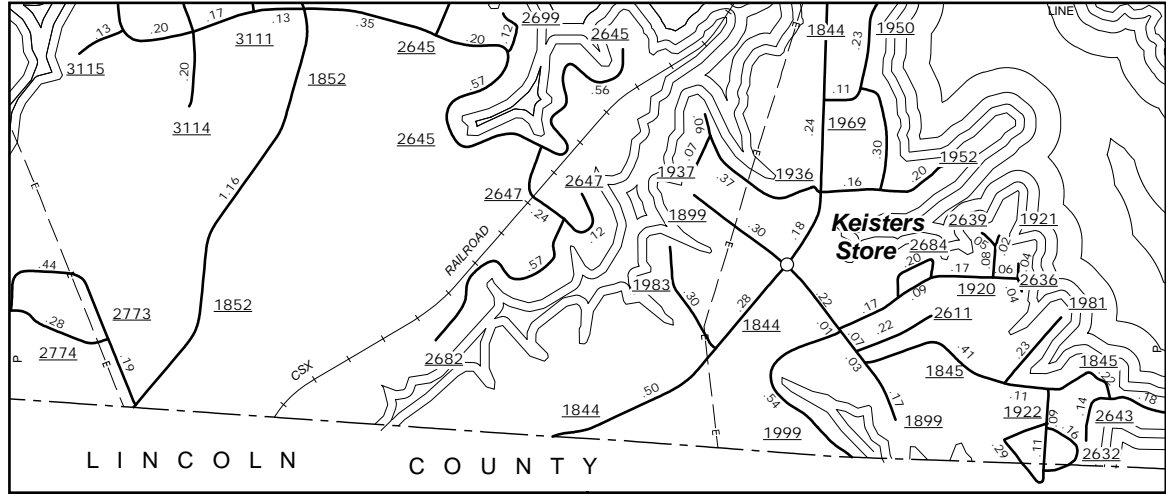
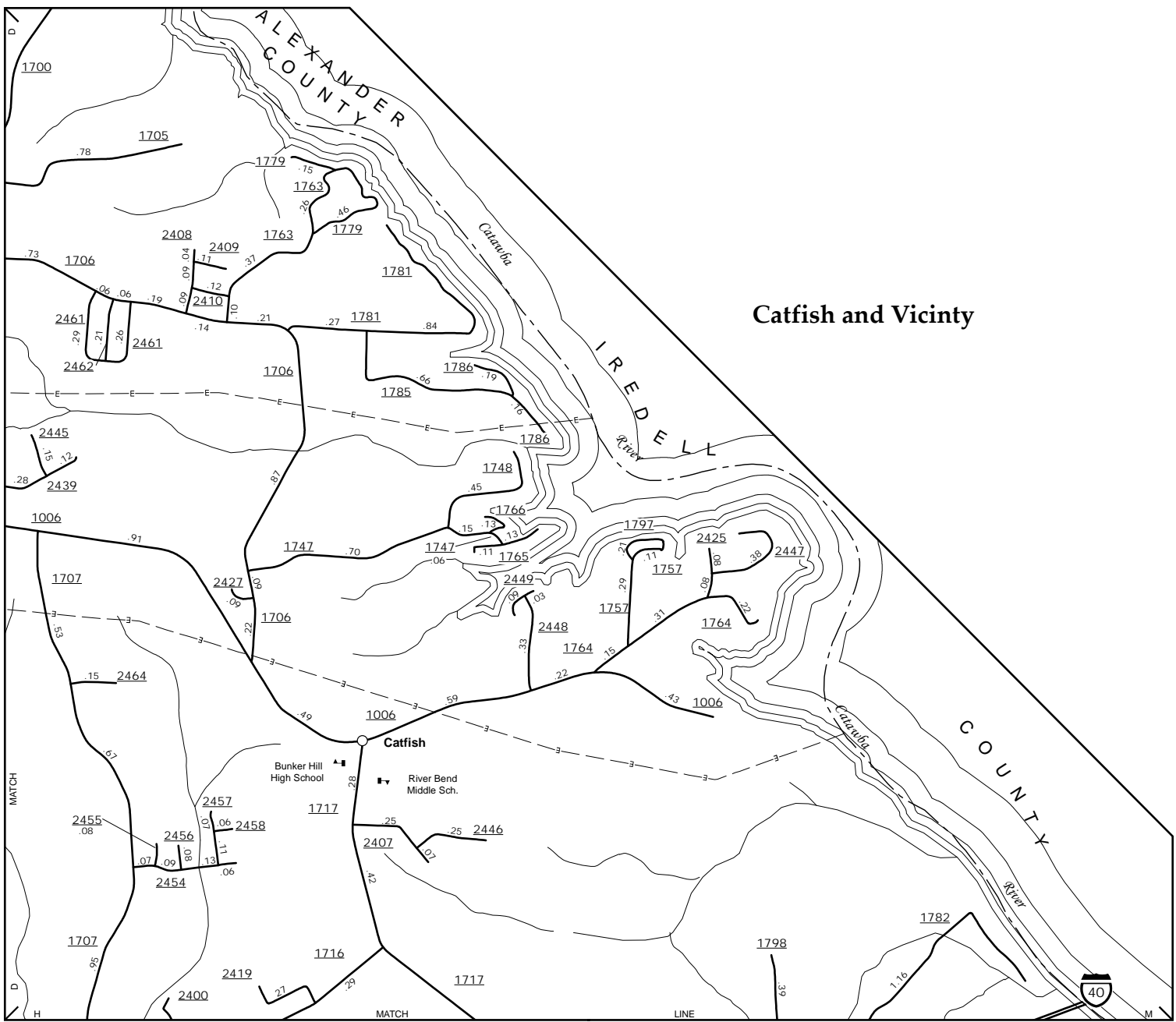


The Mapping Section's goal is to provide the most accurate and current information possible. Map data is compiled from numerous sources with varying degrees of accuracy. As a result, map accuracy standards are not uniform. The information shown on this map was last updated in September, 2017. For additional information, visit <http://www.dcd.state.nc.gov/transportation> and click on Data Providers or contact us by phone at (919) 835-4440.

COPIES OF THIS MAP ARE AVAILABLE
FROM THE
N.C. DEPARTMENT OF TRANSPORTATION
ADDRESS:
MS&U - MAPPING SECTION
4809 BERT RD.
CARRYSBORO, NC 28586



Keister Store and Vicinity

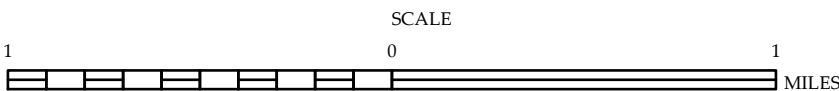


Catfish and Vicinity

Catawba River & Lake Norman

ENLARGED MUNICIPAL AND SUBURBAN AREAS
CATAWBA COUNTY
NORTH CAROLINA

PREPARED BY THE
NORTH CAROLINA DEPARTMENT OF TRANSPORTATION
MANAGEMENT SYSTEMS AND ASSESSMENT UNIT - MAPPING SECTION
IN COOPERATION WITH THE
U.S. DEPARTMENT OF TRANSPORTATION
FEDERAL HIGHWAY ADMINISTRATION



10,000 FOOT GRID BASED ON NORTH CAROLINA PLANE COORDINATE SYSTEM
LAMBERT CONFORMAL CONIC PROJECTION