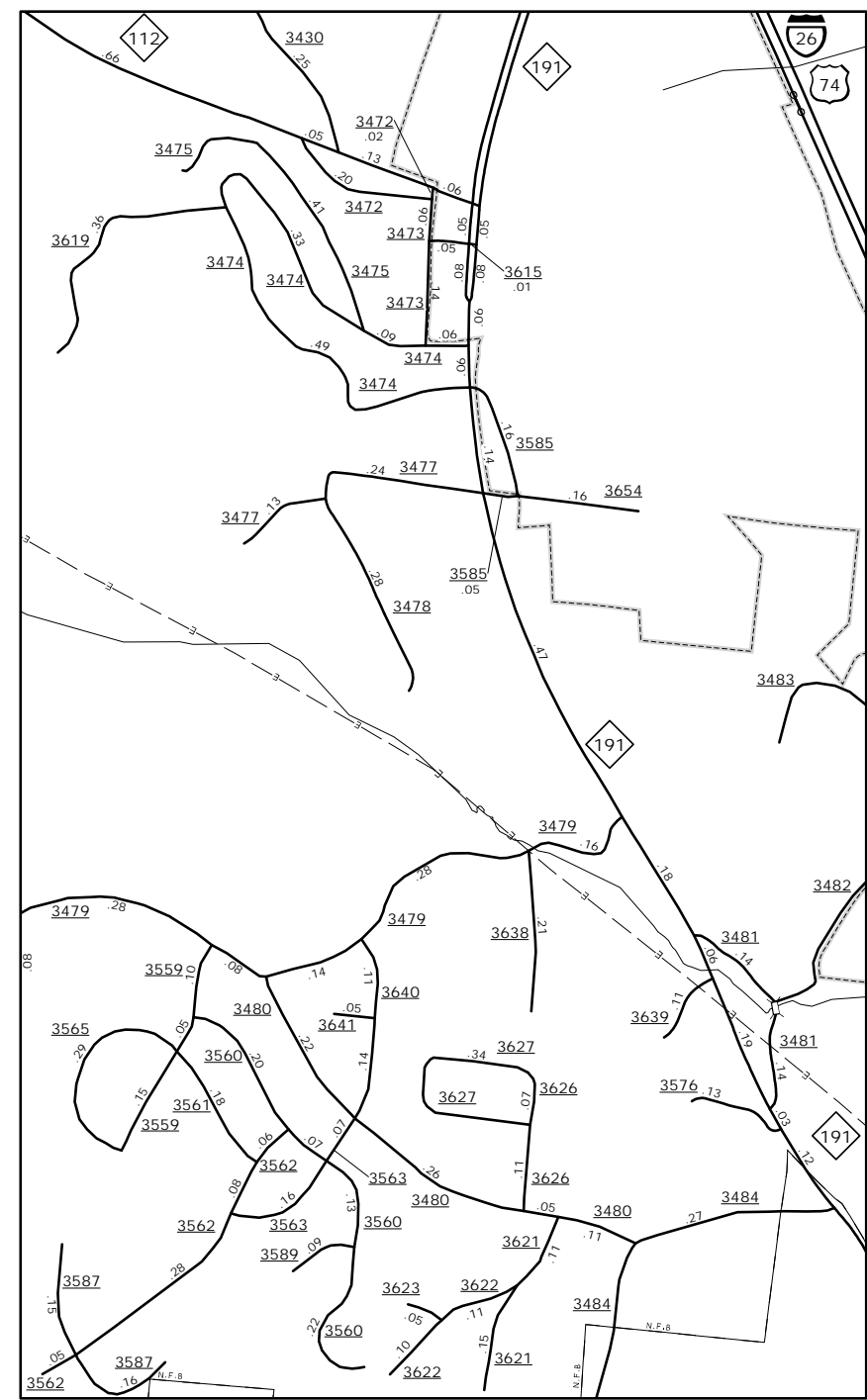
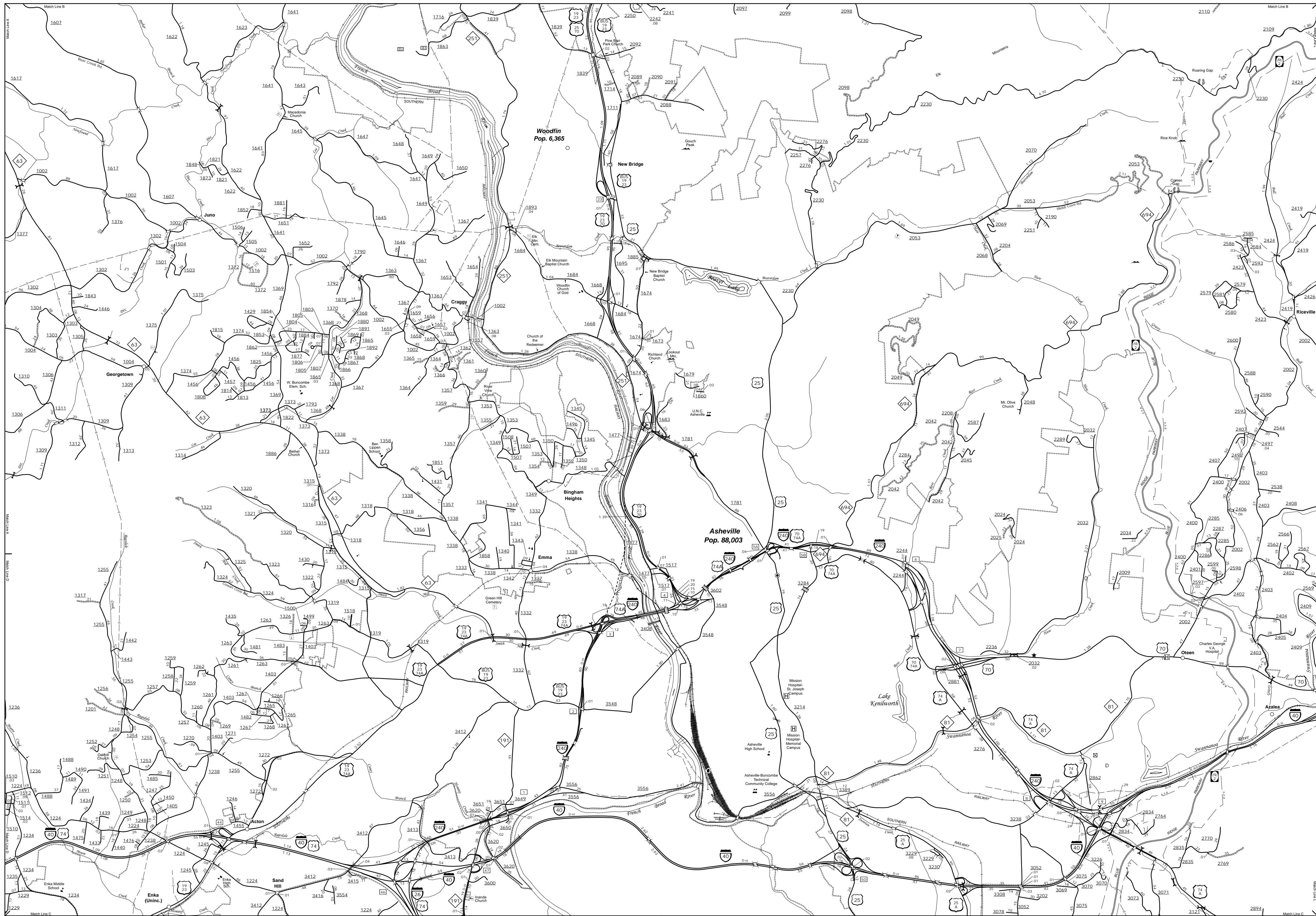


The Mapping Section's goal is to provide the most accurate and current information possible. Map data is compiled from numerous sources and is subject to change. The mapping section is responsible for the accuracy of the information presented on this map. The mapping section is not responsible for the accuracy of information presented on other maps. The mapping section is not responsible for the accuracy of information presented on other maps. The mapping section is not responsible for the accuracy of information presented on other maps.

COPIES OF THIS MAP ARE AVAILABLE  
FROM THE NORTH CAROLINA DEPARTMENT OF TRANSPORTATION  
ADDRESS: 4809 BERNAL RD.  
Raleigh, NC 27609



NC 112 & NC 191 Area  
0 0.25 0.5  
MILES

Asheville and Vicinity



# ENLARGED MUNICIPAL AND SUBURBAN AREAS BUNCOMBE COUNTY NORTH CAROLINA

PREPARED BY THE  
NORTH CAROLINA DEPARTMENT OF TRANSPORTATION  
MANAGEMENT SYSTEMS AND ASSESSMENTS UNIT - MAPPING SECTION  
IN COOPERATION WITH THE  
U.S. DEPARTMENT OF TRANSPORTATION  
FEDERAL HIGHWAY ADMINISTRATION

SCALE  
1 0 1  
MILES

10,000 FOOT GRID BASED ON NORTH CAROLINA PLANE COORDINATE SYSTEM  
LAMBERT CONFORMAL CONIC PROJECTION

SHEET 2 OF 7