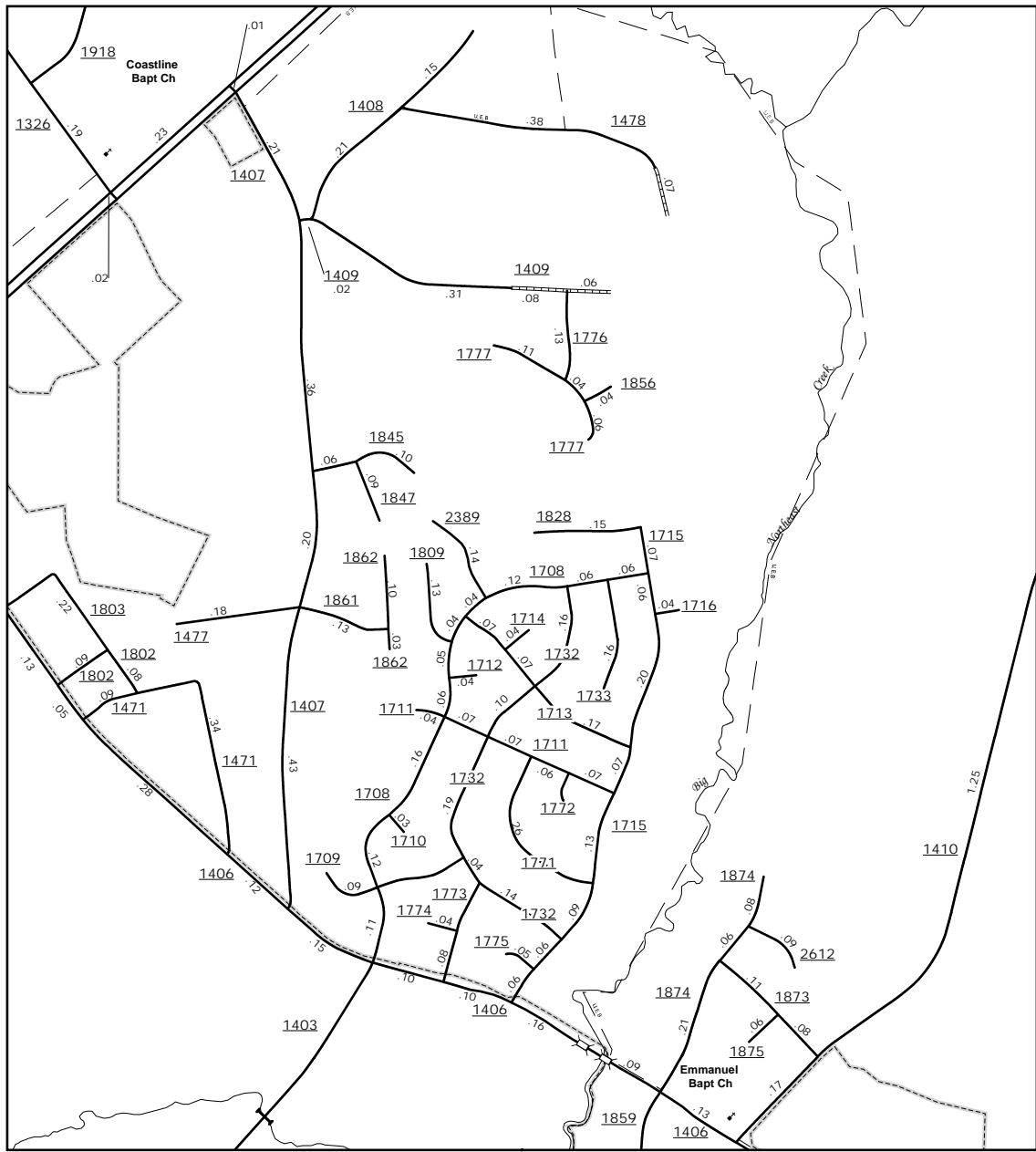


The MSAL's goal is to provide the most accurate and current information possible. Map data is compiled from numerous sources including aerial photography, ground surveys, and other data. As a result, there may be some discrepancies between the map and the actual ground conditions. The MSAL is not responsible for any errors or omissions. For additional information, visit <http://www.ncdot.gov/transportation/management-systems-and-assessment-unit-mapping-section>, and click on Data Providers or contact us at (810) 835-8460.

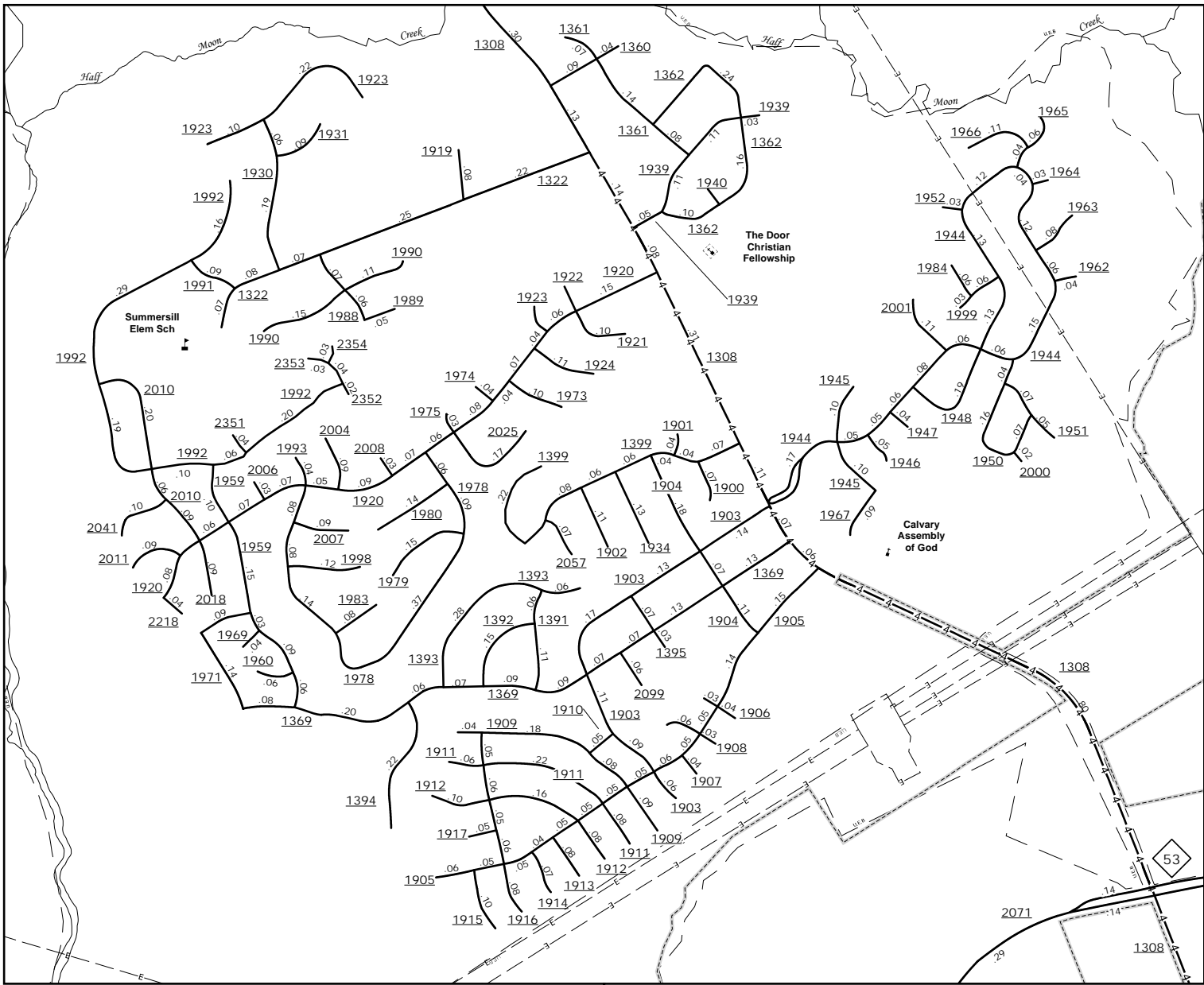
COPIES OF THIS MAP ARE AVAILABLE  
AT THE PUBLIC INFORMATION COST  
ADDRESS:  
N.C. DEPARTMENT OF TRANSPORTATION  
MSAU - MAPPING SECTION  
4809 BERN LEO  
COLUMBIA, NC 28038



Central Jacksonville



Jacksonville Country Club

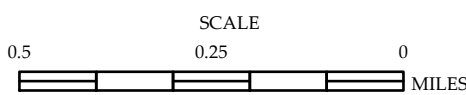


Northeast Jacksonville



ENLARGED MUNICIPAL AND SUBURBAN AREAS  
**ONSLOW COUNTY**  
**NORTH CAROLINA**

PREPARED BY THE  
NORTH CAROLINA DEPARTMENT OF TRANSPORTATION  
MANAGEMENT SYSTEMS AND ASSESSMENT UNIT - MAPPING SECTION  
IN COOPERATION WITH THE  
U.S. DEPARTMENT OF TRANSPORTATION  
FEDERAL HIGHWAY ADMINISTRATION



10,000 FOOT GRID BASED ON NORTH CAROLINA PLANE COORDINATE SYSTEM  
LAMBERT CONFORMAL CONIC PROJECTION