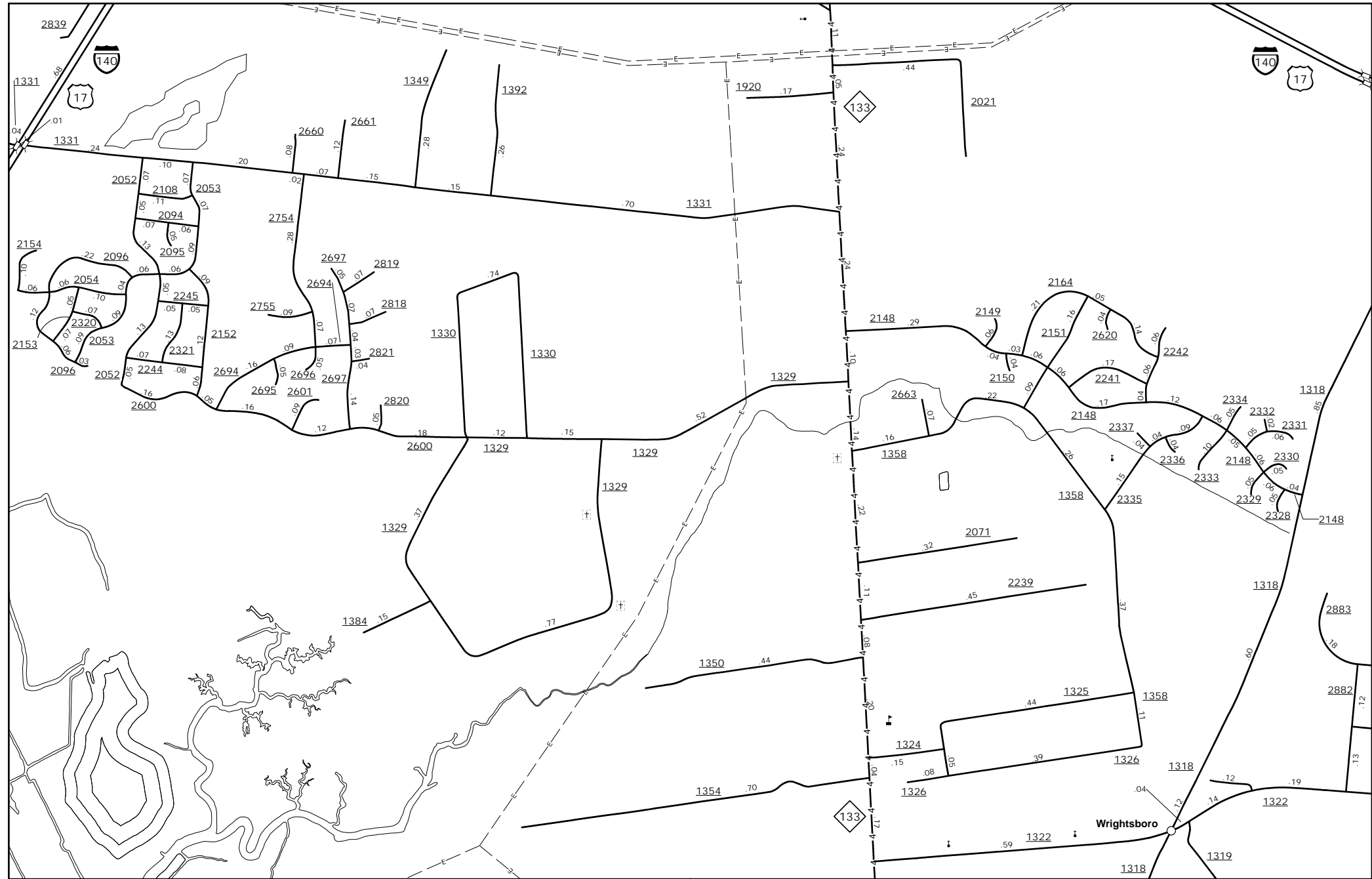
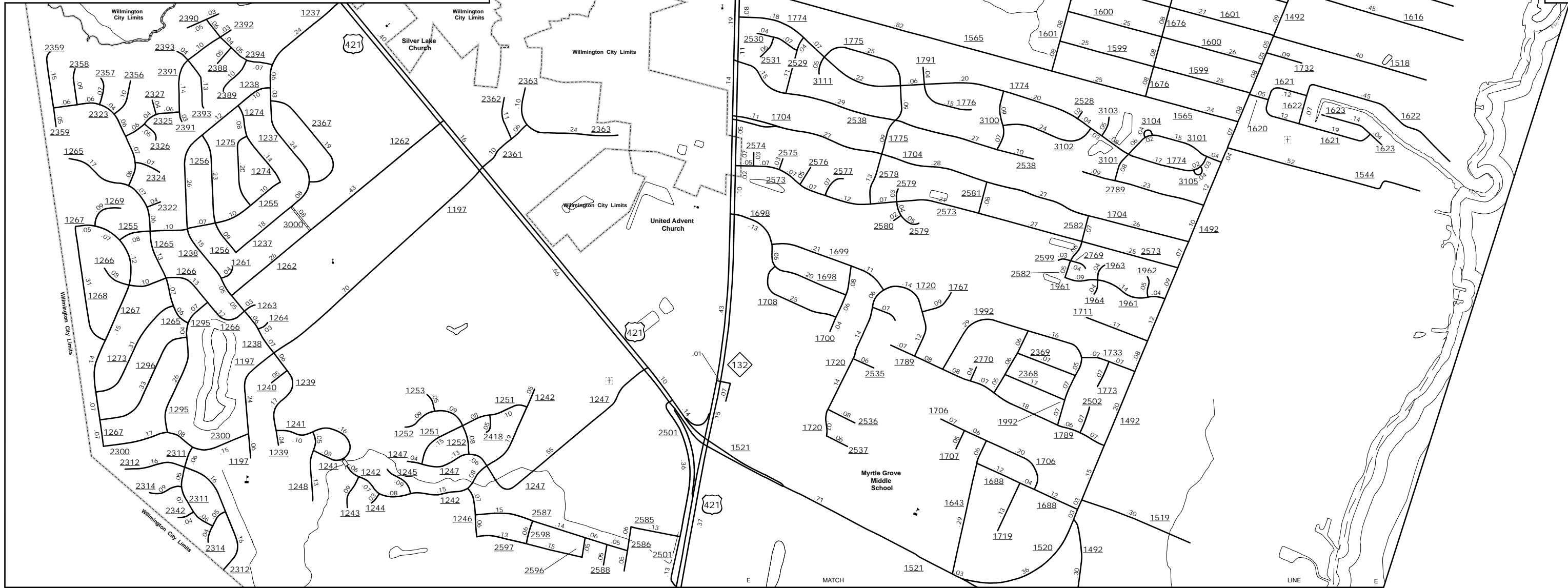


The MS&U's goal is to provide the most accurate and current information possible. Map data is compiled from numerous sources with varying degrees of accuracy and timeliness. As a result, some information may be outdated or incorrect. The MS&U is not responsible for any errors or omissions. The MS&U is not responsible for any damages or losses resulting from the use of this map. For additional information, visit <http://www.ncdot.gov/transportation/msau> and click on Data Providers or contact us at (919) 855-8480.

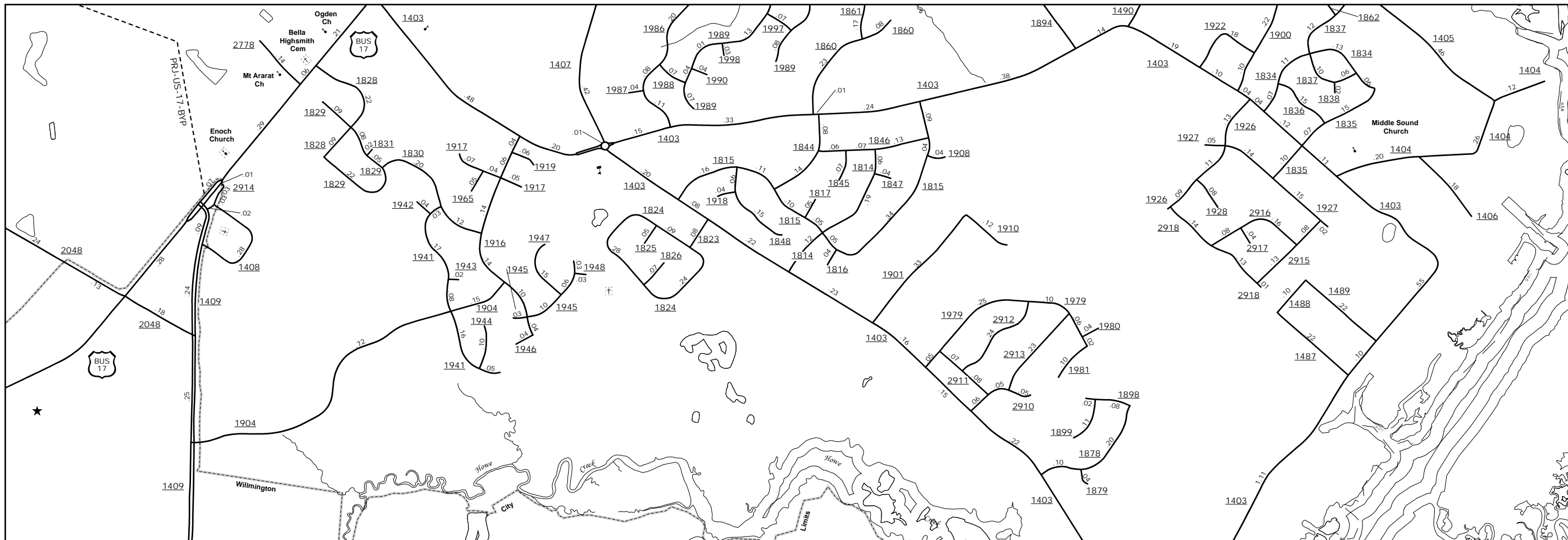
COPIES OF THIS MAP ARE AVAILABLE  
FOR THE PUBLIC AT NO ADDITIONAL COST.  
ADDRESS: N.C. DEPARTMENT OF TRANSPORTATION  
MS&U-MAPPING SECTION  
4809 BERN LEO  
Raleigh, NC 27609



Wrightsboro



Myrtle Grove Vicinity

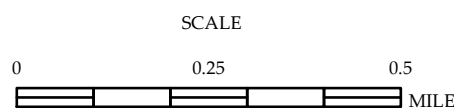


Ogden Elementary Area



# ENLARGED MUNICIPAL AND SUBURBAN AREAS NEW HANOVER COUNTY NORTH CAROLINA

PREPARED BY THE  
NORTH CAROLINA DEPARTMENT OF TRANSPORTATION  
MANAGEMENT SYSTEMS AND ASSESSMENT UNIT - MAPPING SECTION  
IN COOPERATION WITH THE  
U.S. DEPARTMENT OF TRANSPORTATION  
FEDERAL HIGHWAY ADMINISTRATION



10,000 FOOT GRID BASED ON NORTH CAROLINA PLANE COORDINATE SYSTEM  
LAMBERT CONFORMAL CONIC PROJECTION