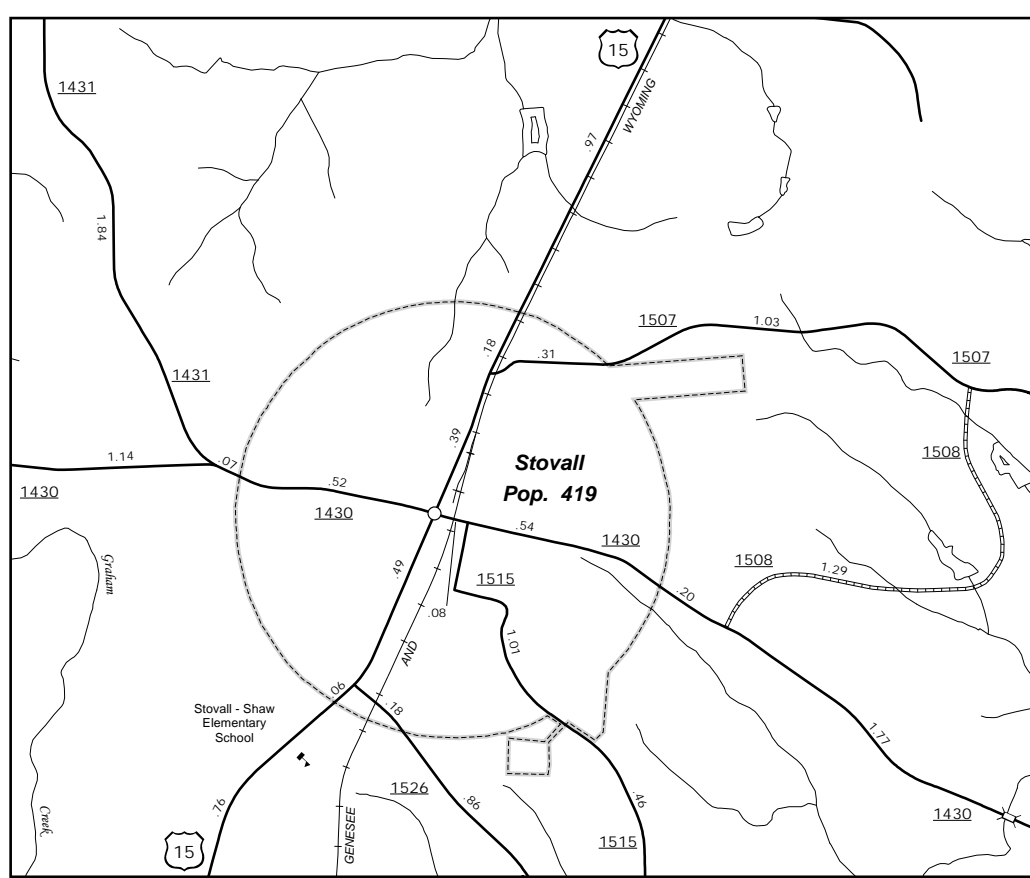
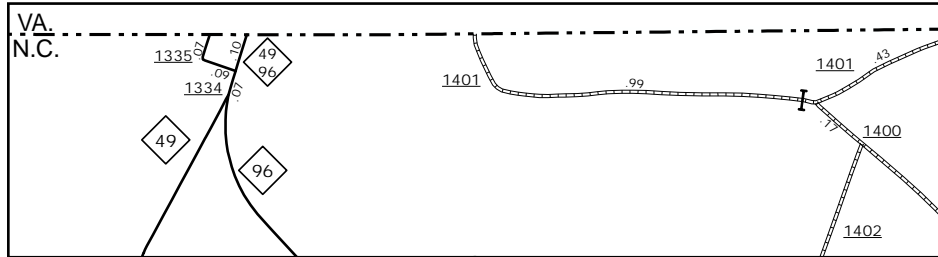
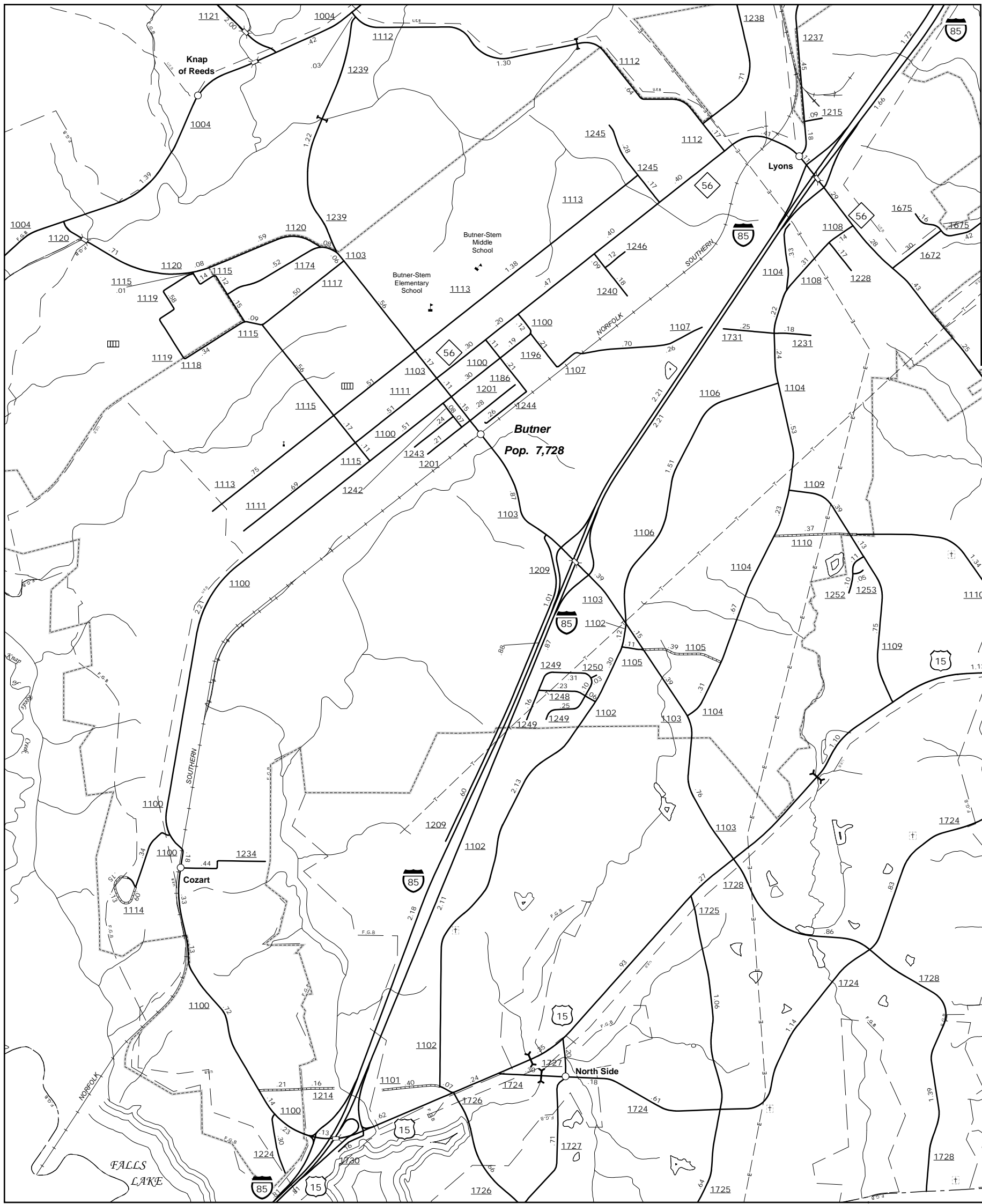


The MS&U's goal is to provide the most accurate and current information possible. Map data is compiled from numerous sources, varying in accuracy and timeliness. As a result, roads shown on this map may not reflect the current conditions on the ground. For the most current and accurate information, please contact the local planning and engineering department. For additional information, visit <http://www.ncdot.gov/transportation/MS&U/MS&U.aspx> and click on Data Provider or contact us at (819) 838-8482.

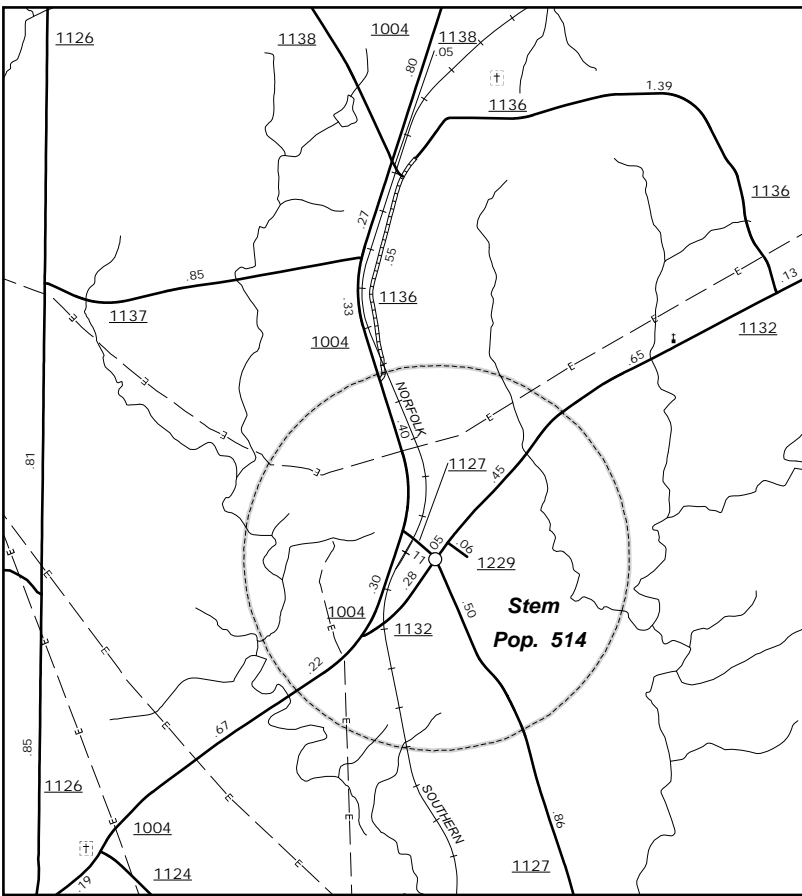
COPIES OF THIS MAP ARE AVAILABLE
FOR PURCHASE AT A PUBLIC COST.
ADDRESS:
N.C. DEPARTMENT OF TRANSPORTATION
MS&U - MAPPING SECTION
4809 BERN LANE
Raleigh, NC 27609



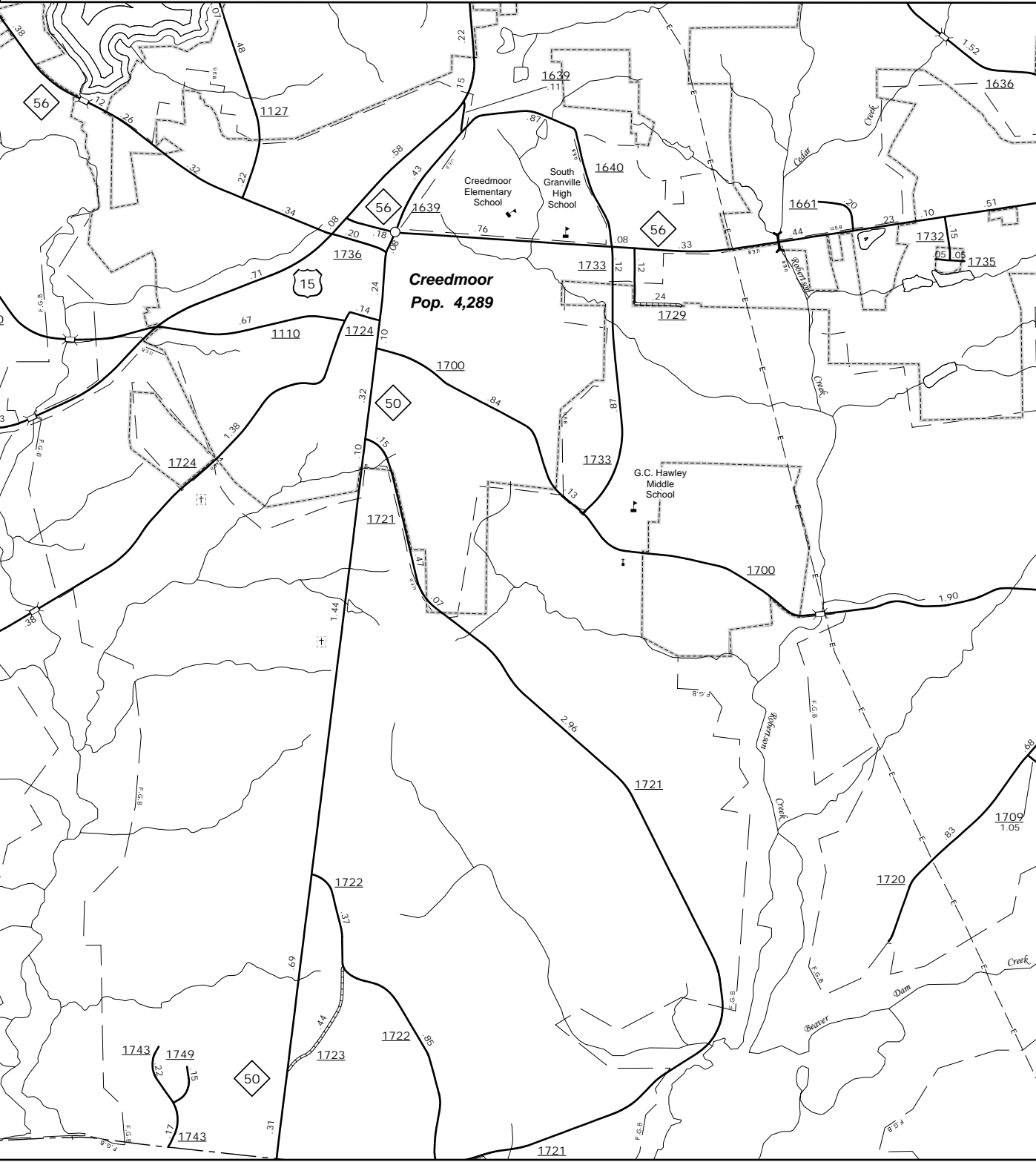
Stovall



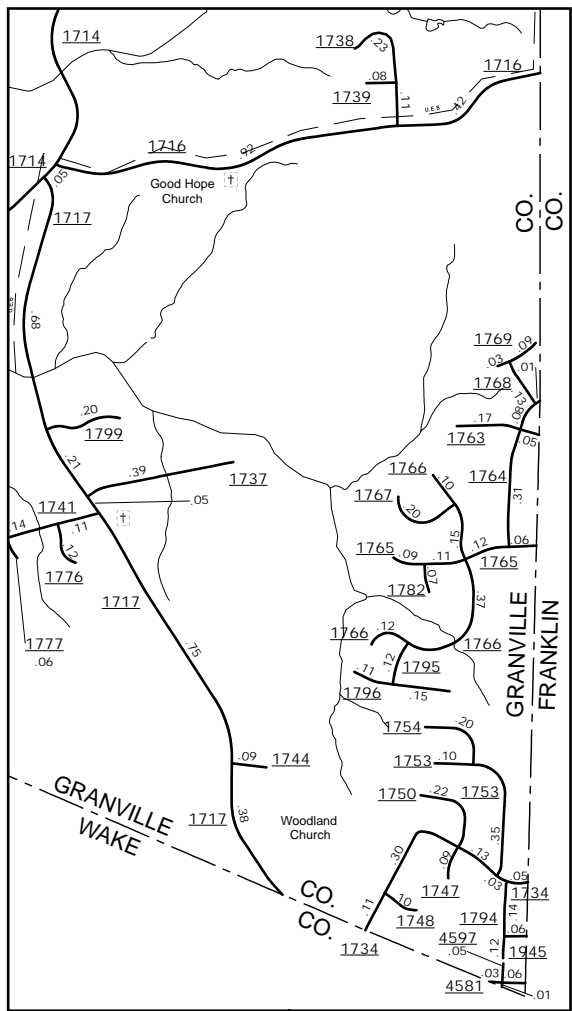
Virginia



Stem



Oxford



SE Corner

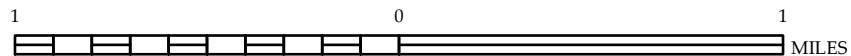
Butner & Creedmoor



ENLARGED MUNICIPAL AND SUBURBAN AREAS
GRANVILLE COUNTY
NORTH CAROLINA

PREPARED BY THE
NORTH CAROLINA DEPARTMENT OF TRANSPORTATION
MANAGEMENT SYSTEMS AND ASSESSMENTS UNIT - MAPPING SECTION
IN COOPERATION WITH THE
U.S. DEPARTMENT OF TRANSPORTATION
FEDERAL HIGHWAY ADMINISTRATION

SCALE



10,000 FOOT GRID BASED ON NORTH CAROLINA PLANE COORDINATE SYSTEM
LAMBERT CONFORMAL CONIC PROJECTION