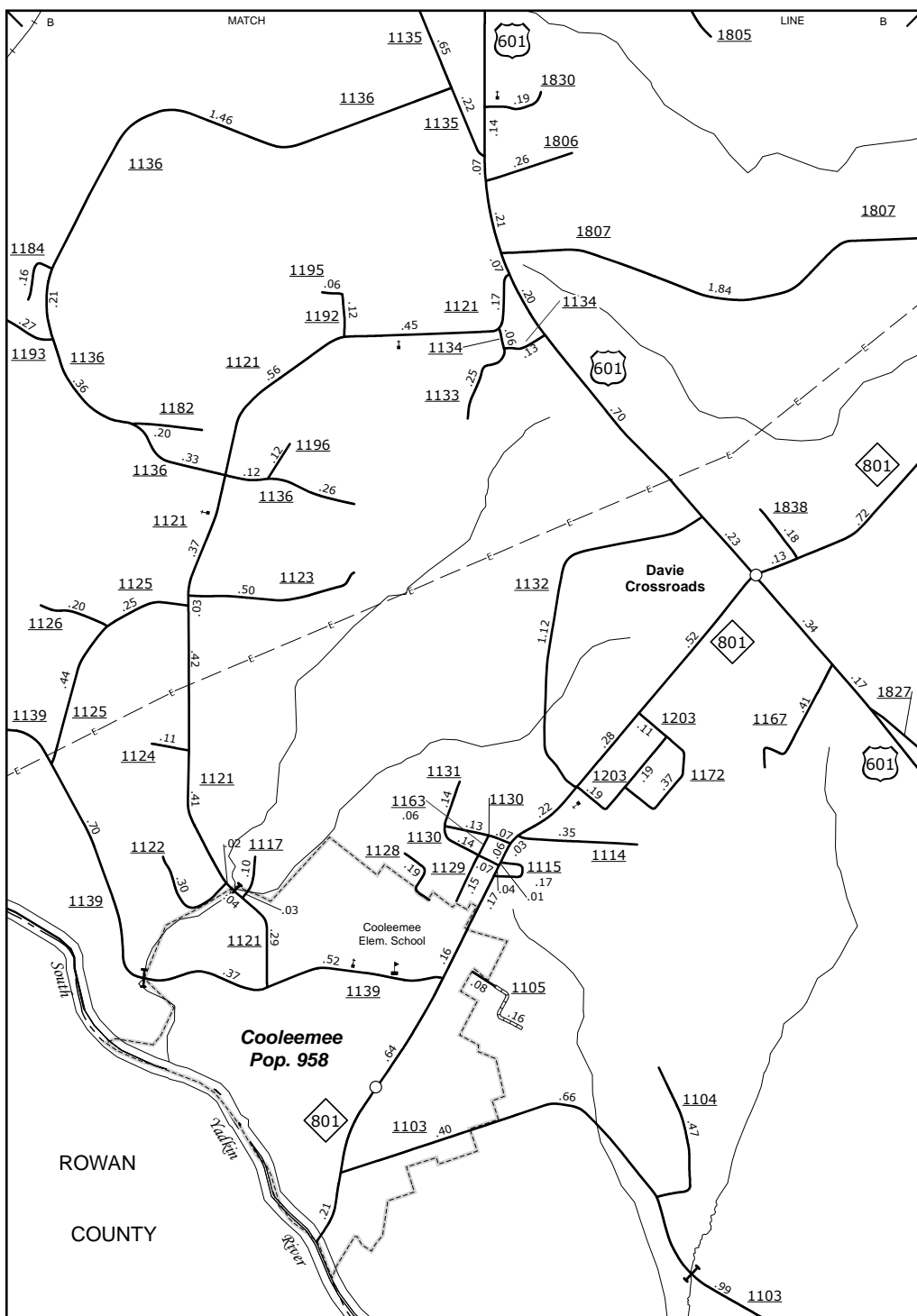
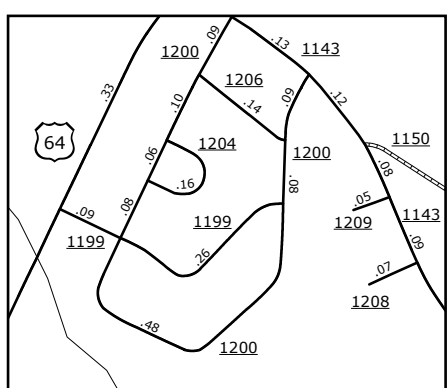


COPIES OF THIS MAP ARE AVAILABLE
FOR PURCHASE AT A PUBLIC UTILITY COST.
ADDRESS: N.C. DEPARTMENT OF TRANSPORTATION
MSAU - MAPPING SECTION
4809 BERTHOUD
Raleigh, NC 27609

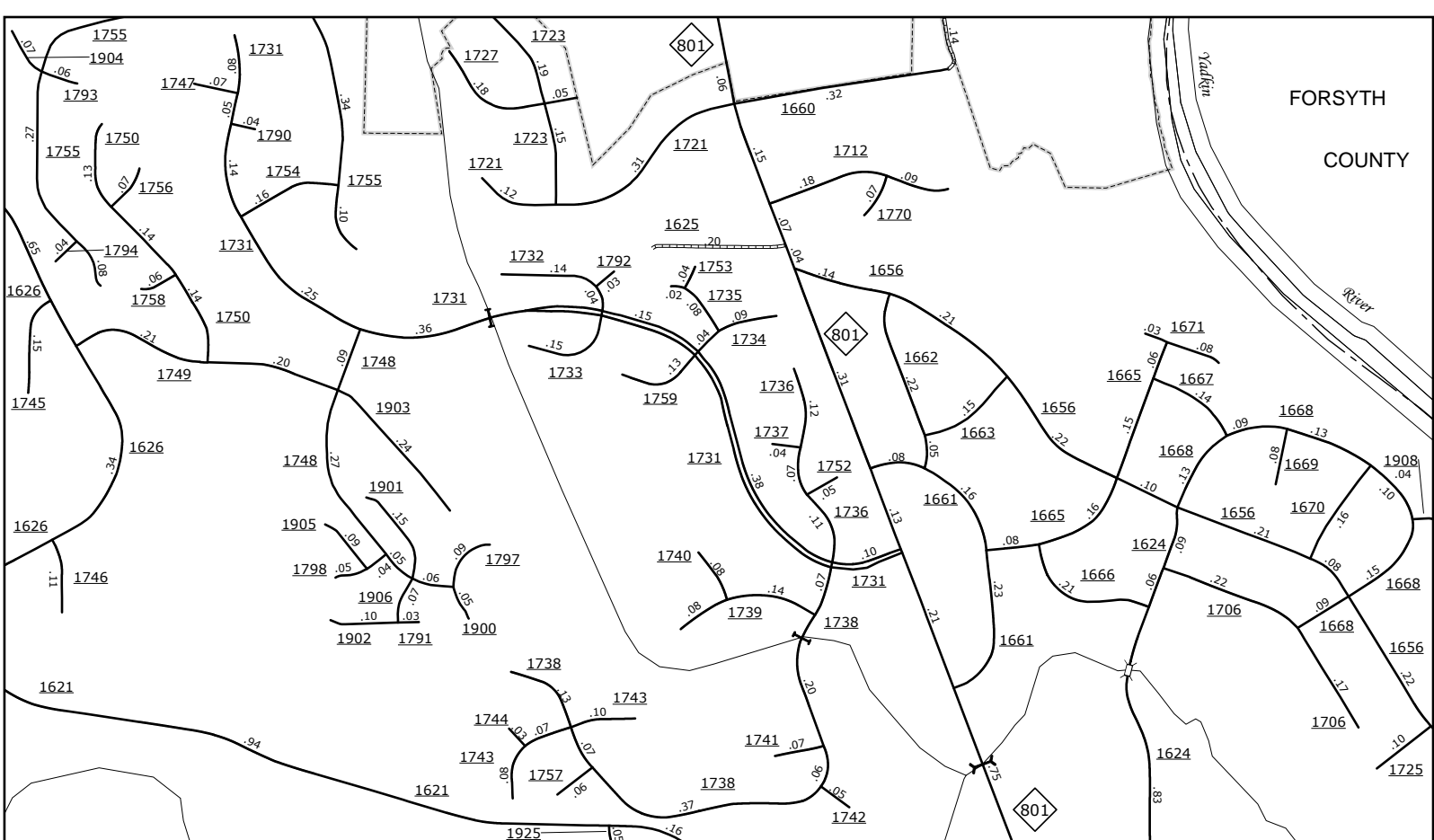
NOTE: Map includes only state-maintained roads
and important non-system roads. Map also includes
local roads shown by local government agencies,
and are shown in their approximate
location. Information on this map is current up to December, 2014.



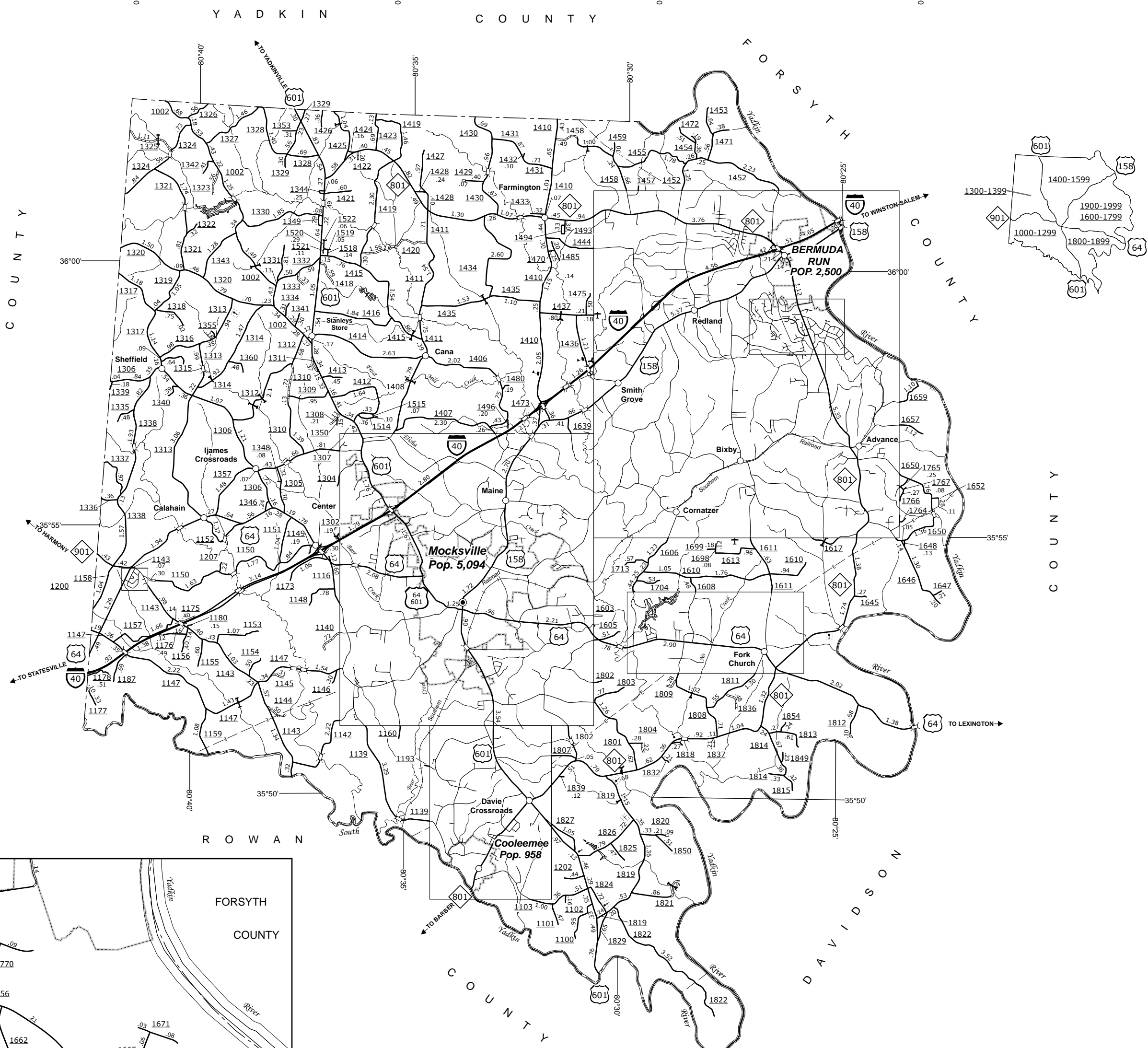
Cooleemee



Oakland Heights

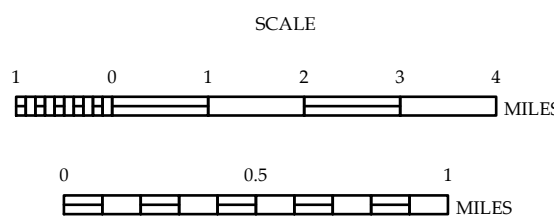


Inset 1



DAVIE COUNTY NORTH CAROLINA

PREPARED BY THE
NORTH CAROLINA DEPARTMENT OF TRANSPORTATION
MANAGEMENT SYSTEMS AND ASSESSMENTS UNIT - MAPPING SECTION
IN COOPERATION WITH THE
U.S. DEPARTMENT OF TRANSPORTATION
FEDERAL HIGHWAY ADMINISTRATION



SCALE FOR ENLARGEMENTS
10,000 FOOT GRID BASED ON NORTH CAROLINA PLANE COORDINATE SYSTEM
LAMBERT CONFORMAL CONIC PROJECTION