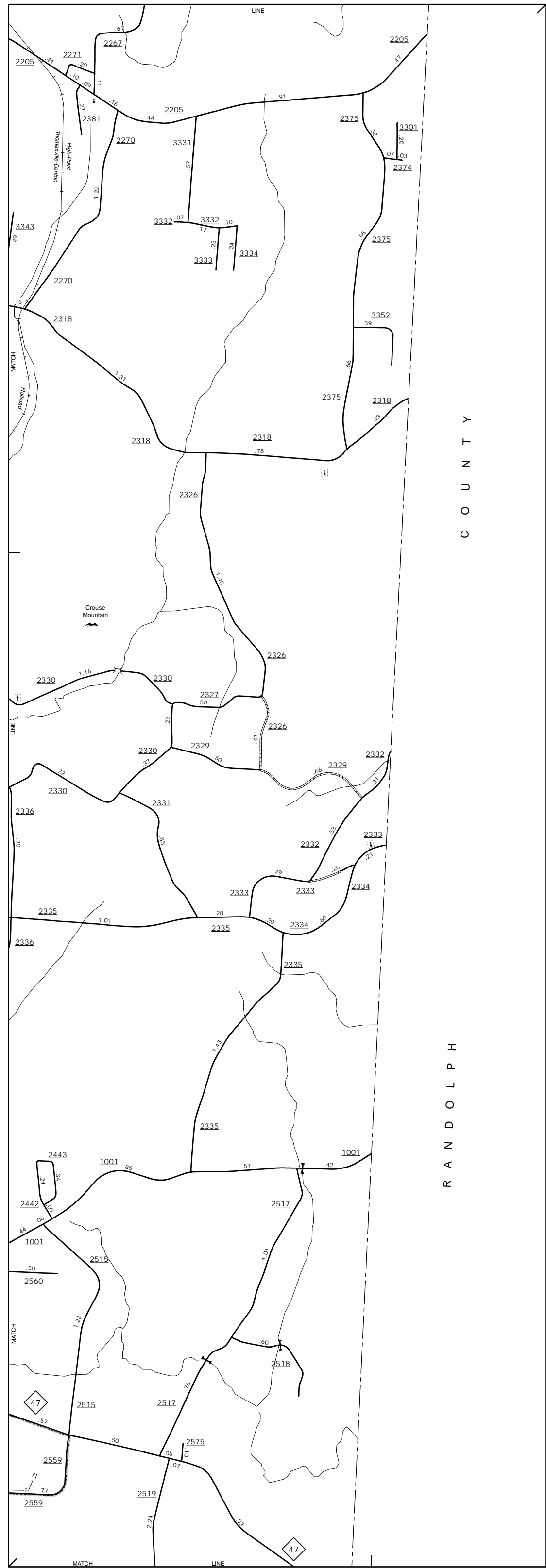
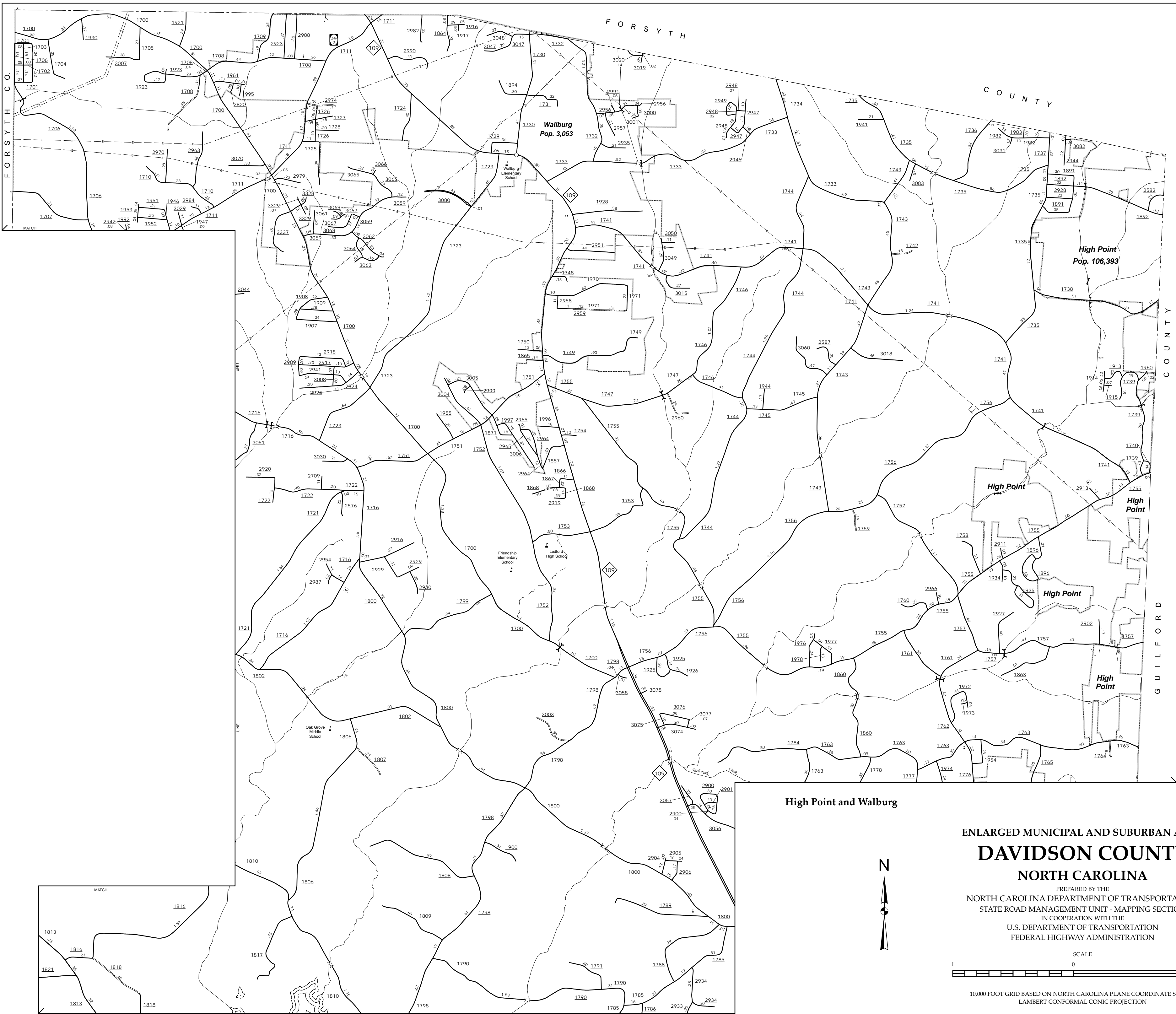


NOTE: Map includes only state-maintained roads and important non-system roads. Map also includes federal, state, and local jurisdictional boundaries. Information on this map is current up to December, 2014.

COPIES OF THIS MAP ARE AVAILABLE
AT THE
N.C. DEPARTMENT OF TRANSPORTATION
STATE ROAD MANAGEMENT UNIT - MAPPING SECTION
4809 BERNY LANE
DAVIDSON, NC 28038



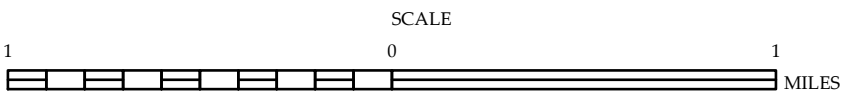
Crouse Mountain



High Point and Walburg

ENLARGED MUNICIPAL AND SUBURBAN AREAS DAVIDSON COUNTY NORTH CAROLINA

PREPARED BY THE
NORTH CAROLINA DEPARTMENT OF TRANSPORTATION
STATE ROAD MANAGEMENT UNIT - MAPPING SECTION
IN COOPERATION WITH THE
U.S. DEPARTMENT OF TRANSPORTATION
FEDERAL HIGHWAY ADMINISTRATION



10,000 FOOT GRID BASED ON NORTH CAROLINA PLANE COORDINATE SYSTEM
LAMBERT CONFORMAL CONIC PROJECTION