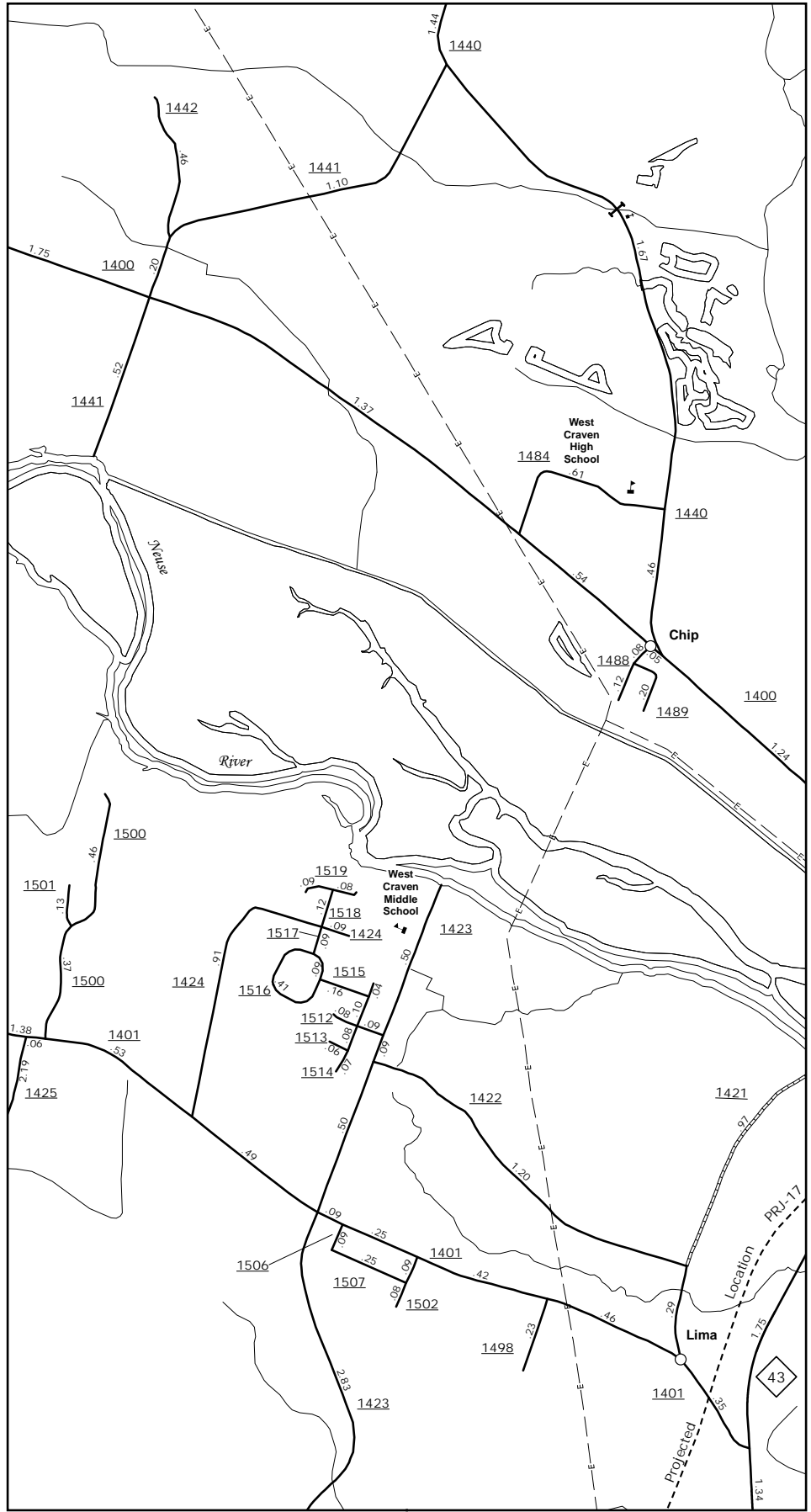
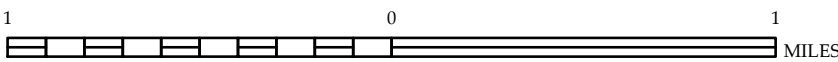


The MS&U's goal is to provide the most accurate and current information possible. Map data is compiled from numerous sources with varying degrees of accuracy and is not guaranteed. As a result, roads and important non-system roads may not be shown or may be shown incorrectly. For additional information, visit <http://www.ncdot.gov/infrastructure/mapping> and click on Data Providers or contact us at (919) 835-8489.

COPIES OF THIS MAP ARE AVAILABLE
FOR PURCHASE AT A PUBLIC NOMINAL COST
ADDRESS:
N.C. DEPARTMENT OF TRANSPORTATION
MS&U - MAPPING SECTION
4809 BERRY LANE
RALEIGH, NC 27609



Chip and Lima



New Bern 8x Inset

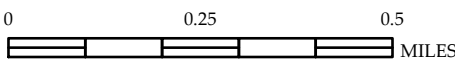


ENLARGED MUNICIPAL AND SUBURBAN AREAS

CRAVEN COUNTY NORTH CAROLINA

PREPARED BY THE
NORTH CAROLINA DEPARTMENT OF TRANSPORTATION
MANAGEMENT SYSTEMS AND ASSESSMENTS UNIT - MAPPING SECTION
IN COOPERATION WITH THE
U.S. DEPARTMENT OF TRANSPORTATION
FEDERAL HIGHWAY ADMINISTRATION

SCALE



10,000 FOOT GRID BASED ON NORTH CAROLINA PLANE COORDINATE SYSTEM
LAMBERT CONFORMAL CONIC PROJECTION