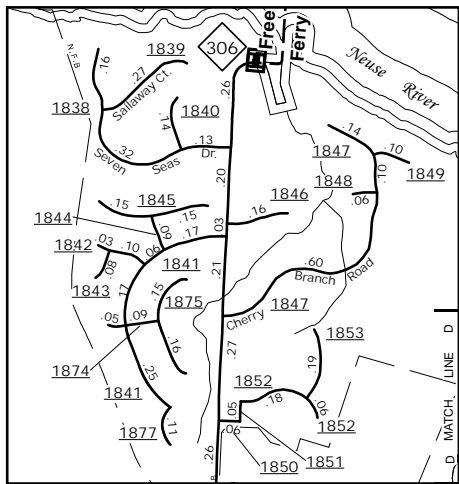
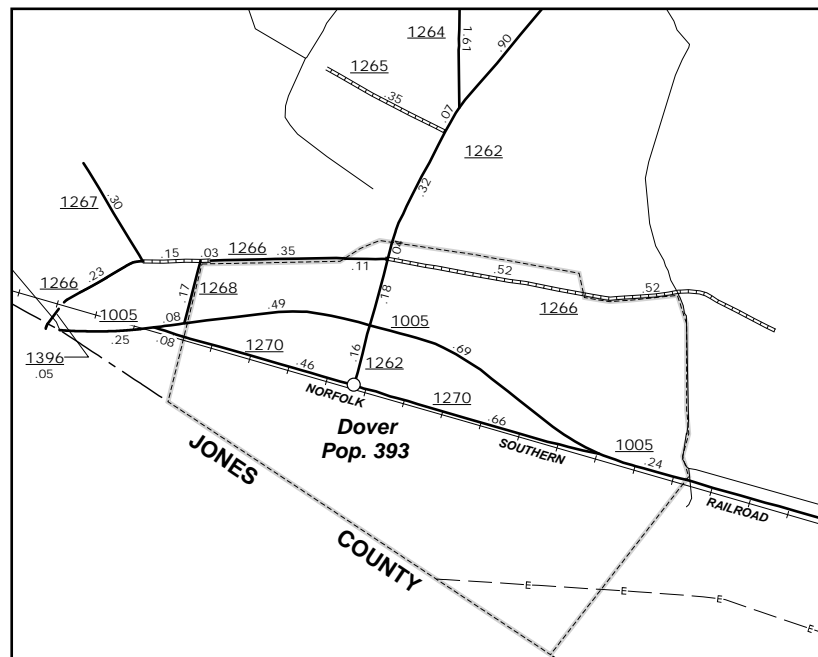
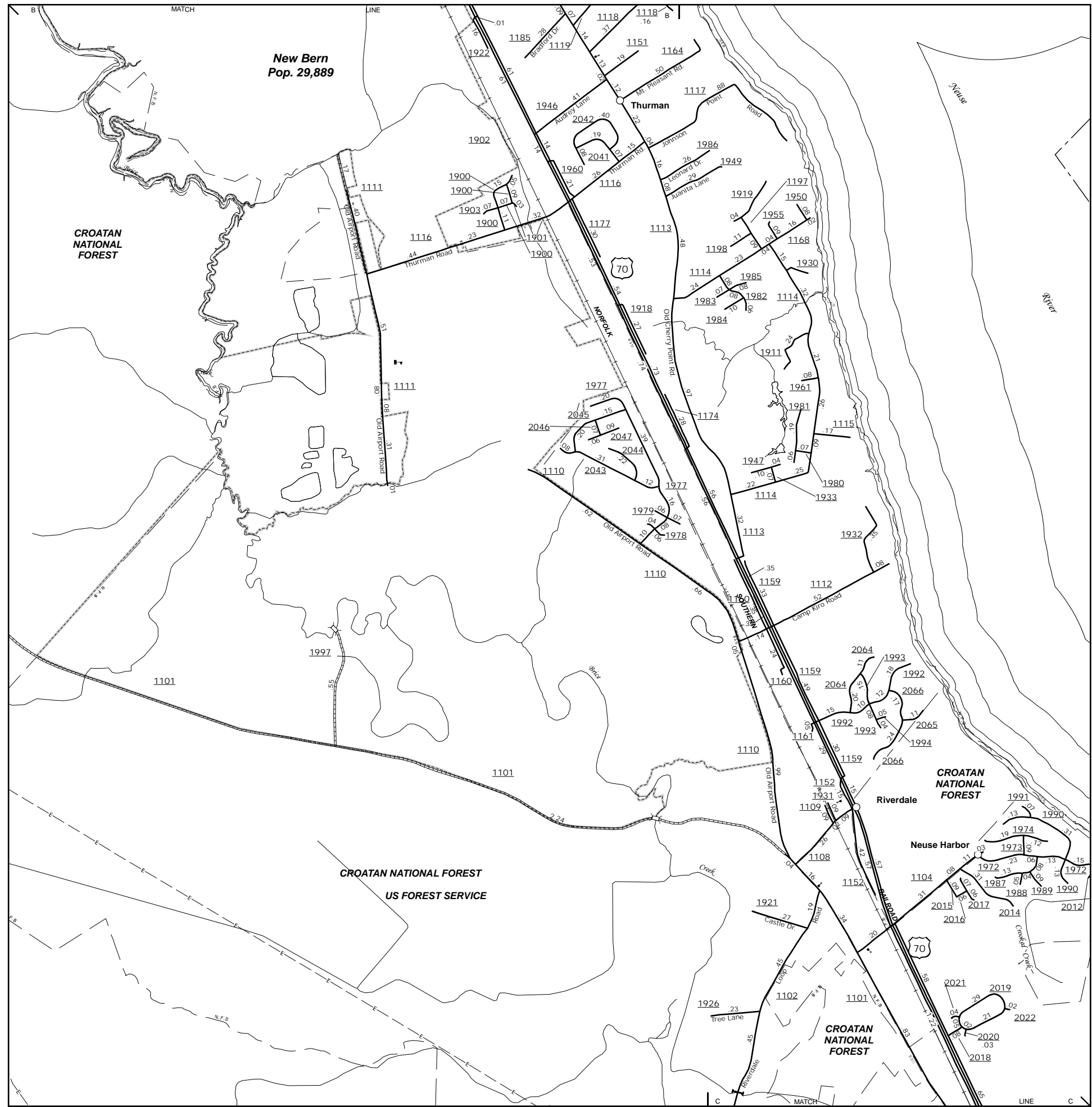
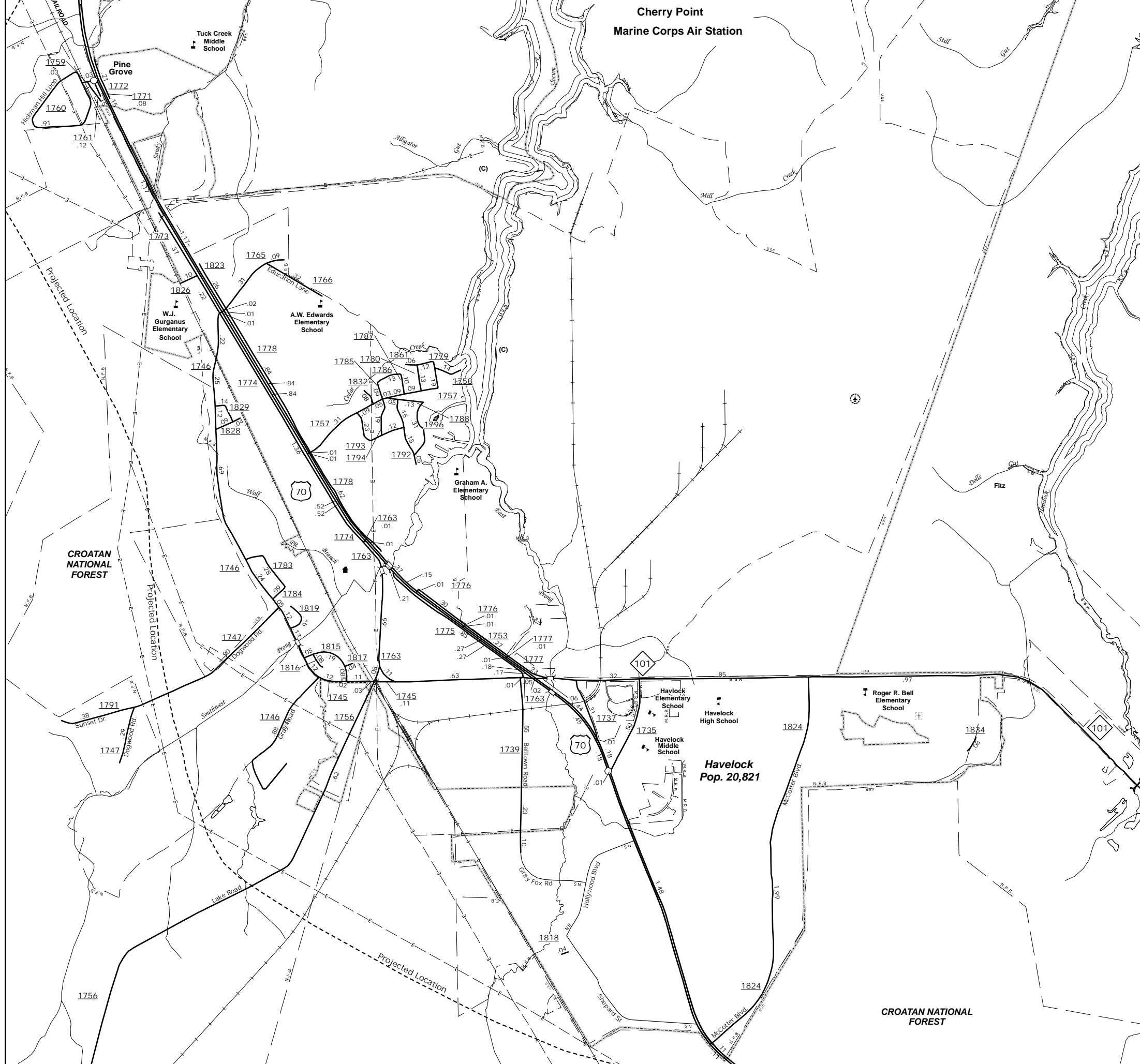
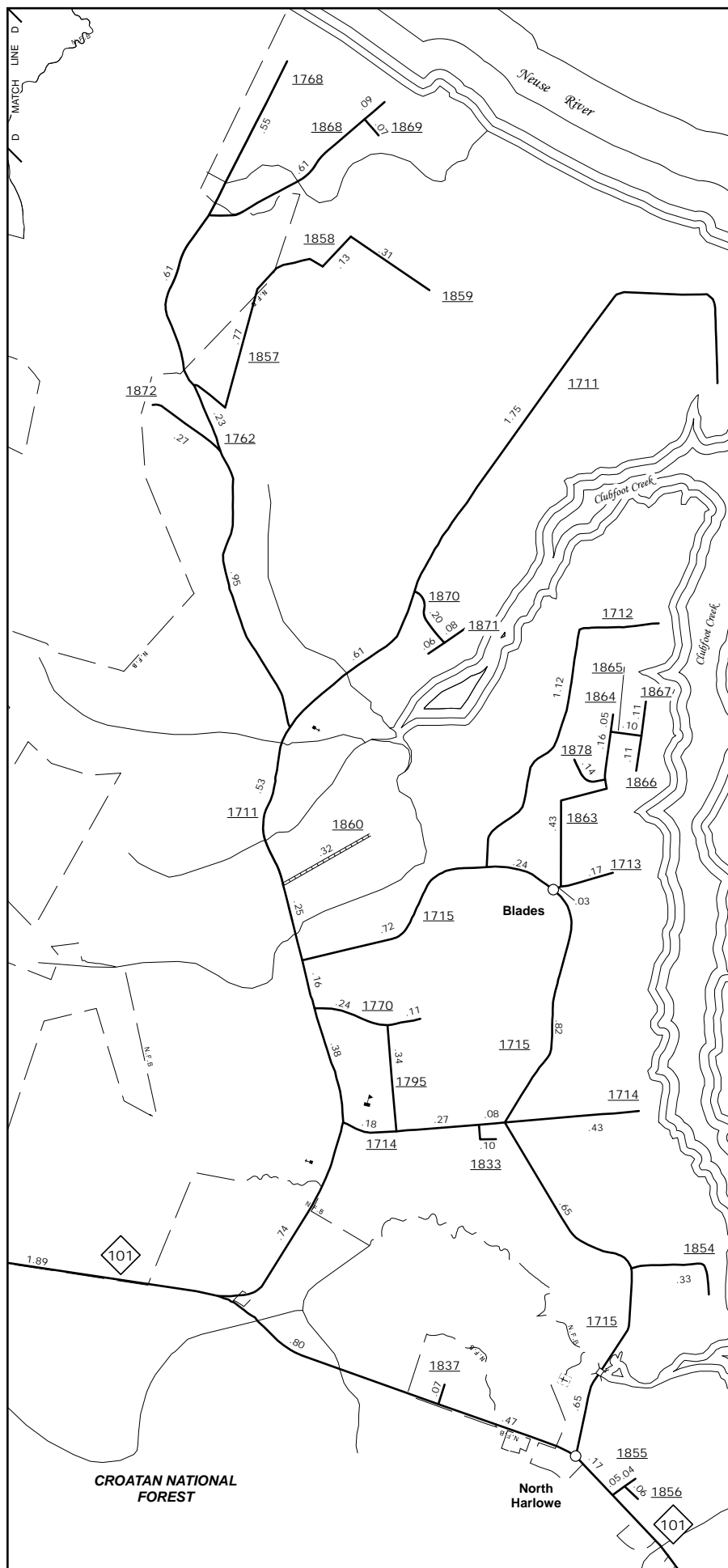


The MS&U's goal is to provide the most accurate and current information possible. Map data is compiled from numerous sources with varying degrees of periodicity and accuracy. As a result, roads and other features may not always be shown in the most current or accurate manner. The MS&U's goal is to provide the most accurate and current information possible. Map data is compiled from numerous sources with varying degrees of periodicity and accuracy. As a result, roads and other features may not always be shown in the most current or accurate manner. The MS&U's goal is to provide the most accurate and current information possible. Map data is compiled from numerous sources with varying degrees of periodicity and accuracy. As a result, roads and other features may not always be shown in the most current or accurate manner.

COPIES OF THIS MAP ARE AVAILABLE  
FROM THE PUBLIC AT NOMINAL COST  
ADDRESS:  
N.C. DEPARTMENT OF TRANSPORTATION  
MS&U - MAPPING SECTION  
4809 BERT RD.  
RALEIGH, NC 27609

### Blades and North Harlowe



### Thurman, James City

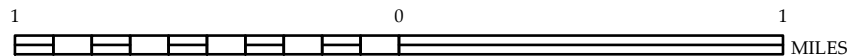
### Craven Free Ferry

### ENLARGED MUNICIPAL AND SUBURBAN AREAS

## CRAVEN COUNTY NORTH CAROLINA

PREPARED BY THE  
NORTH CAROLINA DEPARTMENT OF TRANSPORTATION  
MANAGEMENT SYSTEMS AND ASSESSMENTS UNIT - MAPPING SECTION  
IN COOPERATION WITH THE  
U.S. DEPARTMENT OF TRANSPORTATION  
FEDERAL HIGHWAY ADMINISTRATION

SCALE



10,000 FOOT GRID BASED ON NORTH CAROLINA PLANE COORDINATE SYSTEM  
LAMBERT CONFORMAL CONIC PROJECTION

SHEET 3 OF 4