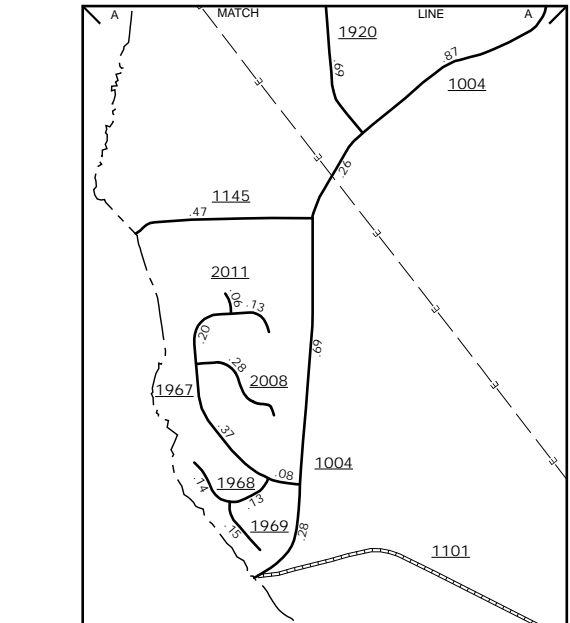
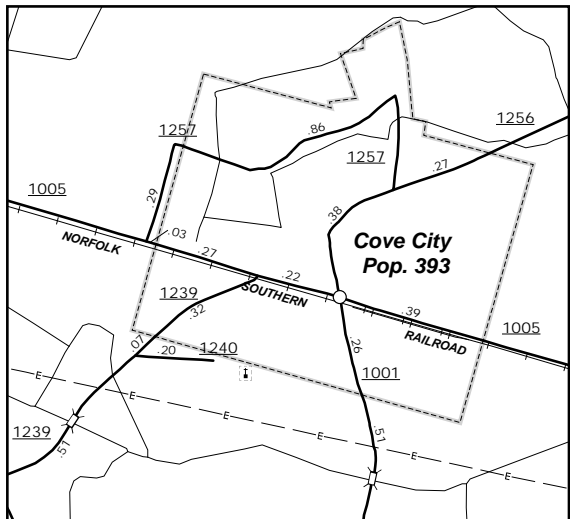
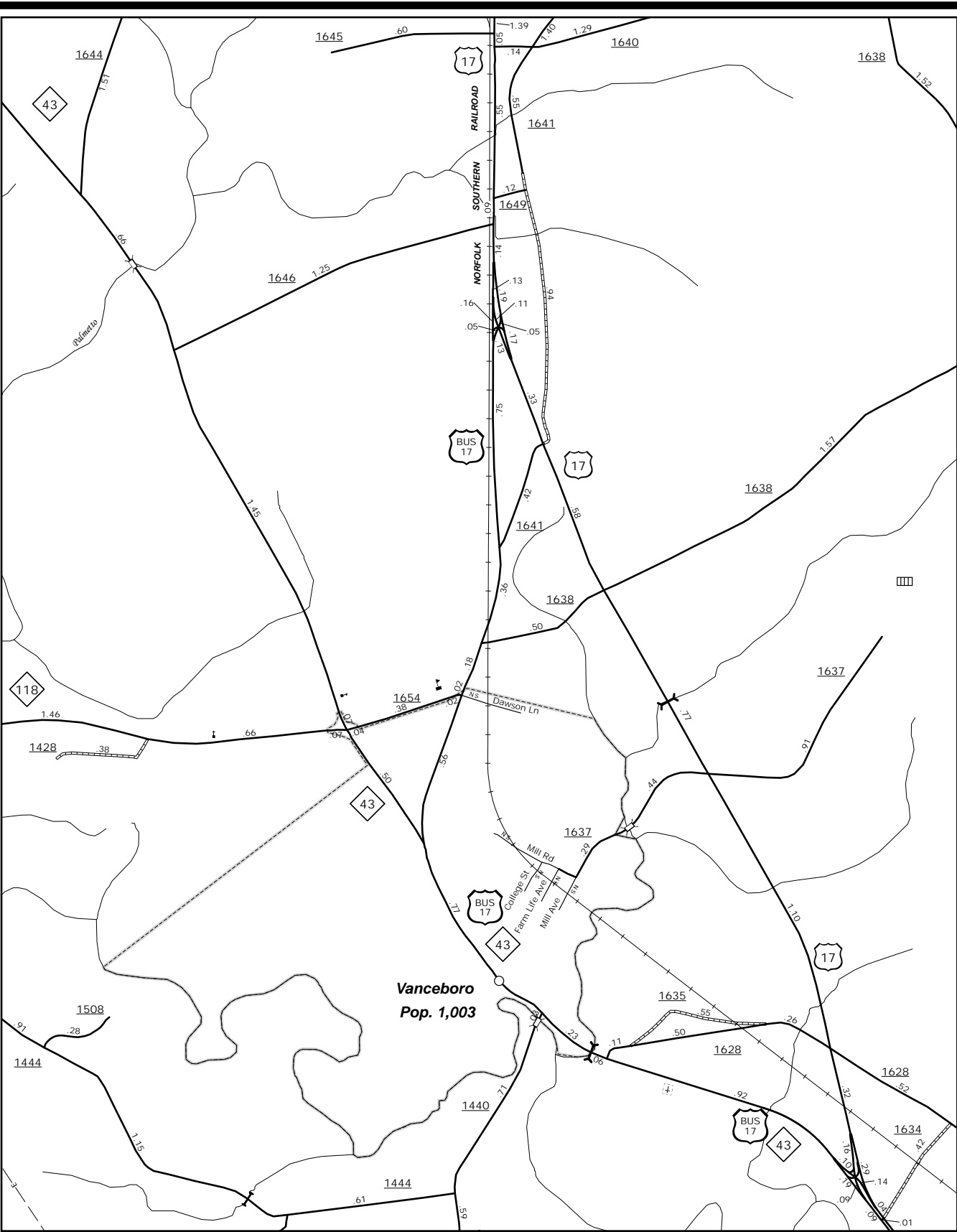


The MS&U's goal is to provide the most accurate and current information possible. Map data is compiled from numerous sources with varying degrees of detail and accuracy. As a result, roads and other features may not be shown in the exact location or at the exact scale as they appear in reality. The MS&U is not responsible for any errors or omissions. For additional information, visit <http://www.ncdot.gov/infrastructure/mapping> and click on Data Providers or contact us at (919) 855-5489.

COPIES OF THIS MAP ARE AVAILABLE  
AT A PUBLIC INFORMATION COST  
ADDRESS: N.C. DEPARTMENT OF TRANSPORTATION  
MS&U - MAPPING SECTION  
4809 BERT RD.  
RALEIGH, NC 27609



Vanceboro

Cove City

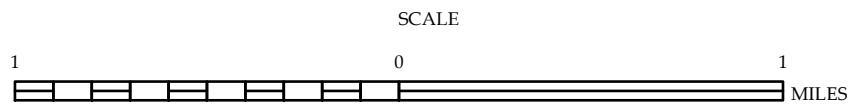
Brice's Creek Road  
New Bern



ENLARGED MUNICIPAL AND SUBURBAN AREAS

# CRAVEN COUNTY NORTH CAROLINA

PREPARED BY THE  
NORTH CAROLINA DEPARTMENT OF TRANSPORTATION  
MANAGEMENT SYSTEMS AND ASSESSMENTS UNIT - MAPPING SECTION  
IN COOPERATION WITH THE  
U.S. DEPARTMENT OF TRANSPORTATION  
FEDERAL HIGHWAY ADMINISTRATION



10,000 FOOT GRID BASED ON NORTH CAROLINA PLANE COORDINATE SYSTEM  
LAMBERT CONFORMAL CONIC PROJECTION

SHEET 2 OF 4