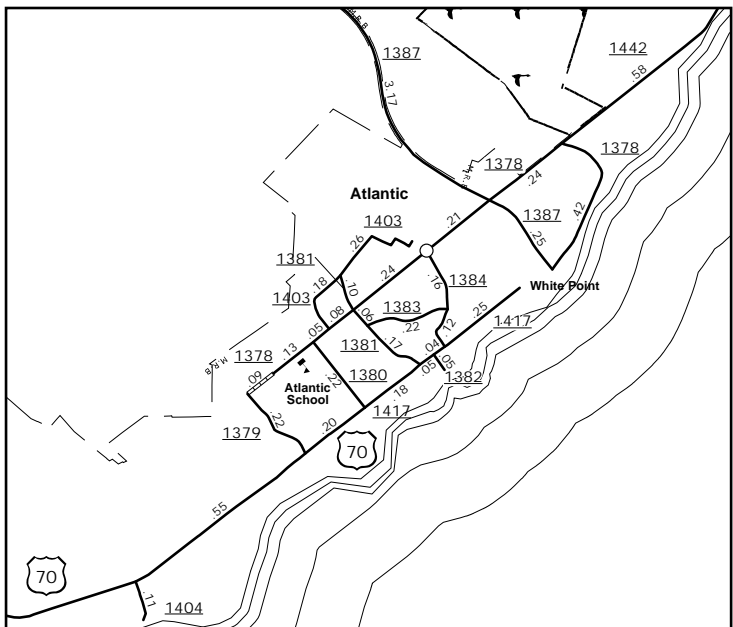
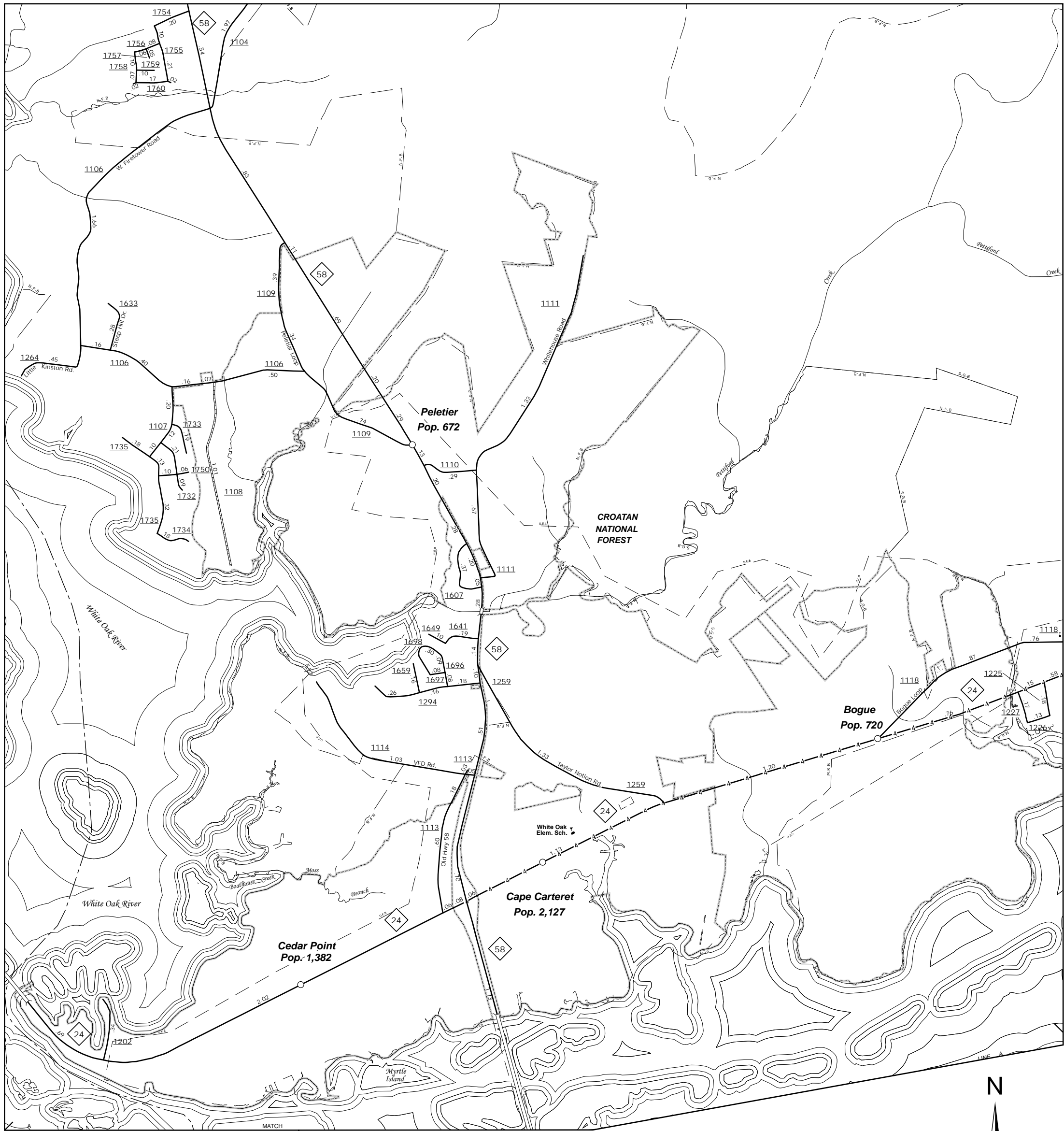
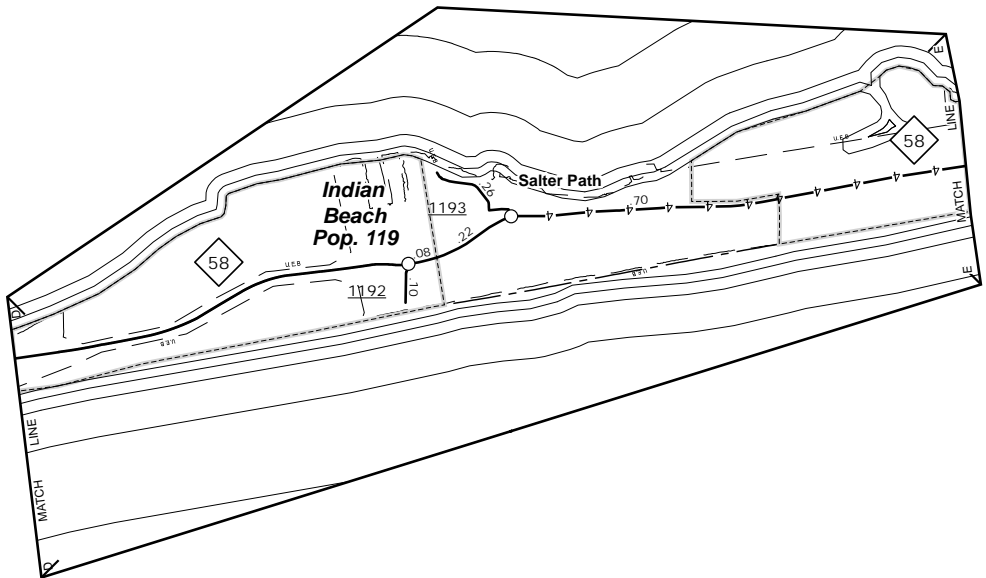


The MS&U's goal is to provide the most accurate and current information possible. Map data is compiled from numerous sources with varying degrees of periodicity and accuracy. As a result, roads and other features may not always be shown in the most current or accurate manner. For additional information, visit <http://www.ncdot.gov/infrastructure/mapping> and click on Data Providers or contact us at (919) 835-8480.

COPIES OF THIS MAP ARE AVAILABLE
FROM THE N.C. DEPARTMENT OF TRANSPORTATION
ADDRESS: N.C. DEPARTMENT OF TRANSPORTATION
MS&U - MAPPING SECTION
4809 BERN LEO
CARRIEDWAY, NC 27505

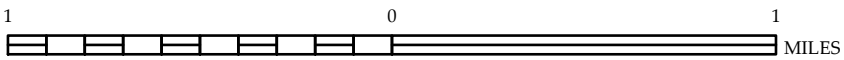


ENLARGED MUNICIPAL AND SUBURBAN AREAS

CARTERET COUNTY NORTH CAROLINA

PREPARED BY THE
NORTH CAROLINA DEPARTMENT OF TRANSPORTATION
MANAGEMENT SYSTEMS AND ASSESSMENTS UNIT - MAPPING SECTION
IN COOPERATION WITH THE
U.S. DEPARTMENT OF TRANSPORTATION
FEDERAL HIGHWAY ADMINISTRATION

SCALE



10,000 FOOT GRID BASED ON NORTH CAROLINA PLANE COORDINATE SYSTEM
LAMBERT CONFORMAL CONIC PROJECTION

SHEET 3 OF 4