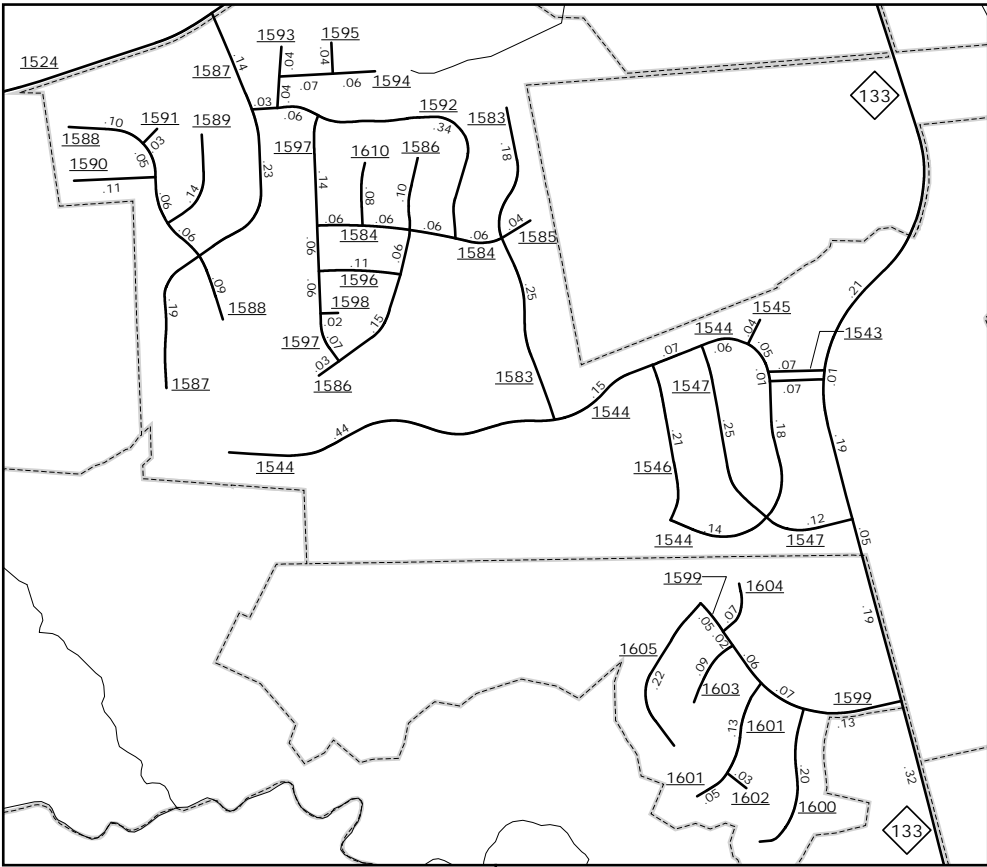


The MS&T's goal is to provide the most accurate and current information possible. Map data is compiled from numerous sources including aerial photography, ground surveys, and other data. As a result, there may be minor discrepancies between the map and actual conditions. The map is not intended to be used for legal purposes and is not a substitute for a survey. For additional information, visit <http://www.ncdot.gov/transportation/mapping> and click on Data Providers or contact us at (919) 835-8480.

COPIES OF THIS MAP ARE AVAILABLE
FOR PURCHASE AT A PUBLIC AT NOMINAL COST.
ADDRESS: N.C. DEPARTMENT OF TRANSPORTATION
MS&T - MAPPING SECTION
4809 BERT RD.
Raleigh, NC 27609



Belville Inset
0 0.25 0.5
MILES



ENLARGED MUNICIPAL AND SUBURBAN AREAS
BRUNSWICK COUNTY
NORTH CAROLINA

PREPARED BY THE
NORTH CAROLINA DEPARTMENT OF TRANSPORTATION
MANAGEMENT SYSTEMS AND ASSESSMENT UNIT - MAPPING SECTION
IN COOPERATION WITH THE
U.S. DEPARTMENT OF TRANSPORTATION
FEDERAL HIGHWAY ADMINISTRATION

SCALE
1 0 1
MILES

10,000 FOOT GRID BASED ON NORTH CAROLINA PLANE COORDINATE SYSTEM
LAMBERT CONFORMAL CONIC PROJECTION