

The MS&U's goal is to provide the most accurate and current information possible. Map data is compiled from numerous sources, varying in the timeliness of the data and the accuracy of the data. As a result, roads and other features may not be shown in the map. Map includes state and federal highways, major roads, and important non-system roads. The map was last updated on June 2014. For additional information, visit <http://www.ncdot.gov/transportation/MS&U> and click on Data Providers or contact us at (819) 835-9480.

COPIES OF THIS MAP ARE AVAILABLE
FOR PURCHASE AT A PUBLIC COST
ADDRESS:
N.C. DEPARTMENT OF TRANSPORTATION
MS&U - MAPPING SECTION
4809 BERN LEO
COLUMBIA, NC 28038



Lucama

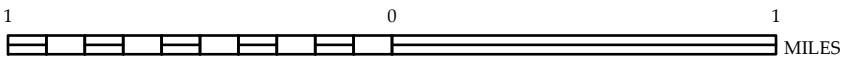


ENLARGED MUNICIPAL AND SUBURBAN AREAS

WILSON COUNTY NORTH CAROLINA

PREPARED BY THE
NORTH CAROLINA DEPARTMENT OF TRANSPORTATION
MANAGEMENT SYSTEMS AND ASSESSMENTS UNIT - MAPPING SECTION
IN COOPERATION WITH THE
U.S. DEPARTMENT OF TRANSPORTATION
FEDERAL HIGHWAY ADMINISTRATION

SCALE



10,000 FOOT GRID BASED ON NORTH CAROLINA PLANE COORDINATE SYSTEM
LAMBERT CONFORMAL CONIC PROJECTION

SHEET 5 OF 5