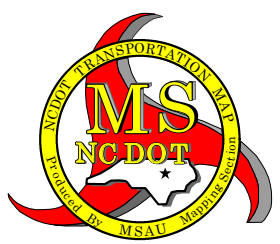
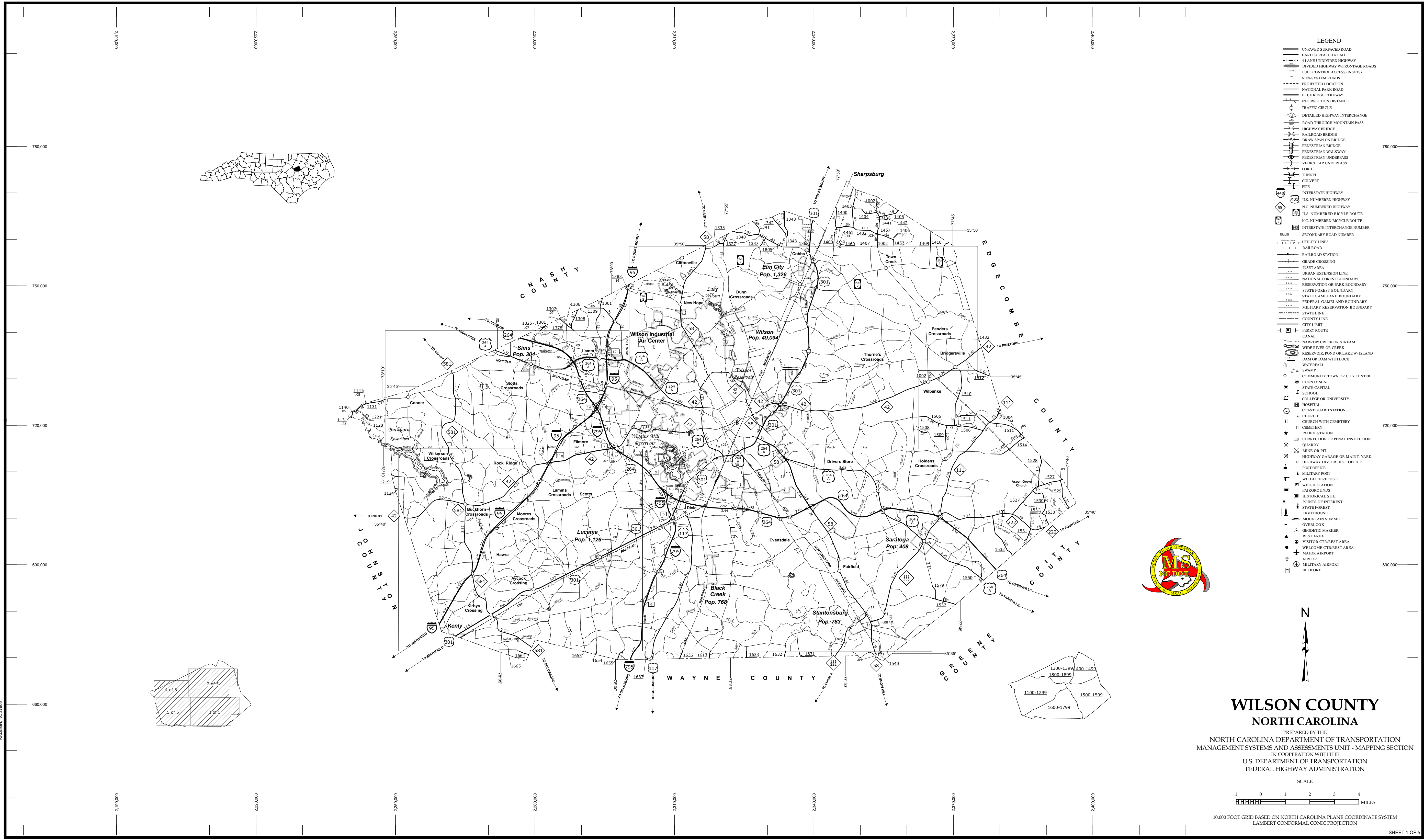


The MS&U's goal is to provide the most accurate and current information possible. Map data is compiled from numerous sources and is subject to change. As a result, the map may not reflect the most current information. The MS&U's goal is to provide the most accurate and current information possible. Map data is compiled from numerous sources and is subject to change. As a result, the map may not reflect the most current information. The MS&U's goal is to provide the most accurate and current information possible. Map data is compiled from numerous sources and is subject to change. As a result, the map may not reflect the most current information.

COPIES OF THIS MAP ARE AVAILABLE  
FROM THE N.C. DEPARTMENT OF TRANSPORTATION  
ADDRESS:  
MS&U - MAPPING SECTION  
4800 BERT RD.  
Raleigh, NC 27609



**WILSON COUNTY**  
**NORTH CAROLINA**  
PREPARED BY THE  
NORTH CAROLINA DEPARTMENT OF TRANSPORTATION  
MANAGEMENT SYSTEMS AND ASSESSMENTS UNIT - MAPPING SECTION  
IN COOPERATION WITH THE  
U.S. DEPARTMENT OF TRANSPORTATION  
FEDERAL HIGHWAY ADMINISTRATION

SCALE  
1 0 1 2 3 4  
MILES  
10,000 FOOT GRID BASED ON NORTH CAROLINA PLANE COORDINATE SYSTEM  
LAMBERT CONFORMAL CONIC PROJECTION