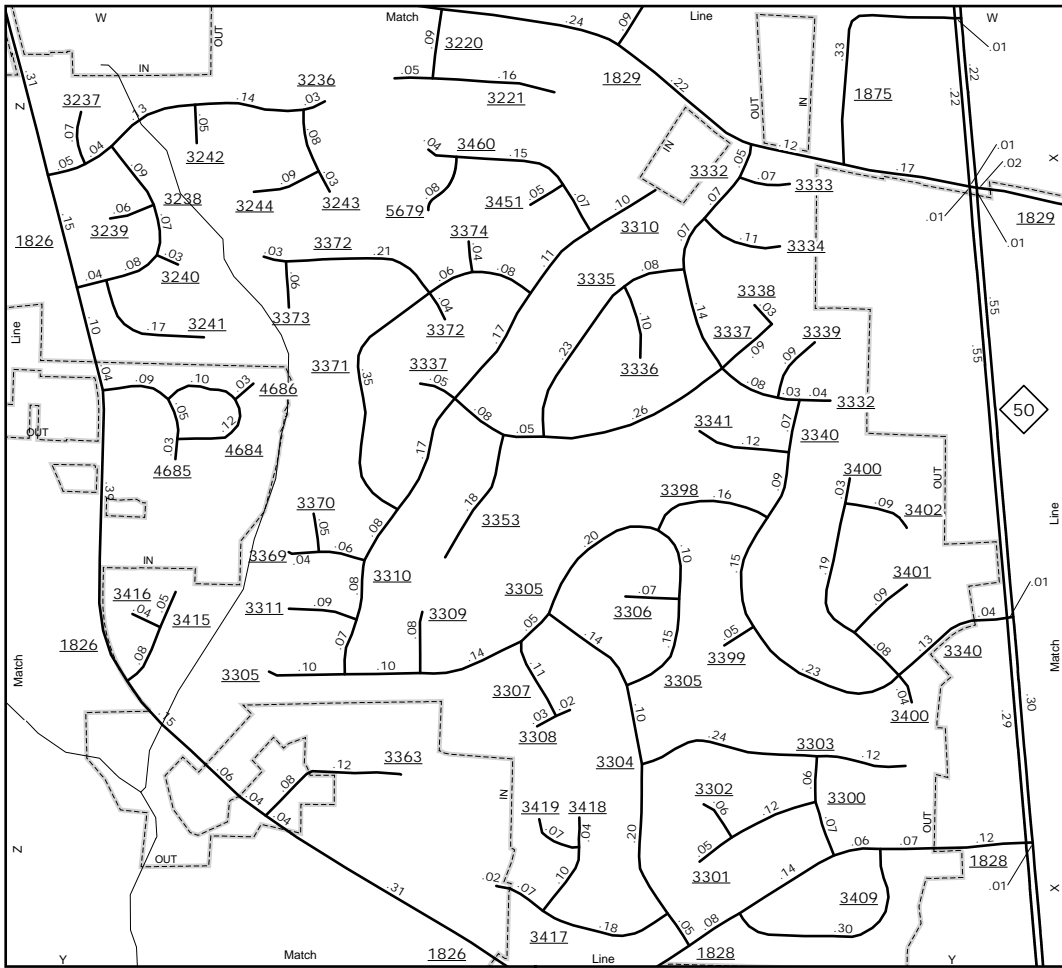
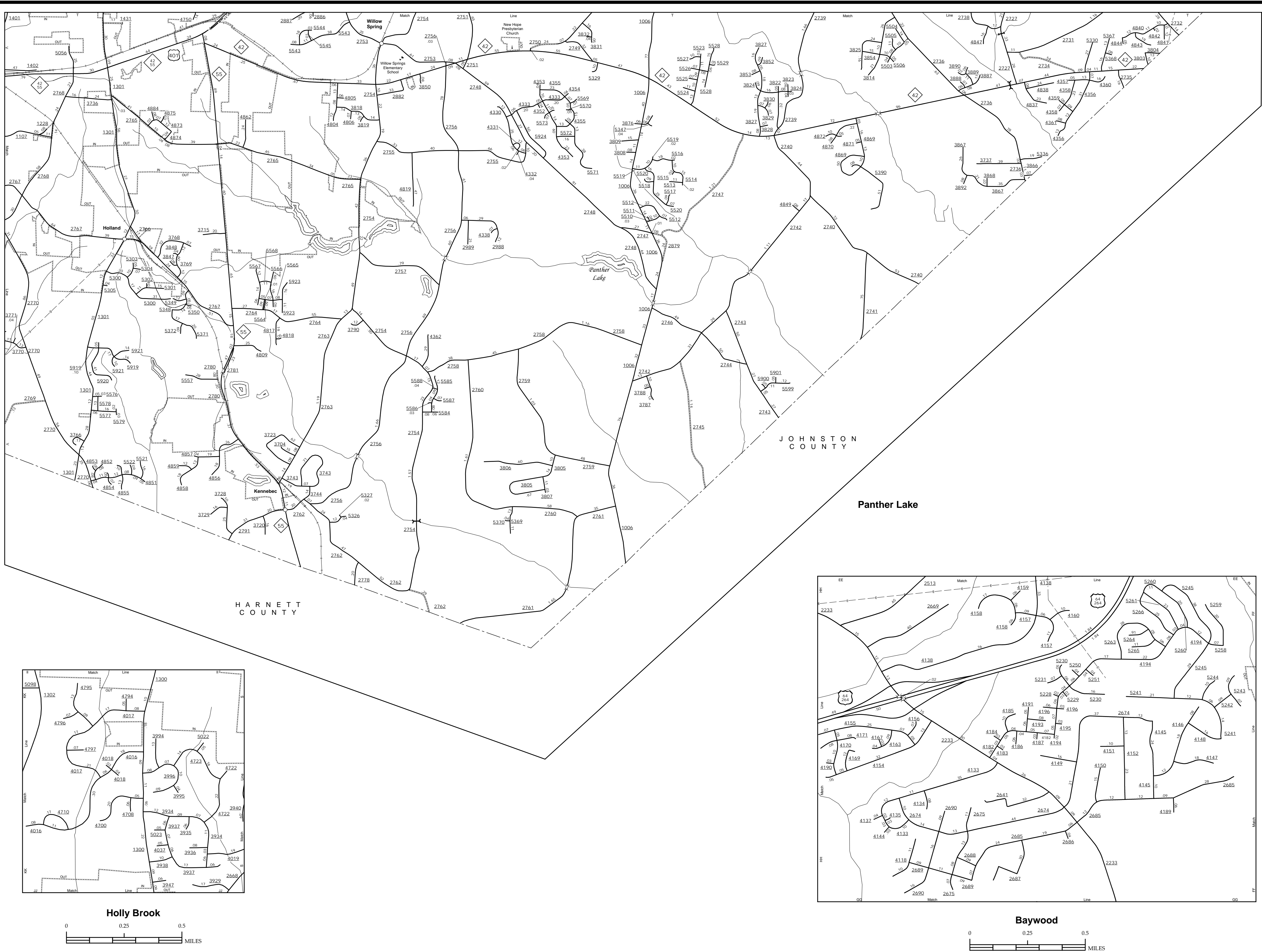
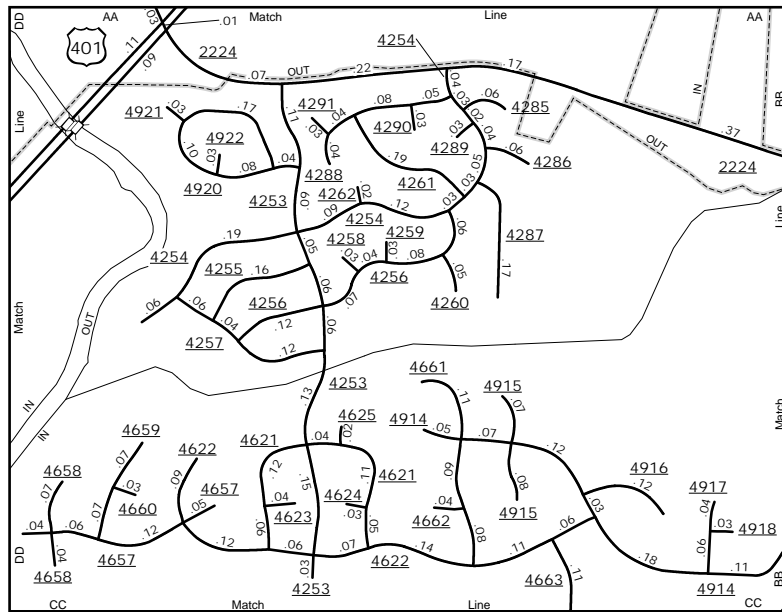
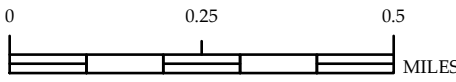


The MS&U's goal is to provide the most accurate and current information possible. Map data is compiled from numerous sources, varying in accuracy and timeliness. Map data is not guaranteed to be 100% accurate. As a result, roads and other features may not be shown in the correct location or may not be shown at all. Map data is not intended to be used for navigation or other purposes. For more information, visit <http://www.ncdot.gov/TravelInformation> and click on Data Providers or contact us at (819) 835-9486.

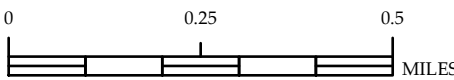
COPIES OF THIS MAP ARE AVAILABLE  
AT THE PUBLIC INFORMATION COST  
ADDRESS:  
N.C. DEPARTMENT OF TRANSPORTATION  
MS&U-MAPPING SECTION  
4809 BERN LEO  
CARRBORO, NC 27510



Stonehenge



Mitchell Mill

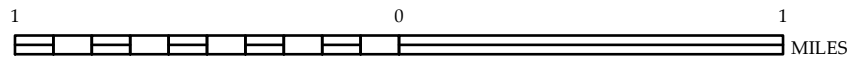


ENLARGED MUNICIPAL AND SUBURBAN AREAS

## WAKE COUNTY NORTH CAROLINA

PREPARED BY THE  
NORTH CAROLINA DEPARTMENT OF TRANSPORTATION  
MANAGEMENT SYSTEMS AND ASSESSMENTS UNIT - MAPPING SECTION  
IN COOPERATION WITH THE  
U.S. DEPARTMENT OF TRANSPORTATION  
FEDERAL HIGHWAY ADMINISTRATION

SCALE



10,000 FOOT GRID BASED ON NORTH CAROLINA PLANE COORDINATE SYSTEM  
LAMBERT CONFORMAL CONIC PROJECTION

SHEET 13 OF 13